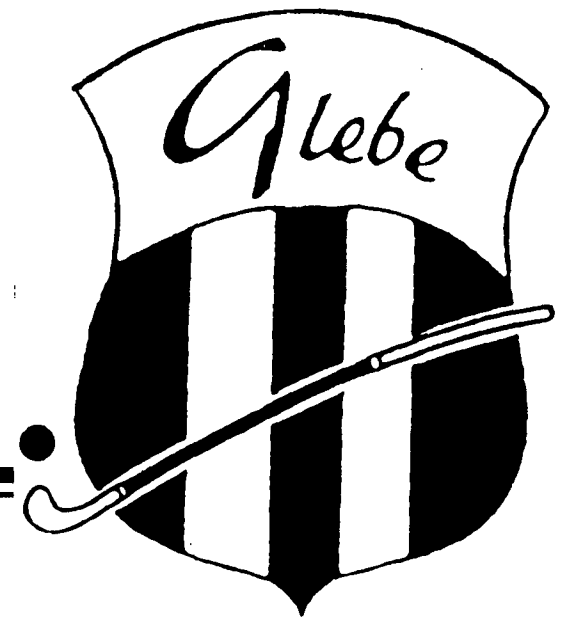


# THE RED RAG NEWSLETTER

Glebe District Hockey Club Inc

SEPTEMBER 1996



## President's Message

Another season is drawing to a close with all senior teams involved in semi-finals. The next few games will tell how good we can put it together when we need to.

We have all been at this position in semi-finals before. Let us all dwell on past experiences for a moment and use the lessons well learnt to lift ourselves to greater achievements.

To the executive the season is fast hotting up and we need all hands on deck to lessen the burden at this time.

Thanks to Kevin, Amrat & Margaret who have tough jobs as Club Captains; and to their respective selectors who have stumped the critics once again by having all teams in the semi's.

To our sponsors without whose generous support and assistance we would not be able to achieve what we have achieved this year, I thank you.

My admiration goes to Ann Wark who took on the responsibility of the canteen, she has done a great job. Thank you Ann, and David and his helpers who made the BBQ sizzle and fed all of us.

To Terry and the Junior Committee, to all Coaches and Managers, to all the junior players who represented the Club exceptionally well.

When all is said and done - if you know in your heart you have done the best you could; if you have applied yourself at training, practised diligently and played as a team player you can't be disappointed.

If you have improved, that's the key to build on from year to year.

Be patient and don't give up on yourself.

*Geoff Paterson  
President*

## Dear Member

Welcome to the last edition of the Red Rag for 1996.

Before I go any further I would like to thank all the people who help make the Red Rag what it is (a news letter about the Club) - I was only joking! I would like to thank Eddy Crook for all the work he does in compiling all the articles and giving it a touch of class. To the people who contribute to the Rag - Geoff, Terry, Robin, Adam, GBDC, my informants and to those who have written in thank you. We have all combined to make the Red Rag a very informative and readable news letter.

To all our sponsors what can I say but thank you, for without your support we would not be in the position of strength we are in today.

At the time of writing, the Club has all (7) senior men and (5) women teams into the semi final series. In the junior ranks we got 12 teams out of 13 into the semi finals. What a great effort. That is a tribute to all within the Club (everyone stand up and take a bow).

The Club is to about to go into a new era with the Turf projected to come on line approximately March next year. This will require all of us to pitch in a little bit more both financially and with time. It could possibly change a few things, e.g. the way and times we all train. This will be worked out over the summer months. Who knows nothing might change except the venue.

But I know one thing that will not change: the spirit and camaraderie we have for one another, that is what makes this Club great.

Last of all I would like to thank all of the tireless workers who work behind the scenes, Ann and the girls who work behind the bar, The Turf boys, The Wednesday night BBQ boys, All the managers and coaches of the junior ranks, the Club thanks you.

## Messages of the Month

"More sweat in training - less blood in battle."

*Les Wark  
Secretary*

**remember...**

The finals are coming...

and

18 Oct Senior Presentation

24 Nov AGM

## Inside

Club Calendar	Page 2
Men's News	Page 2
Turf Update	Page 3
Many Thanks	Page 4
Women's News	Page 5
Under 17 One's	Page 6
Junior News	Page 6
Under the Arches	Page 7



# Bishops

REAL ESTATE AGENTS, VALUERS & CONSULTANTS

275 GEORGE STREET  
SYDNEY NSW 2000  
GPO BOX 4150 SYDNEY 2001

Fax (02) 262 6768  
TEL (02) 262 6477

**For all your commercial  
real estate needs**

## Club Calendar

MAJOR DATES TO PUT IN YOUR DIARY  
(NOTE SOME DATES HAVE CHANGED)

### Major dates to put in your diary

12 October	Presentation Night Balmain Leagues Club
27 October	Junior Presentation Day
24 November	AGM

**PLEASE NOTE  
CHANGE OF DATE  
AND VENUE**

### SENIOR PRESENTATION NIGHT

**12 OCTOBER 1996  
Balmain Leagues Club**

This will be a ticket only affair.  
Application form for tickets  
is enclosed with this issue of  
*The Red Rag*

### TAMWORTH OCTOBERFEST 1996

The Tamworth Long Weekend  
Hockey Carnival is on again. All  
interested contact Jason Taylor who is  
trying to get a team together.

### ANNUAL GENERAL MEETING

The Annual General Meeting of the  
Glebe District Hockey Club is on  
Sunday, 24 November, 1996  
at 9.00 a.m.

People wishing to nominate for a  
position must do so in writing,  
signed and seconded by a Club  
member, and be received by the  
Secretary no later than 21 days  
before the meeting date.

#### ALL members should attend

It's your chance to have a say  
in the running of the Club.  
It is your Club.

Put it in your diary NOW

# Elastoplast

THE COMFORTABLE, HARDWORKING PLASTER.  
Smith & Nephew

## Men's News

### The Finals Are Here!

#### PREMIER DIVISION (Please note changes to Premier Division)

7 Sept	lv2 Homebush 1 lv2 Homebush 1 lv2 Homebush 1	3rd Grade 2nd Grade 1st Grade	11.15am 1.00pm 3.00pm	Semi Final Semi-Final Semi-Final
8 Sept	3v4 Ryde 3v4 Ryde 3v4 Ryde	3rd Grade 2nd Grade 1st Grade	11.15am 1.00pm 3.00pm	Semi-Final Semi-Final Semi-Final
14 Sept	Moorebank 1 Moorebank 1 Moorebank 1	3rd Grade 2nd Grade 1st Grade	11.15am 1.00pm 3.00pm	Preliminary Final Preliminary Final Preliminary Final
21 Sept	Moorebank 1 Moorebank 1 Moorebank 1	3rd Grade 2nd Grade 1st Grade	11.15am 1.00pm 3.00pm	Grand Final Grand Final Grand Final

#### SECOND DIVISION

7 Sept	3v4 Sutherland 3v4 Sutherland 3v4 Sutherland	3rd Grade 2nd Grade 1st Grade	11.15am 1.00pm 2.45pm	Semi-Final Semi-Final Semi-Final
8 Sept	1v2 Sutherland 1v2 Sutherland 1v2 Sutherland	3rd Grade 2nd Grade 1st Grade	11.15am 1.00pm 2.45pm	Semi-Final Semi-Final Semi-Final
15 Sept	Sutherland Sutherland Sutherland	3rd Grade 2nd Grade 1st Grade	11.15am 1.00pm 2.45pm	Preliminary Final Preliminary Final Preliminary Final
22 Sept	Sutherland Sutherland Sutherland	3rd Grade 2nd Grade 1st Grade	11.15am 1.00pm 2.45pm	Grand Final Grand Final Grand Final

#### THIRD DIVISION

7 Sept	lv2 Bankstown lv2 Bankstown	2nd Grade 1st Grade	1.00pm 3.00pm	Semi-Final Semi-Final
8 Sept	3v4 Bankstown 3v4 Bankstown	2nd Grade 1st Grade	1.00pm 3.00pm	Semi-Final Semi-Final
15 Sept	Ryde Ryde	2nd Grade 1st Grade	1.00pm 3.00pm	Preliminary Final Preliminary Final
22 Sept	Ryde Ryde	2nd Grade 1st Grade	1.00pm 3.00pm	Grand Final Grand Final

**LOVE A BARGAIN ?  
Check this out,**

**Factory and Clearance  
prices on Fashion, Footwear,  
Electrical and more**



STOCKLAND MAROUBRA

**707 ANZAC PARADE, MAROUBRA JUNCTION**

a reminder...

## SENIOR PRESENTATION NIGHT

FRIDAY 18 OCTOBER 1996

### BALMAIN LEAGUES CLUB

Victoria Road, Rozelle

7.00 pm to Late

COST \$35 PER PERSON

DRINKS AT CLUB PRICES  
MUSIC & DANCING  
DRESS — SMART CASUAL

*Please note*

Only 300 tickets are available!

Ticket Only Affair

No money will be collected at the door

Payment is required before

any tickets are issued

Ticket Sales Close Soon

Please order your tickets from  
Les Wark (9181 2379)  
or Ann Rochester (9680 3647)

## TURF UPDATE

The Club has now received written advice from Leichhardt Council that the \$200,000 has been approved. Now we are on our way.

The Turf Negotiation Committee of Craig Stubbs, Les Wark, & Colin Rochester have selected the synthetic turf that is to be laid at Harold Park. The turf selected is called MEGATURF PPM 8-14, produced by Polytan. The specifications include a 8mm shock pad with the polyester fibres approx. 10 to 14mm long. It is the same surface that will be used at the 1998 Commonwealth Games in Malaysia. This surface will be the first of this model in Australia. Polytan have laid surfaces all over the world and was selected (the model below ours) for the Queensland State Hockey Centre in Brisbane.

Rod Hammett has finalised our proposal and it will be presented to the Department of Sport and Recreation by Bill and Craig Stubbs. This should happen early September.

Final plans and specifications have been presented to Harold Park for their approval.

Once approval, has been received and contractors put in place work is expected to commence approximately October/November; but this could change after a work schedule has been finalised and discussions with Polytan on the best time for them to lay the turf.

The Turf Operations and Marketing Committee (Arthur Moir, Jim Oman, Bill Warner, Merv Goodridge, Carman Byrne, Geoff Bortfield, Gary Cronin and Greg Lawler) will be meeting to start the ball rolling on the operation and marketing of the turf. If you have any ideas, see one of them.

### Member's Advertisements

Why not use  
the RED RAG  
to advertise

The cost is FREE to members.

### FREE PLUG

Repairs, engagement rings,  
or any design, are my forté.

You can catch me at training

or 798 5416

Mischa

The RED RAG is proudly printed by

## MagniPress

Printed Media Communications

For all your printing needs  
4 Annandale Street  
Annandale NSW 2038

Fax 02 564 5311 Tel 02 564 5299

## Many, Many Thanks!

It would be impossible to list everyone who has helped the Club throughout the year. We are able to run only because of the unselfish assistance given by many people and businesses.

As well as our major sponsors, there are those who deserve special mention:

**Galluzzo's Fruit shop**, 187 Glebe Point Road (near St Johns Road) have been generous with their donation of fruit baskets for the Junior Carnival and Barbecue raffles. In addition Damien, his brother Joe and the staff give the Club a generous discount on all our needs for the Carnival, Junior BBQ and the weekly sausage sizzle. Support them when you can. They even offer free home delivery and will carry your heavy load of fruit and veg to your car.

**Godfreys Vacuum Cleaner Specialist**, 105 Parramatta Road, Camperdown, recently repaired the Clubhouse vacuum cleaner free of labour costs - just because we were a "local sporting club". Thank you Godfreys.

Let's support local businesses that support us.

As well as businesses, we could not do without the army of volunteers who give their time and experience to the Club.

**Jim Oman** frequently makes a journey deep into the western suburbs of greater Sydney with a car full of empty aluminium cans. Proceeds of this recycling is money we would otherwise have put into the garbage! Don't forget to put all your empty soft drink and beer cans into the red container just inside the Clubhouse door. The cash goes to a good cause - your hockey club.

For those mentioned by Geoff Paterson and Les Wark and the many other helpers who, as said, are too numerous to list -

*Thank  
You*

a reminder...

## ANNUAL GENERAL MEETING

The Annual General Meeting of the Glebe District Hockey Club is on

**Sunday, 24 November, 1996  
at 9.00 a.m.**

People wishing to nominate for a position must do so in writing, signed and seconded by a Club member, and be received by the Secretary no later than 21 days before the meeting date.

**ALL members should attend**

It's your chance to have a say  
in the running of the Club.  
It is your Club.

**Put it in your diary NOW**



**GB Carlton.**

**One of the world's great brewers.**



*Glebe*

**GLEBE DISTRICT HOCKEY CLUB**

**PRESENTATION  
NIGHT**

**FRIDAY  
18 OCTOBER 1996**

**BALMAIN LEAGUES CLUB**  
Victoria Road, Rozelle

**7.00 pm to Late**

**COST \$35 PER PERSON**

**DRINKS AT CLUB PRICES  
MUSIC & DANCING  
DRESS — SMART CASUAL**

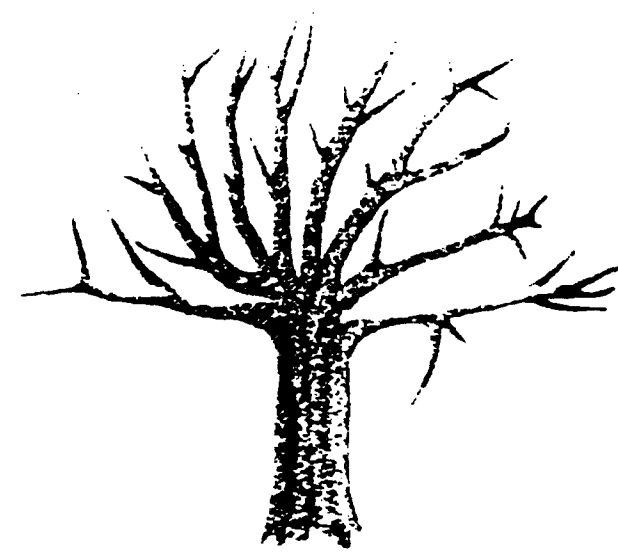
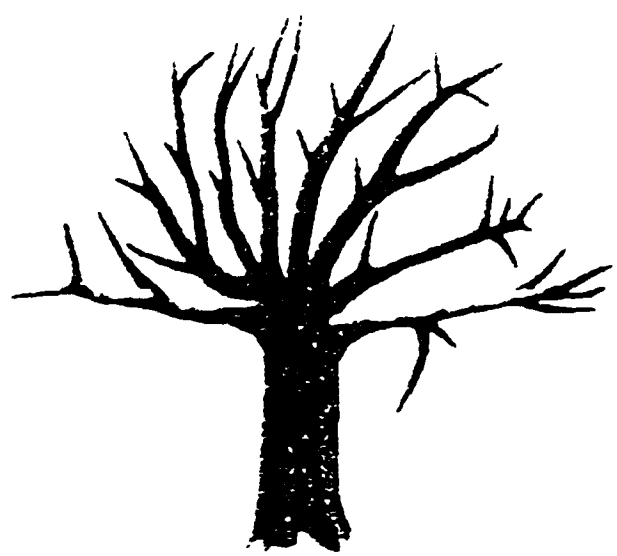
Please note  
Only 300 tickets are available  
Ticket Only Affair  
No money will be collected at the door  
Payment is required before any tickets are issued  
Ticket Sales Close Soon

Please order your tickets from  
Les Wark (9181 2379) or Ann Rochester (9680 3647)

**PRESENTATION NIGHT**

I ..... would like  tickets  
for the Presentation Night @ \$35 each

Please find a cheque (made out to Glebe District Hockey Club) or cash for the number of tickets indicated above



# SNOW ACCOMMODATION JINDABYNE

Unit 10, 15 Kirwan Close, JINDABYNE

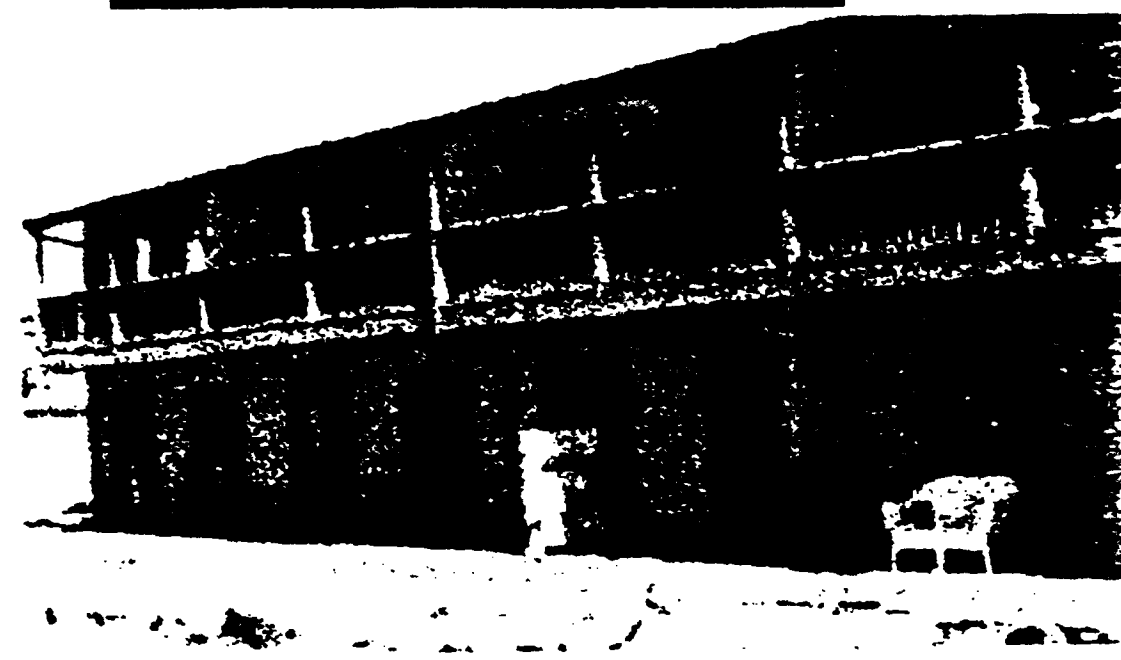
SUMMER \$350 WEEK

*Large, comfortable, brand new luxury townhouse situated*

*close to town and shops.*

- ◆ 3 bedrooms, sleeps 12 (14) comfortably
- ◆ spectacular lakeviews
- ◆ cooking facilities, dishwasher, TV, Video, stereo, heating, doonas, pillows, separate "kids room" or rumpus room with 2nd TV and video, laundry with washing machine and dryer, ski racks and drying room, double garage.
- ◆ please bring sheets, towels, pillow slips etc
- ◆ check in after 3pm out by 10am

Peak 7 days 30 Jul-10 Sep	Holiday 7 days 2-30 Jul, 10 Sept-15 Oct	Value 7 days 28 May-2 Jul
\$1695	\$1195	\$795
Peak 5 days	Holiday 5 days	Value 5 days
\$1255	\$915	\$625
Peak W/En	Holiday W/End	Value W/End
\$895	\$645	\$445



CALL.

JOHN KING.

H 9661-5523

W 9694-1146.

FOR MORE INFORMATION

## Women's News

A very successful 1996 season has resulted in every team making it into the semi-finals of the Eastern Districts Competition.

First Grade, under the coaching guidance of Les Wark, played consistently well all season and were rewarded with a well deserved spot in the Grand Final. Unfortunately we lost against the YWCA with a close score of 3 - 2.

Unfortunately, 2nd Grade didn't get as far after being beaten in the semi with less than 30 seconds on the clock. Similarly 3rd grade, after dominating for most of the game were knocked out after also playing consistently well all year.

The Glebe Fourths won their recent final and have progressed into the Grand Final, however 5th Grade missed out narrowly after being even after extra-time. Due to being lower on the competition table bad luck 5th Grade. However there were some great individual performances from Renae Dillon, Jeneene Barrett and Kylie Lawson. 11 year old Amy Wark played a great game and received the "Players' Player Award", well done Amy.

A fantastic effort by everyone.

See you all at the Presentation Night.

**D**o you need to update your business stationery?

When your business cards run out, your new telephone and fax numbers will need to be shown.

The same will apply to your letterheads, invoices, comp slips and other documents.

Or you may want to present a new image to your clients.

If so, why not give Eddy Crook a ring at

**the  
norton  
agency**

57-59 Renwick Street  
Leichhardt NSW 2040

**PHONE 9550 9011**  
Fax 9560 7635

## *Under the Arches*

*A History of the Glebe District Hockey Club*

By Max Solling & Harry Wark

WE STILL HAVE COPIES AVAILABLE, SO GET YOURS NOW

IF YOU ALREADY HAVE ONE - GET ANOTHER ONE OR TWO  
AND GIVE THEM TO FRIENDS AND RELATIVES  
LET THEM KNOW ABOUT OUR FASCINATING HISTORY

WE STILL HAVE A SMALL NUMBER OF THE SPECIAL EDITION  
A NUMBERED HARDBACK COPY TO SAVE AS A SPECIAL MEMORY

Available at the Clubhouse - Or ask Harry Wark Jnr or Eddy Crook

SOFT COVER \$25

SPECIAL EDITION \$50



**K.C.F.**  
BUILDING  
SERVICES  
PTY LTD

261 PACIFIC HIGHWAY  
NORTH SYDNEY 2060

PH 9966 1741 MOB 019 604 558

"SERVICING YOUR BUSINESS"



**Bishops**

REAL ESTATE AGENTS, VALUERS & CONSULTANTS

275 GEORGE STREET  
SYDNEY NSW 2000  
GPO BOX 4150 SYDNEY 2001

Fax (02) 262 6768  
**TEL (02) 262 6477**

**WHO CAN SUPPLY  
ALL YOUR  
COMMERCIAL  
REAL ESTATE NEEDS**