

Under the Arches

A book outlining the history of the Glebe District Hockey Club to 1993 and subtitled Under the Arches was written by Max Solling and Harry Wark and published in 1994.

This book contains a wealth of information about the Club.

Under the Arches

*A History of the
Glebe District Hockey Club
to 1993*

MAX SOLLING
HARRY WARK

Designed and typeset by
The Norton Agency
57-59 Renwick Street
LEICHHARDT NSW 2040

Published by
The Glebe District Hockey Club Inc
PO Box 10
GLEBE NSW 2037

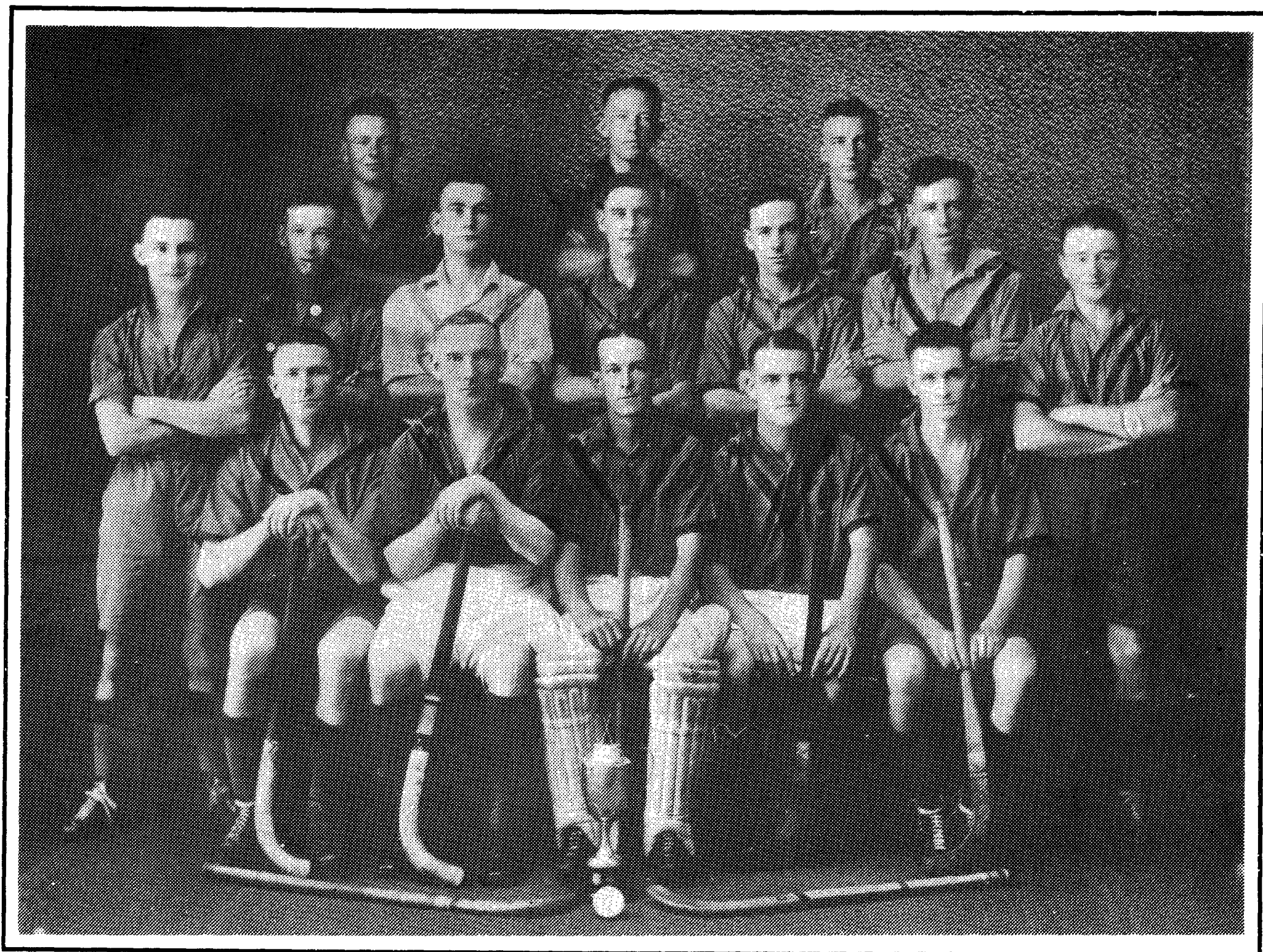
© THE GLEBE HOCKEY CLUB Inc 1994

*This book is copyright.
Apart from any fair dealing
for the purposes of private study,
research, criticism or review,
as permitted by the Copyright Act,
no part may be reproduced by any process
without written permission.
Enquiries should be sent to the publisher.*

National Library of Australia
Cataloguing-in-Publication data

ISBN 0 646 19921 8

Printed by
Winpex Printing Services Ltd
PO Box 66
BOTANY NSW 2019



The first team fielded by the Club, the Saint James Sporting Club Hockey Team of 1931, showing the founder, Brother Maurice McCarten Keegan, who was captain-coach of the side.

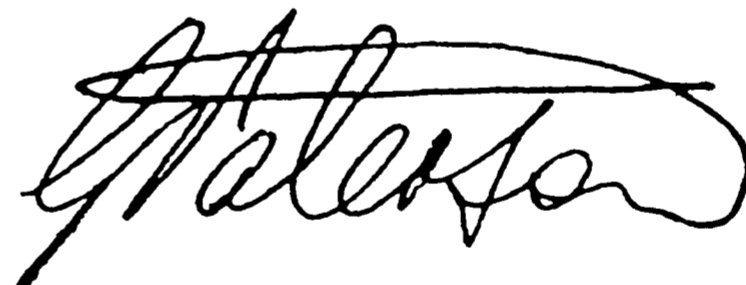
Acknowledgements

The information chronicled in this book is the distillation of information — written, photographic and oral — made available to the authors by hundreds of Glebe players past and present. Principal informants were Tom Taylor (deceased), Kevin O’Leary (deceased), Tom Pearce, Jack Taylor, Denis Donovan (deceased), Ken, Robert and Harry Wark snr, Pat Nilan, Fred Letts, Paul Rogers, York Evans (deceased), Bill and Kevin Ryan, Jim Kenny, Colin Brown and Martin Howe. Mick Tapsell and Amrat Parbhu helped with the photographs. Anne Wark proofread the manuscript. Marilynne Smith deserves a special thanks for proofreading, editing and adjusting the manuscript. Without her painstaking thoroughness, the book could well have been stillborn. Eddy Crook designed and typeset the book. Marilynne and Eddy were a source of inspiration when the authors’ literary energies were almost dissipated. The production of this book owes much to a collection of individuals with different talents contributing to a common cause who have been available at the right time and the right place. Accuracy has been a prime concern in the compilation of this history; but, especially with the spelling of names, information was sometimes sparse. To name everyone who contributed to the lore and knowledge and materials in the history is not possible, but their contributions are gratefully acknowledged.

Foreword

To paraphrase the Duke of Wellington who led the forces that defeated the Emperor Napoleon's army at the Battle of Waterloo on the 18th of June 1815: "The Battle was won on the playing fields of Eton". Sport is many things to many people, but there is no doubt that it has a central position in most societies throughout the world. Max Solling and Harry Wark have captured and recorded the pleasures, aspirations, hopes, disappointments and delights of the ordinary people of an ordinary suburb and their hockey club. The subject material, dealing with the history of the Glebe District Hockey Club, is handled in a sensitive and informative way, and the delights and despairs of the hockey players of Glebe make absorbing reading. Sporting clubs dotted around the suburbs of Australian cities have provided healthy recreation, amusement, moral and social support and stimulation to millions of ordinary Australians. The contribution of these clubs to the social fabric of our society and the positive contribution they have made to the social cohesion of a local community is often overlooked. This book helps redress the lack of information and the little prominence given to the aspirations of the average Australian sportsman and the hundreds of small sporting clubs around the nation. It chronicles the commitment of one generation to its succeeding generations and reaffirms the devotion and commitment which human beings can have for each other given the necessary structure through which to operate.

We, the Glebe District Hockey Club, are delighted with the book and congratulate the authors on a painstakingly thorough history of the best hockey club in Australia.



Geoff Paterson
The President of the Glebe District Hockey Club

Sydney 1994

Preface

Since the Second World War, the name of Glebe has been closely identified with hockey, a tradition that began in 1931 when the Reverend Brother Maurice McCarten Keegan, a Patrician Brother from Galway, taught members of the St James Sports Club the rudiments of the game. Two years later, in the depths of the depression, the Glebe District Hockey Club was born.

From the beginning, family ties to the Glebe Club have been a strong element. Its real strength is the loyalty and outstanding service of its members — an intricate social network has focused around the Club's activities. It became a matter of great pride for a local boy to pull on a maroon guernsey. Jubilee and Federal Park became places that evoked rich memories. Glebe's standard of play makes the game a spectacle, entertaining and sociable for barrackers. Afterwards they fraternised under the arch at Jubilee Oval, discussing the ebbs and flows of the game and enjoying the camaraderie of the Club.

Since its inception the Club has operated on a shoestring budget. There are approximately 18 games per season for each team and 75 members have played more than 200 games for Glebe — a remarkable statistic. Today, it is the largest outdoor sporting organisation in Leichhardt municipality. Many are active for their lifetime and are a source of hockey knowledge and pride. When their best playing days are over they stay on for exercise, to coach the juniors and to socialise under the arch. As a casual local observer, I admired the skill and fierce competitiveness Glebe teams displayed, and asked Fred Letts (then Club Secretary) whether any records have been kept of a club with such a proud tradition. He enthusiastically delivered a rich lode of material for me to mine! These were the bedrock for research, as hockey received little press coverage. Oral contributions from countless members have not only filled in gaps in documentary material, but breathed life and colour into the game in Glebe. I thank them for their generosity and patience.

Due largely to the expertise and assistance of Dr Harry Wark, whose enthusiasm for all things to do with the Club knows no bounds, the original draft has been expanded substantially. Harry has written a comprehensive account of the junior hockey (chapters 8 to 10) and of the women's game in Glebe (chapters 11 and 12) reflecting his deep involvement, knowledge and love for the game and the Club.



Max Solling
Glebe 1994

Contents

	Foreword	5
	Preface	7
	Contents	9
<i>Chapters</i>		
1	Sporting Life in Glebe (1880–1939)	11
2	The Development of Hockey in Sydney and Elsewhere	15
3	Jubilee Oval and Federal Park	19
4	Born in the Depression: Formative Years of the Glebe Club (1931-1945)	27
5	After World War II: Glebe Carries All Before It (1946-1970)	43
6	The Ebbs and Flows of a Vibrant Club (1970-1982)	59
7	The Last Decade (1982-1994)	79
8	The Junior Movement — Why, How, Where, By Whom (1948-1969)	97
9	Juniors : Wax and then Wane (1970-1981)	107
10	Juniors : A Triumph of Dedication over Apathy (1981-1993)	119
11	The Ladies: How It All Began	145
12	Junior Hockey For Girls at Jubilee: The Return to the Fold (1990-1992)	155
13	Into the Future	163
	Illustrations	See Page 209

Continued on next page

Appendices

List of Club Presidents, Secretaries, Treasurers and Club Captains	169
Life Members	171
Premierships Won	172
Australian Selections	174
NSW Seniors Selections	174
NSW Colts Selections	176
NSW Juniors Selections	177
NSW Indoor Hockey Representatives	177
Sydney Hockey Association Club Championship	178
Club Trophies	179
Members of Note and Players with at Least 50 Games	187
Club Memberships — Men Players	202
Women Players	203
Junior Players	204
Social Members	206
Minkey Players	207
Bibliography	212