



# GLEBE DISTRICT HOCKEY CLUB INC

## **Annual Report 2007**

**77<sup>TH</sup> CLUB YEAR**



Kenneth Wark playing 5th grade in 2007

## KENNETH WARK

*On 16 July 2007 Glebe Club stalwart Kenneth Wark was inducted into the NSW Sport's Hall of Champions.*

*Glebe now has two Members, ex-junior players of the Club, who have been honoured with induction into the NSW Hall of Champions. Glebe legend Pat Nilan was induced into the Hall of Champions over ten years ago and now Kenneth Wark.*

*Competitive men's hockey has been played since 1927 and in this time there has been only five men's hockey players who have been induced into the NSW Sports Hall of Champions a great effort by Pat and Kenneth and for the traditions of the Glebe District Hockey Club.*

### **Biography**

Ken's father also called Ken joined the Glebe District Hockey Club in 1947 and played for Australia from 1952 to 1954. Ken senior a total of 492 games for the Club. While "old" Ken battled it out for Glebe on the hockey field, "young" Ken would hit the ball up and down the sideline to amuse himself, supervised by his attentive mother Joyce.

"Young" Ken went to school in the Russell Lea, Haberfield, and Five Dock area, and began playing soccer with his schoolmates when he was around 8 or 9. He played for the Saint Alban's Anglican Church team; Saint Alban's being an Anglican Church situated in Great North Road Five Dock.

When Ken was 14, the Minister moved away from Saint Alban's Church and his replacement did not have the same enthusiasm for sport as his predecessor. The soccer team that Ken had played in for over 6 years could not assemble a side in 1976 and it was this quirk of fate that launched Ken on his hockey career. At the age of 15 Ken decided to try his hand with the Glebe District Hockey Club Under 16 team coached by Colin Brown. This team did not make the semi-finals. In 1977 Ken's Under 16 team were beaten 2-1 in the grand-final by Moorebank. In the later part of the 1977 season Ken played in the afternoon for the Glebe sixth grade team that won the Premiership.

Ken quickly acquired the fundamentals of the game and in 1978 played left half alongside Buster Birmingham in the Premiership winning Glebe Third Grade team. In 1979 Ken made the Glebe first grade team at the age of 18. In 1981 he was selected in the NSW Under 21 team and in 1983 made the NSW senior team.

After the Australian Championships in 1984 he was selected to go to the Australian Institute of Sport, which for hockey was in Perth. Ken had just finished his apprenticeship as a marine fitter with Howard Smith, a stevedoring firm in Balmain and they had offered him a permanent position. It was not an easy decision for Ken or his family at the time, but after much debate he accepted the two-year AIS Scholarship.

He was first selected for Australia in 1985 and played his last game for Australia in 1996, having continuously represented his country for 12 years. His last game for Australia was in the Bronze Medal game at the Atlanta Olympics, which Australia won. In all Ken played 214 games for Australia, in over 20 countries around the world. In 1990, after the Tournament of Champions competition played in Melbourne, he was named in the FIH selected world best team. At the Australian Championships in 1987 and in 1991 he was named as the player of the series, the

best player in Australia at that time. He is one of a rare breed of players to have ever won this honour twice.

Ken was in the Australian team that won the World Cup for Australia in 1986 and has been in Australian teams that have won Champion's Trophy Competitions. He played at three Olympic Games, in 1988 at Seoul, in 1992 at Barcelona where he won a Silver Medal and in 1996 at Atlanta where he won a Bronze Medal. The only honour that eluded Ken in his international career was an Olympic Gold Medal.

Ken played in NSW senior teams from 1983 until 1997, a total of 15 seasons. He captained the NSW team in the nineties and led it to two Australian Championship victories.

Above all else, Ken was a Glebe man from the beginning of his career to its end. Every time he took the field for his beloved maroon and white, he played as if he was playing for his country. His First Grade career spanned an amazing 26 years from 1979, when he played his first, First Grade game to 2004, when he played his last First Grade game. In 2004 he only played one First Grade game, helping out to fill a gap left by regular first grade players who were away on representative duty.

In 1982, 1995 and in 1997 Ken played in First Grade Premiership winning teams for Glebe, in the Sydney Hockey Association Competition. He captained the 1995 and 1997 teams. In 1978 he played in the Glebe Premiership winning Third Grade team and in 2003 he captained the Premiership winning Glebe Second Grade team. He has played in Glebe teams that have won premierships in first, second and third grades. In all he has played 400 games for Glebe, with over 350 being in First Grade.

In every season he has played with the Glebe Club, Ken has paid his fees like every other Club Member. At various stages of his career Ken was offered money to play elsewhere, but his loyalty to Glebe prevented him from taking up any of these offers. He has held several administrative positions with the Club and has contributed to Club affairs "off" the field. In the last couple of years Ken has been unselfishly imparting his encyclopaedic knowledge of the game to the younger Members of the Club.

A tall chap, Ken had blistering speed, a long reach and outstanding athleticism. In the book written by Ric Charlesworth titled "The Coach", (Macmillan 2001), pages 222 and 223, Ken is selected by Charlesworth in the best Australian team of the 1960-2000 era. In this book Charlesworth quotes a survey of 33 people conducted by Richard Aggiss to find the best twelve Australian male players of the century. Ken was ranked ninth in this survey. Without doubt Ken has left his mark on World, Australian, New South Wales and Sydney Hockey. He is one of Glebe Hockey Club's greatest sons and the Glebe Club is immensely proud of him and his achievements.

In 1995 Ken married schoolteacher and fellow hockey player Kerrie Banfield, who hails from Crookwell NSW and they live at Kogarah. They have three adopted children and it will not be long, no doubt, before they are introduced to the sport of hockey.

Ken has worked on and about Sydney Harbour all his working life, starting as an apprentice marine fitter on the Balmain waterfront in the ship repair industry. He currently works for the State Government's NSW Maritime Environmental Services and can often be seen helping to keep the harbour estuaries in pristine condition.

Ken has been a great contributor to the community, both on and off the hockey field.

Congratulation Ken

## **This is what makes this Club Great**

### **Team Spirit**

Mark Paterson congratulating Josh LaSpina scoring his first goal in 1<sup>st</sup> Grade



# GLEBE DISTRICT HOCKEY CLUB Inc

## Founder - The late Reverend Brother McCarten Keegan

### OFFICE BEARERS AND OFFICIALS — 2007

Patron	Ken Wark
President	Bob Taylor
Vice President	Colin Rochester
Secretary	Les Wark
Public Officer	Tim Sutton
Treasurer	Tim Sutton
Assistant Secretary/ Treasurer	Geoff Bortfield
Club Captain Men's (Grades 1 – 3)	Danny O'Brien
Club Captain Men's (Grades 4 – 7)	Graeme Brown
Club Captain Women	Raelene Lindeberg
Clubroom Manager	Michael Bougoukas (half year)
Women Convener	Amy Wark
Junior Development Officer	Mark Noller
Equipment Officer	Andrew Goodrick
Social Organizer	Ian Paterson
Management Committee	Bob Taylor, Colin Rochester, Les Wark, Tim Sutton, Geoff Bortfield, Danny O'Brien, Graeme Brown, Andrew Goodrick, Mark Noller, Amy Wark. Ian Paterson

#### LIFE MEMBERS

B Bates *	C Brown	R Brown
K Dickey *	J Diviney *	G Gilmour
M Howe	Margaret Howe	J Kenny *
F Letts	P Nilan	G Paterson
K Paterson *	J Quinland *	P Rogers
W Ryan *	W Stubbs	Mrs Taylor *
Bob Taylor	H Wark Snr *	H Wark Jnr
K Wark Snr	Molly Wark	Les Wark
R Wark		J Worley *
* Deceased		

#### HON AUDITORS

Stephen W. Van and Associates  
206 St. Johns Road, Glebe NSW 2037

The Glebe District Hockey Club extends its appreciation for their time and support given

# Roll of Honour

## Past Principal Office Bearers

Year	Honary President	Honary Secretary	Honary Treasurer	Club Captain	Year	Honary President	Honary Secretary	Honary Treasurer	Club Captains
1932	E Mockler	J Donovan	JW Taylor	Not Established	1977	P Nilan	F Letts	K Wark	R Brown
1933	E Mockler	J Donovan	JW Taylor	Not Established	1978	R Brown	G Manou	K Kipp	I Mutton
1934	E Mockler	Gmockler	JW Taylor	Not Established	1979	F Letts	B Pink	K Kipp	I Mutton
1935	E Mockler	JW Taylor	R Dunn	Not Established	1980	F Letts	B Pink	C Savva	I Mutton
1936	E Mockler	JW Taylor	J Quinlan	Not Established	1981	G Gilmour	B Pink	R Wark	L Wark
1937	E Mockler	JW Taylor	J Quinlan	Not Established	1982	G Gilmour	D O'Brien	K Kipp	L Wark
1938	C Humphries	JW Taylor	J Quinlan	Not Established	1983	G Gilmour	D O'Brien	N Gullickson	L Wark
1939	C Humphries	C Eling	J Quinlan	Not Established	1984	G Gilmour	K Paterson	N Gullickson/ I Treharne	K Sweeney
1940	C Humphries	J Worley	J Quinlan	Not Established	1985	P Howe	K Paterson	I Treharne	D O'Brien
1941	C Humphries	J Worley	J Quinlan	Not Established	1986	D O'Brien	K Paterson	P Howe	C Rochester
1942	C Humphries	JW Taylor	J Quinlan	Not Established	1987	R Wark	I Treharne	P Howe	K Sweeney
1943	C Humphries	W Ryam	JW Taylor	Not Established	1988	R Wark	D O'Brien	P Howe	P Busch
1944	C Humphries	W Ryam	JW Taylor	Not Established	1989	R Wark	G Wark	I Treharne	P Busch
1945	C Humphries	W Ryam	JW Taylor	Not Established	1990	R Wark	D O'Brien	I Treharne	P Busch
1946	J Worley	JW Taylor	H Butler	Not Established	1991	R Wark	D O'Brien	I Treharne	D Rochester
1947	J Worley-	M Steedman	H Butler	Not Established	1992	G Paterson	K Corkery	B Taylor	P Busch
1948	J Worley-	P Rodgers	W Ryan-	H Butler	1993	G Paterson	K Corkery	B Taylor	P Busch
1949	J Worley-	P Rodgers	W Ryan-	F Needham Jnr	1994	G Paterson	K Corkery	B Taylor	P Busch
1950	J Worley	F Needham	N Walker	F Murray	1995	G Paterson	K Corkery Les Wark	G Dunn	C Stubbs
1951	J Worley	F Needham	N Walker	F Murray	1996	G Paterson	Les Wark	B Taylor	K Chivers
1952	J Worley	F Needham	N Walker	F Murray	1997	G Paterson	Les Wark	B Taylor	K Chivers
1953	J Worley	F Needham	N Walker	F Murray	1998	B Taylor	E Crook	G Dunn	K Chivers
1954	J Worley	WF Ryan	NWalker	H Wark	1999	B Taylor	E Crook	G Dunn	S Nilan
1955	J Worley	R Thorpe	A Robb	H Wark	2000	B Taylor	E Crook	G Dunn	D O'Brien
1956	J Worley	R Thorpe	H Butler	H Wark	2001	B Taylor	E Crook	L Howard	D O'Brien
1957	J Worley	R Thorpe	J McParland	H Wark	2002	B Taylor	L Wark	M Newton	J Wright M.Bougakas
1958	N Walker	R Thorpe	G collett	G Harris	2003	B Taylor	L Wark	M Newton	A Oman M.Bougakas
1959	N Walker	R Thorpe	G Harris	V Westacott	2004	B Taylor	L Wark	M Newton	A Oman M.Bougakas
1960	N Walker	R Thorpe	W Stubbs	V Westacott	2005	B Taylor	L Wark	M Newton	A Oman G.Brown
1961	N Walker	R Thorpe	W Stubbs	H Wark	2006	B Taylor	L Wark	M Newton	D O'Brien G.Brown

1962	K Dickey	R Thorpe	J Thomson W Stubbs	H Wark	2007	B Taylor	L Wark	T Sutton	D O'Brien G.Brown
1963	K Dickey	R Thorpe	A Stubbs	P Nilan					
1964	K Dickey	F Letts	B Howe	P Nilan					
1965	K Dickey	F.Vanderputt	B Howe	P Nilan					
1966	G Harris	F.Vanderputt	F Letts	P Nilan					
1967	W Stubbs	F Letts	F Whiteman	R Brown					
1968	W Stubbs	F Letts	L Weale	R Brown					
1969	W Stubbs	F Letts	K Wark	R Brown					
1970	W Stubbs	F Letts	K Wark	R Brown					
1971	W Stubbs	F Letts	F Whiteman	P Nilan					
1972	P Nilan	F Letts	F Whiteman	M Howe					
1973	P Nilan	F Letts	K Kipp	R Brown					
1974	P Nilan	F Letts	K Kipp	R Brown					
1975	P Nilan	F Letts	K Kipp	R Brown					
1976	P Nilan	F Letts	K.Wark	I Mutton					
1977	P Nilan	F Letts	K Wark	R Brown					



Club Stalwart & Historian, Harry Wark re-viewing warm-up drill in the U/11

## WOMEN'S ROLE OF HONOUR

Year	President	Convenor	Secretary	Treasurer	Club Captain
1934	Jack Dwyer		Dennis Dovovan	Unknown	Unknown
1935	Jack Dwyer		Dennis Dovovan		
1978	Molly Wark		Molly Wark	Jan Hammond	No Appointment
1979	Molly Wark		Molly Wark	Jan Hammond	No Appointment
1980	Molly Wark		Molly Wark	Jan Hammond	No Appointment
1981	Molly Wark		Molly Wark	Jan Hammond	No Appointment
1982	Molly Wark		Molly Wark	Jan Hammond	No Appointment
1983	Molly Wark		Molly Wark	Jan Hammond	No Appointment
1984	Molly Wark		Molly Wark	Jan Hammond	No Appointment
1985	Molly Wark		Molly Wark	Jan Hammond	No Appointment
1986	Molly Wark		Judy Dean	Jan Hammond	No Appointment
1987	Molly Wark		Judy Dean	Jan Hammond	Anne Rochester
1988	Molly Wark		Jill Strachan	Jan Hammond	Lisa Williams
1989	Janice Farquarson		Jill Strachan	Pauline Sunderland	Jenny Evans
1990	Janice Farquarson		Roberta Inns	Pauline Sunderland	Elaine Trodden
1991		Anne Rochester	Linda Glasscock	Jeanette Brazel	Jane Goldsmith
1992		Elaine Trodden	Jane Goldsmith	Anne Rochester	Michelle Opitz
1993		Anne Rochester	Jane Goldsmith	Fiona McVicar	Michelle Minett
1994		Anne Rochester	Jane Goldsmith	Elaine Trodden	Michelle Opitz
1995		Anne Rochester	Cathy Busch	Anne Rochester	Michelle Minett
1996		Carole Wark	Anne Rochester	Christine McNicol	Margaret Howe
1997		Carole Wark	Carmen Byrne	Christine McNicol	Margaret Howe
1998		Carmen Byrne	Mary Wark	Neale Lawson	Margaret Howe
1999		Carmen Byrne	Mary Wark	Neale Lawson	Margaret Howe
2000		Carmen Byrne	Mary Wark	Neale Lawson	Margaret Howe
2001		Carmen Byrne	Mary Wark	Neale Lawson	Lisa Usher
2002		Mary Wark	Rachel Wilkinson	Neale Lawson	Lisa Usher
2003		Moria Williams	Gabrielle Wark	Neale Lawson	Rachel Wilkinson
2004		Moria Williams	Gabrielle Wark	Vacant	Helen Howe
2005		Moria Williams	Gabrielle Wark	Ellie Williams	Helen Howe
2006		Amy Wark	Gabrielle Wark	Kylie Lawson	Helen Howe
2007		Amy Wark	Helen Howe	Kate Pearsall	Raelene Lindeberg

**Note 1** The 1934 and 1935 teams played as the Saint James' Sports Club Women's Hockey Team. Jack Dwyer and Dennis Donovan were Office Bearers of the Saint James' Sports Club. The Saint James' Sports Club Men's Hockey Team (1931-1932), became the Glebe District Hockey Club in December 1932

**Note 2** Since November 1990, the Women's Club has been a Division of the Glebe District Hockey Club. Prior to 1991 the Women's Club was a separate entity to the Glebe District Hockey Club. After 1990 the Women's President's position was referred to as the Women's Convenor's position. The responsibilities were the same, except that the Women's Convenor reported to the Management Committee of the Glebe District Hockey Club, in the same way as do the Junior Convenor and the Social Convenor.

**Note 3** Any inaccuracies in this list should be brought to the attention of the Management Committee, so that appropriate amendments can be made

### First Grade Men's Penalty Corner Defense



L-R Matthew Wark, Dean Benfield (GK), Adam Howard, Alister Cullen, Darryn Booth (behind)

Kate Gleeson  
3<sup>rd</sup> Grade Women  
Best and Fairest  
Trophy Winner



## President's Report

2007 has been another very strong year for the club and I would like to thank everybody for their support during the season.

A particular note of thanks to the coaches, managers and support staff throughout the three divisions of the Club. Without these people it would be impossible to achieve the results we have and come to expect.

We had some memorable moments on the playing fields and this year the juniors had a good year in terms of premierships. The ladies and men were not so fortunate but as always we were more than competitive and in some cases very unlucky not to have finished in a better position.

To our sponsors we again thank you for your considerable support and look forward to your continued involvement in the future.

Our financial position remains in great shape and we thank all members for supporting our fund raising activities during the year.

Over many years we have been very fortunate as a Club to have a strong and dedicated management committee and this year was no exception. On behalf of the members I would like to thank them personally for their involvement and hope to see them all again next season

Bob Taylor



5th Grades Penalty Corner Defense

L-R Les Wark, Craig Bagley, Liam O'Donnell (GK), Leo Kalisperis, Kenneth Wark

## Secretary's Report

Ladies and Gentlemen it give me great pleasure to present the 2007 Secretaries Report.

The Club started in 2005 to rely much more on electronic communication where now all communication is going out electronic or posted on the WEB. Our WEB site is one of the best Hockey sites in Australia with lots of information, match reports and gossip posted by a larger number of Club members These Members are putting a lot more produce to read on the site which makes the site very interesting and informative. I would also like to thanks Louise Tapsell's contribution to the site and the Club newsletter and Mark and Deb Noller who are always putting things onto the WEB Site and in the background finding solutions to all our technical issues.

I can only stress that for the electronic flow of information to be successful the Club must have your correct data and it is up to you to advise the Club of any changes that has occurred to your email address.

The Club's records and pictures are being posted on the WEB. This is being co-ordinated by Harry Wark and a grant from the Sydney City Council. Harry is doing a fantastic job and the Club would like to thanks Harry for his efforts. Please visit this site on our WEB site and you will be surprised on how good it is. Harry has assured me that there is lot more yet to come.

At present a group is looking at the Management structure of the Club to see if it can be improved to meet the future needs of the Club and its members. More information and membership discuss will be happening in early 2008.

During the year the Sydney City Council approved in principle of a artificial surface being built at Perry Park, Alexandra. The Council is at present doing a Park Master Plan which is due to be completed in February 2008, where it will be put to Council for funding in the 2008/ 2009 Budget. Please see Turf Report for more details and a plan of the proposed field. I would like to thank the Turf Committee of Craig Bagley, Rod Hammett, Jim Oman, who work tirelessly behind the scenes moving the Turf closer to reality.

I would like to publicly thank. Geoff Bortfield, the assistant Club Secretary, Mark Noller Junior Convener, Danny O'Brien and Graeme Brown who do a fantastic job of getting teams on the field every week, Amy Wark, & Raelene Lindeberg and to all the Captains of all sides who manage and record all the Team details every week.

To all the Coaches and Managers who give their time freely to coach, inspire and develop all who pick up a Hockey Stick, thank you. You really are the passers on of that fantastic Glebe Hockey Club Spirit

To my family thank you for all your support and assistance during the year.

See you all next year

Les Wark

# Treasurer's Report

It gives me pleasure to report on the Club's financial position as at 31 October 2007 and its financial operations for the past year. The Club remains in a strong financial position. The result was a Profit of \$14,722 (2006 – profit of \$16,036).

A small increase in Player Fees was introduced for 2007. The fee structure was also simplified, and more standardised between Men and Women. A discount was available for early payment via electronic transfer, which was very successful. Men's fees were higher due to increased player numbers. Women's fees recorded a slight increase. There was a decline in Member's and Junior's fees. Unfortunately, the collection of fees for a minority of players continues to be difficult and time consuming, and the future treatment of late paying members requires further consideration.

The club relies upon fundraising to keep fees as low as possible and to be competitive with other clubs. There was an increase in Sponsorship, Donations, and Other Income compared to prior year. The current year included the receipt of grants, which have funded record keeping, and clubroom improvements. We continue to receive great financial support from our sponsors, including the Toxteth Hotel, and Galuzzos. Social Functions and Raffles income (net of associated costs) were relatively comparable to prior year, with highlights including the presentation function, the band night at the clubhouse, and the successful club raffle.

Bar Trading was negatively impacted due to a number of wet days, which reduced the attendance and amount of days of training. There also continues to be a reduced number of Saturday games played at Jubilee. Some social functions were held during the year at the Clubhouse. The engagement of a Clubroom Manager for the entire year is likely to assist revenues.

Equipment Trading is considered a service to players and not expected to be very profitable. The loss for the year included the effect of subsidising the cost of the new Women's uniforms, and related write-offs in relation to the old uniforms on hand. In addition, for promotion reasons, the club purchased water bottles, many of which will be given away, and these costs have also been written off. Apart from these factors, equipment trading would have resulted in a small loss of approximately \$500.

Interest Income has increased due to higher average balances being maintained in the cash management account, and due to increased rates.

Playing Costs increased when compared to 2006. Men's costs increased significantly, particularly due to the changed structure of the competition for the top two grades, with increased costs associated with increased games played. The cost structures for the Women's competitions also increased significantly, which was partly compensated by reduced coaching expenses. Equipment purchases, including balls and markers, were higher across the club.

Other Expenses other than Playing Costs and Social Function costs increased compared to the prior year, largely due to one off and unbudgeted expenses. These included surveying costs in respect of the potential turf pitch at Alexandria, and the purchase of a new BBQ and projector for the clubhouse.

It is noted that the club has remained profitable due to investment income, bar trading, sponsorship, and fund raising activities. These income streams have covered losses in other areas, including the fact that playing costs have exceeded fee income in recent years. Important challenges to overcome include the need to remain financially viable, whilst seeking to keep fees at acceptable levels. There needs to be continued focus upon securing and maintaining donations and sponsorship.

Thank You to the large number of members who have contributed to the financial running of the club, including those who have collected fees, raffle, canteen, equipment, and social function income, and collated invoices and other expenses, and contributed to the banking of monies. Amongst a large group of people, I would like to highlight the efforts of Kate Pearsall, Amy Wark, Helen Howe, Kylie Lawson, Raelene Lindeberg, Bobby Taylor, Les Wark, Geoff Bortfield, Graham Brown, Danny O'Brien, Andrew Goodrick, Mark Noller, Michael Bougoukas, and Ron Cheong and the workers in the Canteen during the year.

Tim Sutton



#### Glebe Under 17 Premiers

**Back l-r:** Gus Malfroy, Scott Cleary, Oliver Holyoake, Ross Bougoukas, Aleks Manou, Chris Holmes, Archie Hughes

**Front l-r:** George Manou (Manager), Jack Stocker, Arvind Hughes, Sam Noller (Capt), Chris Loukakis, Andrew Palmer, Dominic Kavanagh, Josh La Spina, Matt Redenbach, Les Wark (Coach)

**Absent:** Dean Morrow (Ass. Coach)

**GLEBE DISTRICT HOCKEY CLUB INCORPORATED**

**BALANCE SHEET**

**AS AT 31 OCTOBER 2007**

	<b>2007</b>	<b>2006</b>
<b>CURRENT ASSETS</b>		
Cash at Bank	1,297.57	3,191.75
Deposits	177,674.27	163,956.77
Telstra Shares	2,808.00	2,376.00
Stock on Hand	4,599.25	4,190.00
GST Refundable	2,675.11	617.59
	<hr/>	<hr/>
<b>TOTAL ASSETS</b>	189,054.20	174,332.11
	<hr/>	<hr/>
<b>CURRENT LIABILITIES</b>		
Creditors	600.00	600.00
	<hr/>	<hr/>
<b>TOTAL LIABILITIES</b>	600.00	600.00
	<hr/>	<hr/>
	<hr/>	<hr/>
<b><i>NET ASSETS</i></b>	188,454.20	173,732.11
	<hr/>	<hr/>
<b>MEMBERS FUNDS</b>		
Balance Brought Forward	173,732.11	157,695.20
Add: Profit for the Year	14,722.09	16,036.91
	<hr/>	<hr/>
<b><i>TOTAL MEMBERS FUNDS</i></b>	188,454.20	173,732.11
	<hr/>	<hr/>

**GLEBE DISTRICT HOCKEY CLUB INCORPORATED**

**INCOME AND EXPENDITURE**

**FOR THE YEAR ENDED 31 OCTOBER 2007**

	<b>2007</b>	<b>2006</b>
<b>INCOME</b>		
Fees - Men	29,622.83	24,802.16
Fees - Women	18,960.82	18,659.12
Fees - Juniors and Membership	6,341.80	7,986.36
Sponsorship, Donations and Other Income	22,418.45	10,959.00
Bar Trading - Net	3,611.45	6,703.27
Equipment Trading - Net	(3,457.13)	(2,116.52)
Social Functions and Raffles	13,273.08	11,237.40
Bank Interest and Dividends	11,498.04	10,498.10
Share Gains	432.00	(156.00)
Insurance Levy - Men	2,100.00	2,427.03
	<hr/>	<hr/>
<b>TOTAL INCOME</b>	104,801.34	90,999.92
	<hr/>	<hr/>
<b>EXPENSES</b>		
Accountancy and Audit	400.00	400.00
Administration Costs	2,185.51	3,950.62
Bank Charges	609.86	893.30
Honorarium	800.00	800.00
Playing Costs - Men	35,412.74	29,712.05
- Women	23,154.30	21,280.19
- Juniors	9,825.64	9,973.74
Representation Allowances	1,090.96	1,136.40
Social Function Costs	8,451.62	4,826.36
Trophies	1,741.42	1,990.35
Turf and Legal Expenses	2,180.00	-
Repairs and Maintenance	4,227.20	-
	<hr/>	<hr/>
<b>TOTAL EXPENSES</b>	90,079.25	74,963.01
	<hr/>	<hr/>
<b>NET PROFIT FOR THE YEAR</b>	14,722.09	16,036.91
	<hr/>	<hr/>

**GLEBE DISTRICT HOCKEY CLUB INCORPORATED**

**REVENUE ACCOUNT**

**FOR THE YEAR ENDED 31 OCTOBER 2007**

	<b>2007</b>	<b>2006</b>
<b><i>BAR TRADING ACCOUNT</i></b>		
SALES	9,937.64	14,800.68
	<hr/>	<hr/>
LESS COST OF SALES:		
Opening Stock	1,103.00	200.00
Purchases	6,555.94	9,000.41
	<hr/>	<hr/>
	7,658.94	9,200.41
Less Closing Stock	1,332.75	1,103.00
	<hr/>	<hr/>
TOTAL COST OF SALES	6,326.19	8,097.41
	<hr/>	<hr/>
<b>BAR TRADING NET INCOME</b>	<b>3,611.45</b>	<b>6,703.27</b>
	<hr/>	<hr/>
<b><i>EQUIPMENT TRADING ACCOUNT</i></b>		
SALES	5,874.72	4,061.84
	<hr/>	<hr/>
LESS COST OF SALES:		
Opening Stock	3,087.00	7,757.00
Purchases	9,511.35	3,629.00
Glasses distributed to juniors	-	(2,120.64)
	<hr/>	<hr/>
	12,598.35	9,265.36
Less Closing Stock	3,266.50	3,087.00
	<hr/>	<hr/>
TOTAL COST OF SALES	9,331.85	6,178.36
	<hr/>	<hr/>
<b>EQUIPMENT TRADING NET INCOME</b>	<b>(3,457.13)</b>	<b>(2,116.52)</b>
	<hr/>	<hr/>

**GLEBE DISTRICT HOCKEY CLUB INCORPORATED**

**2008 FORECAST**

<b>2007 FORECAST</b>	<b>2007 ACTUAL</b>		<b>2008 FORECAST</b>
		<b>INCOME</b>	
26,000.00	29,622.83	Fees - Men	31,000.00
19,000.00	18,960.82	Fees - Women	20,000.00
7,000.00	6,341.80	Fees - Juniors and Membership	6,700.00
10,000.00	22,418.45	Sponsorship, Donations and Other Income	8,000.00
4,500.00	3,611.45	Bar Trading - Net	5,000.00
250.00	(3,457.13)	Equipment Trading - Net	500.00
11,000.00	13,273.08	Social Functions and Raffles	14,000.00
8,500.00	11,498.04	Bank Interest and Dividends	11,500.00
-	432.00	Share Gains	-
2,400.00	2,100.00	Insurance Levy - Men	2,200.00
<hr/>	<hr/>		<hr/>
88,650.00	104,801.34	<b>TOTAL INCOME</b>	98,900.00
<hr/>	<hr/>		<hr/>
		<b>EXPENSES</b>	
500.00	400.00	Accountancy and Audit	500.00
2,600.00	2,185.51	Administration Costs	2,500.00
1,200.00	609.86	Bank Charges	700.00
800.00	800.00	Honorarium	800.00
32,000.00	35,412.74	Playing Costs - Men	37,000.00
23,000.00	23,154.30	- Women	25,500.00
12,500.00	9,825.64	- Juniors	10,500.00
1,000.00	1,090.96	Representation Allowances	1,200.00
9,000.00	8,451.62	Social Function Costs	9,000.00
2,500.00	1,741.42	Trophies	2,500.00
-	2,180.00	Turf and Legal Expenses	4,000.00
500.00	4,227.20	Repairs and Maintenance	800.00
<hr/>	<hr/>		<hr/>
85,600.00	90,079.25	<b>TOTAL EXPENSES</b>	95,000.00
<hr/>	<hr/>		<hr/>
3,050.00	14,722.09	<b>NET PROFIT FOR THE YEAR</b>	3,900.00
<hr/>	<hr/>		<hr/>

# AUDITORS' REPORT

## TO THE MEMBERS OF THE GLEBE DISTRICT HOCKEY CLUB INC

### SCOPE

I have audited the financial report of the Glebe District Hockey Club Incorporated for the year ended 31 October 2007. The elected committee of the Club is responsible for the preparation and presentation of the financial report and the information contained therein. I have conducted an independent audit of the financial report in order to express an opinion on it to the members of the Club.

My audit has been conducted in accordance with Australian Auditing Standards to provide reasonable assurance as to whether the financial report is free of material misstatement. My procedures included examination, on a test basis, of evidence supporting the amounts and other disclosures in the financial report and the evaluation of accounting policies and significant account estimates. These procedures have been undertaken to form an opinion as to whether, in all material respects, the financial report is presented fairly in accordance with the Australian Accounting Standards and the provisions of the Associates Incorporations Act of (NSW) so as to present a view which is consistent with our understanding of the financial position of the Club, the results of its operations and its cash flows.

The audit opinion expressed in this report has been formed on the above basis.

### AUDIT OPINION

In my opinion, the financial report presents fairly the financial position of the Glebe District Hockey Club Incorporated as at 31 October 2007 the results of its operations and its cash flow for the year ended 31 October 2007 in accordance with applicable Accounting Standards, and with the provisions of the Associations Incorporations Act of (NSW).

**Date:** 19 November 2007

**Firm:** Stephen W Van & Co  
CPA

**Address:** 185 William Street  
EARLWOOD NSW 2206

**Signed:** \_\_\_\_\_

**GLEBE DISTRICT HOCKEY CLUB INCORPORATED**

**STATEMENT BY OFFICERS**

**FOR THE YEAR ENDED 31 OCTOBER 2007**

In the opinion of the officers of the Club: -

- a) The accompanying Income and Expenditure Statement is drawn up so as to give a true and fair view of the results of the Club for the year ended 31 October 2007.
- b) The accompanying Balance Sheet is drawn up so as to give a true and fair view of the state of affairs of the Club at 31 October 2007.
- c) There are no circumstances, not otherwise dealt with in the financial statements that would render any amount stated in the accounts misleading.

For and on behalf of the officers of the Club: -

Officer \_\_\_\_\_

Officer \_\_\_\_\_

Dated this \_\_\_\_\_ 2007

**Auditor's Independence Declaration**  
**For the year ended 31 October 2007**

In relation to my audit of the financial report of Glebe District Hockey Club Incorporated for the financial year ended 31 October 2007, to the best of my knowledge and belief there have been no contraventions of the auditor independence requirements of the Corporations Act 2001 or any applicable code or professional conduct.

***STEPHEN W VAN & CO***

***STEPHEN W VAN***

SYDNEY: 19 November 2007

## Men's Senior Grades Captain's Report

I would like to start off my report by thanking my fellow club captain Graeme Brown. Graeme and I spent many hours during the year trying to select, reselect and re- reselect the teams each week, due to so many players being out, or pulling out late.

Also, I would like to thank both the 1<sup>st</sup> and 2<sup>nd</sup> grade coaches Geoff Paterson and Rob McDonald for their efforts during the year along with Peter Busch in his role as captain/coach of 3rds. But, let's not forget our team managers John Nilan and Steve Howard (1<sup>st</sup> and 2<sup>nd</sup> grade). Your efforts were greatly appreciated by all. Special mention must also go to Harry Wark who each week starred as ball boy for our 1<sup>st</sup> grade side. Thank you H.

We certainly are facing many challenges with the way the competition is structured and the amount of players who are out each week. It seems the days of players not missing a game, except for representative duty, are gone. Each week we have anywhere between 10-20 players out and this makes it difficult for all concerned to get the best performance from each team.

Combinations are hard to build along with a sense of this is "my team" when so many players continually filter through several sides during the season. I'm sure we are not the only club, but, I know it certainly impacts on our results and makes it very difficult at finals time.

Whether we need in the future to look at squads of 13/14 per team, I don't know. But it is certainly something we might have to consider. At least this way, if people are out we are not disadvantaging the whole club with wholesale changes week to week. This would also allow managers and coaches to manage their teams better and have some continuity. The old chestnut of course is that players want to play a full game – and don't we all - but times change and maybe this will solve some of the problems we currently experience.

That said, the year was another great one despite not winning a senior title. Players again doubled-up, trained hard and gave their all on game day and that's all we can ask. 1sts won the minor premiership, the Allan Yates Cup and all teams except for 2<sup>nd</sup> grade made the semis. That in itself is a great result.

In closing, I would like to take this opportunity to wish all club members a merry Christmas and a happy new year in 2008.

Danny O'Brien

## Men's Lower Grades Captain's Report

Firstly, I would like to thank Danny O'Brien for the help he has given me throughout the year. Danny has been a great help not only to myself but to the Club as a whole, I feel that he is an asset to the Club.

Secondly Congratulations to 4<sup>th</sup> Grade for making the Grand Final and to 6<sup>th</sup> Grade for making the Semi Finals. Once again it was a tough year to select the teams as many players were unfortunately non committal to the Club and their teams (letting down their team mates). In my opinion I felt that all four teams should have made the finals but due to lack of commitment by players this did not occur. It was most disappointing due to knowing that we had very good players in the bottom four grades.

I would also like to take this opportunity to thank the Captains of the teams for making my job each week a lot easier. This was done by the open communication and early notice of changes within their teams. It is promising to see so many young juniors coming through the ranks with humble attitudes and no egos. The juniors seem to be hungry for any type of help whether it is in the form of information, training, and knowledge of the game that will give them the edge over other competitors.

In closing it is good to know that the Club will remain competitive due to the juniors that are coming through into the senior ranks and the quality of coaches, which pass on their technical skills to the young.

I wish everybody a very Happy Christmas and a safe New Year.

Graeme Brown



Two Players of the Future  
Jake Ribarovski & Scott Cleary

## Junior Convenor's Report

It is with much pleasure that I present the 2007 Annual Junior Report in this, the Club's 77<sup>th</sup> year.

It was a very early start this year in March, so was difficult to field players and coaches for the first few games. We fielded 7 teams (1 x U17, 2 x U15, 2 x U13 & 2 x U11), and more than 100 children registered to play. These numbers are slightly down on 2006, however this is a common theme with most clubs in Sydney. In particular, there has been a noticeable drop in U11 players and this is being addressed by Sydney Junior Hockey. As a Club, we must also reverse this negative trend and we plan to have more pre-season activity to attract numbers.

Results for the year were as follows:

Team	Position	Coach	Manager
U17A	Premiers	Les Wark	George Manou
U15A Redbacks	Joint Premiers	Phil Sheard/Dean Morrow	Phil Sheard
U15B Strikers	6th	Catherine Wark	Julia Hush
U13A Redbacks	6th	Alan Doughty/Terry Kelly	Colleen Madycki
U13B Strikers	4th	Sam Noller/Josh La Spina/Harry Wark	Greg Organ
U11A Redbacks	2nd	Simon Wark/Amy Wark	Shanti Hughes
U11B Strikers	2nd	Alison & Andrew Cheong	Gina Frampton

So a great result with two premierships and two grand final appearances out of seven teams. Congratulations to all teams and a very big thank you to the coaches and managers.

It was great to see our U17A team once again hold the SHA Premiers pennant after winning it three years in a row from 2003-05. There was a real Glebe spirit in this team and many of the boys gained further experience playing for our higher grade Mens teams. Congratulations to Matt Redenbach, Josh La Spina and Ross Bougoukas who played their first games of First Grade this year.

Our U15 Redbacks team were joint premiers in the Sydney-Wide U15 Metro competition. As the reigning premiers, they handled the pressure to make the grand final only to share this year's title with Ryde in a 1-all draw after extra time. We had 5 players join us from other clubs and the team melded into a tight unit that enjoyed the year both on and off the field. The U15 Strikers did

not match the Redback's success, but enjoyed a happy and social year together under the guidance of their coach Catherine Wark. Many of the team will stay together next year and Cath is looking forward to continuing to improve their hockey skills.

Our two U13 teams struggled with numbers this year which showed in the results. I often heard from coaches and parents "If only we had a full team with reserves, we would have matched or beaten that team!!" Despite this, everyone still turned up to train and play each week, so thanks to the players and parents for hanging in there. For the U13A Redbacks, the highlight was probably scoring one of only three goals that Sutherland had against them for the whole season. The U13 Strikers ended up having three coaches and 23 children play during the season, so it is a credit to you all that the team was still there at the end – well done!!

Both U11 teams made the Grand Final and we have some real talent coming through in this age group. Many players will still be in U11 next year, so maybe we can go one better??? I was constantly amazed by the enthusiasm of both players and parents at training and the games and this is so important for making a successful club. Development of hockey skills will be paramount as they move through the age groups so that the juniors continue to provide players for both our Mens and Womens senior teams in the future.

Our Minkey program under the guidance of Vernon Howe, Alison and Andrew Cheong continued to attract up to 40 children each Saturday morning down at Jubilee. Ages range from 3 to 9 years, and the program is centred on fun and involvement whilst learning basic skills. This is a great breeding ground for the stars of the future.

In concluding this report, there are many people that have made a contribution to the club during the year. I would like to thank the following:

- Our major Junior sponsor the Toxteth Hotel makes a sizeable monetary donation each year for Junior Development. Thank you Vonnie Dart.  
Our coaches & managers – a mixture of dedicated parents, senior members and players. You all make the club successful.  
Mick Bougoukas, then Patricia Doughty & Liz Fleming who ran the clubhouse. Also the band of parents who helped with the BBQ each week.  
Harry Wark – a club stalwart, again was there every Wednesday night to warm up the players and look after teams when coaches couldn't make it.  
Jenna Price & John Kavanagh – Our Junior Carnival Convenors. Did a fantastic job once again in the face of adversity!!  
Vernon Howe, Andrew Cheong, Alison Cheong, – went to extra efforts to run the minkey.  
Glebe Management Committee – Bob Taylor, Les Wark and the committee for their help during the season

Thanks to all the helpers.

In closing, I appeal to you all to assist wherever you can. Our club and hockey in general faces ever increasing competition from the likes of football and AFL. We can't match these sports in dollar terms, so it is up to us at club level to increase our numbers and improve the skills of the players. Please volunteer your services or consider how you can help if asked.

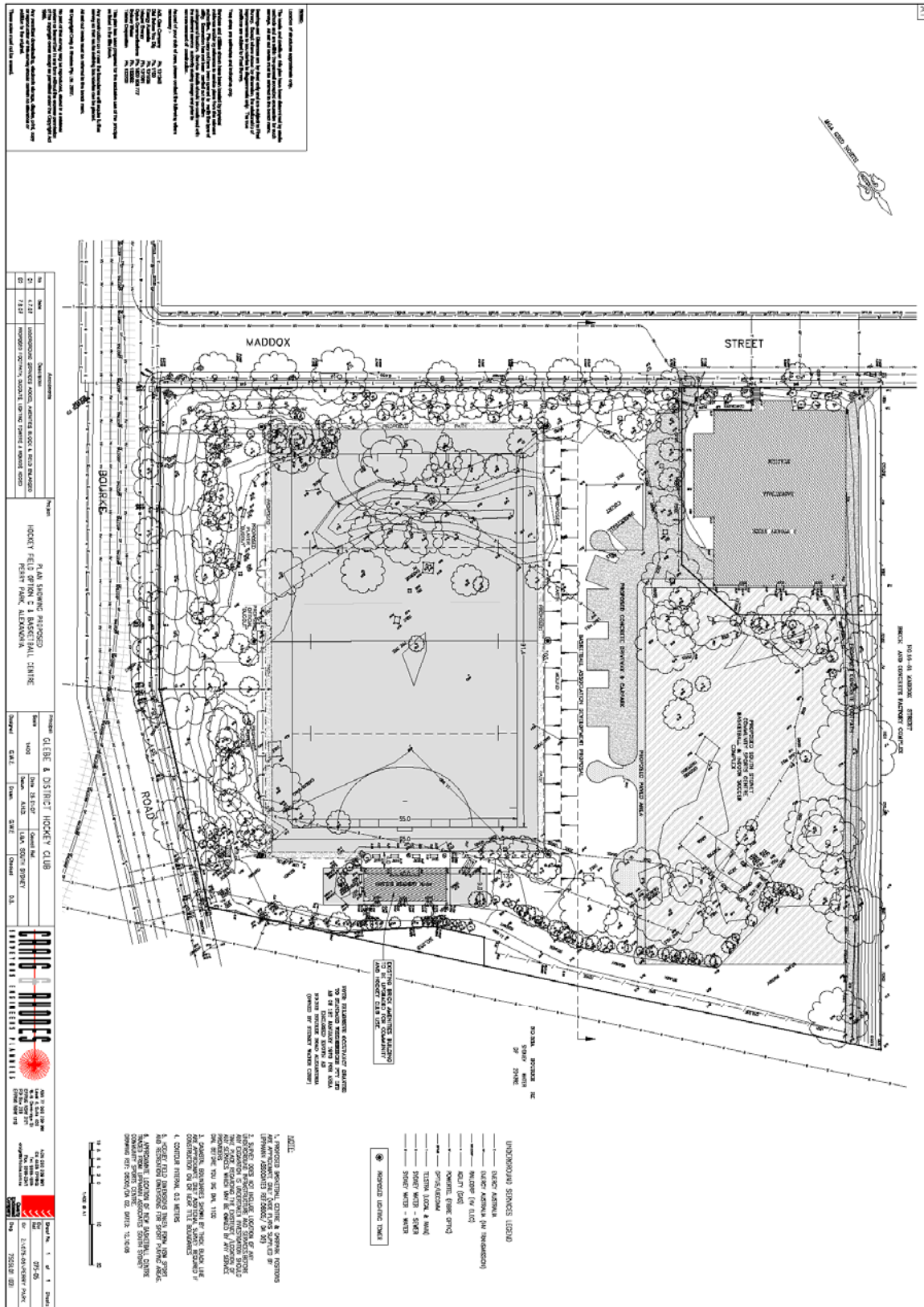
I look forward to seeing you all Under The Arches next year. Sign-on will be Wednesday 30 January 2008 (5:30pm - 7:00pm) and Sunday 3 February 2008 (9am - 11:00am). The season will start 5 April.

Mark Noller



Picture taken from the Albury Border News Paper where Glebe's 2 Men's teams at their Easter Hockey Carnival played off in the Final with Glebe Point Massive beating 2037 (Glebe's post Code) 4 –3 in the Final

# SYNTHETIC TURF COMMITTEE REPORT



### Proposed Field & Club House location

It has been a year of advancement in our quest of achieving our goal of having a turf built.

Discussions with the Sydney City Council indicated that our plight was being listened to and they were looking at a number of options within the Council area. The Council suggested Perry Park, Alexandra and a basic field survey design work was done to provide Council with a number of field location options within the area allocated. Perry Park is a small park on the corner of Maddox Street and Bourke Road Alexandra and is the home of the City of Sydney Basket Ball Stadium. During this time the Council produced a Recreation Needs Study blueprint for the whole Municipality and this recommended that an artificial turf hockey field be built at Perry Park, Alexandra.

One of the Council conditions was that for the field to precede it would like a joint venture between the GDHC and UTS hockey. Our Club Management held decisions and our President and Secretary meet with Officials from UTS. After the meeting both managements agreed that a joint working party be established to meet with Council.

A basic Memorandum of Understanding was agreed between both Clubs with the view of a formal arrangement being formalised in time. Basically the turf will be run by a joint committee of 5, consisting of 2 members each from GDHC and UTS and the 5<sup>th</sup> Member be nominated by Council.

Basically training times for UTS and Glebe would be between 3.30pm and 9.30pm, Monday to Thursday, between January and September inclusive. In Even Years (EY), Glebe would nominate its preferred training day and times first. Then, UTS would nominate its two training days and times, with the remaining day being allocated to Glebe. The order of nominations would be reversed in Odd Years (OY). During this period Glebe and UTS will alternatively nominate days for their own use. In EY, Glebe will have first pick. In OY, UTS will have first pick.

SHA would allocate nine of the eighteen Saturdays to each of UTS and Glebe to accommodate their own competition schedules. SHA would book time directly. SHA requires the field to be available for bookings between 12:30 and 9:30pm. Saturdays from 8am until 12:30pm will be hired out to junior or schools hockey associations. Booking preference for Saturday mornings will be given to junior teams fielded by UTS and Glebe.

Sundays will be made available for hire to Sydney's hockey associations, (first priority will be given to the women's hockey associations). The aim would be to encourage SWHL, SHA, and North Shore Women's etc Associations to use the time for competition games. Any time not hired by the associations will be made available to Glebe and UTS. The remaining field usage will become allocated time available to UTS or Glebe.

The Joint Glebe/ UTS Turf Working Party prepared a comprehensive submission, in conjunction with the Basketball Club who are also undertaking major redevelopment works, and presented it to Council.

From this presentation, Council Officials are now in the process of engaging consultants to prepare a Perry Park Master Plan that includes both the basketball and hockey developments. A draft Plan is expected to be finalised in early 2008 for public comment. With the completion of

the Master Plan Council Officers will submit a funding bid for inclusion in the Council's 2008/09 budget allocations.

Until Council completes the Perry Park Master Plan the Glebe part of the Turf Committee comprising of Craig Bagley, Rodney Hammett, Jim Oman and Les Wark will be having a quiet Christmas...

The Club would like to thank these members as these people are the quite achievers, the back room boys so to speak who are the driving force behind GDHC's dream of a Turf field.

The Club thanks you

Les Wark



Kate Pearsall on the move

## Social Organiser

2007 has been good year for the Glebe District Hockey Club with some new projects and enterprises undertaken by the club which have proven to be hugely successful. This being my first year on the committee it was a bit of a learning curve but one that I enjoyed and I hope to continue on as social officer next year.

I would like to take this opportunity to thank everyone who helped me throughout the year with organising events and helping set-up and run the events themselves.

First of all I would to thank my parents who were a big help throughout the year in all ways possible.

Secondly I would like to thank Andrew Goodrick, Mark Noller and all those who helped out in organising the Band Night down at the Clubhouse which proved to be a huge success and especially to Cristian Campano for organising all the bands to play at the clubhouse for free which hopefully will become a regular event throughout the years.

A big thankyou must also go out to Louise Tapsell and Amy Wark for the help in organising the Pub Crawl T-shirts and the night itself, I can not thank Louise enough for the work she put in to organising the Pub Crawl.

Also to Bob Taylor for his enormous help with the Presentation night this year and without his help it would have been a much more difficult job for myself and also a big thankyou to Helen Howe who was great help in liaising with the women's and helping throughout the year.

And at last but not least a big thanks to all those who helped throughout the year with little jobs on the night or day of events themselves and I am sorry if I missed out anyone but I thank everyone who has assisted me throughout the year.

As social officer this year it was great to see people getting back down to our traditional home under the arches and having some really big nights down there. I hope that next year this will continue and we can plan some really enjoyable nights at No. 3 Railway Arch Glebe especially since all the money spent down there goes to club, so if you are going to spend money somewhere at least spend it at the Clubhouse.

So I hope everyone has enjoyable off-season and comes back ready to play harder and stronger than the previous year and as always ready to party just as hard, because if there is one thing Glebe does better than playing hockey its celebrating.

Ian Paterson

# MEN CLUB CHAMPIONSHIPS

## Club Championship Points 2007

### Premier Grade

<u>Team</u>	<u>1st Grade</u>	<u>2nd Grade</u>	<u>TOTAL</u>
Moorebank-Liverpool	66	51	117
Glebe	69	45	114
Briars	50	62	112
Sutherland	26	60	86
Ryde Hunters Hill	42	39	81
UTS	31	50	81
Gordon North Sydney	47	24	71
NorWest Strikers	52	16	68
Bankstown	31	21	52
St George / Randwick	25	23	48
Sydney Uni	13	16	29
UNSW	0	29	29
South West Strikers	10	8	18

### 1<sup>st</sup> Division

<u>Team</u>	<u>1st Grade</u>	<u>2nd Grade</u>	<u>TOTAL</u>
Sutherland	47	35	82
Manly	47	28	75
Glebe	34	37	71
Ryde Hunters Hill	22	43	65
Moorebank-Liverpool	21	37	58
Easts	28	19	47
Briars	30	14	44
Gordon North Sydney	7	27	34
Norwest Strikers	8	5	13
Sydney Uni	9	4	13

## 2<sup>nd</sup> Division

<b>Team</b>	<b>1st Grade</b>	<b>2nd Grade</b>	<b>TOTAL</b>
UTS	40	36	76
Ryde Hunters Hill	33	39	72
St George / Randwick	30	35	65
Moorebank-Liverpool	37	14	51
Sutherland	30	19	49
Glebe	18	29	47
South West Strikers	23	22	45
Macquarie Uni	37	0	37
Briars	9	14	23
UNSW	0	0	0

## 4<sup>th</sup> Division

<b>Team</b>	<b>1st Grade</b>	<b>2nd Grade</b>	<b>TOTAL</b>
Monterey	38	34	72
Sutherland	24	40	64
Manly	19	21	40
Wests		33	33
Macquarie Uni		32	32
Briars	23	8	31
Glenorie	30		30
Ryde Hunters Hill	21	8	29
GNS Legal Eagles	25		25
Gordon North Sydney	13	11	24
Easts	21		21
Sydney Uni		19	19
Glebe		18	18
UNSW	10		10
Sharks	6		6
Norwest Strikers		6	6

## Team Points Tables

### Premier League 1st Grade

Team	GP	W	L	D	GF	GA	GD	Points
Glebe	24	23	1	0	159	38	121	69
Moorebank	24	22	2	0	141	43	98	66
NorWest Strikers	24	17	5	2	128	50	78	52
Briars	24	16	6	2	112	42	70	50
Gordon North Sydney	24	15	7	2	116	55	61	47
Ryde	24	14	10	0	128	75	53	42
UTS	24	10	13	1	132	91	41	31
Bankstown	24	10	13	1	126	119	7	31
Sutherland	24	8	14	2	82	66	16	26
St George Randwick	24	8	15	1	92	136	-44	25
Sydney University	24	4	19	1	72	122	-50	13
South West Strikers	24	3	20	1	45	163	-118	10
UNSW	24	0	24	0	3	336	-333	0

### Premier League 2nd Grade

Team	GP	W	L	D	GF	GA	GD	Points
Briars	24	19	0	5	102	27	75	62
Sutherland	24	19	2	3	113	31	82	60
Moorebank	24	15	3	6	100	50	50	51
UTS	24	15	4	5	95	29	66	50
Glebe	24	13	5	6	70	35	35	45
Ryde	24	12	9	3	55	57	-2	39
UNSW	24	8	11	5	50	75	-25	29
Gordon North Sydney	24	7	14	3	52	67	-15	24
St George Randwick	24	6	13	5	42	78	-36	23
Bankstown	24	7	17	0	51	115	-64	21
Sydney Uni	24	5	18	1	34	74	-40	16
NorWest Strikers	24	5	18	1	22	71	-49	16
South West Strikers	24	1	18	5	30	107	-77	8

### Division 1 - 1st Grade

Team	GP	W	L	D	GF	GA	GD	Points
Manly	18	15	1	2	77	30	47	47
Sutherland	18	15	1	2	73	16	57	47
Glebe	18	10	4	4	52	36	16	34
Briars	18	9	6	3	44	48	-4	30
Easts	18	8	6	4	47	41	6	28
Ryde	18	6	8	4	54	47	7	22
Moorebank	18	6	9	3	30	51	-21	21
Sydney Uni	17	2	12	3	13	60	-47	9
NorWest Strikers	18	2	14	2	26	52	-26	8
Gordon North Sydney	17	2	14	1	17	52	-35	7

## Division 1 - 2nd Grade

Team	GP	W	L	D	GF	GA	GD	Points
Ryde	18	14	3	1	58	23	35	43
Moorebank	18	11	3	4	43	22	21	37
Glebe	18	11	3	4	55	19	36	37
Sutherland	18	10	4	5	42	25	17	35
Gordon North Sydney	18	9	6	3	49	31	18	30
Manly	18	9	8	1	37	45	-8	28
Easts	18	5	9	4	22	46	-24	19
Briars	18	3	10	5	31	42	-11	14
NorWest Strikers	18	0	13	5	10	38	-28	5
Sydney Uni	18	0	14	4	16	72	-56	4

## Division 2 - 1st Grade

Team	GP	W	L	D	GF	GA	GD	Points
UTS	18	12	2	4	78	27	51	40
Macquarie University	18	11	3	4	61	33	28	37
Moorebank	18	12	5	1	71	59	12	37
Ryde	18	10	5	3	55	33	22	33
St George/ Randwick	18	9	6	3	53	37	16	30
Sutherland	18	9	6	3	63	48	15	30
South West Strikers	18	7	9	2	55	52	3	23
Glebe	18	5	10	3	29	39	-10	18
Briars	18	2	13	3	26	58	-32	9
UNSW	18	0	18	0	15	120	-105	0

## Division 2 - 2nd Grade

Team	GP	W	L	D	GF	GA	GD	Points
Ryde	16	13	3	0	53	21	32	39
UTS	16	11	2	3	44	19	25	36
St George/Randwick	16	11	3	2	48	22	26	35
Glebe	16	9	5	2	37	26	11	29
South West Strikers	16	7	8	1	36	37	-1	22
Sutherland	16	5	7	4	33	40	-7	19
Briars	16	4	10	2	37	37	0	14
Moorebank	16	4	10	2	34	66	-32	14
Macquarie University	0	0	0	0	0	0	0	0
UNSW	16	0	16	0	9	63	-54	0

## Division 4 - 2nd Grade

Team	GP	W	L	D	GF	GA	GD	Points
Sutherland	15	13	1	1	58	13	45	40
Monterey	15	11	3	1	38	21	17	34
West's	15	11	4	0	41	21	20	33
Macq Uni	14	10	2	2	66	18	48	32
Manly	14	6	5	3	40	29	11	21
Syd Uni	15	6	8	1	19	35	-16	19
Glebe	15	5	7	3	27	30	-3	18
GNS	14	3	9	2	25	47	-22	11
Ryde	14	2	10	2	27	54	-27	8
Briars	15	2	11	2	13	42	-29	8
NWS	14	1	10	3	15	59	-44	6

## U17 A Division

Team	GP	W	L	D	GF	GA	GD	Points
Glebe	15	13	2	0	60	15	45	39
GNS	15	7	4	4	36	22	14	28
NWS	15	6	7	2	27	31	-4	20
Ryde	15	6	7	2	28	35	-7	20
Moorebank	15	5	6	4	34	34	0	19
Sutherland	15	0	15	0	14	62	-48	0

## First Grade Men's Report



**Back Row (l-r)** Dean Benfield Mark Paterson Michael Wark Patrick Wark James Benson Ian Paterson Daniel Cleary Stephan Madycki John Nilan (Manager)

**Front Row (l-r)** Geoff Paterson (Coach) Aaron Oman Alister Cullen Adam Howard Darryn Booth Shane Nilan. Terren Manou

**Absent** Andrew Cheong Josh LaSpina Zac Farlow

It was a promising year for first grade, throughout the season the team played superably and with great authority and poise.

Winners of the Minor Premiership with the loss of one game.

Winners of the Yates Cup.

To have scored 165 goals for and 41 against reflects the level of dominance in attack and defence, the team possessed the ability to convert opportunities, all the main forwards scoring in double figures and the precision passing and support play of James Benson, Adam Howard and Alistair Cullen, Shane Nilan, Darryn Booth and Matt Wark initiated many attacking raids.

To play with such authority not so much because of the scoreboard but in general play and the ability to have a good tempo and intensity throughout our games enabled us to wear teams down, and to capitalise on this with our skills and team combinations, it was a disappointing end to an outstanding and consistent season.

Our run into the semi-final's was excellent, the last 6 rounds were all challenging games and our form was good, and although we had regular disruptions to the team, with injury or unavailability this turned out to be a positive as our replacements never let us down and would easily play 1<sup>st</sup> grade anywhere else.

Although this was to the detriment of 2<sup>nd</sup> grades season.

As an example, our last game before the semi, 1<sup>st</sup> grade had two out, with another sick before the game but managed to win comfortable against a side that could have troubled us. Another being GNS having three out on representative duties, one out injured and three more injured during the game was another hard fought win.

A word on the finals series.

Opposition strategies & tactics to counter our brilliant attacking abilities more than anything attributed to our two losses in the semi and final, and our inability to counter these strategies as a group, resulted in making scoring difficult. To score no more than two goals in either the semi or final, that was the telling knock out punch.

There were many highlights through the season. A number of young players who filled in early in the season showed a lot promise. Our juniors continue the tradition of talent coming through the club.

The depth of talent in the club is always on show with the likes of Stephan Madycki, Shane Nilan, Pat Wark, Zac Farlow, Andrew Cheong, and Pat Casey to the fore.

Games against some of our rivals which were memorable wins, where Briars in the first round which was probably defensively our best game of the season. The Yates Cup was another satisfying performance when one considers that two players were in a car accident that morning and wrote the car off, they were both among the best on field, as well as being Michael Wark's 21<sup>st</sup> birthday the night before so he was running a little late, so really there's no excuse if we win or lose it's the passion on the day. Our third encounter against Liverpool was in the second round again it was another comprehensive win by the team. Throughout the year the team's ball movement and passing combinations were enjoyable to watch.

I appreciate the total professionalism of the players who always turned up to play their best each week. Their celebration and jubilation as team in scoring a goal and after the game the camaraderie in the sheds as the team song was always sung with gusto which was always enjoyable. The consistent high level of skills; the attitude to continuing to look for improvement.

As Harry commented on presentation night they are full on out there and there is no quarter asked nor given.

As a couple of first grade award winners remarked on presentation night it's an honour to go out and play for this team.

When we look back on the season there has been many more positives than negatives and if we have enjoyed the time together than that's also success.

As for next year I am sure we have learned some lessons from this year.

Individual highlights

In recognition of a great year both Mark & Matt were amongst the top ten nominated by the umpires for the Brian Booth Medal and Ian was awarded the Rising Star award from Sydney Hockey.

Aaron Oman 7 goals incl hat trick v UNSW and 4&3 goals respectively v N.W.S. also 3rd highest goal scorer.

Mark Paterson – Highest goal scorer Hat trick v G.N.S

Michael Wark – 25 goals from 17 games, 2<sup>nd</sup> in goal scoring.

Dean Benfield – vs. Briars & N.W.S. 1<sup>ST</sup> rnd, kept us in the games, saved brilliantly on both occasions took a shot to the helmet full on against Briars.  
 Andrew Cheong – 5 goals v Syd. Uni 2<sup>nd</sup> rnd, included 4 in a row.  
 Darryn Booth – v Syd Uni, 1<sup>st</sup> round inside left 3 goals  
 Ross Bougoukas – 1<sup>st</sup> run on 1<sup>st</sup> goal v Syd Uni, 1<sup>st</sup> rnd  
 Ian Paterson – Hat Trick v S.W.S 2<sup>nd</sup> rnd  
 Josh LaSpina – 1<sup>st</sup> goal in 1<sup>st</sup> grade v Sutherland 2<sup>nd</sup> rnd  
 Daniel Cleary - Debut year in 1<sup>st</sup> gde, scored 2<sup>nd</sup> goal in final to get us back in the game .Was a great find for 1<sup>st</sup> grade.

Also thanks to John Nilan for his managerial duties again this year a real team player and for his detailed stats of which I was able to glean from.

Harry Wark Jnr for his assistance on game day a champion club man.

Thanks too many others, Rob McDonald, Danny O'Brien and Les Wark. Also a special thanks to Dean Morrow who assisted with Wednesday night fitness training.

23 players were used this year .The main team for the year was

Dean Benfield , Darryn Booth , Mathew Wark , Shane Nilan , Adam Howard , James Benson , Alister Cullen , Pat Wark , Michael Wark , Mark Paterson , Ian Paterson Aaron Oman , Daniel Cleary ,

Other squad members included Stephan Madycki, Nathan Dart, Ross Bouougkas, Anderson McDonald, Matt Redenback, Scott Howard, Adam Turnbull, Andrew Cheong, Zac Farlow, Pat Casey and Josh LaSpina.

Geoff Paterson



Adam Howard



Aaron Oman



Dean Benfield Great save Matthew Wark looks on



Michael Wark about to shoot



Darryn Booth on the move Matthew Wark in Background



Mark Paterson on the move, Daniel Cleary in support



Ian Paterson brought down, Daniel Cleary running to assist



Matthew Wark moving the ball into attack, Aaron Oman in Back ground

## Second Grade Report



**Back Row I-r** Steve Howard (Manager) Patrick Casey Paul Jowett Brad Goodridge Andrew Cheong Scott Howard Andrew Fox Rob McDonald (Coach)

**Front Row I-r** Anderson McDonald Matt Redenbach Adam Turnbull Stephen Mydecki Zac Farlow Ross Bougoukas Josh LaSpina

I thought I should read last years report before putting pen to paper. It detailed lots of hope and promise for 2007 to be built on a good year in 2006.

Based on this year's performance I fear that many didn't read or take seriously my comments about challenging for a 1<sup>st</sup> grade position with a commitment to train hard and improve. Unfortunately our results didn't live up to expectation and our commitment to the team, club and training let us down. I know that there are many distractions and forces outside hockey that take up our time but there seems to be an "all talk – not much effort" mentality in our second grade ranks. We could never train as a team all year because only the committed few would attend on a regular basis. Coupled with this was a lack of communication skills and planning in relation to availability on match day which found the club struggling to find 11 fresh players at times which

is a poor reflection on such a strong club. We had our fair share of injuries and player unavailability but at times it seemed this grade became a revolving door of players and left me rather bemused with some of the excuses for not playing. To all those involved remember you are selected to represent Glebe 2<sup>nd</sup> grade and as such have a responsibility to uphold.

We started the year off quite strongly and by mid year we were sitting comfortably in the top four and only just missing out on playing in the Yates Cup playoff. I was happy with the way the team was playing and knew that we could build up to the business end of the season. Our back 6 were doing well and the goals scored against us statistic was one of the lowest in the comp. Our finishing could have been better but we were getting the results.

The wheels fell off in the second round. The reason for this on the field is simple, we weren't scoring goals. We were still defending well but the ball wasn't finding the net often enough. In fact we were the best team in the competition between our defensive line and the attacking 25m line. The last 25m was a huge problem. This is where the most pressure is and our skills weren't up to the task. The pass must be firm and accurate, our traps must be excellent, our positioning must be clever, options must be provided by those off the ball and our shot selection must be smart and decisive. All this must also be done at high speed. These aspects can be practised and improved on at training if everyone wanted to improve.....

I can't say it is all the fault of the players on game day. We had a consistent back 6 all year and this was the basis for good defensive performances. However, the player revolving door came in the front 5 which made it VERY difficult to gel as players into a cohesive attacking unit. Also we had players backing up, playing more than one game a day, which is an unrealistic ask for them to play at their very best when exhausted. This often happened in the later stages of the year when other clubs had their best teams on the park. We were struggling to find players to play!!

To those that can't commit to play every round next season and train not only on Tuesdays but do your own fitness work, perhaps you need to look at why you are underachieving and rectify the situation.

Thanks to Steve Howard for his commitment this year and to those who helped the team out by playing more than one game when asked. Also, thanks to those few who did put in at training and regularly played throughout the year.

It was a sad end to such a promising season coming 5<sup>th</sup> which I believe was a huge underachievement. However, being realistic we probably didn't deserve better as we didn't work and commit anywhere near enough this year to the team as a team and for the team.

Rob McDonald

## Third Grade Report



**Back Row I-r** Peter Bush (Captain Coach) Martin Fong, Hugo Adrian Paul Jowett Sam Noller  
Andrew Fox Andrew Palmer George Manou (Manager)  
**Front Row I-r** Ross Bougoukas Teren Manou Dominic Kavanagh Alex Manou Adam Campano  
Scott Cleary  
**Absent** Gus Malfroy

The season was one of great promise for third grade. There were a number of positives to come out of the year and some areas for further thought and development. Third grade is and will continue to be a great grade in which to 'blood' younger players into the club culture and way of playing. Unfortunately the current format of the Sydney Hockey competition will serve to only drive younger players and the more social players away from the game. To isolate the grades in lots of two and to play at so many venues at so many and varied times make any type of commitment to the club difficult.

During this season thirty-nine different players played third grade. At no stage including the semi-final series did the same team play two weeks in a row. This made things interesting each

week for the team and caused Graeme and Danny many unnecessary headaches during the year. The job of the Club Captains grows more difficult each year and Graeme and Danny did an outstanding job in difficult times. Those of us who choose a team sport need to think more of their team and club mates because the number of last minute withdrawals this year did no one any credit.

After a rough patch during the middle of the year Third Grade finished the year strongly and was very unlucky not to be competing on Grand Final day, where we would have been very competitive. Third in the minor rounds and third in the major rounds was a good result all things considered, though not good enough in the end. Many of the younger players improved considerably and will be able to progress through the grades if they are able to apply themselves consistently each week and put the hard work in at training.

My thanks go to all the players for their efforts during the year. Third grade always played as a team and worked hard for each other. Many players doubled up each week but still gave their best for the team in the true Glebe spirit. Thanks also to Adam Campano and Paul Jowett for their leadership and contribution to the team each and every week especially when I was unavailable, their input was greatly valued. Congratulations to Andrew Fox as Player's Player, a very worthy winner.

Merry Christmas and a Happy New Year to all

Peter Busch



Alan Doughty



Michael Bougoukas takes up the challenge

## Fourth Grade Report



**Back Row** l-r Graeme Brown (Manager) Leo Kalisperis Greg Evans Sasha Solar-Marsh Jason McDonald Alex Sheard Alan Doughty

**Front Row** l-r Daniel Carey Hugo Adrian Tim Sutton (Captain) Michael Bougoukas Jake Riberovski Alan Mills Scott Cleary

**Absent** Ben Chivers Tom Holyoake

The 2007 year was a successful year for the team, with 4th grade being the Men's sole representative in the Grand Final. Unfortunately we finished as the runners up, though with a little bit more luck on the day, we could have been celebrating another flag.

There were many players used in 4th grade during the year. The turnover and frequent combinations meant that it was hard for the team to maintain momentum at the business end of the season. The unavailability of players (often due to late withdrawals in higher grades) at this time was very difficult to manage, and Brownny and DOB did a fantastic job to even get a team on the park at times (with many players having 2 games a week). It would be nice to see proper

commitment by all players in the club, as there are flow on effects to various teams, who have been let down by the (growing) minority.

Given this, there were some fantastic contributions by a core group of players, and it was heartening to see some great development during the year by the junior players in particular. These players will be the future of our club, and there are some good days ahead. Hopefully, as they replace players in the higher grades, the more experienced players will keep playing in the lower grades, for the enjoyment of hockey and to help teach and develop the stars of the future.

Thank you very much to all the players involved, as well as to the club's management and the many supporters of the club.

Looking forward to next year, and going one better.

Team: Tim Sutton, Jason McDonald, Alan Mills, Alan Doughty, Alex Sheard, Greg Evans, Scott Cleary, Sacha Solar-Marsh, Hugo Adrian, Daniel Carey, Mick Bougoukas, Ben Chivers, Donald Ball, Aleks Manou.

Tim Sutton



Glebe' Penalty Corner defence in Grand Final (Lost Ryde 2 nil)  
R →L Alan Doughty Michael Bougoukas (GK) Greg Evans Tim Sutton Ken Wark

## Fifth Grade Report



**Back Row I-r** Leo Kalisperis Sam Bagley Craig Bagley Les Wark (Captain) Kenneth Wark  
**Front Row I-r** Jack Stocker Tom Schlosser Oliver Holyoake Corry Morrow Jake Ribarovski  
Graham Brown

**Absent** Liam O'Donald Alex Dillon James Hurrell Lester Currie

The position we finished on the points table (8<sup>th</sup>) really did not reflect of how the team performed during the season. This team is playing against 3<sup>rd</sup> grade teams from other Clubs and is really a development or transition grade for young players coming out of the juniors and having their 1<sup>st</sup> year of senior hockey. The Team is a mixture of youth with a number of experienced players like Kenneth & Les Wark to help, guide and look after the junior players during the game.

The team was never convincingly beaten during the season and we were very unlucky not to have won or drawn a number of games against the top teams, were we conceded a goal or didn't convert our chances in front of goal in the last minutes of the game. Of the top 4 teams we drew or only loss by 1 goal in the second round of the competition.

I would like to thanks Kenneth Wark for making himself available for this grade, which leads me into a story when the team played UNSW at Little Bay, Kenneth playing Centre Half was directing the young players around him of where to run and what pass to throw. One of the junior players losses the ball and UNSW go into attack and we are in desperate defence. We look up and there is Kenneth explaining and demonstration to the younger player on the half way line what he could have done. The rest of the team understood and did their best to repel the attack, which they did successfully in this case.

This was the nature of the team, we did our best but we were there to nurture the younger players and I would like to thanks the older team members for accepting this role of the team.

The Team. Liam O'Donnell, Les Wark, Craig Bagley, Alex Dillon, Kenneth Wark, Leo Kalisperis,  
James Hurrell, Jake Ribarovski, Oliver Holyoake, Corry Morrow, Sam Bagley, Graeme Brown  
Lester Currie

Les Wark



Glebe's future 2007  
5<sup>th</sup> grade against UTS  
L-R Corry Morrow & Oliver Holyoake

## Sixth Grade Report



**Back Row** l-r Geoffery Hammett Adam Farrawell Sang Duong Bernard Adcock Andrew Goodrick John Cullen Rob Mutugumarana Amrat Parbhu  
**Front Row** l-r John McDonald Jack Stocker Michael Mosley Clint Dymond Aaron Aggarwal  
**Absent** Sam Bagley Steven Casey

This year the 6ths were not as successful as they have been for the last two years. Again Googa and Hammo in defence, with John Mac provided an excellent foundation for the team while Adam Farrawell worked a bit of magic up front. This took us through to the semis but we couldn't quite get the better of St George.

As with the previous years, comments were constructive and John Mac provided good feedback at half time. There wasn't much talking back to the umpires, which I think is good discipline on our part considering we were finding this season a lot more frustrating than last.

Looking to next year, it would be good if Lex returned, as Adam could use a bit more support up front, though I don't want to take anything away from Sang and Rob M, who put in great

individual performances (Sang got a hat-trick and then went on to score one for the 5ths, bagging 4 for the night).

Team: Jack Stocker, Andrew Goodrick, Geoff Hammett, Andrew Armour, John MacDonald, Amrit Parbhu, Stephan Casey, Mic Moseley, Bernard Adcock, Sang Duong, Adam Farrawell, Rob Mutugumarana, Clint Dymond and Sam Bagley often

Players Player: Jack Stocker.

Bernard Adcock



John Cullen 7<sup>th</sup> Grades Players Player in action, Michael Mosley in background

## Seventh Grade Report



**Back row** l-r Paul Flanagan, Glen Detering, Richard McKeogh, Andrew Sarnadski, Gareth Mair, David Prince, John Cullen, Peter Mitchell

**Middle row** l-r Milcho Klimoski, Sam Chrysos, Keith March, Arun Aggarwal, Steve McGill

**Front row** Terry Kelly

**Absent** Owen Bailey, Andrew Hammett, and Neil Kaye

After 15 rounds of the 2007 season we finished in 7<sup>th</sup> place. Winning 5 games, drawing 3 and losing 7 was not an indicator of how well the team performed. Our biggest losing margin was by 3 and our largest winning margin was by 4. Over all the team played and presented it self in true Glebe spirit. Through the season we had 19 players take to the field.

Terry Kelly our goal keeper played 14 matches and kept many teams out of the goals. In true goal keeper mentality he even stopped a stroke in the very last game. His enthusiasm and courage was a benefit to the team not to mention the experience the man possesses.

Our full backs mainly consisted of John Cullen and Keith March. These two guys truly played as one, penetrating into our goalmouth was a mammoth task for any opposition team. It's rather ironic that they both played with exactly the same style hockey stick which just for the record John purchased first. John Cullen was the one of two players not to miss any games through out the season.

The halves are the workhorses of the team. Peter Mitchell, Owen Bailey, Gareth Mair, Andrew Sarnadsky and Richard McKeogh are the main players to take up these positions. Dogged determination and true grit had these guys attack and defend through out the season. Their workload was of the highest standard and their enthusiasm spurred on the rest of us.

We now come to the glory boys of the team, the forwards; Paul Flanagan, Arun Aggarwal, Sam Chrysos, Steve McGill, Andrew Hammett, Neil Kaye, Glen Detering, David Prince and myself Milcho Klimoski. We scored 26 out of the 27 goals but this could not have happened if the rest of the team didn't perform. All goals scored where a team effort. Arun Aggarwal topped the goal scoring with 12 and assisted in many others. All goals where shared amongst 8 players.

Others who contributed to the hockey season where Amrat Parbhu and Tony Gadd. Thank you for your help this year.

Congratulations to John Cullen for winning the players player award. He deserved this award and it shows what a great player and team mate he is.

Our thanks go to Graham Brown who worked tirelessly for the lower grades.

In conclusion we had a well-balanced team. We enjoyed each others company and helped each other to achieve the best we could. We look forward to coming together for another season in which we can once gain take to the field as the Glebe Savage Sevens.

On a personal note I want to thank the club for allowing me to captain such a fine group of players and I invite all 2007 players to play in 2008. The team made my job easy and it was a great honour.

Team:

Terry Kelly, Keith March, John Cullen, Peter Mitchell, Owen Bailey, Andrew Sarnadsky, Paul Flanagan, Milcho Klimoski (captain), Arun Aggarwal, Sam Chrysos, Steve McGill, Andrew Hammett, Richard McKeogh, Neil Kaye, Glen Detering, Gareth Mair, David Prince, Amrat Parbhu and Tony Gadd.

Milcho Klimoski

## Veterans Report



**Back row:-** Peter Busch, Alan Doughty, Craig Bagley, Craig Martin, George Manou, Steven Casey, John Cullen.

**Front Row:-** Keith Marsh, Arun Aggarwal, Milcho Klimoski, Steve McGill, Mick Bougoukas, Amrat Pahbu.

**Absent** Geoff Roberts, Donald Ball, Garry Manou, Danny O'Brien, Les Wark., Wayne Maddern, Glen Dunn

What a year we have had. 2007 saw the Glebe Vets as reigning premiers but unlike last year we started with a loss. In true Glebe fashion, we rallied on to win a hell of a lot more than we lost. Our line up had change slightly from last year and we had a couple of old faces back in the maroon and white.

Glen "Dunny" Dunn came out of retirement and ran so hard the first game that he gave himself an injury the first night that he had to retire once again. Better luck next year Dunny. Another player that came back home was Craig "Toe Cutter" Martin. What was even better was that Craig's Father, Tony "The Fonzy" Martin, came out to watch the games. We now had barrackers on the sideline, some one to play for.

New faces are always welcomed to the Glebe family, especially if they bring new legs with them. Our new recruits were Arun Aggarwal, Wayne "Mad Dog" Maddern (formerly of Moorebank) and Alan Doughty (Briars).

We started with 20 players in our squad, but by the time we reached the end a few had to drop out because of injuries or other commitments. We lost Garry Manou during one of his comeback games as Goalie. A UTS stick to the wrist saw his season cut short. Typically of the Glebe boys, he finished the game, with a win, and then went to the hospital. Other players were "lost" at various stages during the year. Danny O'Brien had to withdraw midseason and Les Wark's injury at the start of the season and other commitments kept him away. Unfortunately, although fit and available for the semi, Les was denied permission to play.

The end of the season was very dramatic. With one round to play, the top 4 was not yet decided with 6 teams still in contention. A Glebe win saw us enter the Semis. Each of the 4 teams involved had beaten one another during the season, so we knew that the semi-finals would be a close tussle. Our opponents in the Semi were Sutherland, as it was this year. A close game ensued with Sutherland taking an early lead. The Glebe boys fought back strongly but time was against us and we went down narrowly by a goal. Sutherland went on to win the final for 2007. Although we did not get the chance to defend our title, the Glebe spirit was never diminished. We celebrated our season's achievement with a beverage or 2 and started to plan next year's onslaught.

In closing, I would like to thank all the players and all our supporters this year. There were many situations during the year when our players showed true Glebe spirit and camaraderie. It was a pleasure to play with such people. To Milch in his first year as a "Vet". Thank you for your help, from sending emails, to keeping us informed about the points table and filling out match cards. To Peter, Mick, Danny and Les for organising field positions and directing the team at half time. Your help was greatly appreciated. Fitter and faster next year we may not be, but we will be there, playing for the dirty red and white.

George Manou.

## Women's Convenor's Report

I would like to start by thanking each member of the women's committee for their hard work and dedication this year.

The 2007 committee was Raelene Lindeberg, Helen Howe, Sue Brady, Louise Tapsell, Kate Pearsall, Angela Phillips, Amy Smith, Carole Wark and Kylie Lawson. There simply would be no women's section of the club if it were not for the enormous amount of time and effort these girls put in each and every week.

This year was extremely tough and has forced the committee to reassess the direction of the women's club. Next year a development plan will be implemented, with a specific focus on junior development & retention.

Particular thanks goes to Raelene Lindeberg who had the massive job of organizing our top three grades this year as well as being one of the driving forces behind the changes for next year. Rae's passion for improving our club has given us amazing opportunities and I hope these ideas and plans are supported 100% by all members.

The results of the 2006 competition left the Glebe District Hockey Club's first grade women's team in an uncertain position. The Sydney Women's Hockey League committee agreed to extend the opportunity for Glebe to compete again in ML1 in 2007, rather than relegate them from the division. However, the same leniency would not be extended if the team did not improve its position in 2007.

Glebe Women had one task – To improve.

We were lucky enough to secure 2 top quality coaches in Colin Rochester and Ken Wark. This year the coaching and support from other club members has been fantastic. These coaches not only improved our position on the table but also established a renewed commitment and discipline in players. Our first grade team improved their ranking by two places and secured their position for the 2008 season.

Andrew "Googa" Goodrick was in charge of our lower grades and I would also like to thank him for his commitment and enthusiasm.

To everyone who supported the coaches this year, Danny O'Brien, Adam Campano and Dean Benfield we really appreciate your work and dedication to the women's club.

Also a special thank-you to our devoted managers, Ann Rochester, Raelene Lindeberg, Neal Lawson, Larissa Barton, Ann Wark and to our umpires Caroline Lake who volunteered to do our EDWHA school girl duties and Carole Wark who took over our SWHL umpiring when our nominated umpire pulled out. Your assistance is greatly appreciated.

On a personal level I would also like to thank Carole Wark. She has provided an enormous amount of support and guidance to not only me but the entire committee this year.

Congratulations to all our trophy winners, especially Raelene Lindeberg who won the Pat Nilan Trophy.

Finally, I am stepping down as convenor after two years in the position. I would like to convey my deep thanks to all the people within the club who have supported me and provided useful advice. I wish the incoming committee all the best for the 2008 season.

*Amy Wark*



HELEN HOWE DELIVERING THE PASS



Emily Smith getting the pass way



Catherine Wark  
The winner of the Dianne Gorman Medal  
NSW Junior Field Player of the Year

## Women's Captain's Report

It is with pride that I write this report on the Glebe Women's 1<sup>st</sup>, 2<sup>nd</sup> and 3<sup>rd</sup> grade teams for the 2007 season.

We started the season with the main goal being "Improvement". This I can proudly say was achieved in many areas. The Women's program was very lucky to have the coaching expertise of Colin Rochester for 1<sup>st</sup> grade and Ken Wark Jnr for 2<sup>nd</sup> Grade. I took on the role as player/coach for 3<sup>rd</sup> grade.

After near relegation last year the teams were under pressure to perform or face a situation that would force us out of the best competition available in NSW. From day one I could see a new found level of enthusiasm and dedication to their hockey and their team mates. Trainings were supported well in the top two grades and 3<sup>rd</sup> grade had a consistent turn up of 5 players who wanted to learn and improve their hockey.

With just 34 players over the three grades it was extremely difficult on a number of players who had to play two games each week. It became even more difficult when first grade players received injuries that would side line them for 6 weeks. Although this situation was frustrating for the team, the opportunity for lower grade players to play up and show themselves was a positive. The girls involved, grabbed the opportunity and played very well through out the season. This situation was cascaded through the three grades and I hope although at times it was extremely difficult and time consuming, you enjoyed the experience and learnt from it.

I watched a majority of games for all three grades and in that time saw the girls display great sportsmanship and they wore the Glebe uniform with pride. Their effort on the field could not be faulted and their "never give up" attitude was inspiring. Every game was tough and they fought to the end. The results do not do the effort displayed justice. The potential of this group is exciting and I hope the girls take the learning gained from this season into next season with a confident enthusiastic approach.

Without the help of many people who were willing to fill in at different stages through out the season and the commitment of Col and Ann, Ken and Neal the season would not have been as successful as it was.

I would like to thank the Coaches, Managers and Players for their support throughout the season.

2008 is going to be tougher, as we continue to step up a level each year, to ensure our goal for being able to compete in the best competition available to us, is secure.

I wish everyone and happy and safe off season and look forward to a successful 2008 season for the Club.

Thank you

Raelene Lindeberg

## Social Convenor's Report

This year the publicity role was combined with social responsibilities due to a lack of women committing to the Social Convenor Role.

The Publicity Officer role began by rejuvenating the website and making it up to date. This involved working on both the men and women's section of the website and working with people such as Adam Campano, Patrick Casey, Mark Paterson, Helen Howe, Ann Rochestor and Rae Lindeberg to update player profiles and have a match report on the top three grades every week.

Next year I hope to improve the match report section as the match reports written every week for the women were written by me and for the Men, every week written by mark Paterson for first grade and Adam Campano for Third Grade. Most of the information that went on the home page of the website was either publicising an upcoming event or putting up information that other people provided to me.

Writing the newsletter every month was a task that needs to be improved as information provided to me was only from a few select sources, so may not have given a true evaluation of the month for Glebe Hockey. The information was general enough, but the effort can be improved by creating relationships with people willing to provide information about different sections of the club

The most successful aspect of the Publicity role this year was obtaining media coverage in The Glebe Newspaper. The first article appeared on The Yates Cup and from that period up to the finals, Chris Jenkins (photographer) and I obtained 5 articles on the men and three articles on the women. Considering that we only began writing for the paper half way through the year I believe this was very well achieved. The majority of articles featured pictures and were very prominent within the sports section.

The social roles that were undertaken by myself were concentrated on assisting Ian in the organisation of The Pub Crawl. The Pub Crawl was a success as we had the best numbers yet and managed to raise money for the club through t-shirt sales. Publicising Social Events was done on the website as well as sending out emails to the entire club. Next year hopefully the women will have a social representative so that Ian is helped out as much as possible and I can stick to concentrating more on publishing the events. Next year I hope to work with Christian Campano when creating invites for the Band Night and widening our audiences.

Overall I believe that Publicity for Glebe Hockey was improved and now that I have had a year experience in the role I can aim for bigger things next year.

Louise Tapsell

# First Grade Metro Women's Report

Following a disappointing 2006 season, there was great expectation on the team to improve their performance, as well as their standing on the points table to ensure the Glebe Women's 1<sup>st</sup> grade team did not face the real possibility of being relegated from Sydney Women's Hockey League's premier competition.

Of course motivation by fear doesn't work and I'm pleased to say that the word relegation or talking about "coming last" were not part of the team's vocabulary. In fact the key theme which was central to our training, our preparation and game day was *Improvement*.

This year the team was very committed to improving and playing a style of hockey that was in the true Glebe spirit and tradition. And I must say the girls both at an individual and team level improved tremendously throughout the year and gave many teams a real fright with their determination and willingness to play strong and competitive hockey.

The theme *Improvement* was all about developing a team structure and shape so that every one not only understood their own and team mate's roles but also the importance of anticipating the second, third and fourth pass. For improvement to be achieved a great deal of emphasis was placed on the fundamentals; trapping, passing and tackling as well as the importance of fitness and pre match preparation. In all of these facets, I'm delighted to say the team improved and although a semi final birth was not achieved the team is only a season or two away from making this a reality.

In 2008, emphasis will be placed on the same approach with perhaps more work to be done on "circle craft", goal shooting and composure and set plays...especially penalty corners. It's probably fair to say that the addition of a couple of elite and experienced 1<sup>st</sup> grade players would also accelerate the team's development and perhaps this should be a priority in the off season.

So 2007 was a turning point for the team and a year where the platform for future achievement has certainly been built. I have every confidence with continued dedication and commitment from each 1<sup>st</sup> grader as well as a bit more belief in their own ability that 2008 will provide further improvement and success.

I want to take this opportunity to thank all the girls who played 1<sup>st</sup> grade this year for your hard work and also to congratulate you for the real improvement that you made. Also to our very few but very regular supporters who made an effort each and every week to support the team – your presence is extremely important and I hope you will all be cheering us all along next year. To Danny O'Brien who helped me out at training and on game days when I couldn't be available – thanks mate. To Ken Wark jnr the second grade coach who provided invaluable assistance at training. To Dean Benfield, Adam Campano, les Wark and Matty Wark who were always available to assist at training – thanks fellas.

To Raelene Lindeberg who worked tirelessly and so unselfishly – the contribution you made to our club and the girls was amazing. And to my wife Ann for being the team's Manager, lolly supplier and voice of experience and also to Ann Wark who filled in for Ann when we were away. And to Neil Lawson the 2<sup>nd</sup> grade manager who provided Ann and I fantastic support.

And finally to Catherine Wark for winning both the “Punjab” award as well as the “Players Player” Award....you had a busy season as well as a great one....Well done!

Again girls, congratulations on your commitment and improvement this year and now you know what's required to achieve at this level its up to you to lift the standard next year and make 2008 the season you want it to be!

Ann and I look forward to working with you, very confident that next season will be an even better year.

I take this opportunity to wish all members of the club a wonderful Christmas and a safe, healthy and happy 2008.

**Team.** Amy Smith, Andrea Lum, Catherine Wark, Clare Crosswaite, Elizabeth Wark, Helen Howe, Mary Wark, Niki Watters, Rebecca Howe, Tracy Bradshaw, Emily Smith, Angela Phillips, Kylie Lawson, Clare Stewart

*Colin Rochester*



CLARE STUART ABOUT TO SHOOT

## Second Grade Metro Women's Report

*"It doesn't matter how fit you are if you cannot trap and pass in the game of hockey, it won't matter how fast or far you run you won't win games".*

*Harry Wark Snr*

I would say my uncle was correct in his assessment of a hockey team that is either at the top or the bottom of the table.

One of my goals at the start of the season was to have Metro B (2<sup>nd</sup> grade) be able to put pressure on 1<sup>st</sup> grade, so as to lift their standard of play. Things didn't go the way I planned, first of all I found that our basic fundamentals were not up to the level of the grade we were playing in e.g.: Hitting the ball flat, trapping and positional play.

Another problem that we encountered was the turnover of players thru the team for one reason or another, which made it difficult to play a style of game in which players would learn to be at certain points of the field in relation to where the ball was.

**Having said that Metro B (2<sup>nd</sup> grade) never gave up.** There were times we got hammered in games, by not giving up and not playing, but trying to hard and not doing the role in which we were playing and leaving ourselves open at the back. Metro B(2<sup>nd</sup> grade) when I look back over the season our game came apart in the last 10-15 minutes of the second half, up till then we were competitive, so from that, handling pressure and mental toughness aspects of our game needs to improve. A lot of the time we made the same mistakes often two, three and even four times and didn't realize that we made them.

Everyone contributes to the success or failure, players need to keep thinking how can I help the ball carrier and what options do I have when I receive the ball. We need to have a plan for every step of the game.

If we can learn from this year and improve on having a better base of basic fundamentals you can reach the semi's but we have to take it one step at a time and then not to forget that step while achieving the next goal.

One of the main contributions that can be improved on is **communications** it can help to deny opposition having options if players talk to players in front or encouraging fellow team mates after they chased back after a mistake by you initially.

You see it is the little things that end up making the big picture. To many times we made passes that didn't need to be made when other simpler passes were there to give, because no one demanded the ball or gave advice to where the next pass was available.

I learnt a lot from coaching this year, there are things I would change in training drills and games thru to the comp games on the weekend. I hope that the players of Metro B( 2<sup>nd</sup> grade) enjoyed playing for Glebe with me as coach and that I have assisted you with aspects of improving your game so as to better yourself one grade up and beyond.

To the players who received awards for their contribution to this team. **Well done thoroughly deserve.**

Col Rochester and Danny O'Brien thank you for your assistance when I was not available and also your knowledge of the game from different points of view.

Neil Lawson many thanks go to you for being Metro B manager especially when Kylie moved up to 1<sup>st</sup> grade permanently, having all things that mattered on your side organized off the field which made my job easier in regards to looking after the teams performance on the field.

And finally Raelene Lindeberg no amount of words can express my sincere thanks on how you assisted me with training ,team selections, playing(filling in), watching other teams play, coaching and generally being their for the club when some one needed to stand up to make decisions. This club has benefited from your involvement and would be a waste not to learn from what you have done this year.

**Team.** Savannah Hoopmann, Josie Barron, Kate Pearsall, Krista Jenkins, Kristen Crawford O'Brien, Louise Tapsell, Alison Cheong, Janine Murray, Neille Farlow, Eliza Holyoake, Kate Gleeson.

Ken Wark



Goalie Josie Barron with Krista Jenkins



Kate Pearsall, Kristen Crawford-Obrien, Angela Phillips, Savanagh Hoopman

## Third Grade Metro Women's Report

This season we welcomed six new club players into 3<sup>rd</sup> Grade. They were Amy Bull, Lyndall Smart, Abigail Clarkson, Diana Thomas, Kylie Rourke and Grace Nagle.

The first 4 weeks the team showed great potential and working well as a unit considering the mix of new, young and experienced players.

As the season progressed situations arose where players became unavailable due to an extremely bad year for injuries in higher grades as well as sickness within the group. This became frustrating for those playing as we felt each week we were a new group and it was difficult to get the teamwork factor happening for us.

The positive to this was the opportunity for players to move up the ranks to fill in and we saw three of our girls play consistently in 2<sup>nd</sup> grade. We were also able to offer our 4<sup>th</sup> and 5<sup>th</sup> grade players a chance to show themselves in the Metro League along with Phoebe Kershaw from U15's Glebe Juniors an up and coming player of the future.

Although the team had difficult situations to work with, the players gave it their all and were not disgraced. The matches were quite even and it was just one goal or a draw that was the difference.

All of the players displayed great effort and Club pride and most importantly sportsmanship.

Thank you girls for the season and I hope to see you back playing in the Maroon and White next year.

Trophy Winners for 2007: Most Consistent - Abigail Clarkson,  
Best & Fairest- Kate Gleeson, Punjab Winner- Melissa O'Neil.

**Team.** Amy Bull, Amy Wark, Lyndall Jane Smart, Kylie Rourke, Raelene Lindeberg, Stephanie Black, Abigail Clarkson, Ellie Williams, Jemima Howe, Cy Lindeberg, Melissa O'Neil, Diana Thomas

Raelene Lindeberg



Kylie Rourke

*Andrea Lum*

## Lower Grades 4<sup>th</sup> and 5<sup>th</sup> Grade (ED ) Report

Both Eastern Districts sides have had an enjoyable season with players moving freely between the two sides. There were plenty of close games. There was a large contingent of new players to the club and more juniors are starting to come through our ranks and stay with hockey.

Teams were fielded in 3<sup>rd</sup> and 4<sup>th</sup> division with Andrew Goode – Googa - as the coach. Having a coach made a big difference to the desire to win. Having someone on the side line to get you focused before getting on to the field was something these teams did not have last year and I would like to take the opportunity to thank Googa for his commitment to both teams at training and the games. The main goal for next year is CONSISTENCY- more consistency in our game and more consistency in players turning up to play.

Both teams missed out on the semi finals with the 4<sup>th</sup> division team needing to win the last game of the season to make it. Unfortunately, we were hit very heavily with sickness and injury and the ability to field consistent teams became a struggle every week. A big thanks to Larissa Barton, our manager, for making sure we had enough players every week and the players who often played two games especially Sheridan, Dionne, Caroline, Sarah Sharples and Kaitlin. A special mention to Mel Newton, who not only traveled from Goulburn most weekends but was also the clubs top goal scorer.

#### Club awards

Div 3	Best and Fairest	Taryn Robinson
	Most Consistent	Sarah Sharples
	Pujab	Caroline Lake
Div 4	Best and Fairest	Sheridan Aylmer
	Most Consistent	Elizabeth Tran
	Pujab	Dionne Martin

Dionne also achieved her 100 games for Glebe.

All players enjoyed the season immensely and most will be returning for the 2008 season.

**4<sup>th</sup> Grade Team.** Sheridan Alymer, Angela Hare, Caroline Lake, Kaitlan Beare, Dione martin, Julie Newton, Melissa Newton, Thea Roberts, Danielle Robinson, Taryn Robinson, Sarah Sharples, Sarah Sutherland.

**5<sup>th</sup> Grade Team.** Sheridan Alymer, Alisha Doyle, Larrissa Barton, Eloise Fallon, Elizabeth Tran, Eden Bootney, Sue Brady, Emma Brady, Matilda Gillis, Grace Doughty, Robyn Ainsworth, Sue Evans, Madeline Smith.

Sue Brady

# Representative Players 2007

## Central Area Junior Hockey Association (CAJHA)

U/17	No trials (Sydney trials in Feb 2008)
U/15	Dominic Tintner
U/13	Edward Noller, Tim Fleming, Ethan Doughty, Harry Doughty
U/11	Mackenzie Noller, Clare Doughty

## Sydney North

U/18	
Women	Krista Jenkins

## Sydney Junior Hockey Association (SJHA)

U/17-1	Dominic Kavanagh, Aleks Manou, Ross Bougoukas, Scott Cleary, Matthew Redenbach
U/17-2	Sam Noller
U/17-3	Chris Holmes
U/15-1	Alex Sheard, Alasdair Brown, Nicholas Derewlany
U/15-2	William Noller, Corey Morrow, Jake Ribarovski (State Champions)
U/15-3	Dominic Tintner
U/13-3	Edward Noller, Tim Fleming, Ethan Doughty, Max McInnes
U/11-1	Mackenzie Noller, Corey Bolvaren
U/11-2	Emma Millington
U/15-1 Girls	Phoebe Kershaw, Ellora Thwaite

## Sydney Indoor Hockey Association (SIHA)

U/17	Nathan Dart, Teren Manou, Adam Turnbull, Aleks Manou, Ross Bougoukas, Alex Sheard, Corey Morrow, Matthew Redenbach
U/15	Ross Bougoukas, Aleks Manou, Alex Sheard, Corey Morrow, Jake Ribarovski, Dominic Tintner, Paris Litton-Strain
U/18	
Women	Krista Jenkins

## Eastern Districts Womens Hockey Association (EDWHA)

U/15	Emma Brady
U/18	Catherine Wark
	Stephanie Black
	Thea Roberts
Open	Catherine Wark

### NSW State Representation

U/16 Field All Schools	Aleks Manou, Ross Bougoukas, Scott Cleary, Andrew Palmer
U16 Indoor	Aleks Manou, Ross Bougoukas
NSW UNDER 18 WOMEN	Catherine Wark
NSW UNDER 18 MEN	Nathan Dart, Daniel Cleary, Anderson McDonald, Teran Manou
NSW UNDER 21 MEN	Ian Paterson, Alister Cullen, Michael Wark
NSW NHL MEN	Darryn Booth, Dean Benfield, Mark Paterson, Ian Paterson

### Australian Representation

Australian All Schools	Andrew Palmer
AUSTRALIA Under 20	Ian Paterson

# CLUB HONOURS 2007

## MEN

### Players' Player

1st Grade	Mark Paterson
2nd Grade	Scott Howard
3rd Grade	Andrew Fox
4th Grade	Alan Mills
5th Grade	Jake Ribarovski
6th Grade	Jack Stocker
7th Grade	John Cullen

### Club Milestones

500 Club Games	Michael Bougoukas
200 Club Games	Dean Benfield
100 Club Games	Alistair Cullen Craig Bagley Sang Duong Neil Kaye Scott Howard Ian Paterson

50 1st Grade Games    Ian Paterson

## WOMEN

### Best & Fairest

1st Grade	Catherine Wark
2nd Grade	Kate Pearsall/ Josie Barton
3rd Grade	Raelene Lindeberg/ Kate Gleeson
4th Grade	Taryn Robinson
5th Grade	Sheridan Alymer

### Club Milestones

200 Club Games	Helen Howe
100 Club Games	Angela Phillips Nikki Watters Catherine Wark Dionne Martin

# Club Trophies

---

*The Club has eight trophies that are competed for year by year.  
Trophy winners are selected by the Management Committee  
at the conclusion of each season*

## WOMENS MOST CONSISTENT INDIVIDUAL PERFORMANCE

*As adjudged by the coaches and committee.  
Players making consistent contributions by their play and general demeanour.*

1st Grade	Emily Smith
2nd Grade	Krista Jenkins
3rd Grade	Abigail Clarkson
4th Grade	Sarah Sharples
5th Grade	Elizabeth Tran

## W. J. TAYLOR CUP

*The trophy was first awarded in 1941. It was donated by W.J. Taylor, who at the time was the Club Patron. The award was originally for the "Most Improved Player", however, since 1954 the wording was altered to "The Club Member Who Has Set The Best Example by Consistent Play and General Demeanour".*

1941	Frank Murray	1970	Keith Vincent
1942	Not awarded	1971	Graeme Gilmour
1943	Jack Taylor	1972	Vic Westacott
1944	Not awarded	1973	Col Smith
1945	Leo Murdoch	1974	Pat Nilan
1946	Alan Cross	1975	Ian Mutton
1947	Bob Needham	1976	Greg Corben
1948	Jack Buckley	1977	Greg Corben
1949	Fred Needham	1978	Royce Jenkins
1950	Jack Martin	1979	Mike Buckley
1951	Vince Halls	1980	Geoff Paterson
1952	Jack Martin	1981	John "Todd" Smith
1953	Glen Elliott	1982	Les Wark
1954	Alex Robb	1983	Danny O'Brien
1955	Vern Turner	1984	Terry Reece
1956	Jack Taylor	1985	Bob Barrett
1957	Reg Matthews	1986	Colin Rochester
1958	Paul Rogers	1987	Tim Sutton
1959	Greg Harris	1988	Bevan Ineson
1960	Greg Harris	1989	R. "Ted" Edmondson
1961	Graeme Gilmour	1990	Tom Jenkins
1962	Ken Wark	1991	Bevan Ineson
1963	Pat Nilan	1992	Harry Wark
1964	Pat Nilan	1993	Stephen Casey
1965	Graeme Gilmour	1994	Michael Bougoukas
1966	Dave Stevens	1995	Martin Howe
1967	Ken Wark	1996	Brent Gilmour
1968	Martin Howe	1997	Amrat Parbhu
1969	Robert Brown	1998	Amrat Parbhu

1999 Kieran Diviney  
 2000 John McDonald  
 2001 Mike Bougakas  
 2002 Phil Winwood  
 2003 Steven Casey  
 2004 Graham Brown

2005 Tom Holyoake  
 2006 Tom Holyoake  
 2007 Craig Bagley

## A. J. OLDFIELD CUP

*The A. J. Oldfield Cup was also first awarded in 1941. The Cup was presented to the Club by the late A. J. (Burt) Oldfield, the former Australian Wicketkeeper.*

*The trophy is awarded to the "Colt Under 21 player "who has been adjudged, "The Most Improved and Best Behaved During The Season"*

1941 Jack Taylor  
 1942 Not awarded  
 1943 during  
 1944 War years  
 1945 John Richards  
 1946 John Collett  
 1947 Not awarded  
 1948 Don Campbell  
 1949 Allan Halls  
 1950 Bob Rodgers  
 1951 Ken Bolin  
 1952 Len Needham  
 1953 Ken Bolin  
 1954 Paul Rogers  
 1955 Paul Rogers  
 1956 Greg Harris  
 1957 Vic Westacott  
 1958 Pat Nilan  
 1959 Pat Nilan  
 1960 Bill Stubbs  
 1961 Pat Nilan  
 1962 Robert Brown  
 1963 Graham Kirkland  
 1964 Ross Croker  
 1965 Marvin Heaston  
 1966 Garry Manou  
 1967 Harry Wark jnr  
 1968 Graham Lisk  
 1969 Graham Lisk  
 1970 Royce Jenkins  
 1971 John McDonald  
 1972 Wayne Sullivan

1973 Les Wark  
 1974 Greg Corbin  
 1975 Geoff Paterson  
 1976 Robert Diviney  
 1977 Robert Diviney  
 1978 Ken Wark jnr  
 1979 Ken Wark jnr  
 1980 Ken Wark jnr  
 1981 Danny O'Brien  
 1982 Ken Wark jnr  
 1983 Craig Stubbs  
 1984 Ken Bennett  
 1985 David Rochester  
 1986 Michael Diviney  
 1987 Julian Dell  
 1988 Wayne Southwell  
 1989 David Annan  
 1990 Shane Nilan  
 1991 Stuart Corkery  
 1992 Glen Barnes  
 1993 Patrick McCann  
 1994 Brad Goodridge  
 1995 Alan Alderson  
 1996 Christian Campano  
 1997 Sam Everist  
 1998 Steve Sherwood  
 1999 Yuri Schimke  
 2000 Aaron Oman  
 2001 Aaron Nilan  
 2002 Adam Howard  
 2003 Michael Wark  
 2004 Brendan Booth

2005 Ian Paterson  
 2006 Michael Wark  
 2007 Ian Paterson

### **MICHAEL "ABBO" ATTERTON MEMORIAL TROPHY**

*Michael Atterton died tragically in early 1978; the Club awarded this Trophy in fond memory of him. In 1965, at the age of 6, "Abbo" commenced his hockey with the Club. Whilst still a junior, at the age of 14, he played his first senior games. He was considered to be, potentially, one of the most outstanding prospects in the Club. The Trophy was first awarded in 1978, for the "Player With the Most Potential".*

1980 Danny O'Brien	1995 Dean Benfield
1981 Warren Birmingham	1996 Dean Benfield
1982 Leo Kalisperos	1997 Aaron Oman
1983 David Rochester	1998 Aaron Oman
1984 Craig Martin	1999 Darryn Booth
1985 Michael Diviney	2000 Darryn Booth
1986 James Fitzgerald	2001 Darryn Booth
1987 James Fitzgerald	2002 Mark Paterson
1988 David Annan	2003 Mark Paterson
1989 Craig Greaves	2004 Ian Paterson
1990 Craig Greaves	2005 Matthew Wark
1991 Craig Greaves	2006 Alister Cullen
1992 Aaron Nilan	2007 Alister Cullen
1993 Aaron Nilan	
1994 Simon Booth	

### **HARRY WARK SNR TROPHY**

*This trophy is dedicated to the memory of Harry Wark Snr, Club Patron, Life Member who played a record 754 games for the Club, including 1st grade and the lower grades.*

*Harry was a passionate and committed member of the Club who supported the development of younger players and the enjoyment of the game amongst the lower grade players.*

*This trophy is awarded to a member in the lower division who participated with the same loyalty, enthusiasm and dedication to the true traditions of the Club.*

2003 Geoff Hammett  
 2004 Vernon Howe  
 2005 Andrew Goodridge  
 2006 Graeme Brown  
 2007 Tim Sutton

## **V. J. TURNER CUP**

*In their efforts to foster Junior Hockey in the Club, the Management Committee of 1950, decided to present a trophy for the “ Most Improved Junior Under the Age of 17 Years ”.*

*The Cup was named after Vern Turner in appreciation for his work for juniors.*

*Vern was an outstanding player and an equally outstanding Coach. He first started with the Club in 1942, playing Left Wing and soon went into 1st. Grade. He played 261 games and scored 84 goals. His ambition was to coach a winning Under 16's team.*

*This ambition was unfulfilled when he left the Club in 1957.*

*In the following 1958 Season, two teams which he had coached played out the Final.*

1950	Keith Riley	1980	Leo Kalisperos
1951	Bennett Dunn	1981	Leo Kalisperos
1952	Maurie Cownie	1982	Kieran Dell
1953	Eddy Kenny	1983	Craig Schubert
1954	Bill Stubbs	1984	Julian Dell
1955	John Whittle	1985	Shane Filewood
1956	Gary Sullivan	1986	James Fitzgerald
1957	Barry Angus	1987	Damien Galluzzo
1958	Brian Howe	1988	Brett Stubbs
1959	Graeme Gilmour	1989	Damien Galluzzo
1960	Dennis Lisk	1990	Aaron Nilan
1961	Harry Wark jnr	1991	Aaron Nilan
1962	Dennis Brown	1992	Adam Campano
1963	Colin Brown	1993	Adam Campano
1964	Not Awarded	1994	Christian Campano
1965	Not Awarded	1995	Aaron Oman
1966	Graham Lisk	1996	Wayne Benfield
1967	John McMahon	1997	Alex Crook
1968	Wayne Sullivan	1998	Pat Casey
1969	Michael Weatherly	1999	Pat Wark
1970	Wayne Sullivan	2000	Adam Howard
1971	Les Wark	2001	Mark Paterson
1972	Robert Diviney	2002	Matt Wark
1973	Robert Diviney	2003	Zach Farlow
1974	Robert Diviney	2004	Luke Freeman
1975	Tony Cowan	2005	Alistair Cullen
1976	Brian Bissakker	2006	Teren Manou
1977	Allen Chu	2007	Josh LaSpina
1978	Scott Brown		
1979	Peter Cremin		

## J. W. KENNY TROPHY

*This Trophy was first competed for in 1975. It was donated by Jim Kenny, Patron, Life Member and Foundation Member of the Club. The Committee decided it would take into consideration points allocated in the H A Brian Booth Medal Award. However, since 1980, in making the award, the winner was not necessarily the highest points scorer from the Club in the Brian Booth Medal list.*

1976	Ian Mutton	1993	Ken Wark jnr
1977	Robert Diviney	1994	Ken Wark Jr.
1978	Geoff Paterson	1995	Shane Nilan
1979	Greg Corben	1996	Pat McCann
1980	Graham Bell	1997	Shane Nilan
1981	Garry Manou	1998	Shane Nilan
1982	Warren Birmingham	1999	Aaron Nilan
1983	Ken Wark jnr	2000	Steve Sherwood
1984	Col Rochester	2001	Aaron Nilan
1985	Les Wark	2002	James Wright
1986	Robert Wark	2003	Aaron Oman
1987	Danny O' Brien	2004	Dean Benfield
1988	Peter Busch	2005	Darryn Booth
1989	Danny O'Brien	2006	Dean Benfield
1990	George Manou	2007	Mark Paterson
1991	Ken Wark jnr		
1992	Craig Stubbs		

## ROBERT DIVINEY MEMORIAL TROPHY

*This Trophy was donated by the Club in memory of Robert Diviney who died in 1982. He was hit by a car on his way home from hockey training at Jubilee Oval. The trophy is awarded to the Most Outstanding Club Player, Junior or Senior.*

1982	Warren Birmingham	1995	Warren Birmingham
1983	Ken Wark Junior	1996	Shane Nilan
1984	Craig Stubbs	1997	Ken Wark Junior
1985	Grant Martin	1998	Steve Sherwood
1986	David Rochester	1999	Aaron Nilan
1987	Ken Wark Junior	2000	James Wright
1988	Ken Wark Junior	2001	Aaron Nilan
1989	Ken Wark Junior	2002	Darryn Booth
1990	Craig Greaves	2003	Darryn Booth
1991	Ken Wark Junior	2004	Shane Nilan
1992	Ken Wark Junior	2005	Dean Benfield
1993	Craig Stubbs	2006	Mark Paterson
1994	Warren Birmingham	2007	Aaron Oman

## PAT NILAN TROPHY

*Pat Nilan, ex Triple Olympian, donated this Trophy to the Club. It is to be presented to the "Most Outstanding Club Member", Junior or Senior, for the year as adjudged by the Management Committee.*

1984	Graeme Gilmore	Eddy Crook
1985	Keith Paterson	Rodney Hammett
1986	Keith Paterson	Jim Oman
1987	Martin Howe	Marilynne Smith
1988	Gary Wark	Robert Taylor
1989	Eric "Chook" Frazer	David Trodden
1990	Col Rochester	Harry Wark Snr
1991	Harry Wark Jnr	Les Wark
1992	Jim Oman	2000 Glenn Dunn
1993	Maureen Paterson	2001 Bob Taylor
1994	Les Wark	2002 Michael Bougoukas
1995	Maureen Paterson	2003 Harry Wark
1996	Anne Wark	2004 Ron Cheong
1997	Margaret Howe	2005 John Nilan
1998	Jim Oman	2006 Geoff Paterson
		2007 Raelene Lindeberg
		2008
1999	The Artificial Turf Committee Harry Wark Jnr (Convenor)	

## Margaret Howe Encouragement Award

*Margaret Howe held many committee positions over the years. Hardworking and generous with her time, she was an organiser, supporter, selector, financier and general propagator of club spirit. An enthusiastic champion of Women's hockey at all levels, her contributions were felt from sixth to first grades. This trophy is awarded annually in her memory to a younger club member who has consistently provided the best example of club spirit in their contribution to the club, on and/or off the field. In conferring this award the club recognizes the achievements of the recipient and hopes to encourage their continued involvement.*

2005 Alison Cheong and Amy Smith  
2006 Nikki Watters and Elizabeth Wark  
2007 Catherine Wark

## Carole Wark Trophy for Most Outstanding Umpire

*Carole Wark began umpiring in 1981. Since that time she has achieved a number of notable milestones.*

*She was the first women's club member to achieve a State A badge and has umpired at the State and National Under 21 levels. She gained an Australian A badge in 1991 and her talent was recognized when she was awarded the NSWWhA umpire of the year in 1993. Carole continues to generously donate her time and make a significant contribution to the Club by both umpiring herself and assisting in the development of our umpires.*

*This trophy is awarded annually to the umpire who has helped out generously throughout the year through club commitments and/or representative duties. The winner should be an umpire who always strives to improve their knowledge and skills, and performs to their best each time they take the field.*

2005: Not Presented

2006: Michelle Hancock

2007 Caroline Lake

## Natalie White trophy for Most Outstanding Junior

*Natalie has contributed enormously to the development of junior players within the Women's Club.*

*During her time with the Club she has coached the first and third grade sides and exposed players of all ability to top level coaching. She established a youth development squad aimed at fostering junior talent within both the men's and women's Clubs and always showed a commitment to raising the standard of hockey.*

*This trophy is aimed at recognising Natalie's contribution to the Club and encouraging junior players to play to the best of their ability. It is awarded annually to the junior player (under 18 years of age) who has displayed the most potential throughout the year.*

2005: Catherine Wark

2006: Catherine Wark

2007 Elizabeth Wark

## MOLLY WARK TROPHY

*The Trophy was donated by Molly Wark, the first President of the Ladies' Division of the Hockey Club, who remained in office for over ten years. Molly was instrumental in initiating the formation of the Ladies' Club in 1997 and has been actively involved since then in affairs of the Club.*

*The Trophy is awarded annually to the Clubwoman who has contributed most to the Club both on and off the field and/or in administrative affairs.*

1985 Jackie McNichol  
1986 Anne Rochester  
1987 Carol Purdy  
1988 Lisa Williams  
1989 Jill Strachan  
1990 Elaine Trodden  
1991 Jane Goldsmith  
1992 Carole Wark  
1993 Margaret Howe  
1994 Michelle Minett  
1995 Anne Rochester  
1996 Carole Wark  
1997 Margaret Howe

1998 Margaret Howe  
1999 Natalie White  
2000 Margaret Howe  
2001 Natalie White  
2002 Moira Williams  
2003 Lisa Usher  
2004 Moira Williams  
2005 Moira Williams  
2006 Helen Howe  
2007 Louise Tapsell

# TOTAL GAMES PLAYED FOR GLEBE – MEN 2007

---

Les	WARK	781	Scott	BORTFIELD	114
Stephen	CASEY	719	Ian	PATERSON	112
Colin	ROCHESTER	565	Neil	KAYE	104
George	MANOU	542	Sang Thanh	DUONG	104
Peter	MITCHELL	531	Alister	CULLEN	103
Peter	BUSCH	504	Craig	BAGLEY	100
Alex	MCPHEE	503	Josh	LASPINA	94
Michael	BOUGOUKAS	501	Hugo	ADRIAN	91
Gary	MANOU	440	Owen	BAILEY	89
Kenneth	WARK	429	Greg	EVANS	88
Shane	NILAN	376	Ben	CHIVERS	85
Brad	GOODRIDGE	349	James	BENSON	81
Andrew	GOODRICK	322	Sam	BAGLEY	81
John	MCDONALD	319	Paul	JOWETT	79
Tim	SUTTON	308	Teren	MANOU	79
Adam	CAMPANO	299	Nathan	DART	78
Amrat	PARBHU	288	Ross	BOUGOUKAS	76
Kevin	CHIVERS	274	Sam	NOLLER	76
Aaron	OMAN	256	Adam	TURNBULL	75
Geoffrey	HAMMETT	255	Jason	MCDONALD	73
Patrick	WARK	251	Liam	ODONNELL	73
Milcho	KLIMOSKI	240	Paul	FLANAGAN	73
Dean	BENFIELD	221	Luke	FREEMAN	67
Graeme	BROWN	218	Gareth	MAIR	65
Christian	CAMPANO	212	Sascha	SOLAR-MARCH	60
Jason	GREAVES	196	Dominic	KAVANAGH	57
Patrick	CASEY	190	Richard	McKEOUGH	53
Terry	KELLY	189	Aleks	MANOU	52
Bernard	ADCOCK	188	Daniel	CLEARY	51
Adam	HOWARD	182	Anderson	McDONALD	47
Thomas	HOLYOAKE	173	Julian	HUMPHREY	44
Leo	KALISPERIS	170	Matthew	REDENBACH	42
Andrew	ARMOUR	167	Andrew	SARNADSKY	39
Darryn	BOOTH	166	Keith	MARCH	39
Michael	MOSELEY	155	Sam	CHRYCOS	38
Andrew	CHEONG	148	Stephen	McGILL	38
Matthew	WARK	148	John	CULLEN	37
Daniel	CAREY	147	Scott	CLEARY	32
Michael	WARK	146	Donald	BALL	30
Andrew	FOX	141	Alex	SHEARD	27
Mark	PATERSON	140	Allan	MILLS	27
Zach	FARLOW	139	Tom	SCHLOSSER	26
Adam	FARRAWELL	136	Alan	DOUGHTY	25
Stephan	MADYCKI	135	Glen	DETERING	25
Simon	WARK	134	Lester	CURRIE	23
Wayne	BENFIELD	129	Jack	STOCKER	22
Scott Steven	HOWARD	119	Oliver	HOLYOAKE	22

Martin	FONG	20	James	HURRELL	11
Corry	MORROW	18	Andrew	HAMMETT	10
Alex	DILLON	15	Andrew	PALMER	10
Jake	RIBAROVSKI	15	David	PRINCE	7
Rob	MUTUGUMARANA	15			
GUS	MALFROY	14			
Alistair	SMYTH	13			
Arun	AGGARWAL	13			
Clint	DYMOND	11			

*We try to keep the records as accurate as possible.  
If there are any discrepancies,  
please let the Management Committee know*

## GAMES PLAYED FOR GLEBE – WOMEN 2007

---

Helen	HOWE	300	Sarah	SUTHERLAND	24
Kylie	LAWSON	260	Angela	HARE	24
Melissa	NEWTON	257	Krista Alex	Jenkins	22
Mary	WARK	222	Amy	Bull	22
Rebecca	HOWE	195	Sue	EVANS	18
Raelene	LINDEBERG	191	Janine	Murray	17
Amy	WARK	187	Cy Louise	Lindeberg	17
Robyn	AINSWORTH	183	Jemima	HOWE	17
Kate	PEARSALL	134	Sheridan	Alymer	17
Louise	TAPSELL	132	Emily	Smith	16
Clare	STEWART	130	Thea	ROBERTS	16
Andrea	LUM	119	Lyndall Jane	Smart	15
Catherine	WARK	111	Sue	BRADY	15
Angela	PHILLIPS	102	Tracey	Bradford	14
Julie	NEWTON	102	Savannah	Hoopman	13
Niki	WATTERS	94	Emma	Brady	13
Dionne	MARTIN	88	Elizabeth	Tran	
Kate	GLEESON	88	Sarah	Sharples	
Eliza	HOLYOAKE	79	Kylie	Rourke	
Elizabeth	WARK	70	Danielle	Robinson	
Amy	SMITH	70	Taryn	Robinson	
Josie	BARRON	63	Jane	Robertson	
Alison	CHEONG	53	Grace	Nagle	
Neille	FARLOW	48	Matilda	Gillis	
Melissa	ONEILL	47	Eloise	Fallon	
Kristen	CRAWFORD OBRIEN	34	Alisha	Doyle	
Caroline	LAKE	31	Sarah	CHUBB	
Clare	CROSSWAITE	28	Eden	Bootney	
Stephanie	BLACK	27	Larissa Jane	Barton	
Kaitlin	BEARE	25			

We try to keep the records as accurate as possible.

There was a few issues getting the Eastern Districts Match Cards. This is trying to be rectified

If there are any discrepancies, please let Helen Howe know

# **THE GLEBE DISTRICT HOCKEY CLUB**

## **WISH TO THANK THE FOLLOWING**

### **2007 SPONSORS**

**Toxteth Hotel**

**Galuzzos Fruit and Vegetables**