

James Keith Paterson

Born on 8th of March 1923 Died 1991

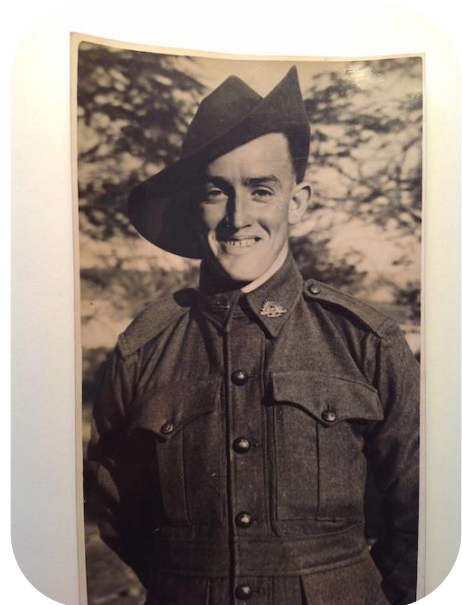
Elected Life Member in 1989



Keith Paterson – since transferring his allegiance to Glebe from Cumberland, seems to have spent every waking moment making sure that Glebe is the number one Hockey Club in Australia. Keith has spent hundreds of hours trying to secure a Synthetic Surface for Glebe and it will be due to Keith's persistence, that this goal will one day be realised. (Danny O'Brien Club Secretary Report 1990).

James Keith Paterson was born on the 8th of March 1923 to James Paterson and Eleanor Paterson (nee Gordon) at Auburn Private Hospital. As James and his father also went by the same name, James took the name of Keith Paterson so as to limit confusion amongst father and son. Keith also had a Brother Joseph and two step siblings in Alma and Gordon. Unfortunately, Elma died giving birth to her second child.

Keith was educated at Parramatta intermediate School which at the time was a primary and secondary college. Upon leaving school Keith worked for Woolworths working his way up through the chain of command to eventually reach the position of manager. Keith later worked as supervisor in the AWA (Amalgamated Wireless Australasia) tower which during the 30's, 40's, 50's and 60's was one of the most notable commercial buildings in Sydney. The building is located in the Sydney CBD at 45-47 York Street close to Wynyard Park and Wynyard Railway Station. Keith predominately worked at the Factory located at Ashfield/Croydon and it was during this time there he over saw the manufacturing of radio switches.



Keith Paterson in uniform 1941

It was also to be the place where he met a young lady by the name of Jean Sewell Barlow. However, their relationship was put on hold as in 1941 Keith joined the Australian Defence Force and was

Glebe District Hockey Club Life Member – Keith Paterson



sent to Darwin where he saw live battle and was involved in the Bombing of Darwin which occurred on the 19th of February 1942.

During this bombing 242 Japanese Aircraft bombed Australian Navy Vessels and landing strips to prevent Allied forces from using Darwin as a base during World War II. Keith returned to Sydney soon after where he married Jean at Auburn Baptist Church in front of family friends.

Not long after marrying in 1943 Keith and Jean had their first child, a daughter by the name of Janice (1944). During 1944 Keith was re-assigned to the Air Force where he was trained and held the position of tail gunner for many years flying out of the Richmond Air Base. Also During this time Keith and Jean welcomed their second child a son by the name of Kenneth (1945). He later became an instructor with the Air Force training new recruits. At this time the Defense force afforded Keith a block of land in Londonderry which is approximately 60 Kilometres west of Sydney. There they built a basic house and the Paterson's lived on their own self-sustaining farm.

Whilst with the Air Force Keith undertook a carpenters and construction trade certificate and after Keith had finished his service with the Australian Air force he obtained a job with the Department of works. This new appointment saw Keith and his young family, son Geoff (54) and Daughter Karen (64) relocate to New Guinea where they lived for three years traveling all over the little Island. New Guinea is located in the Southwest Pacific Ocean and lies to the North of Australia's top end, Gulf of Carpentaria & Cape York Peninsula's.

Keith oversaw the construction of new army buildings and also the construction private office and public housing facilities. After Keith's appointment in New Guinea he returned to Sydney where they decided to buy a unit in the Inner – west Suburb of Ashfield. Keith was still employed by the public works department and held various managerial positions overseeing the construction of such buildings as the Reserve Bank building in Martin Place, the Telephone Exchange in Pitt Street, and various shopping centres in Neutral Bay and Emu plains.

Keith's love of Hockey started whilst he was an adolescent at school, he spent the entirety of his playing days playing for the Cumberland Hockey Club where he played first grade hockey for a number of years. By all accounts he was quick on the field with a powerful hit. Keith was an above average player who was tough and mastered the left wing position. He played first grade for a number of seasons but enjoyed the social aspect of the sport more so. He transferred his love of the game on to his youngest son Geoff who also played through the juniors and seniors in Cumberland before joining the Glebe District Hockey Club in 1974.

Keith first came to Glebe in 1974 when his son Geoff switched from the Cumberland Hockey Club to the Glebe District Hockey Club. Geoff, along with lifelong friend Keith Pritchard were enticed to



Keith & Jean Paterson

Glebe District Hockey Club Life Member – Keith Paterson



the Club by long time Glebe stalwart Graeme Gilmore who was there NSW Colts coach at the time. Right from the outset Keith took an interest in club affairs becoming actively involved in the managerial side of the club, organising playing grounds and becoming closely associated with the synthetic turf proposal and other behind the scenes organisational work. President Robert Wark wrote in his 1991 Annual club address that "Keith Paterson, was a man who worked tirelessly for this club and instilled a sense of professionalism at management level, or should I say polished the rough edges (also a great coach)". He was club secretary from 1984 – 1986 and Club Vice – President from 1989 – 1990 when Keith became too ill to serve on the Committee.



Keith Paterson: front row on the left playing for Cumberland Hockey Club - Later to become the Parramatta Hockey Club.

Keith was one of the first Glebe club members to see the need for a synthetic surface in the Glebe District area. During 1987 Keith Paterson had discussions with Leichhardt Council about siting a synthetic hockey field at the Hockey Club's home ground, Federal Park Annandale. The Hockey Club had first used Federal Park for hockey in 1964. Keith lodged a DA for a synthetic hockey field at Federal Park, with Leichhardt Council in November 1987. Gary Wark wrote in his 1989 Secretary Report; "Special thanks must go to Mr. Keith Paterson, in regards to our synthetic surface, which we are trying to get. Keith spends a lot of his own time on this project – corresponding, talking with various people, liaising with the Leichhardt Council, so that we can get our synthetic Hockey Surface on the ground. Together with this work and his work with the Sydney Hockey Association, Keith indeed is a very good man to have in our club".

Due to Keith's devotion to both the Glebe Hockey Club and the Sydney Hockey Association he was awarded life membership after his passing in 1991 at the age of 68. The Sydney Hockey Association dedicated a medal in Keith's Honor which has been given out every year since 1992 to the Best and Fairest Player of the Sydney Hockey League First Grade Grand Final.

Keith passed away peacefully in his apartment at Ashfield in 1991 and was cremated at Rookwood cemetery.

Keith, in all things, if he thought he was right, would fight all the way for his point. However, if he lost, he would bear no grudge and when the debate was over would join in the round of drinks.

For his services to Hockey Keith was made a life member of the Parramatta Hockey Club, the Glebe District Hockey Club and the Sydney Hockey Association. He was fixtures secretary from 1972 till his passing in 1991.

Keith has instilled a level of professionalism in the managerial side of the Glebe District Hockey Club and brought to the club's attention the need for its own Synthetic Hockey Surface. It is the clubs hope that one day this goal will be realised. Keith's contribution to the club and the game is appreciated by us all.

Glebe District Hockey Club Life Member – Keith Paterson





The Sydney Hockey Association – Keith Paterson Medal.
Awarded annually to the Best and Fairest Player of the Sydney Hockey League First Grade Grand Final.



Keith in the backyard at his son's Geoff house

