

# GDHC Newsletter

**Red Rag  
June 2024**



**Glebe  
District  
Hockey  
Club Inc.**

# Message from our President

Dear Life Members, Players and Families,

**A big thank you to all contributors to the first edition of the Red Rag for 2024.** It's a good read with content that spans our entire Club, graciously pulled together by our talented Communications Director, Carolyn Pitt. Thank you, Carolyn.

I continue to be energised by an ever-present sense of community in our great Club. I see it growing strong amongst our Junior parents, with a special mention to our Wednesday Jubilee Oval / Federal Turf families. They have the added benefit of regular Clubhouse access and the very popular sausage sizzle that feeds kids and parents alike. A recent 'home-made burger night' was a huge success that extended into our annual State of Origin Night at the Clubhouse.

The value of community and our contribution towards strengthening it must never be underestimated.

Most Clubs can administer the game of hockey or whatever their chosen sport. Building and maintaining community however takes great care, thought and energy.

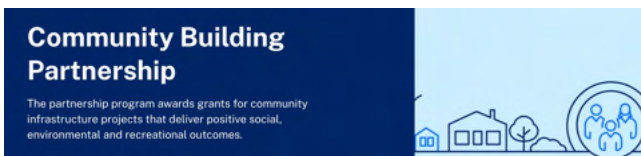
It's wanting to do a little bit more for your Club that can and will make all the difference.



*Cam, Victor, Andrew from our Men's ranks supporting Juniors Saturday at Jubilee by manning the the BBQ*

Take a moment to reflect on our night of nights, The Arthur Stubbs Foundation Fundraiser. A massive effort of pure people power that generated significant funds, and most importantly demonstrated our strength of community. You can read about this on the following page.

Or a recent financial grant opportunity through a NSW Government program, titled *Community Building Partnerships*. Our application championed by Mark Paterson was announced last week as successful. With a focus on further investment towards our Clubhouse, this financial grant will benefit all members. Let's be clear, these grants are hard to crack, but with the right mindset and the desire to do a little bit more, we can achieve what at times feels like the impossible.



From Saturday morning Junior BBQs to senior men and women coaching teams across our Club. From members running around town promoting and advocating GDHC for raffle or auction donations or last-minute umpiring stand ins. It's wanting to do a little bit more for your Club that can and will make all the difference.

Of that I am certain.

Take care,  
Sue

**Sue Heath**  
GDHC President



A handwritten signature in blue ink that reads 'Sue'.

## UPCOMING DATES

w.e. 23-23 JUNE – Pride Round

SAT 27 JULY – Pub crawl (18+)

THU 1 AUG – Juniors Olympics Social: Kookaburras vs NZ, Clubhouse

w.e. 10-11 AUG – Sydney Uni Derby weekend

SUN 1 SEPT – Juniors Carnival (Minkey-U14), Jubilee

WED 25 SEPT – Juniors Presentation Evening

SAT 28 SEPT – Senior Presentation Night

*See you  
there!*

# Arthur Stubbs Foundation Evening

## Our hero community event and yearly fundraiser

Wednesday 12 June saw Jubilee Oval and the Clubhouse come alive as we held our annual Arthur Stubbs Foundation Evening.

While attendee numbers were a little down on previous years – not helped by numerous illnesses going round, and a last-minute light rail strike – the evening was a great success with plenty of Club spirit as everyone gathered and enjoyed the food and drinks, auctions, and raffles.

On the Oval, the Juniors kicked proceedings off with their Wednesday training, before the big kids took to the field for The Champions Trophy, pitting the Young Guns against the Old Stars (aka, as they prefer to be called, the Legends).

Now in its third year, previous editions had gone the way of the Young Guns, but the tables were turned in 2024 as the Legend prevailed 3-1.

There were some excellent skills – and some more dubious ones – on display, and special mention has to go to fan-fave Rupert Hughes for delighting the audience with his giraffe onesie, and to the Little Legends whose presence off the bench brought the Old Stars average age down by a good decade.

We were also delighted to be joined by Kobi Shetty MP, who proved she is an asset on the field as well as in the community.



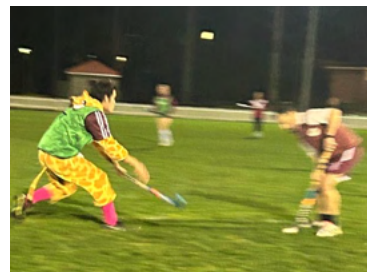
But of course, the driving focus of the event is to raise funds for the Arthur Stubbs Foundation, to continue to support the activities we do and opportunities we provide as a Club, particularly for our younger players.

This year, the fundraising target was set to \$10k – which was reached on the night, through the generous support of everyone who bought raffle tickets, placed winning bids on the Silent auction, and partook in the food and drinks on offer.

None of this would have been able to happen without the mighty efforts of volunteers – from individuals and businesses who provided auction and raffle items, to those who put their hands up to help on the night – through manning the food stations, to ensuring the lighting and sounds was set up (thanks Gareth!), and especially to Lisa Bonhote who lead the massive task of sourcing auction and raffle items and Sue Heath who managed all the logistics.



*Life Member (and magnificent goalkeeper) George Manou accepting The Champions Trophy on behalf of the Legends*



*Giraffe on the loose*



*2024 Legends: Monica Bordignon, Jamie Travis, Ross Bougoukas, Mel Newton, Aaron Oman, Josh La Spina, Adam Campano, Mark Paterson, Aleks (Mouse) Manou, Carolyn Pitt, Patrick Wark, Tony Wark, Nicolas D'onofrio, Emily Williams, GK George Manou  
Special Guest: Kobi Shetty MP, and the Little Legends*

*2024 Young Guns: Hannah Yeo, Liam Crowhurst, Rupert Hughes, Ed Noller, Dylan Howe, Cate Heath, Orlando Travis, Ayisha Travis, Abbie Sen, Henry Hunt, Aiden Nazjdion, Lydia Nazjdion, Siala Cochrane, GK Clark Foster, GK Jess Kennedy*

*Umpires: Peter Bestel and Andy Bestel*

# Player milestones

## Seniors

600



**Adam Campano**

600 Senior club games

300



**Paul Jowett**

300 Senior club games

300



**Dominic Tintner**

300 Senior club games

200



**Monica Bordignon**

200 Senior club games

200



**Jessica Higgs**

200 Senior club games

200



**Grant Martin**

200 Senior club games

200



**Mackenzie Noller**

200 Senior club games

100



**Jacob Warnock**

100 Senior club games

50



**Jessica Kennedy**

50 Senior club games

## Juniors

100



**Emerson Bonhote**

100 Junior club games

100



**Lilli Seebacher**

100 Junior club games



# Glebe Juniors

## **The 2024 playing year has kicked off really well for Glebe Juniors.**

This year brought significant changes to Glebe Juniors including new uniforms and a long-anticipated turf, but also a shift from odd to even year age-levels across NSW. 3 big changes at once!

We now field teams in U8, U10, U12, U14, U16 & U18 age divisions, departing from the traditional U9, U11, U13, U15, U17 structure of prior years. Despite the late implementation in early 2024 of this change by our playing Associations, resulting in players having to shift their expectations of which age-level they would be playing in, in the end all has been relatively smooth.

A lot of communication has ensued across various platforms including through our 2023 managers holding over and thank you to all parents for your support with these adjustments.

One notable outcome of this age-level adjustment is the emergence of a strong new U10 SEHA competition, with three Glebe teams participating in the U10 SEHA competition on half field. Glebe is by far the strongest Club in our Association in this age-level, something we are proud of but we also hope to see other Clubs growing at this level. There is some hope of that as the U10 division contains teams from most Clubs, not necessarily the case in other divisions in recent years.

Additionally, the first time, Glebe seized an opportunity to accommodate a second team in the U16 Metro competition. We did this as we have a really strong U16 age-level and no players aged out of this age-level at the end of 2023 (due to move from U15 to U16). We therefore wanted to create opportunity for those who would have otherwise been playing Metro if U15 had continued, to do so. This is likely a one-off for the Club. However we believe the opportunity play at this higher level for 2 teams will benefit all players involved as well as our Club in the future. Ken Wark is doing a wonderful job of fostering growth at this higher playing level as coach of our new Metro Team, the U16 Glebe Fire.

Below is a photo of a Metro Glebe Redbacks v Glebe Fire game. Both teams performed admirably and we were very proud of all of our players across both teams for their growth this year.



# Glebe Juniors

Another positive change this year is Crescent Turf which became available in April for both training and games, allowing our U10 and 12B teams to play at home on both Jubilee Grass and Crescent Turf, while other teams train at the Crescent. This expansion of facilities means we can continue to grow in our local Glebe area but also give our Juniors more access to Turf time.



Notably, all of our Juniors coaches this year are Glebe Seniors players or highly experienced retired Glebe players. This has been amazing for the Juniors players. Thank you to all our amazing Juniors coaches for their time and input. This is where the heart of our Club lies and they are inspiring this heart in the next generation too, a key aspect to securing our Club for the future.

Whilst the Juniors Club has so many wonderful volunteers, I also wish to call out Peter Bestel, our amazing Juniors Umpires Coordinator. With more Metro teams, this means more games to umpire on a Friday. Peter has been stretching himself in all sorts of ways to make this happen and without his efforts, we would be struggling. Thank you Peter for going well beyond expectations and above and beyond.

Club President, Sue, has also been doing an amazing Job in managing the Clubhouse and making it open for BBQs for most Wednesday trainings and Saturday games with her new team of Clubhouse Managers (usually older Juniors themselves). This is important in building community and we encourage everyone to buy and come to these BBQs after their sessions.

**Tara Taylor**  
Junior's Director



## What does the turf mean to you?

*From our kids*



**Teo, Minkey:**

*"It was easy to play with the ball"*

**Cooper, U12 Hornets:**

*"The turf is just cool!"*



**Caleb, U12 Hornets:**

*"The turf is so much easier than the grass and I can play so much faster! And I like that anyone can use it, so we can come here every day and run around and play hockey!"*

**Timmy, U12 Hornets:**

*"It's great to have an all weather field like the other clubs we play and make it easier to hit the ball"*





# Glebe Men

## 2024 Highlights to date from Men's Director, Adrian McKeown

A highlight for 2024 so far have been a return to 6 grades (up from 5 in 2023), with Glebe entering a new team in Sydney League 2 (SL2).

Many of last year's Premier League 3 (PL3) players are now in that team and it's going well.

But I must say the biggest thrill of this year by far has been training on the new turf down at the Crescent. I will never forget the feeling of walking down through Glebe to the first week of training on a Thursday night at the new turf. A new turf! in Glebe! Whilst it's not full size, it's a great start and should provide for great opportunities in terms of recruitment, especially for our juniors. There's a 'back to the clubhouse' vibe afterwards with food being laid on and whatever game of footy happens to be playing on TV.

There's been a great intensity at training in general, with Tuesday training at Cintra having great numbers attending and Thursdays at the Crescent also healthy attendance.

We have a great lineup of coaches this year which is making the selections process a lot more seamless and refined than in previous years. A shout out to the following coaches: Craig, Mark, Adam, Brad, Darcy, Gareth and Hamill, backed up by our dynamic Men's captain, Mack. See page 10 for an insight into the minds of some of our Coaches.

Oh yes, and another highlight has been running around in our new strip! The new uniforms are a modern interpretation of yesteryear's and have a smart retro collar.



Above: Mark Paterson, Aleks 'Mouse' Manou and Tim Pritchard model the new Men's uniforms



Left: Pat Nilan and teammates in the uniform of old

Some of our players, old and new:



Dylan Yates, Grant Martin and Zach Jaensch



Sam Bagley and Jacob Warnock



Seb Derrick, Caleb Burke and Gareth Mealing

# Glebe Men

---

And finally:

Shouts out to the players who have achieved milestones this year – check out page 3 for these achievements.

Also to our new players joining the club from other clubs and from further afield, particularly the Central Coast and Wollongong.

---

## 6 Men's teams in 2024!

---

**Adrian McKeown**  
Men's Director



*First grade winners are grinners!*



## Welcome to 2024 – halfway through the season already!

Once again in 2024 we have been able to field 7 Women's teams, allowing us to have the SWHL competition covered in all grades with ML1 and ML2 featuring our GWD collaboration teams with Western Districts, before it's maroon ML3-6.

And our SEHA Div3 conquering 2023 team is back again in '24, but this time promoted to Div2, and more than holding their own – sitting top of the table at the mid-point!

Getting 7 teams on the field each week is no mean feat, and we all owe a massive thank you to the Women's Committee who spend hours each week managing player numbers to ensure all teams can be competitive.

Helping this, thanks to the hard work of those involved in our collaboration committee, there has also been a significant change in the SWHL rules this year, that now allows our ML3 Glebe players to play up in the ML2 GWD team, and vice versa, allowing our Women to now have a fully connected pathway – where we can help all teams out, and also give aspiring players in ML3 the opportunity to try their skills at the next level.

**Mel Newton**  
Women's Director



*All smiles from team SEHA's Sophia, Ellie and Georgia*



*ML3's Liv Branson on the run against Sydney Uni*



*Post-training dumpling tradition is still going strong in our Women's teams*



*ML2 half time talk from Coach Clare*

# Meet the coaches!

## Where would be without our wonderful coaches?

We have the benefit of the wealth of experience of our fantastic team of coaches at both Glebe and GWD.

In this edition of the Red Rag, we want to celebrate these brilliant people, and put faces to names for our whole Club to know them.

It's hard to get all these fabulous leaders in one place, all at once! But here are both our Men's and Women's coaches, where we managed to get almost all of them!

### Women's coaches

Glenn Lim, SEHA; Clare Prideaux, ML2; Corrina Aitken, ML1, and Ken Wark, ML1 assistant coach (& U16 Fire); Kate Alexander, ML3; Jake Ribarovski, ML6; Doug Allison, ML4.

(absent: our ML5 coaches, Michael Monteforte and Ross Bougoukas; and ML2 assistant coach, Phoebe Kershaw).



### Men's coaches

(and club captain)

Mack Noller, Men's club captain; Gareth Mealing, SL3, Mark Paterson, PL1 assistant coach; Darcy Tobias SL2; Craig Martin, PL1; Adam Campano, PL2; Aaron Oman GDHC Performance Coach.

(absent: our PL3 coach Brad Goodridge and SL4 coach Hamil Bhulla).





# Meet the coaches!

To get to know some of our coaches a little more, we thought we'd ask what makes their coaches brains tick, and to share a favourite hockey photo...

## Corrina Aitken, Women's ML1

What's your favourite hockey memory?  
**Playing first division state champs with my daughter Annie Rose and having mum and dad on the sideline to watch us.**

As a coach, what is your 'golden rule'?  
**If you give me 100% effort every time you step on the field - outcomes don't matter.**

What is the most important lesson a hockey coach has ever taught you?  
**You are only as strong as your weakest link so encourage all the players around you to get their best game. Culture is everything.**



Corrina getting into the spirit of a "Tacky Tourist" hockey fundraiser



## Adam Campano, Men's PL2

What's your favourite hockey memory?  
**As a club member, being involved in the amazing period of time that was 2005-2008, in which Men's 1st grade won 3 premierships. The 2011 3rd grade premiership was a nice playing memory.**

As a coach, what is your 'golden rule'?  
**Plan, Prepare, Execute.**

What is the most important lesson a hockey coach has ever taught you?  
**So many from Pat Nilan - Pass early; Support the ball carrier; Stay close in the tackle; Diligence to personal fitness (I never followed this advice); body feints "your stick goes this way, and then you go the other way!"; moving one's body around the ball to get on forestick; that the ball's only got to go over a 2 inch line.**



Campano proudly receiving a guard of honour on playing his 600th Senior Club game



# Meet the coaches!

## Glenn Lim, Women's SEHA & U16 Hornets

What's your favourite hockey memory?

**Coaching a team the concept of 'coach yourself' at training and then turning up to the wrong field the following game.**

As a coach, what is your 'golden rule'?

**It's less about what you did wrong and more about what you do next.**

What is the most important lesson a hockey coach has ever taught you?

**Give it your all, but make sure to enjoy the moment.**



*Glenn running the stick gauntlet after coaching his SEHA team to Division 3 glory in 2023*

## Hamil Bhulla, Men's SL4

What's your favourite hockey memory?

**Playing reciprocal high school hockey where we got to play, stay and hang out with other kids.**

As a coach, what is your 'golden rule'?

**Be consistent and have fun.**

What is the most important lesson a hockey coach has ever taught you?

**Trap the ball.**



*Hamil features often in the Player's Players recognition*

## Minkeys coaches spotlight

Coaching careers can start anywhere, and where better for parents than coaching their – and others' – little ones!



Meet our Minkey coaching duo: Steph and Michael!

**Steph started playing hockey at school at 10 years old, and decided it was 'her sport' and joined a club at 15 years old - consequently missing out on playing Juniors herself.**

**Michael got into hockey when he met Steph, and since then they've been a 'hockey family' – daughter Kelsie has been attending games since she was approximately 4 months old, with Michael getting into coaching shortly after.**

**They both decided it would be an invaluable experience to mentor Kelsie throughout her hockey years and as soon as she was old enough got her into Minkey, and now coach.**

***Tune in to the next Red Rag when we'll feature more of our coaching team!***

# Glebe on tour

## SCC Singapore 6s

The success of last years' trip to the annual Singapore 6s Hockey tournament by a fabulous Glebe Women's team – coming home with a magnificent Plate – was such that the in 2024 we had 3 teams' worth of Players keen to compete.

So in the last weekend of February, the Glebe Women's Hornets, Redbacks and a Men's team jumped on a plane! (for at least one of the players, for their first overseas trip without their parents! Can you guess who?)

Of course, before hockey could be played, acclimatisation was needed. This started with a first evening port of call being the dinner sight of the La Pau Sat markets, while the 'free' day involved an excursion to Sentosa island for the day, rocketing down the luge and relaxing at a beach club (resulting in some slight sunburn for a few of our players!)

But back to the hockey action:

All teams performed admirably, the highlight of which was the Glebe Men winning the Bowl division (3rd grade) in a 5-2 goalfest. While the Glebe Women Hornets lost the Bowl division final 0-1 to last year's Cup (1st grade) champions and the Glebe Women Redbacks were knocked out in the quarter finals after reaching the Cup playoffs.

But of course the real winner was Club spirit, with a great experience for everyone leading into the 2024 season.

Thank you everyone who made the trip possible, especially to Mon Bordignon, whose organisational skills were tested to the max securing accommodation in a city that was in the midst of Taylor Swift mania.

## A great time on and off the field



*Hornets: Liv Branson, Carolyn Pitt, Faye Hughes, Emily Williams, Georgia Branson, Alex Branson; Aisling Klimoski, Hannah Yeo, and Mon Bordignon*



*Redbacks: Asha Machin-Hunt, Zoe Brown, Lydia Najdzion, Jessica Kennedy, Cate Heath; Aoife Mullan, Amanda Chivers, Ally Catterson and Delilah Rodrigues*



*Men: Mack Noller, Jake Ribarovski, Pat Wark, Josh La Spina, Ian Paterson, Clark Foster; Dan Palomeque, Robert Frew and Doug Allison*





# Derby Days

## Trevenar-Wark Cup

After taking out the Bruce Trevenar – Harry Wark Memorial Cup in 2023 for the first time since 2015, Glebe had high hopes for a repeat performance this year.

It was a fantastic day of both hockey and inter-club catch ups and banter, sadly, the overall result went the way of Briars.

But! The real highlight of the day for Glebe was the stunning come back from the PL1 Men, who turned around a 0-3 half-time deficit to win 4-3 in the dying minutes, with a hat trick to Orlando Travis. Great to hear the Club song belted out from the changerooms post that game!

The weather wasn't on our side either this year, but a great day was had by all, with the bake sale and BBQ going great guns.

*Club spirit out in full force*



## Nilan-Connelly Cup

In 2024 a new Club Day has been established, between Glebe District Hockey Club and Sutherland District Hockey Club. Competing for a new Cup, named after two greats – Patrick Nilan and Kevin Connelly – the stage has been set for an exciting interclub fixture.

As two clubs with strong community ties from the youngest of Juniors through to Senior Men and Women, this new event has created the chance for a day that involves all areas of our Clubs.

Starting with U10 and U12b Juniors, before moving onto Men's PL3, 2, 1 and Women's ML3 and 5, it was a stiff day of competition,

Unfortunately for Glebe, Sutherland had the run of the day, with all but the U10 game going the way of the teams in blue.

Sutho hosted a great day, and we'll be back next year to get the silverware!



*Go Shani go!*



*PL1 Men with the Patrick Nilan and Kevin Connelly Cup*



# Around the grounds

## Congratulations!

We love love at Glebe!

Congratulations to ML3 and 4s Erin McCleave and her partner Dan on their recent engagement.

And to ML2's Phoebe Kershaw and SL3's Tom Hurrell on their recent wedding and impending newborn!



Erin and Dan with kids Noah and Emmett



Phoebe and Tom walking into wedded bliss

## Remembrances

Remembering members of our hockey community who we have lost recently:

—  
**Patrick Joseph Nilan OAM**

Glebe District Hockey Club Life Member since 1971

*(See following pages for GDHC Life Member biography)*

—  
**Billy Jardine**

Glebe hockey player from 1971-1985

—  
**Robert 'Bob' Aitken**

Hockey NSW Life Member

—

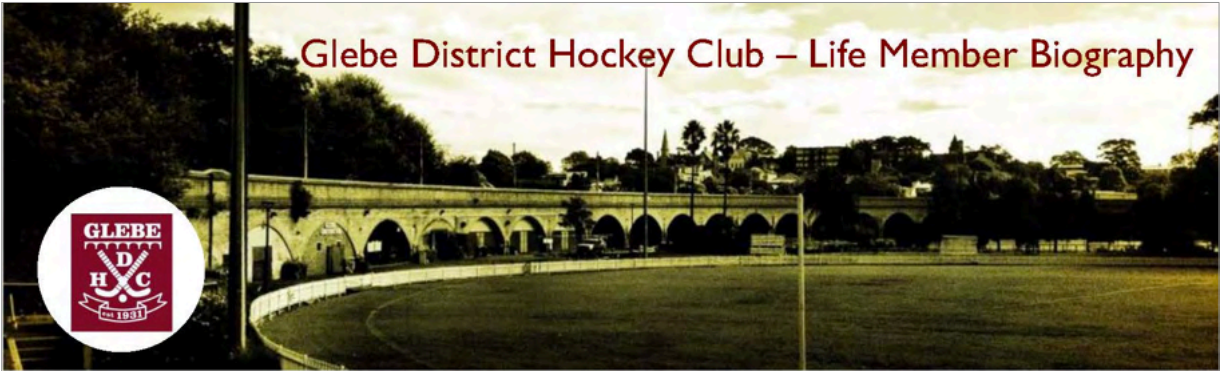
## On top of the world

Not content with simply testing the legs at Singapore 6s, and making a late play for a #glebeglobal prize, Pat Wark made it up a rather large mountain following the hockey weekend away in early March – donning his 6s Gold medal. Get in!



# Remembering Patrick Nilan OAM

For newer Members of the Club, and for those who knew Pat well and simply love to remember his story, here is the GDHC Life Member Biography for Patrick Nilan OAM.



## Glebe District Hockey Club – Life Member Biography

### Patrick Joseph Nilan OAM

**Born 30th of June 1941**

**Elected Life Member in 1971**



*Patrick Nilan is undoubtedly the best forward ever to put on a Glebe shirt. Fast and with great anticipation, he always gave it everything he had. Patrick achieved hero status with the Glebe supporters on the sideline, whom he frequently thrilled with his amazing feats on the Hockey field.*

Patrick Joseph Nilan, was born on the 30th of June 1941, the eighth of ten children to John and Annie Nilan. John and Annie had arrived in Sydney in 1937 from County Cork in Ireland. Patrick's family consisted of 8 sisters and 1 brother and are listed in order; Mary, Cecelia, Agnes, Trudy (Nee Diviney), Patricia (Deceased 2009), Theresa, John, Patrick, Ann and Pauline. The family lived in Rose Street Darlington, behind Sydney University. The Nilan family home was later demolished to make way for University of Sydney's Noel Martin Sports and Aquatic Centre.

Patrick attend St Kieran's - Golden Grove Primary School which was situated on the boarder of Newtown from 1947 – 1951. He continued his secondary Schooling at Saint Benedict's Marist Brother's School, Broadway from 1952 - 1956. On leaving school Pat became an apprentice carpenter, working at Hudson's timber yard on Blackwattle Bay, Glebe and continued in the carpentry trade all his working life until retiring aged 65 years. Glebe High School (now Sydney Secondary College, Blackwattle Bay Campus) was built on the Hudson's Timber Yard site in the 1980s.



**Above:** Patrick Nilan in his 1968 Summer Olympics in Mexico City, Mexico playing uniform.

Glebe District Hockey Club Life Member – Patrick Nilan





# Remembering Patrick Nilan OAM

He started playing hockey in 1956 for the Saint Benedict's Under Sixteen team in a Saturday morning junior competition conducted at Saint Paul's Oval in the grounds of Sydney University. Saint Paul's Oval was a stone's throw from Pat's Darlington home. In those days the Glebe junior teams were organised by Mr. Vernon Turner.

In 1958 Pat progressed to the Glebe senior ranks and it soon became clear he had exceptional talent with a good work ethic and excellent motivation.

In 1959 he was selected in the Glebe first grade team, where he played until 1978, playing a total of 361 first grade games. This is a Glebe Club record (Ken Wark snr played 342 first grade games). Pat captained Glebe first grade in close to 300 of those games, and won seven Sydney Hockey Association first grade premierships with the Club. In total Pat played 454 senior games for Glebe.

Pat trained hard and practiced five days a week during the hockey season either at Jubilee Oval or Wentworth Park, Glebe. Wentworth Park was directly across Pymont Bridge Road from Pat's workplace at the timber yard. Pat had self-discipline in spades. Throughout his career Pat kept himself extremely fit, and this was one of the reasons he was selected in the Australian team for 12 years. When some of Pat's friends and contemporaries were hitting the high life, he would not compromise his training schedule to join them. He finished his training first and partied second.

He was an athletic player, fast, nimble and agile, with exceptional balance and poise. Pat played at inside left and read the game like a book. At club level Pat was often swamped by opposition defenders, who realised the dangerous threat he posed and they gave him extra-special attention. This made it difficult for Pat to "star" at club level. It is testament to Pat's resilience, toughness and durability that he was able to back up week after week, year after year, considering the special treatment he was dished-up by opposing teams, who sort to stop him by fair means or foul.

The Glebe forwards who played with Pat were extremely grateful for his presence on the field, as they were given more space and freedom than they should have got, all things being equal, because their markers were busy helping to contain Glebe's play maker. Pat was a selfless player. Everything he did was for the benefit of the team. He was an inspirational



**Above:** Patrick Nilan pictured outside the Glebe DHC Clubhouse Railway Arch 4 Jubilee Oval on a Saturday afternoon.

Glebe District Hockey Club Life Member – Patrick Nilan





# Remembering Patrick Nilan OAM

player, and an inspirational captain, who was admired for always being fair, honest and reasonable. His sportsmanship was recognised by all who saw him play.

Pat made the NSW Under 21 team in 1960 and the NSW Senior team in 1961. At the 1961 Australian Championships he was selected in the Australian senior team. He was a member of the NSW hockey team at Australian Championships from 1961 to 1972. He was Vice Captain from 1962 to 1965 and Captain from 1968 to 1972. Pat was the NSW Team coach in 1979 and 1980. Pat is the best inside left ever to have played for NSW and perhaps even Australia.

Pat represented Australia from 1961 to 1972. During this period, he played in 3 Olympic Games, 1964 at Tokyo (bronze medal), 1968 at Mexico (silver medal) and 1972 in Munich. In total Pat played 86 internationals for Australia, in an era when international matches were infrequent.

Pat was inducted into the NSW Hall of Champions in 1979. He is one of only five men to have been afforded this honor, the others being Brian Booth, Ron Riley, Paul Dearing and Ken Wark (Jnr). In 1982 he received an Order of Australia Medal (OAM) from the Australian Government in recognition of his services to hockey at Local, State and National level. In 2007 he was inducted into NSW Hockey's "Hall of Fame". Pat is one of less the twenty hockey greats who rated a notation in the Oxford Companion to Australian Sport. This is a testament to his achievements over an international career spanning 10 years.

He has also served his Club well. Pat was Glebe Club Captain from 1962-66 and again in 1971 and was Glebe Club President from 1972-77. He coached Glebe junior teams for decades and coached the Club's first grade team for many years. Pat's elder brother John who is also a life member is the current Glebe first grade manager, a position he has held for many seasons.

Pat married librarian Bev Reddie in December 1969 at Saint James' Catholic Church, Glebe. Before she married Bev lived with her family at 30 Hereford Street Glebe, just around the corner from the Church. She went to primary school at Saint James' School Woolley Street Forest Lodge (Glebe) and for secondary school she attended Saint Scholastica's College in Avenue Road, Glebe.

Together Pat and Bev had four children, three boys and a girl. Shane their eldest child (born 1971) has played for the Glebe Hockey Club for Decades (376 senior games) and Aaron born 1974 (268 senior games) before they prematurely retired because of persistent niggling



Above: Patrick Nilan after his stint as an Olympic Torch bearer before the Sydney 2000 Olympics.

Glebe District Hockey Club Life Member – Patrick Nilan



# Remembering Patrick Nilan OAM

injuries. Both of them represented NSW in junior and senior teams. Pat and Bev's third son Matthew Nilan (born 1978) 'defected/ escaped' to rugby union. Matthew Nilan was an accomplished rugby union player and played many games in the Eastwood First Grade team. He is now coaching the Eastwood 2nd Grade side. Pat and Bev's daughter Emma Nilan (born 1973) was a netballer during her school days and enjoyed the sport.

Bev has fully supported Pat in all his life endeavors, and her encouragement and enthusiasm has made for a happy and productive marriage. In the early days of their marriage Pat and Bev rented a house in Victoria Road Glebe, which runs along the top of Jubilee Oval on the uphill side. In 1972 as the Nilan family grew they bought a house in West Ryde, where they have lived for over 30 years.

In 1984 Pat donated a Perpetual Trophy to the Club, which was named by the Management Committee as the Pat Nilan Trophy. It is presented to the most outstanding Club member for the year, as adjudged by the Management committee. The first winner of the Pat Nilan Trophy was Pat's close friend Graeme Gilmour.

In 2001 the Sydney Hockey Association honored Pat by naming an SHA perpetual award in his honor. It is called the Pat Nilan Rising Star Award.

Pat states that he was originally attracted to the club for its family type frame work, its friendly atmosphere, its winning culture and also for being firm but fair on the field.

Pat has been a great contributor to Club affairs for over 55 years. A modest chap, he operates in a low key, unobtrusive way. On the field he achieved outstanding success for Glebe, NSW and Australia. Off the field he labored tirelessly, without fuss or bluster to help keep the Club a going concern. Pat's contribution to Club affairs and Club life for over 55 years has been immense.

His advice for the current committee is to keep the wheels turning!!!

Thank you Pat, your efforts are much appreciated.



Above: Patrick Nilan with his eldest son Shane Nilan in 1971. Picture taken in the backyard with a miniature hockey ball and stick.

Glebe District Hockey Club Life Member – Patrick Nilan



# From the archives

## Edition 3: Club Legends tribute

Glebe DHC members will get a kick out of this classic cartoon strip that appeared in the August 1996 edition of the Glebe DHC Red Rag newsletter. It captured the personalities and mannerisms of some prominent club figures at the time in a way that will bring back fond memories.

### Les Wark - The Club Whisperer

First up is Les Wark, the official club whisperer back then, always with his ear to the ground finding the latest news and gossip. Les had his own "Under the Arches" section in the Red Rag where he'd dish out the dirt on members' lives, social events, and all the banter happening around the club - all delivered with a big dose of good-humoured jest.

### Harry Wark Jr - The Drill Sergeant

Next, we have the one and only Harry Wark Jr, who ran the famous warm-up drills for the entire junior faction every Wednesday night at Jubilee Oval. Imagine having to corral over 150+ juniors with limited attention spans through dribbling drills from one end of Jubilee to the other, stick out, body back defend, the legs - it's no wonder Harry had his classic sayings like "If you don't like it, jump the fence and buzz off!", "Give it a rub, it'll be right!", and "On your bike!"



See full cartoon on following page

### Terry Kelly - The Merch Police

Terry Kelly, the Junior Convenor in '96, was an energetic supporter who always asked players, "Where's your GlebeDHC merchandise?" Terry's still on the sidelines today, helping coordinate and manage our senior men's teams.

### Artie Moir - Coach

Artie Moir, who coached one of the club's most talented U17 premierships-winning sides in '96, sweeping all before them, was also the equipment manager at the time. His inclusion was more a term of endearment from some of those talented players he whipped into shape.

### Harry Wark Snr - The Patriarch

Clubman Harry Wark Snr was a fixture at Wednesday night training as the clubroom manager, bringing the sausages for the BBQ. He'd often sit on a club barstool overlooking Jubilee Oval at the entrance to the GlebeDHC Clubhouse, watching over the 200+ juniors training, with his eight grandkids and two sons Harry Jr and Les among them. Harry Snr would stick around to eavesdrop on senior selections too.

### Patrick Nilan - The Great Motivator

Last but not least, we pay homage to the only Great Patrick Nilan. As first-grade coach and on the selection committee in '96, the energetic and eccentric Patrick would be down at Wednesday training to dish out pearls of wisdom to the young players like "Dummy one way and go the other!" and "What do you know?"

Those were the days! Hopefully, this trip down memory lane brings back all those memories of the life and characters that make Glebe DHC so special.

From the archives of  
**Mark Paterson**  
and the GlebeDHC Newsletter Team



# From the archives

## Edition 3: Club Legends tribute

From August 1996 Red Rag Newsletter



Cartoon by Christian Campano

### GLEBE BOYS A FEW OF THE OLD GUYS....

#### LES WARK



#### HARRY JNR



#### TERRY KELLY



#### ARTIE MOIR



#### HARRY SNR



#### PAT NILAN



The Glebe District Hockey Club's newsletter was first published on May 10th, 1958, with the first headline reading: **Official Publication of the Glebe District Hockey Club – Introducing a Newsletter to the Glebe DHC.** The fact that it has existed since 1958 is a testament to the dedication of the Club members to keeping everyone informed about the Club's activities and achievements.

# Sponsor spotlight

Hockey got you injured?  
Or feeling some pain?

**RTP PHYSIO**

Reduce pain.  
Restore mobility.  
Return to play.

Ask for your  
GDHC member  
discount

Official GDHC sponsor

[rtpphysio.com.au](http://rtpphysio.com.au)

RTP Physiotherapy, located at 20 Glebe Point Road Glebe (within the Montrose Medical Practice), are experienced physios who will work with our members to help accomplish their health, wellbeing, fitness and sporting goals.

From injury assessment management, rehabilitation exercises and individual treatment plans, the team at RTP (Return to Play!) offer more than just a physio consultation.

And as a Club sponsor, RTP provides discounts to GDHC members – just let them know you are from Glebe Hockey when booking.

RTP Physio have been proud sponsors of GDHC since establishing their practice in 2020, and we are thankful for their generous support, expertise and genuine care.

**20 Glebe Point Road Glebe**

(within the Montrose Medical Practice)

[www.rtpphysio.com.au](http://www.rtpphysio.com.au)

JDH is an exclusive field hockey brand, designed in Australia by 5x World Player of the year, Jamie Dwyer.

JDH sticks have been designed and manufactured with extreme detail. Jamie has pored over every aspect of his sticks, using all of his knowledge and experience to create something truly special. From endcap to toe, Jamie has created the perfect stick, something he is proud to put his name on and others are proud to use.

JDH offers Glebe Hockey a generous 35% off all the JDH 2024 range – including senior and junior sticks, bags, gloves and face masks – on website orders. Simply select your product from the [2024 Catalogue](#), and go to the website to order using the GDHC Member Discount: **GlebeHC2024-35%**

A long term sponsor of the Club, JDH has been incredibly generous over the years, and Glebe Hockey are thankful for Jamie's ongoing support.

[www.jdhsports.com](http://www.jdhsports.com)

**JDH**

rhythm & flow  
2024 range out now!

35% off  
JDH 2024  
range for  
GDHC  
members

Official GDHC sponsor

[jdhsports.com](http://jdhsports.com)



Local family-friendly, community club  
for food, drinks and fun.

[www.leichhardtbowlingclub.com.au](http://www.leichhardtbowlingclub.com.au)

88-92 Piper St, Leichhardt



# Your Glebe Board

---



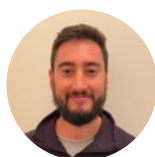
**Sue Heath – President**  
[president@glebehockey.org.au](mailto:president@glebehockey.org.au)



**Katrina Cochrane – Development Director**  
[development.director@glebehockey.org.au](mailto:development.director@glebehockey.org.au)



**Mel Newton – Women’s Director**  
[womens.director@glebehockey.org.au](mailto:womens.director@glebehockey.org.au)



**Josh La Spina – Treasurer**  
[finance.director@glebehockey.org.au](mailto:finance.director@glebehockey.org.au)



**Adrian McKeown – Men’s Director**  
[mens.director@glebehockey.org.au](mailto:mens.director@glebehockey.org.au)



**Carolyn Pitt – Communications Director**  
[communications.director@glebehockey.org.au](mailto:communications.director@glebehockey.org.au)



**Tara Taylor – Junior’s Director**  
[juniors.director@glebehockey.org.au](mailto:juniors.director@glebehockey.org.au)



**Ellen Kennedy – Secretary**  
[club.secretary@glebehockey.org.au](mailto:club.secretary@glebehockey.org.au)



**Glebe  
District  
Hockey  
Club Inc.**

*Previous editions of the Newsletter are available  
on our website.*

We endeavour to ensure that information in this newsletter is accurate. If you notice any errors or omissions we will do our utmost to correct it. And if we have missed anything that you think should be included, please get in touch so we can consider for future editions.

**Family | Equality | Commitment | Contribution**  
**A champion club, a club of champions**