



Glebe District Hockey Club

2024

Annual Report

Celebrating 93 years

We acknowledge the Traditional Owners and Custodians of the land where we live, work and play. We pay our respects to Elders past and present.

We celebrate the stories, culture and traditions of Aboriginal and Torres Strait Islander Elders of all communities who also live, work and play on this land.



Table of contents

Life Members	3
GDHC Board of Directors 2024	4
A brief history of GDHC.....	5
President's Report.....	6
Finance Report	9
Glebe District Hockey Club Strategy Progress.....	11
2024 Member Survey Results.....	13
2024 Turf Report.....	17
2024 Grant Applications	19
Communications Report	20
Administration Report	22
Development Report.....	23
Junior's Report.....	24
Women's Report	27
Men's Report.....	48
Club Trophies and Honours 2024	69
In Remembrance.....	81
Appendix - Financials	85

We endeavour to ensure that information in this Annual Report is accurate. If you notice any errors or omissions we will do our utmost to correct it. If we have missed anything that you think should be included, please let us know so we can consider for future reports.

Life Members

1947 Mrs Ester Taylor *	1998 Les Wark
1947 Jack Quinlin *	2000 Margaret Howe *
1952 Jim Kenny *	2000 Robert Wark
1956 Bill Ryan *	2008 Danny O'Brien
1958 Jack Worley *	2010 John Nilan
1964 Harry Wark Snr *	2012 George Manou
1967 Kelvin Dickey *	2013 Vernon Howe
1969 Ken Wark Snr *	2017 Peter Busch
1971 Patrick Nilan *	2017 Andrew Goodrick
1973 Bill Stubbs	2018 Helen Howe
1975 Fred Letts	2018 Adam Campano
1975 Graeme Gilmour *	2019 Ken Wark Jnr
1975 Robert 'Charlie' Brown	2021 Ann Rochester
1977 Paul Rogers	2021 Carole Wark
1981 John Diviney *	2021 Michael Bougoukas
1986 Molly Wark *	2021 Colin Rochester
1989 Colin Brown	2023 Jim Oman
1989 Keith Paterson *	2023 Maureen Paterson
1992 Martin Howe *	2023 Terry Kelly
1996 Robert 'Bob' Taylor	2023 Aaron Nilan
1997 Harry Wark Jnr	2023 Melissa Newton
1997 Geoffrey Paterson	

* Deceased

This year we said goodbye to Life Member Patrick Joseph Nilan OAM. You can read a eulogy for Pat in [In Remembrance](#).

GDHC Board of Directors 2024



President
Sue Heath



Junior's Director
Tara Taylor



Women's Director
Mel Newton



Men's Director
Adrian McKeown



Development Director
Katrina Cochrane



Communications Director
Carolyn Pitt



Finance Director
Josh La Spina



Club Secretary
Ellen Kennedy

Public Officer
Josh La Spina

Honorary Auditor
Stephan W. Van

A brief history of GDHC

★ 1930s GDHC began

- 1931 – Brother Macartan Keegan creates a hockey team at Saint James Patrician Brothers School Forest Lodge (Glebe).
- 1933 – First season played under the GDHC banner.
- 1937 – Brother Macartan Keegan transferred back to India.

★ 1940s to 1950s GDHC's golden years

- 1947 to 1954 – 7 first grade premierships (SHA record).
- 1948 – First Junior team fielded (Under 16s).
- 1949 – Vernon Joseph Turner expands the Junior teams from 1 to 6.

★ 1970s GDHC women join

- 1978 – First women's teams entered into North Shore Hockey Association competition.

★ 1990s GDHC united

- 1990 – Women's and Men's teams united under the GDHC umbrella.
- 1991 – Three women's teams play in the Eastern Districts competition.

★ 2000s GDHC enters a new era

- 2000 to 2016 – In excess of 50 premierships won across the Club.

★ 2020s GDHC celebrates new milestones

- 2021 – First female President elected to lead our Club.
- 2022 – GDHC fields more Junior teams than any other club in the SEHA competition.
- 2023 – GDHC entered into an initial 2-year collaboration with Western Districts, establishing a Glebe presence in ML1.

AND NOW, IN 2024:

- The realisation of the new turf at The Crescent created more opportunities than ever for hockey to be enjoyed by the local community. Read more in the [2024 Turf Report](#), and enjoy the coverage of all the good things the new turf has enabled throughout the reports in this Annual Report.

President's Report



President
Sue Heath

Dear Life Members, Members, and Families –

It is my privilege to present to you my 2024 season reflections as President of the Glebe District Hockey Club.

My heartfelt thanks go to every player in every team, Juniors through to Seniors for choosing GDHC as their hockey club of choice. Regardless of where your team finished on the points table, I genuinely hope that you've enjoyed your season, that you've had the opportunity to play some great hockey, develop your skills and create new friendships.

My thanks are also extended to our community of volunteers. Coaches, managers, clubhouse managers, umpires, committee members, social organisers, BBQ chefs, canteen servers and social media master minds. Your contribution continues to strengthen our presence in the community and that is something to be very proud of.

For the Board, our season commenced in January when we came together for our annual strategy session. An opportunity to look back, look forward and agree to a set of activities that could further **improve** the GDHC, **retain** our membership and **grow** the GDHC in our community in a sustainable way. You can read more about our progress in the [Strategy Progress](#) report.

In February and March our annual team trials and player selections were front of mind, setting us up for the start of the season. We welcomed Aaron Oman back to GDHC as Performance Coach for our top senior teams in both women's and men's. A new role was identified to support our coaches by leveraging Aaron's deep experience and knowledge of the game. As we learn more about the opportunities this role can deliver for our Club, I am confident that our coaches and players will benefit from this level of focus.

In April the season proper commenced in earnest and with that the launch of our new Club playing uniform for Juniors and Seniors. In the main, feedback has been very positive and New Balance have proven to be a positive partner to work with. It was a team effort to outfit our players, and we have learnt a great deal from the experience. Which is especially important as we head into merch options and timings for 2025.

April also delivered the opportunity to finally make use of the Federal Park Synthetic Field (aka The Crescent Turf). A big thank you to the City of Sydney Council who have been terrific in accommodating our requirements. Our weekly schedule included Monday, Tuesday and Wednesday 5pm to 7pm, Thursday 5pm to 10pm and Saturdays 8am to 11.30am. The impact of our 'very own' turf has been incredible. Juniors through to Seniors, training and game day, school holiday clinics and are our very first social summer competition has given us all an incredible lift.



Equally pleasing is the growing social interaction across our Club, yet another benefit resulting from the turf. Wednesday afternoon BBQs for Juniors and their families, Thursday night dinners with our Senior women and men back at the clubhouse and our popular pop-up clubhouse at the turf itself Saturday mornings. These moments strengthen our community, strengthen our brand, strengthen our culture. They take effort to bring to life, but the impact is enormous.

In May we all felt the passing of Life Member and Club legend, Patrick Nilan OAM. I had the great opportunity to talk with Pat on several occasions. He was kind and generous with his time and he loved his Club. He shall be forever missed.

We held our annual Arthur Stubbs Foundation event in June. A celebration of community with an emphasis on all things Juniors. It was a wonderful evening that highlighted the very best of GDHC. A big thank you to Lisa Bonhote who was tireless in her role as chief fundraiser. Our 2025 event is shaping up to be something very special with a new date and a new approach. I encourage you all to participate where you can.

June delivered some long-awaited news regarding our application for the Community Building Partnership Grant. A grant totaling \$15,450.00 was awarded to GDHC for the purpose of delivering positive social, environmental and recreational outcomes. Our grant will be invested towards the upkeep of our clubhouse with new chairs, tables, BBQ and a Smart TV at a minimum. I am very grateful for the work led by Mark Paterson, supported by Ian Paterson and Life Member Harry Wark – which you can read about in the [2024 Grant Applications](#) report. Thank you.

As we rolled into July, August and September we held live stream Olympics viewing at the clubhouse, hosted our annual Juniors disco, the ever-popular pub crawl for our Senior players (with a growing catalogue of limited-edition merch) and gathered to support teams that made their way through to finals. Junior presentation night was well attended despite the rain towards the end of the evening. I was once again privileged to be part of that event, watching fresh faced kids in their first year at GDHC hanging out with new friends, and our older Juniors whom I have known since they were in Minkey themselves, officially retiring as a Glebe Junior. Extraordinary.

A total of ten teams across our Club made it to round one of finals, with three teams going all the way and awarded premierships wins. Congratulations to our U10 Hornets, U10 Wasps and U12 Hornets. All coached by current players of GDHC.

October delivered a wonderful Seniors Presentation night, a huge event that was well attended. Congratulations again to all players nominated for a perpetual award and a huge well done to our winners. Especially Mon Bordignon, our higher-grade women's club captain who collected The Molly Wark Trophy and the Pat Nilan Trophy. Mon is an incredibly humble member of GDHC, and she goes about her work with the sole purpose of making the experience for others, better. For making the GDHC stronger. From the bottom of my heart Mon and on behalf of the hundreds of members in our Club that benefit from your energy, thank you.

In November we launched our first attempt at a social summer competition. It has been a fantastic 5-a-side comp and Lydia Najdzion is to be congratulated for driving this initiative forward. Lydia was on the sideline every week, often sitting in the rain adjudicating every game. Phenomenal effort. Thank you, Lydia.

The season has delivered many bright moments, with many I haven't even mentioned such as the Singapore 6's, sponsoring GDHC players at state level, master's achievements and finally achieving a restricted liquor license for the clubhouse. There is strong momentum behind us. What we do with it is up to all of us.



At this year's Annual General Meeting members will be asked to determine the future pathways for GDHC women and junior girls in the ML1 and ML2 competition. A decision that I am certain members will make with the very best of intentions and with genuine care for their Club. Placing the decision in the hands of all members is both fair and reasonable and I do hope that you have taken the time to review option papers and Q&A responses authored by members for members.

The Board has spent a disproportionate amount of time on this topic at the expense of other important areas we could be channeling our focus towards. The decision reached on the 8th of December will allow our Club to move forward in the knowledge that members have determined the future state. I encourage every member to be involved, and I hope to see a strong turnout at the AGM.

The conclusion of season 2024 will also acknowledge the incredible contributions of Tara Taylor, Mel Newton, Josh La Spina and Carolyn Pitt – Juniors, Women's, Finance and Communication Directors respectively, as they step down from their roles.

They are dedicated and committed members of our Club that have donated their time, skills and energy to GDHC over many years. They have been tireless in their efforts to make a difference, and they have done so with great humility and care. I for one will miss their wise council and perspective. Tara, Mel, Josh and Carolyn, on behalf of our Club, we thank you for your service.

Our Club is in its 94th year and I think that's remarkable. Such long tenure signals to me that our foundation formed by so many loyal and generous people along the way, continues to resonate to this day. Continues to attract new members, new families and new energy. Members genuinely care about the future of GDHC.

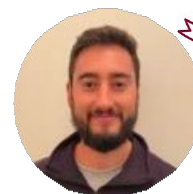
Finally, to our generous sponsors – Galluzzo Fruiterers, Leichhardt Bowlo, RTP Physio and JDH – thank you. Your support of GDHC is greatly appreciated.

And to my fellow Board members who continue to work tirelessly for our Club. You are exceptionally talented people who lead with integrity and always with a bigger picture in mind.

It has been a privilege to lead our Club this season, and I thank you for trusting me to do so.

Sue Heath

Club President



Finance Director
Josh La Spina

Finance Report

I am pleased to present the financial report for the Glebe District Hockey Club as of 31 October 2024, summarising our performance over the past 12 months. The Club has reported a loss of \$4,216.16 for the year.

While the overall result is a loss, the impact is mainly due to the introduction of new uniforms and higher turf-hire costs from the new Crescent turf.

Breaking down the Financial Statements for 2024

Playing Fees and Costs:

This year, playing fees and playing costs saw an increase in total. Several factors contributed to this rise, including:

- The introduction of an additional Sydney League men's team at a cost of \$4,785
- The rollout of new uniforms, was reflected in an increase to fees collected for the senior players of \$75 per player
- Association fees increase from Sydney Women's Hockey League (6%), Sydney East Hockey Association (12%), and Sydney Hockey (6%)
- New turf-hire fees for the Crescent Turf, which the Club now uses for training and matches on Monday, Tuesday, Wednesday, Thursday evenings, and Saturday mornings. The cost for the crescent turf in 2024 was \$11,906.15. This has replaced the need for Bankstown Turf and Camperdown Tennis Court. The club continues to hire Briar's turf on Mondays and Tuesdays.

The collection of playing fees from members continues to be the biggest challenge and an area for significant focus in 2025. Whilst I am aware of the significant cost of living pressures experienced by members, late payment of playing fees negatively impacts the broader Club.

I am still in the process of collecting the second instalment of playing fee for 2024. Moving forward, I will be recommending to the Board that a late payment fee be introduced for players who have not paid or responded to payment requests. Additionally, non-financial members will be reported to Hockey NSW. This means that players who have yet to finalise their 2024 fees will not be eligible to play in 2025.

Unfortunately, the NSW Government's Active Kids Rebate did not provide the same level of support for families in subsidising Junior playing fees this year. This was primarily due to a reduction in the rebate amount, with the Government halving the support, as well as Revolutionise (the registration platform used by all NSW Hockey associations), ceasing to accept the voucher codes in the system. The impact for families is an additional \$50 per child that is no longer subsidised by the government.

Sponsorship, Grants, Donations, and Other Income

We are incredibly grateful for the ongoing support of our main sponsors JDH Hockey, Leichhardt Bowling Club and RTP Physio. Long-term sponsor Galluzo's Fruiterers have new owners after many years due to the sale of the business. We will engage the new owners in 2025 to establish a new sponsorship commitment as a local business, supporting a local sporting club.

We are actively seeking a volunteer to fill the Sponsorship Coordinator role, which will be crucial in 2025 as we leverage the visibility of our new turf to attract additional sponsors and grants.

The Club again secured a grant from the City of Sydney Council, which continues to subsidize our clubhouse rent. The grant, valued at approximately \$16,800 annually, was renewed for 2025 after an A-grade assessment in the annual review.

Additionally, the Club was successful in receiving a local government grant thanks to the efforts of Mark and Ian Paterson and Life member Harry Wark. The grant will be used to purchase new chairs, tables, and other clubhouse improvements, including a BBQ, storage, and portable TV.

Arthur Stubbs Foundation

In 2024, we hosted another successful Arthur Stubbs Foundation Night, raising \$10,579.40. These funds are essential for supporting GDHC’s development programs. This year funds were utilised as per the table below.

National Championships Cost Subsidies	\$3,000
Junior Goalkeeping Equipment	\$2,280
Junior Umpire Development	\$3,160
Junior Development Days Turf Hire	\$1,650
Junior Uniform Subsidy	\$1,375

Social Functions & Raffles

The Club's Presentation Night, held at the Sydney University TAG Family Grandstand function room, was a significant event, with approximately 140 attendees—one of the largest turnouts for a Presentation evening.

Bar Trading

The increase in regular social events at the Clubhouse, including post-training dinners on Thursdays, contributed to strong bar trading throughout the year with a profit of \$7,478.80. This was an increase of nearly 10% on last year. This was led by our clubhouse managers and helpers, a huge thank you to Sue Heath, Lisa Bonhote, Henry Hunt, Daisy Noble, Clark Foster and Cate Heath.

Investment Income

In 2024, the Club restructured its savings to secure better returns. We invested \$220k into a 12- month term deposit at a rate of 4.9%, which will mature in early 2025, yielding interest of \$9,864.44. Additionally, we set up a high-interest account for any surplus cash. This move ensures the Club can generate better returns and makes reinvestment easier in the future.

In the recent club survey, we asked members for feedback on areas where they would like to see monies invested. Many responses focused on training and development, with suggestions including new equipment, specialised coaching, and the use of video technology. These valuable insights will be presented to the Board for consideration as we plan for the 2025 season.

Conclusion

2024 has been a year of growth and progress for the Club. While some costs have risen, particularly in areas impacting player and member experience, we have successfully navigated these challenges. A major highlight was gaining access to our own 'home' turf, which has fostered a positive culture, particularly on Thursday evenings and Saturday mornings.

This will be my final report as Finance Director for the Glebe District Hockey Club.

It was an honour to serve in this role, and I have greatly enjoyed working with the dedicated and passionate people within the Club. I wish the Board all the best for 2025 and extend my heartfelt thanks to the 2024 Directors for their hard work and commitment this year.

Financials in Appendix

Glebe District Hockey Club

Strategy Progress

In 2021, in my first year as President, the Board at that time defined a strategic program of work, with a **whole of Club focus**. We did this primarily to ensure the decisions we made considered **all members**. A 'one Club approach' that would further break down barriers across the three playing portfolios.

Improving, Retaining and Growing were identified as our core priorities. Simple yet purposeful priorities that members could easily connect with. Then, a set of focus areas were agreed. Activities that would address challenges, deliver a welcoming club experience and strengthen our future through sustainable growth.

There is increasing respect for the work the Board sponsors, evidenced by a growing number of members who want to play an active role in their Club. It is my opinion that our priorities are as relevant today as they were in 2021.

In January, the Board gathered at the clubhouse for our annual strategy session. An opportunity to look back, look forward and agree a set of activities that would become our focus for the next three years. Activities that could further **improve** the GDHC, **retain** our membership and **grow** the GDHC in our community in a sustainable way.

Our 2024-2026 strategy on a page reflects our Junior and Senior playing groups, coaches and umpires. It respects member feedback in areas such as the desire for specialist training, greater transparency and integrity relating to selection processes and more opportunities to connect socially.

Glebe District Hockey Club, Strategy on a Page (2024-2026)

Our Purpose To offer a modern-day hockey club experience for our members and families to connect with, whilst respecting our history and traditions.

Our Vision One club, where decisions respect and consider all members.

Priorities



IMPROVE

Address challenges

- ↑ Promote and increase sponsors.
- ↑ Deliver clear and advanced communication of Club dates.
- ↔ Ensure members have greater visibility of GDHC financials.
- ↔ Actively communicate member code of conduct expectations.
- ↔ Seek member views and opinions on a regular basis.
- ↑ Deliver a supportive and positive experience for all coaches with increased focus on developing capabilities.



RETAIN

Deliver a superior club experience

- ↑ Continually enhance our Junior Development programs.
- ↑ Ensure greater transparency of selection processes.
- ↑ Continually enhance Junior transition to senior hockey.
- ↑ Ensure key compliance requirements from governing bodies are achieved and maintained.
- ↑ Continue to encourage social connection within our Club community.



GROW

A sustainable future

- ↑ Strengthen the operating structure of the Juniors Committee.
- ↑ Strengthen umpire development in a supportive and positive way.
- ↔ Deliver regular specialist training including goalkeeper specific sessions.
- ↔ Create new connections with local community groups and drive hockey participation.
- ↑ Maximise opportunities resulting from the Crescent Turf.
- ↑ Continue to identify opportunities to access a local full-size turf.



- ↑ on track, keep going
- ↑ started, but more to do
- ↔ not started

Our Values

Family

Equality

Commitment

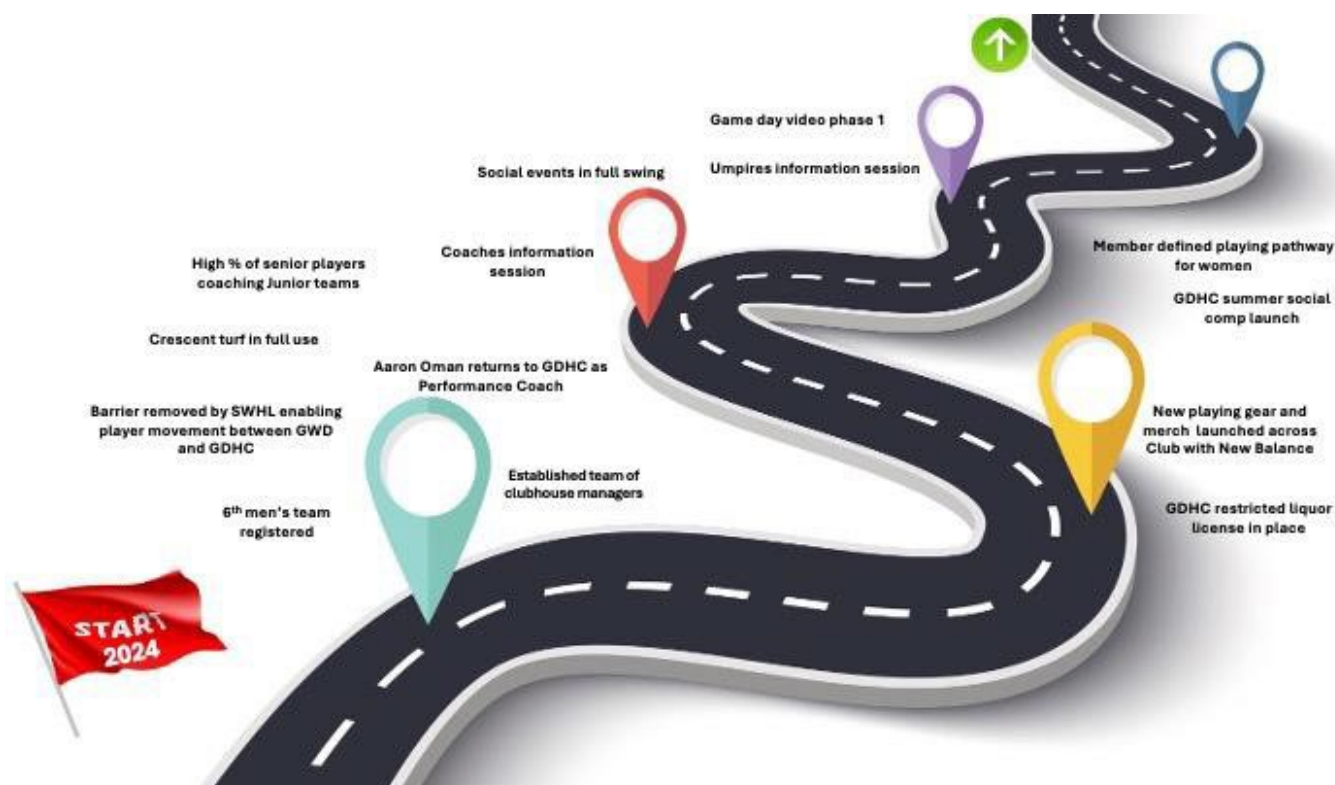
Contribution

2024 check point

As referenced in my President's report, the Board has spent a disproportionate amount of time this year on the collaboration with Western Districts Hockey Club. As a result, our strategic focus areas did not receive the attention they deserved.

What matters now is that these areas of focus are given priority in the coming seasons and that regular checkpoints are maintained to ensure we do all we can to ensure their success.

We have much to do as we head into season 2025. It's not all bad news though. In fact, some great work has been achieved this season. Testament to our members who are invested in their Club now, and the future.



2024 Member Survey Results

Our annual Club survey remains an important activity for member participation. It provides insights into the Board and committees to better understand what we are doing well and where we can do better (at a minimum).

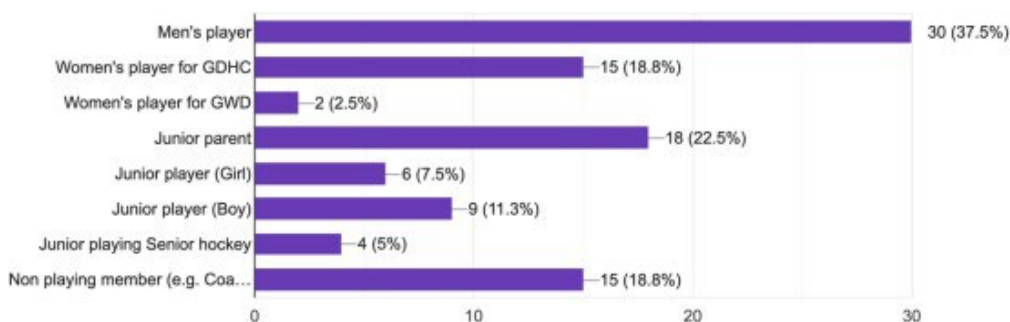
The 2024 annual Club survey was launched late in the season, which was a likely contributor to our very low response rate of 80 respondents (total) when compared to 131 responses in 2023. An additional survey was issued to our women around the same time, which in hindsight was likely not ideal. That survey was completed by only 38 respondents (total).

As we look at 2025 the Board will need to prioritise our Club survey, ensuring we consider:

1. The timing
2. The volume of questions vs questions that matter most.
3. How we better engage with members to ensure response rates are higher.

Club survey participation

Of the 80 members that completed the survey, our men’s playing group represented the highest proportion of responses, 37.5%, followed by Junior parents at 22.5%. Our GDHC women’s playing group represented 18.8% of responses whilst women in the GWD playing group had a response rate of 2.5%.



Note: respondents could choose more than one category to identify in

Summary

Whilst the response rate of the survey was low when compared to our membership population, key themes emerged. These include:

- culture concerns including perceptions of conflict across Club particularly relating to the collaboration with Western Districts
- lack of transparency in selection processes particularly for our women
- need for purposeful training

Survey results will form part of the 2025 Board strategy session.

And the survey said

Survey Data and Sample Verbatims		
Perception of Club	<p>91% of members tell us they would recommend GDHC to friends and family</p> <p><i>'Help the club continue growing plus it's a great club if we all work together' (non-playing member)</i></p> <p><i>'In the past three years playing at the club, I've had an amazing time. Not only have I stayed active, but I've also made great friends along the way' (men's player)</i></p> <p><i>'Family atmosphere and genuine club spirit' (junior parent)</i></p>	<p>8.8% (6 members) said they would not</p> <p><i>'The culture needs fixing first' (women's player)</i></p> <p><i>'I would be embarrassed if they joined, and they saw how grown adults are treating each other' (women's player)</i></p>
	<p>76% of members tell us they are highly likely to return to GDHC in 2025</p>	<p>12.5% (10 members) tell us they are not likely to return (6 non-playing members, 2 women players and 2 men players)</p> <p><i>'...once and for all resolve the Women's amalgamation. Its having a negative impact on our Club and goes against our traditions and family environment' (men's player)</i></p> <p><i>'...My grandchildren have moved to soccer. It is extremely well organised, they play with their friends, the competition is local - no travelling to Pennant Hills or Sutherland. I stay with the club because hockey has been my passion and Glebe is where I found my home in the sport ... I have much to be grateful for. The club is at an existential crossroad though and I don't have much confidence in its capacity to survive the challenges that the sport itself faces... ' (non-playing member)</i></p>
	<p>86% of our members tell us our Club's purpose is being met</p> <p><i>'I enjoy the inclusivity and the way the club supports all grades' (men's player)</i></p> <p><i>'The committee is open and work for their members what is best for the club' (non-playing member)</i></p> <p><i>'Sense of community' (women's player)</i></p>	<p>14% (11) tell us no, it's not</p> <p><i>'We need to get back to basics of doing what we do well - being a community club, not a performance club. I think we try to appease every single person in the Club, rather than sticking to our values, what we do best, valuing the people that make an impactful contribution (aren't just in it for themselves)' (women's player)</i></p> <p><i>'I don't think we are "modern day" enough. I think we could be more modern' (women's player)</i></p>

Survey Data and Sample Verbatims		
Player Experience	<p>90.3% of Juniors that transitioned to Seniors this year tell us their experience has been positive</p>	
	<p>82% of all players tell us they felt team selections were fair and transparent</p>	<p>17.4% (8 players) said that selections did not meet their expectations, of which 5 players identify as GDHC women players</p> <p><i>'Lack of transparency, communication and ongoing feedback to players' (women's player)</i></p> <p><i>'There were so many women's selections and "the selector" was barely there. It seemed like it was all for appearance. People who got selected barely played in the trials and got handed spots.'</i> (women's player)</p> <p><i>'Whilst it met most expectations, the only disappointment is that some players don't appear at selections, however, still make a high level team (referring to women's)' (women's player)</i></p>
	<p>36.8% of all players attend every training session without fail, whilst 50% attend every session possible</p>	
	<p>87.7% of all players tell us training provided met their needs</p>	<p>12.3% (8) tell us no, it did not</p> <p><i>'Training this year, though was great for skill development, did not translate to improvements on game day. It was disjointed and training often felt "in isolation"' (women's player)</i></p> <p><i>'Combined Sydney League teams training means it had to fit the lowest common level/skills. This deters attendance for those who want to train at their level and with their team. Can't rely on players to run general, one size fits all training sessions ... need to focus on teams' (men's player)</i></p> <p><i>'There is not much training catered to goal keepers' (women's player)</i></p> <p><i>'Field space at training meant it was hard to set up drills to achieve certain targets' (women's coach)</i></p>

Survey Data and Sample Verbatims	
Training Venue	<p>77.6% trained at Cintra</p> <p>35.8% (24) of all players trained at The Crescent, Thursday evenings</p> <p>6% (4) trained at Kingswood, Thursday evenings</p>
Comms	<p>88.8% of our members tell us they are pleased with communication content and frequency of Club communications</p> <p><i>'The communication channels the club now operates are fantastic. They are informative, vibrant, polished, and look very professional. This has been a huge improvement from years gone by. The effort put into enhancing these channels is clearly visible, and it's made staying connected with club events and updates much easier and more enjoyable for everyone involved'</i> (men's player)</p> <p><i>'The GDHC's communications in 2024 were excellent. The more information that is widely disseminated, the better. It will provide education and pleasure and help keep Club Members engaged. Team selections could even be distributed to all GDHC Members'</i> (non-playing member)</p> <p>11% (9) said no</p> <p><i>'I'd like to hear more about how all the junior's teams are doing each week (SEHA and Metro comps)'</i> (junior parent)</p> <p><i>'More regular updates'</i> (non-playing member)</p> <p><i>'The President's mailouts are too corporate, contradictory and difficult to read. The Instagram social media is excellent. It's been great to get the team lists and results each week for seniors and great to see the juniors enjoying their hockey. I find the Team GDHC Facebook less interesting. I've also missed being included on the women's weekly email this year'</i> (non-playing member)</p>

2024 Turf Report

This season marked a significant milestone in the history of the Glebe District Hockey Club with the players able to access a synthetic field only a few hundred metres from Jubilee Oval.

It has been fantastic to see juniors training down at the Crescent Field and our younger age groups able to host matches on the new field.

The pitch has also proved extremely valuable for senior players, providing them with an opportunity for a second formal training session as well as allowing individuals to dedicate time to hone individual skills.

Personally it was a surreal feeling stepping onto the turf for the first time, something that I have been waiting more than 30 years to do. Equally it has been just as enjoyable being able to have dinner with club members back under the arches post-training.

A huge amount of thanks must be paid to members and volunteers who over the decades have worked tirelessly to push for an artificial surface in Glebe, particularly Les Wark and Sue Heath who over the last few years have seen the current field through to completion. The Club current and future players owe you a debt of gratitude.

The Club is also extremely appreciative of the City of Sydney, who constructed and manage the field, for having the vision to approve the turf. The CoS have also been very helpful in making adjustments to the field and surrounds to support our hockey needs as we continue to navigate initial use of the field.

Having a turf in our heartland will be crucial to maintaining an active presence in the local community, helping the Club to attract and retain junior players. The availability of the turf to all players will also enable us to expand our training and playing options for both junior and senior members. It is a crucial step in providing players with the facilities to provide every player with the opportunity to develop their skills and technique to be the best version of themselves.



The inaugural GDHC Summer Competition is just one of the new activities the Crescent Turf enables

While the new field is a valuable asset, the pursuit of a full-sized synthetic field in Glebe or its surrounds continues.

We continue to engage with local council representatives, other sporting groups in the community and local MP Kobi Shetty for a full-sized field.

In October of this year, the Inner West Council completed its community engagement survey – [Planning for Rozelle Parklands](#) – with feedback considered from surrounding sporting clubs, including Glebe District Hockey Club. The survey gathered community feedback on a preferred location for an all-weather sporting field in the area, as was previously promised by the NSW Government as part of the WestConnex project.

Sites included for consideration as part of the survey included Easton Park, Leichhardt Number Oval No.2, Waterfront Drive (Callan Park) and Balmain Road playing field (Callan Park).

A number of applicants made the case for a multi-purpose all-weather synthetic surface and the feedback will be incorporated into Council's revised Master Plan for the area. We will continue to advocate for field hockey to be included in all future planning.

It remains to be seen whether the Council will pursue an artificial surface as a result of this survey. In the interim we will continue to explore other avenues for full-sized turf in the Glebe area and its surrounds.

While I am realistic about our prospects I am also optimistic that through our use of the Crescent Turf, the Club will be able to provide further proof the provision of a full-sized turf for hockey in the area should be made a priority.



A great sight: Spectators enjoying Saturday morning U10s games at the Crescent Turf

2024 Grant Applications

Towards the end of 2023, Harry Wark, Ian Paterson and I (convenor) formed an informal Grants committee for the Glebe District Hockey Club (GlebeDHC) in collaboration with the GlebeDHC Board. We aimed to explore and apply for various grant opportunities to support the Club's development.

Grants are available through local, state, and federal governments and charitable organisations. The focus of the committee was to secure three specific grants:

- 2023 Australian Sports Foundation Active Kids Grant** — Active Kids Grants are available for volunteer-run community clubs and organisations with members aged 20 or younger. Grants will be awarded through free sports equipment and on-field or training uniforms.
- Local Sport Grant Program (LSGP) 2023/24** — Aimed at purchasing equipment required for training and playing hockey, directly linked to providing ongoing participation opportunities in NSW sports.
- Community Building Partnership 2023** — Project title: Glebe District Hockey Club Clubhouse Renovation.

The process of applying for grants is complex. I must thank Harry and Ian for their collaborative efforts throughout the grant applications, from crafting the wording to understanding the specific criteria for each submission.

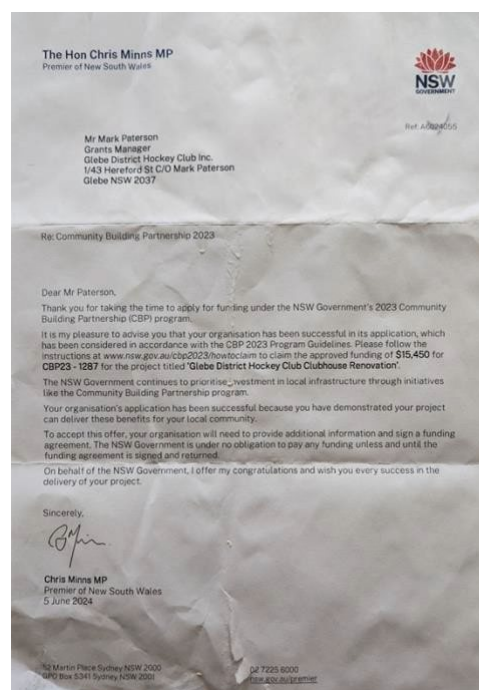
Unfortunately, we did not secure the Active Kids and Local Sport Grant Program funds. However, we learned valuable lessons from these submissions and will apply this knowledge to our 2024 grant application efforts.

We were successful in securing funding from the **Community Building Partnership 2023** grant to support the Clubhouse Renovation project.

This grant will enable the Club to upgrade our clubhouse equipment, including purchasing a coffee machine, a big-screen TV, user-friendly stackable chairs and tables, a new BBQ, and funds allocated for painting. There is also exciting potential for a GlebeDHC mural.

With the Clubhouse increasingly being used after junior and senior training/s, hosting events like junior discos, Olympic Hockey Nights, the Arthur Stubbs Foundation, the GlebeDHC Junior Carnival, and the Junior Presentation Evening, and hopefully soon as a venue to watch and review games, funding to support upgrades will be essential legacy investments that the whole club could enjoy.

On behalf of club members, I would like to thank local MP Kobi Shetty for her support in securing the grant. Ms Shetty has been actively engaged with the club since becoming the local member and her continued advocacy for the club is greatly appreciated.



If any members are interested in joining the informal Grants committee, we always seek more volunteers to help keep an ear out for potential grant opportunities. The work can be done from home, and submissions are made online. Close collaboration with the GlebeDHC Board is required to identify worthwhile equipment or projects to pursue. Please feel free to approach me directly if you want to get involved.

On behalf of Harry Wark, Ian Paterson and the GlebeDHC Board, I am pleased to present this Grants report for the 2023/2024 season.

Communications Report



Communications Director
Carolyn Pitt

One more year done! And what a big year it was.

With the Club continuing to grow, and having much to talk about this year, communication was more important than ever. We had a lot of good to share, and some tougher conversations also, and the calendar didn't always work in our favour, but I hope we all can feel everyone is just doing their best.

Once again, for me it's been a privilege as Communications Director to get to know so many from across the Club, I've loved hearing and sharing everyone's hockey stories, and seeing people come together as a community.

As already covered in the [President's Report](#), there was much going on from an activities and event perspective. It was great to see everything, from Clubhouse weekly bbqs and the Juniors disco, to the long-established Briars Derby Day and newly minted Sutherland Club Day, to the off-season Social Summer Comp and GDHC Fitness challenge. I can't wait to see what more we can achieve next year.

Social Media

Building on last year's social media focus, we've grown both our Facebook and Instagram followings by approx. 9%. And we're now recognised by shunt.com.au in the **top 10** of NSW/VIC/ACT hockey clubs both in terms of social media post volume, and for Facebook 'Like' reactions – up from 9th place last year (and again behind only Ryde Hunters Hill in the Sydney region). Considering that the size of our Facebook reach is only 25th, we're certainly punching above our weight!

A large part of our uplift this must be attributed to the hard work of Myf Waddell, who in 2024 has driven a strong Juniors presence on our Instagram and Facebook pages through her enthusiasm – and talent for making reels. Thank you, Myf.

Our exclusive Club Facebook group, [Team GDHC](#), continues to grow following its launch in 2023, providing a social channel that everyone in our Club can contribute and have two-way conversations. We've seen great examples of its use, including:

- Publicising Member-led initiatives (from the GDHC Fitness challenge to the Women's collaboration information session)
- Shout outs for lost property (and helping them be found!)
- Sharing memories of past GDHC events or achievements
- Letting others in the Club know of things that might be going on in our community – both in hockey and beyond!

Love to see more of this in 2025 – get amongst it.



As always, to ensure our **Glebe Hockey Facebook** and **Instagram** pages are as active as possible – we need you! Please do continue to share photos and videos with us: you can DM us on either platform, or simply tag the Club in your own posts and stories so we can reshare.

We'll keep trying out different kinds of content to keep it lively and interesting – please be patient with those posting if things aren't quite right, and, if you are keen to be a post-er, get in touch by DMing us!

Strengthening our communications into 2025

We know, and have heard through the Club Survey, that getting dates and messages out in a timely, transparent and accurate manner is highly appreciated, and can at times be challenge and frustration.

While there will always be things out of our control – weather events, plans usurped by larger events – we're committed to doing all we can to ensure timely information is shared. We'll be looking to initiatives like a master Club calendar for visibility of key dates throughout the year for early notice, and will investigate WhatsApp broadcast channel, knowing that WhatsApp is the channel most Club members pay attention to.

We're also looking to continue to grow events in 2025, for variety that can get even more people involved. Please note though, no need to wait for 'the Club' to organise smaller informal events – use channels like Team GDHC or your team WhatsApp chats to get them going!

Many hands make light work

It can't be underestimated how much work goes into communicating throughout a club as big as Glebe. And while I am not standing for the Communications Director role in 2025, I will still be able and willing to contribute where I can, and I'd encourage anyone who'd also like to, to get in touch at communications.director@glebehockey.org.au

Whether it's creating content for social media, posting it; taking photographs managing our website (it's due a refresh!); driving events or simply helping out at them – the more the merrier!

I'd like to give a shout out to graduating Junior Rupert Hughes and GWD1's Erin Burns, who between them have snapped countless photos throughout the year, giving the teams lucky enough to be shot by them lasting memories to look back on.

And special mention of Erin, who took the call to be our official Senior Presentation Night photographer – the most glamorous photographer we could ask for!



Finally, a huge thank you to a couple of key people who were behind a lot of the events and communications presence this year – thanks again, Myf Waddell, and thanks as always Mon Bordignon and Sue Heath for all the many hours and effort you have put in.





Administration Report

Administrative Director
Ellen Kennedy

Entering my first year as Administration Director, I initially underestimated the role's day-to-day demands. Although I have extensive experience in volunteering, having held significant roles in sporting clubs and P&Cs, I assumed my duties would primarily involve responding to emails and taking minutes. However, I quickly discovered there was much more to it.

When I began writing this report, I reflected on the various tasks that occupied my time throughout the year. While documenting monthly Board and Collaboration Committee meetings and responding to numerous emails kept me busy, my responsibilities extended far beyond these activities.

My primary task this year was ensuring compliance with all policies and procedures, which included applying for a Liquor License. Navigating the numerous requirements and paperwork was challenging, but I was pleased to secure the license for our Clubhouse events.

Another significant responsibility was maintaining a register and validating Working With Children Check numbers for all coaches, managers, and support roles across both Junior and Senior teams. I appreciate everyone's timely cooperation in providing these details.

Despite a thorough handover, I realised there were no documented processes for many tasks. To streamline future operations, I created step-by-step guides to help ensure these tasks are as seamless as possible going forward.

The Administration portfolio may not be the most glamorous, but I have learned a great deal this year. I am grateful for the guidance and support of fellow Board members and everyone who contributes to the club's daily operations.





Development Report

Katrina 'Shorty' Cochrane
Development Director

2024 presented a fantastic opportunity for our Junior Development program to be the core focus of continuing to develop the growing number of juniors in our club. Each year, our development program continues to expand allowing multiple development opportunities throughout the season with our Juniors developing their technical and tactical skills.

The season commenced with our pre-season clinics for our U10-U16 Junior players under the guidance of an experienced coaching team of senior players and coaches. It also allows us the opportunity to introduce beginning players to the club and welcome our current players back for the season preparation.

Junior pre-season fitness was again a popular way to commence the season with the hard working juniors participating in a variety of strength and conditioning sessions to help develop their endurance, speed and agility to support their on-field performance.

School holiday clinics continued throughout the year, with the bonus of us using the new crescent pitch. We were in a position to provide on-field skills as well as the opportunity to utilise Jubilee oval. We combined off-field fitness activities as well as tactical analysis sessions for our older Juniors.

The highlight of the development program was inviting our U14 and U16 Metro players to participate in our weekly accelerator program at the new Crescent pitch. The local pitch has increased the number of participation for this specialised program which targets technical and tactical skills, focusing on critical elements that can help develop the participants' individual game, whilst increasing hockey awareness. The success of the program is determined by the contribution of our senior players who volunteer their time to help our juniors develop their skills while also building a connection with our junior players as they transition to the senior programs. This is an extremely invaluable experience that we are so lucky to have available in our community club.

In 2025, we will continue to enhance our Junior Programs with some new and exciting development sessions being created which will also include opportunities to help support our senior women and men. The additional Thursday training sessions available for all our senior players has also increased in numbers throughout 2024, so we are looking forward to having numbers continue to rise in 2025.

As successful as our development programs are, they are not possible without the generous support from our senior players, coaches and life members. There are so many great people in our community that are always happy to put their hand up to help our juniors continue their growth and development. We will see the expansion of the Development Committee for the 2025 season, so if you are keen to get involved, I would be very grateful for your help. I am also keen to hear more about what you need and how best we can facilitate that so please do not hesitate to reach out and connect with me.

I hope to see you in late January when we kick off our very popular fitness sessions at Jubilee Oval.



Junior's Director
Tara Taylor

Junior's Report

The 2024 playing year was an excellent season for Glebe Juniors, defined by major changes that are already shaping our future. With the introduction of new uniforms, the eagerly awaited Crescent Turf, and the statewide shift from odd to even year age levels, we managed three significant changes at once! Amidst all this, we also celebrated tremendous success, with six of our Junior teams making the finals, four progressing to the Grand Final, and three of them claiming championship titles in their divisions.

You can read the full **Glebe District Hockey Club 2024 Junior Annual Report** on our website at:
<https://glebehockey.org.au/club-history/>

Significant Developments

This year, Glebe Juniors transitioned to fielding teams in the U10, U12, U14, U16, and U18 divisions, replacing the traditional U9, U11, U13, U15, and U17 structure. The shift, implemented by our playing associations in early 2024, required significant communication and adjustments, but thanks to our dedicated team managers and the support of parents and families, the process was remarkably smooth.

A highlight of this shift was the emergence of a strong U10 SEHA competition, where Glebe fielded three teams out of 7. Glebe continues to lead in this age group, showcasing the depth of talent and development within our club at this youngest competition age-level. It was particularly exciting to see two of our U10 teams reach the Grand Final and both win – with a draw after extra time. We could not have asked for a better outcome in a Glebe v Glebe Grand Final.

Additionally, we took the unique opportunity this year to field a second U16 team in the Metro competition, due to the strong retention of players from 2023 (who did not progress to the next age-level due to the age-level change). This allowed more players the opportunity to experience the higher level of competition, which we believe will contribute to their long-term development and to the future of our club. Special thanks to Ken Wark, who led the U16 Glebe Fire Metro Team, helping them to grow and develop in this competitive environment.

The change in age-levels also meant our U14 Metro team included players who were all completely new to the Metro Competition. Usually about half the players on a Metro team have had some prior experience of the Metro Competition. As a result, this group experienced an enormous learning curve, however, they kept up their spirit and kept fighting and were a much better team by year end. Thank you to Mack Noller, their coach, who was so committed and persistent in his development focus.

Crescent Turf – A Game Changer

The opening of the Crescent Turf in April was another landmark achievement for our club. This facility has become a home ground for our U10 and U12B teams, giving them the opportunity to play on both Jubilee Grass and Crescent Turf. We also hosted finals games here, marking the first time in many years that Glebe was able to do so. This new turf is a crucial part of our club's expansion, providing our Juniors with more access to top-quality facilities in the local area – many have told me they are now able to practice more! We can't wait for the new summer comp to begin.

Development Programs

Our focus on development continues to be a cornerstone of our success. This year, we once again ran a six-week pre-season Development Academy, ensuring our teams were ready to hit the ground running. For the third year, we also offered an additional 12 hours of Development Academy sessions during school holidays, along with weekly Junior Fitness sessions at the start of the season.

In 2024, we expanded our Glebe Junior Accelerator program to include U14 Redback players alongside the U16 (with U18s joining seniors mostly). This program targets technical and tactical skills for players aiming to transition to our Senior Men's and Women's teams. The fast-paced sessions, held mostly at the Crescent, focused on key elements to improve individual skills and overall game awareness.

Huge thanks to Development Director Katrina Cochrane, whose tireless efforts continue to make these initiatives a success.

Representative Success

As you'll see in the full Junior Annual Report, 2024 was another positive year for our representative players. Many of our Juniors took part in SEHA teams, and we have numerous players currently trialling for the indoor representative season. Their commitment to improving their hockey, forming connections within the hockey community, and playing more games is commendable. We also had several players selected for State Teams and Squads, an exciting milestone for both the players and our club.

A Club of Volunteers

Glebe Juniors runs entirely on volunteer efforts, and it's thanks to these contributions that our club thrives. I want to extend my deepest gratitude to all of our volunteers.

Firstly, I'd like to mention our incredible coaches. This year they were all either current Senior players or highly experienced retired Glebe or Senior players. Their knowledge and passion for the game have made a profound impact on our Juniors, helping to inspire the next generation.

Our team managers have also been outstanding, handling the logistics and communication that make every game and training session run smoothly. Thank you for your dedication and hard work.

A special mention goes to Peter Bestel, our tireless Juniors Umpires Coordinator. With the increased number of Metro teams this year, Peter went above and beyond to ensure every game was covered. His efforts are invaluable, and we couldn't have done it without him.

Building Our Community

Club President Sue Heath has done an exceptional job managing the Clubhouse and building community spirit at the Clubhouse during home games and training this year. With the help of a new team of Clubhouse Managers, many of whom are older Juniors, Sue has ensured that our Wednesday and Saturday BBQs were a regular feature, fostering camaraderie and connection among players, parents, and coaches. Her work behind the scenes is vital to the running of our club, and I cannot thank her enough.

Teamwork makes the dream work

I'd also like to acknowledge the many administrators and volunteers who work tirelessly behind the scenes, including:

- Myf Waddell for planning a fantastic social media calendar
- Our Communications Director, Carolyn, for her support with all sorts of Juniors promotion over the season.
- Jill Jeremy for supporting the production of this report!
- Justine Smith for managing substitutes and assisting with SEHA roles

- The wonderful Legend who coordinated our ball person program, 100 games and match statistics and not to mention coordinating a fantastic Juniors Olympic games event
- Jen Wood for managing match cards and helping wherever needed
- Ramona Batchelor for her coordination of SEHA photos and additional support
- Katrina Cochrane and the team of coaches and senior players for supporting the Development Academy and various Development strategies outlined above.
- Mark Paterson for coordinating the U10 division coaching
- Nic Glass for undertaking other aspects of U10 coordination
- Our Minkey program leaders, Michael Boyce Monforte, Stephanie Boyce Monforte, Amanda Chivers, Harry Wark and Gab Paterson, for their tireless work with our youngest juniors, as well as other Minkey coaches who assisted across the year
- Ian Foster for again managing goalie kits
- Maureen Paterson, Jess Kennedy and others for arranging the Junior Disco!
- Nathan Marris and Garry Ng for taking on the BBQ at the Clubhouse Olympic games event
- Kevin Heath for his ongoing and regular support with catering at Club events
- Henry, Daisy, Cate, and Clark for managing the Wednesday canteen
- All the many other volunteers which pitched-in in other ways across the year. We extend our heartfelt thanks to you all.

Finally, a big thank you to the GDHC Board for their unwavering support of our Junior players, especially as they transition to Seniors.

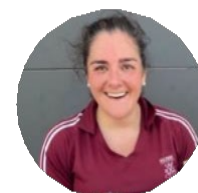
Farewell to 2024 and Hello 2025

To all our Juniors – congratulations on your efforts this year. Every Junior should be proud of their achievements and development this year whether their team won or lost. The club and I are immensely proud of your progress, both as teams and as individuals. The conversations I hear about how far our teams have come and how much players have improved are a testament to your hard work and dedication. Above all we are a community, and your spirit and respect for each other is great to see.

With strong numbers in Juniors, a growing development program, and the new Crescent Turf, 2025 is looking like another exceptional year for Glebe Juniors. The combination of growth, development, and community spirit is what makes Glebe so special. Thank you to all players, parents, coaches, and volunteers for your contributions to this year's success. I look forward to what we can achieve together in 2025.



Women's Report



**Women's Director
Melissa Newton**

As we reach the conclusion of another exciting and challenging season, I want to take a moment to reflect on the journey we have experienced as a club. Our trials this year were extremely successful with over 120 players placed into seven of our teams – we had returning players, players who played for other clubs and players who hadn't picked up a hockey stick in a while. This year was different where a selection process was introduced with external selectors. This proved successful in picking the teams, the main aim was having coaches' input for the teams.

This year has been one of growth, resilience, and achievement, both on and off the field. We've witnessed incredible individual and team performances, and our collective commitment to the sport has never been stronger. Our club has continued to thrive thanks to the hard work, dedication, and passion of every player, coach, volunteer, and supporter. Together, we have overcome challenges, celebrated successes, and strengthened the bonds that make our club not just a team, but a community.

I am incredibly proud of what we have accomplished this season, and I'm excited for what the future holds for GDHC. We are in a great position, with continued teamwork and support, we are ready to build on this success in the seasons to come.

Thank you coaches and managers

Our coaches have been the backbone of our team's successes. They have not only imparted valuable skills and tactics but also fostered a positive and motivating environment for all players. Their dedication to player development, from beginners to seasoned players, has been evident in every training session and games. The coaches have displayed an unwavering commitment to helping each individual grow, instilling a sense of discipline, resilience, and teamwork that will serve our players for years to come.



Some of our wonderful coaching team: Glenn Lim (SEHA), Clare Prideaux (ML2), Corrina Aitken (ML1), Ken Wark (ML2 assistant coach), Kate Alexander (ML3), Jake Ribarovski (ML6), and Doug Allison (ML4)

We also rely on our team managers, whose organisational skills have been nothing short of exceptional. From managing weekly team availabilities, to ensuring the smooth operation of match days and creating a lolly roster, the manager's work behind the scenes has been instrumental in allowing the players and coaches to focus entirely on the game. Their attention to detail (even with the occasional coffee stain on the match card) and calm under pressure has ensured the team's operations ran smoothly, regardless of the circumstances.

	Coach	Manager
ML1 (GWD 1)	Corrina Aitken	Andrew Burns
ML2 (GWD 2)	Clare Prideaux, Ken Wark & Phoebe Kershaw	Jen O'Toole
ML3 (Glebe 1)	Kate Alexander	Chantelle Hughes
ML4 (Glebe 2)	Doug Allison	Lisa Bonhote
ML5 (Glebe 3)	Michael Monforte	Steph Boyce
ML6 (Glebe 4)	Jake Ribarovski	Amelia White
SEHA (Grade 2)	Glenn Lim	Amanda Chivers

Thank you, Women's Committee

Many hands make light(er) work, and without the Women's Committee, we wouldn't even be able to get to game day. These volunteers work tirelessly behind the scenes, for which we're truly grateful.

A special mention must be made of Monica Bordignon, whose contributions to the success of the club have been truly endless. Monica has played an integral role in the club's operations, offering her time, expertise, and unwavering support in countless ways. From assisting with team coordination and organising social events to helping with fundraising and ensuring that the players have everything they need, Monica has been a driving force behind the scenes. Her dedication to the club's success, combined with her ability to always go above and beyond, has made a remarkable difference in my time as the Women's Director.

Role	Volunteer
Higher Club Captain	Monica Bordignon
Lower Club Captain	Gemma Mackenzie-Booth
Women's Administrator	Hannah Yeo
Register	Olivia Edwards
New Players Coordinator	Michelle Hancock
SEHA Representative	Rachael Beckett
Umpire Coordinator	Emily Williams

Results

We're proud of our seven teams this year from ML1 to ML6 and our SEHA team who were promoted to Grade 2 of their competition and making the finals. A special mention goes to our ML6 team who only managed to lose one game during the normal round games and scored 54 goals for the season.

Team	Win	Draws	Loss	Points	Place
ML1 (GWD 1)	6	3	7	21	6 th
ML2 (GWD 2)	3	3	11	12	9 th
ML3 (Glebe 1)	8	4	6	28	6 th
ML4 (Glebe 2)	6	4	8	22	7 th
ML5 (Glebe 3)	4	2	12	14	9 th
ML6 (Glebe 4)	14	3	1	45	2 nd
SEHA (Grade 2)	10	0	6	30	2 nd



Great to see some of our young (Junior!) guns making their Women's high grade debuts: Miki Cooper and Siala Cochrane both debuted in GWD ML2 this year.

Representative honours:

We are so proud to have several players affiliated with Glebe representing New South Wales and Australian teams.

Refer to the [ML1 Report](#) to read about the amazing field representative achievements of our Glebe and GWD Women.

And in the offseason, the Indoor achievements are equally inspiring:

Australian Indoor Team:

- Litiana Field
 - Erin Burns
 - Caitlin Burns
- Competed at the 2023 Indoor World Cup



Anneliese Cullen and Jess Weatherall won silver for NSW at the U16 National Championships in April 2024

NSW Opens Blues

- Jemma Murray

NSW Open Shadows

- Lauren Rowe
- Holly Mills

NSW Under 21 State

- Jemma Murray
- Holly Mills
- Jess Weatherall

NSW Under 21 Shadows

- Amelia Cullen



Litiana Field in green and gold for the Australian Indoor team

Wrapping up

As we reflect on this season, we are already looking ahead to the future. The efforts and dedication from our coaches, managers, and the women’s committee have set a strong foundation for the next season, and I’m excited to see with the future brings for the Glebe Women.

As I’m stepping away after this season, due to pursuing future career aspirations, I would like to thank each volunteer for your commitment to the club, and for the positive impact you continue to make.

Thanks,
Mel



Just some of the many milestones celebrations in 2024: Jess Higgs (200), Alisha Middleton (150) and Carolyn Pitt (50), Tessa Bruin (200), Ally Catterson (50)

Metro League 1 (ML1) GWD Report

First Grade

ML1 Coach
Corrina Aitken

Team	Played	Wins	Draws	Losses	BYEs	For	Against	Diff.	Points
1. M/Liverpool 1	16	12	1	3	0	55	20	35	37
2. N/Dist Strikers 1	16	12	1	3	0	44	18	26	37
3. Sydney Uni 1	16	11	1	4	0	47	19	28	34
4. RHH 1	16	10	2	4	0	53	23	30	32
5. UNSW 1	16	10	1	5	0	50	16	34	31
6. GWD 1	16	6	3	7	0	34	24	10	21
7. Briars 1	16	3	0	13	0	13	69	-56	9
8. GNS 1	16	2	2	12	0	13	59	-46	8
9. Raptors 1	16	0	1	15	0	8	69	-61	1
10. Bye	0	0	0	0	0	0	0	0	0

2024 was another great year for ML1. We had an outstanding season, showcasing some exceptional skill, teamwork and sportsmanship. We ended the season with more points with more wins compared to the 2023 season, and 4 of our 6 losses were by 1 goal and 3 of these occurred in the last 2 minutes of the game. The girls demonstrated incredible dedication and perseverance with large numbers every week at training and player availability for games throughout the entire season.

The girls improved exponentially, and many were rewarded with selection accolades. Notable achievements include:

- Taqira McGrath – Canberra Chill
- Clare Bosman, Maya McGrath, and Annie Buckley – extended NSW Pride Squad
- Litiana Field – Canberra Chill extended squad
- Clare Bosman and Rylee Miller – NSW Country and Australian Country
- Jess Weatherall and Anneliese Cullen – NSW under 16, Australian under 16
- Jemma Murray – SA under 21s
- Maya McGrath – ACT under 21s.

We have had the opportunity for many players from ML2 to play up into ML1 making their GWD ML1 debut, forging a big impact from game 1.

I have an amazing off field staff for which myself and the girls are very thankful. Andrew and Jen are a formidable team that keep the process streamlined in the background.

Clare was a superb brains trust helping me on the sidelines every week, and Clare in addition to Ken, Bel and Kate provided outstanding coaching knowledge which enabled players to grow and develop over the season.

What I love most about this group is that we prioritise the same core values. On the field we are fiercely competitive and driven, whilst still promoting inclusivity and ensuring we are supportive of one another regardless of age, skill level and background. As a group we have helped to improve each other's skills levels and provided an environment for players to reach their full potential. As we look into the future, I am excited to build on this season's success and continue to promote what we have created.

Cheers,

Corrina



GWD ML1:

Back row (L to R): Annie Buckley, Jemma Murray, Maya McGrath, Corrina Aitken (Coach), Taqira McGrath, Anneliese Cullen, Jess Weatherall, Erin Burns

Front Row (L to R): Jemma Laverty (GK), Rylee Millar, Caitlin Burns, Amelia Cullen, Lauren Rowe, Litiana Field, Clare Bosman, Holly Rasmussen

Absent: Imogen Fowles

Metro League 2 (ML2) GWD Report

Second Grade

ML2 Coach
Clare Prideaux

Team	Played	Wins	Draws	Losses	BYEs	For	Against	Diff.	Points
1. UNSW 2	17	15	2	0	0	56	10	46	47
2. Sydney Uni 2	18	10	4	4	0	40	21	19	34
3. RHH 2	18	10	3	5	0	33	21	12	33
4. Manly 1	18	9	5	4	0	51	32	19	32
5. M/Liverpool 2	18	10	2	6	0	38	22	16	32
6. Briars 2	18	7	5	6	0	29	24	5	26
7. N/Dist Strikers 2	18	5	3	10	0	29	40	-11	18
8. Mac Uni 1	18	5	3	10	0	27	42	-15	18
9. GWD 2	17	3	3	11	0	15	36	-21	12
10. Raptors 2	18	0	0	18	0	5	75	-70	0

In 2024 the Glebe Western Districts (GWD) collaboration ensured that Glebe women had access to a pathway, quality training and competitive match opportunities in the Sydney women's premier competition from ML6 to ML1, equivalent to our Glebe men.

Through the ML2 team, we were able to offer our Glebe women and talented Glebe junior members pathway and performance opportunities with integrity, flexibility and competitive selection resulting in:

- **Retention** of Glebe Club players and Glebe Club memberships:
 - There was no need for aspirational Glebe female players to move Clubs to play competitive hockey in 2024
 - Glebe players choosing to continue playing with Glebe as playing ML2 members included Miki Cooper, Sarah Brine, Maddy Scott, Abbie Sen, Val Alonso and Molly Busch who were outstanding 'week in week out' contributors.
- **Growing** the number of players playing in higher grades through selection eligibility across all grades from ML6 to ML1 in 2024, with 30 of our Glebe/GWD women playing across grades from ML4 to ML1. ML2 statistics for pathway progression in 2024 included:
 - Four ML2 players debuted/played in ML1
 - Nine ML3 players debuted / played in ML2
 - Two ML4 players debuted/played in ML2.
- **Improvement** of players through quality training and coaching at our 'home ground' Cintra:
 - Glebe ML2 players were required to train at Cintra as a part of the broader Club Tuesday training night. While it was not compulsory to train on a Thursday night at Western Districts 'home ground' for ML2 players, many Glebe players took up the opportunity to access an additional training session on a full field with the ML1 and ML2 coaching team and ML1, ML2 and ML3 players.
- **Improved** competitive performances on the pitch – a culture of team first:
 - ML2's team goal for the year was to be competitive in every match. Results in 2024 reflected great improvement with three wins, three draws and multiple narrow losses. In addition to our wins, a memorable draw against 2nd on the ladder Sydney University and narrow 1-0 losses to top 5 teams Ryde and Moorebank proved to be season highlights.
 - With a predominantly young team, ML2 player commitment to working hard for each other on the pitch was evident in all matches and players should be proud of their efforts positioning the team well for continued retention, growth and improvement in 2025.

Thank you to all players who contributed each week to a great ML2 season including Sarah Brine, Abbie Sen, Aimee Bishop, Alex Cullen, Catalina Lecaros, Chloe Dellenty, Ella Rowe, Evie Ryder, Hayley Bishop, Holly Mills, Miki Cooper, Molly Busch, Summer Knowles, Val Alonso, Corrina Aitken and Maddy Scott.

Special thanks to our Glebe ML3 and ML4 players who debuted and/or played with ML2 so well including Alisha Middleton, Emma Alexander-Prideaux, Jess Kennedy, Cate Heath, Olivia Cane, Monica Bordignon, Zoe Nisbett, Jess Higgs, Lou Tapsell, Siala Cochrane and Deanna Carscadden.

Many thanks to Jennifer O'Toole, our Manager, who worked tirelessly behind the scenes; Aaron our Glebe Coach Developer who shared terrific tips and insights; and the ML1 – ML3 Coaching Team including:

- Corrina Aitken (Australia Jillaroos and NSW PRIDE Physio; NSW U21 State Team Assistant Coach; former Hockeyroo Squad member and NSW Team member)
- Ken Wark (former Kookaburra Team member, Olympian)
- Belinda Brooks (former Hockeyroo Squad member and NSW Team member)
- Phoebe Kershaw (non-playing ML2 Assistant Coach)
- Kate Alexander (former SEHA U18/U16 Coach)

It has been a pleasure coaching ML2 this year, to be able to contribute to the **retention** of Glebe women at Glebe; **improvement** through the provision of quality training and development opportunities; **growth** through equal opportunity for our women to play premier league hockey and to promote a 'team first culture' has been a joy.



GWD ML2:

Full team list: Holly Mills (GK), Ella Rowe, Aimee Bishop, Hayley Bishop, Evie Ryder, Abbie Sen, Corrina Aitken, Molly Busch, Val Alonso, Catalina Lecaros, Chloe Dellenty, Alex Cullen, Miki Cooper, Summer Knowles, Sarah Brine, Maddy Scott.

Metro League 3 (ML3) Report

Third Grade

ML3 Coach
Kate Alexander

Team	Played	Wins	Draws	Losses	BYEs	For	Against	Diff.	Points
1. Sutherland 1	18	14	3	1	0	44	11	33	45
2. UNSW 3	18	11	5	2	0	50	15	35	38
3. SGR 1	18	10	1	7	0	39	21	18	31
4. Mos/Harbour 1	18	10	1	7	0	24	25	-1	31
5. Sydney Uni 3	18	8	4	6	0	29	21	8	28
6. Glebe 1	18	8	4	6	0	22	21	1	28
7. GNS 2	18	6	4	8	0	21	22	-1	22
8. N/Dist Strikers 3	18	4	4	10	0	26	42	-16	16
9. RHH 3	18	3	2	13	0	18	54	-36	11
10. Wenty 1	18	1	2	15	0	9	50	-41	5

It was a positive season for the mighty Glebe ML3 team. We narrowly missed a place in the finals, finishing equal fifth on the ladder with some credible wins against the top ranked teams.

Starting with gratitude

I am most grateful to those who work for, and support, this wonderful team. Mel Newton and Mon Bordignon are to be commended for their management of the Women's teams this year. They were always helpful, flexible and their behind the scenes work throughout the whole season made it easy for players to run on the field each week and coaches and managers to do their thing. Thank you, Mel and Mon.

Chantelle Hughes was an incredible manager, not to mention our highest goal scorer this season and last. Chantelle's courage to overcome some significant health challenges this season, support her teammates, volunteer her time, and model her trademark grit and determination on and off the field, was nothing short of inspiring.

The team benefited greatly this season from the coaching excellence of the talented bunch working with our ML1 and ML2 women. Training together on Tuesday nights, under the dedication of three former Australian players (Ken Wark, Clare Prideaux and Corrina Aitken) provided intensity, encouragement, challenge and reward for players. I am most grateful to this coaching group for the generosity to our team and the caliber of training offered to players in such a supportive environment.

Last but never least, I acknowledge Alisha Middleton as our outstanding captain. Sadly, this was Alisha's last season playing for Glebe. She has recently moved with her family to Brisbane and will be greatly missed. Alisha is a formidable defender, her timing, strength and precision to clear a ball out of defense is second to none, she regularly comes out of tackles with the ball neatly on her stick and she trains as hard as she plays, modelling everything good about our game and how to play it well to all around her. Thank you most sincerely Alisha for the years, time, support, skill, commitment and gutsy, yet elegant, hockey that you have given our club.

A cracking line up

The caliber of players in the ML3 team was as impressive as always and the diversity most welcome. Our defense was spearheaded but the highly capable and brilliant field communicator Ash Klimoski; well supported by Alisha (as above); Lynsey Askew whose deft stick work left us in awe many a time; and the

skillful Lauren McRae who is completely unflappable and constantly running. We welcomed Zoe Nisbet to our defensive ranks this season. New to Sydney and straight out of school Zoe fitted in immediately and her maturity and work ethic make her a player to watch for the future.

The 2024 players' player is worthy of her own paragraph. Jess Higgs earned this title easily because she is a game maker, a strategist, an encouraging teammate and she never ever stops running. Jess asks of her peers only what she demands of herself – total commitment – and she does so in the most generous and inspiring of ways. Thank you, Jess, for the standards you set and the effort you give.

Our dependable players in the midfield logged hundreds of kilometres this season, both in games and training. Lou Tapsell is as indefatigable in attack as she is in defense, not to mention a teammate and club member of great integrity; Emma Alexander-Prideaux brought her ability to run all day onto the field and we were constantly grateful for her skill and work rate; and we were always admiring of Olivia Cain's determination, ability, stamina and skill. These three played beautifully together and their work ethic was top shelf.

As a coach one always feels appreciative of those versatile players who can play in every position and can cope with any change in structure or role assigned to them. Carolyn Pitt is a classic example. She gives her all wherever she plays on the field, a strong attacker and a highly capable defender (not to mention all her volunteer efforts with such beautiful communication for the club). At the same time, Mon (as above) matched her off field efforts for the club with tireless performance on the field week after week – dependable, determined and consistent.

Our strikers worked hard, ran fast and were tenacious this season. It was great to welcome the very fit and fast Ashlee Ryan back to Glebe this season; to see the strength in Cate Heath in the circle with some lovely and powerful shots on goal; and the speed and finesse of Olivia Branson along the baseline was too good for many defenders who were left in her wake and she slipped past them.

Sadly, two of our most dependable favourites, Talia Morrow and Bridget Kelly, had short seasons with us in 2024. A broken foot in the early rounds made for a frustrating season for Talia and other complicated injuries of both feet made it difficult for Bridget to finish the season. We missed them both and look forward to them being back in full fitness next season. The efforts of two other players who through travel and interstate moves (Deanna Carscadden and Erin McCleave) could only play half a season for us belong on the record – thanks to both for excellent hockey and hoping to have you back.

Development opportunities

This season the movement between teams benefited players and led to high morale and camaraderie across teams. We welcomed the impressive juniors of Siala Cochrane and Emerson Bonhote into our ranks and both showed much promise; and we were thrilled to have Corrina Aitken's formidable tackle help us out against Sutherland. Nine players from ML3 had the opportunity to play up this season and relished the opportunity. This movement between our top teams, and the opportunity for ML3 to be inspired at training alongside ML1 legends like Litiana Field, made 2024 stand out from many previous seasons for the opportunities for our players in an encouraging environment.

My hopes for Glebe women in 2025 are that we all keep focused on what brings us together. The hockey was of good quality, the training was excellent, we provided a pathway that is equal to that of our men, our players are happy, and we have a lineup of volunteer coaches other clubs would be wrapping their arms around and holding tight. Let's not question the loyalty of Glebe women who found a way to play top hockey and to stay in the club they love, let's not risk losing them and let's stick with something that is working.

Well done ML3. You are an amazing bunch of diverse women who give your all every week and then some. You play with heart, and you have each other's backs. It was a pleasure.



ML3:

Back row (L to R): Olivia Cain, Zoe Nisbet, Louise Tapsell, Erin McCleave, Mon Bordignon, Alisha Middleton, Carolyn Pitt, Emma Alexander-Prideaux, Bridget Kelly, Cate Heath

Front Row (L to R): Olivia Branson, Lynsey Askew, Deanna Carscadden, Chantelle Hughes, Aisling Klimoski

Absent: Lauren MacRae, Jess Higgs

Metro League 4 (ML4) Report

Emily Williams & Hannah Yeo

Fourth Grade

Team	Played	Wins	Draws	Losses	BYEs	For	Against	Diff.	Points
1. Briars 3	18	13	2	3	0	59	13	46	41
2. UNSW 4	18	13	2	3	0	57	18	39	41
3. Manly 2	18	11	1	6	0	33	17	16	34
4. M/Liverpool 3	18	9	4	5	0	29	23	6	31
5. Mos/Harbour 2	18	8	6	4	0	31	19	12	30
6. Sydney Uni 4	18	8	3	7	0	30	22	8	27
7. Glebe 2	18	6	4	8	0	25	31	-6	22
8. Mac Uni 2	18	4	4	10	0	17	40	-23	16
9. GNS 3	18	2	3	13	0	18	52	-34	9
10. RHH 4	18	1	1	16	0	9	73	-64	4

What a year! We started off undefeated for the first four weeks, setting the tone for a season of grit, laughs, and plenty of field time. With each game, we inched up the ladder from our 2023 finish – a testament to both the team’s commitment and our scrappy, determined spirit.

With only six returning players from last year, we had to rebuild and find our rhythm as a team. Week by week, our lineup got sharper, our confidence grew, and we finished with a solid 6 wins, 4 draws, and 8 losses – an improvement we’re proud of!

At the back, our regular defense line – Emily, Shani, Hannah, and Jess in goal – kept things steady. Well, mostly steady. Without Shani, you could practically see the panic on Hannah’s and Emily’s faces! But when we were in sync, we held our ground, and Jess saved us more times than we could count. Our midfield crew – Anna, Zoe L, Zoe B, Cassie, Shorty, and Tessa – ran the show in the center, setting the tempo and keeping us on the attack. Up front, we relied on some fresh, young legs with Ayisha, Emerson, Ciara, and Siala driving the attack. Emerson even remembered to keep her stick down now and then for those crucial deflections!

The season wasn’t without its hurdles. European holidays put a strain on our numbers, and we had plenty of “musical chairs” moments, with players stepping into unexpected roles. A huge thank you goes to everyone who filled in and helped ML4 through these stretches. Special shoutouts to Alicia, Aoife WS, Carla, Caro, Cate, Erin, Floor, Jess H, Lilli, Liv B, Liv C, Lydia, Mon, and Steph – your contributions kept us going and made all the difference.

Another shoutout goes to our ML4 players who regularly supported other teams throughout the season. Whether they stepped up and scored for ML3 or supported ML5, their help and commitment to the club has been invaluable. Thank you to Ayisha, Emerson, Emily, Jess K, Shani, Siala and Tessa!

One of our season’s best moments was nearly taking down the table leaders, UNSW, in a nail-biting match that could have gone either way. And, of course, who could forget Doug’s weekly “Ted Talks,” where he really tried to get us to master aials (results were...mixed). When Doug took a break from us to go and trial for the US squads, Matt stepped in with fresh energy and dedication.

A massive thank you to Doug and Matt for guiding us, and to Lisa and Emerson for keeping the season organised and "mumagered". Another shoutout to Hannah, who managed so much behind the scenes for the club, and to everyone who cheered us on from the sidelines – your support made every game feel like a home game.

I, Emily, may have only been with ML4 a couple of seasons, but each year we've improved and we're inching closer to the top spot. So here's to 2025 – bring it on!

Before we wrap up our report, on behalf of everyone in the women's club and ML4 team, a massive thank you must be extended to Emily who coordinated the year-long effort of umpires for all GDHC women's Metro games and supported the SEHA league umpiring too. This is an invisible and thankless role but one that our Women's club could not function without – thank you Emily for your work in this space and for building the role into a strong space for next year's volunteers!



ML4:

Back row (L to R): Katrina Cochrane, Ciara Jarvis, Zoe Brown, Zoe Leuthard, Emily Williams, Jess Kennedy (GK), Hannah Yeo

Front Row (L to R): Lisa Bonhote (Manager), Shani Middleton, Anna Kepert, Cassie Townson, Ayisha Travis, Emerson Bonhote, Siala Cochrane, Tessa Bruin, Doug Allison (Coach)

Metro League 5 (ML5) Report Fifth Grade

ML5 Manager
Stephanie Boyce

Team	Played	Wins	Draws	Losses	BYEs	For	Against	Diff.	Points
1. Sutherland 2	18	13	4	1	0	46	10	36	43
2. Mos/Harbour 3	18	13	3	1	0	34	17	17	39
3. SGR 2	18	11	3	4	0	45	11	34	36
4. N/Dist Strikers 4	18	9	3	6	0	35	29	6	30
5. Sydney Uni 5	18	7	4	7	0	30	31	-1	25
6. Briars 4	18	5	6	7	0	23	23	0	21
7. Wenty 2	18	5	4	9	0	24	39	-15	19
8. Raptors 3	18	4	3	11	0	11	34	-23	15
9. Glebe 3	18	4	2	12	0	13	39	-26	14
10. RHH 5	18	1	4	13	0	9	37	-28	7

It was a tumultuous season for ML5 once again, with most of the team comprising of new players or Juniors coming through the women's teams – it was nice however to see some familiar faces scattered throughout for consistency.

After a win at the start, we had a tough go of the rest of the season coming up against some very strong sides, unfortunately affecting player morale. Thankfully, starting the year with 16 on the card allowed us to field a full team to continue developing and also hold our own against some of the top teams on the ladder and secure a few wins, sadly not enough to secure a high position overall.

Thankfully despite these setbacks, everybody aimed to remain as positive as possible even when we had challenges. Training was always had with many laughs, alongside some excellent development for the Juniors. There was some fantastic individual games and efforts amongst the losses, with some amazing goals from short corners, deflections and straight shots alike – alongside tireless defense work. When we finally gelled, we definitely did not look like a team at the bottom of the ladder. A tough season once again, but due to the ever-changing line up in ML5 this is to be expected.

ML5 will likely always be a 'development' style team, seeing many players from Juniors begin their season in Women's with ML5, and then moving on into higher grades once they gain their first season confidence.

Whilst it is sad to see so many players come and go each year, it's a bittersweet aspect of this grade level of women's hockey. If ML5 can maintain some consistency in their lineup in the years to come perhaps we will start seeing this pay off in the coming years.



ML5

Back row (L to R): Floor Beckmann, Claudia Otto (GK), Ellie Thorpe, Ashley van Damme, Renee Traves, Laura McGrath, Deanne Barnes, Alicia Van Gastel, Lydia Najdzion, Michael Monforte (Coach)

Front row (L to R): Sam Carson, Steph Boyce, Mia Carlsson-Hojland, Ella Tamir, Lulu Kerlake

Absent: Carla O'Donnell, Lilli Seebacher,

Metro League 6 (ML6) Report

Sixth Grade

ML6 Coach
Jake Ribarovski

2ⁿ in regular season – knocked out in semi final

Team	Played	Wins	Draws	Losses	BYEs	For	Against	Diff.	Points
1. Briars 5	18	15	2	1	0	60	13	47	47
2. Glebe 4	18	14	3	1	0	54	20	34	45
3. N/Dist Strikers 5	18	11	4	3	0	40	23	17	37
4. UNSW 5	18	8	4	6	0	32	26	6	28
5. Bankstown 1	18	8	2	8	0	27	25	2	26
6. Sydney Uni 6	18	7	4	7	0	20	21	-1	25
7. RHH 6	18	5	2	11	0	15	41	-26	17
8. Mac Uni 3	18	4	3	11	0	13	31	-18	15
9. SGR 3	18	3	1	14	0	17	42	-25	10
10. Mos/Harbour 4	18	1	3	14	0	8	44	-36	6

The ML6 2024 season was the second year I have had coaching this amazing group of women. In 2023, this group went out in the grand final, so goals were set at the start of the year to take things one step further. As with 2023, the year was a positive year filled with some highs and lows.

The ML6 team this year was not massively changed since last year, however there are some well-deserved shout outs to the new players in our team. ML6 was very lucky to have a junior goalkeeper come through in Aoife who has been immense at the back. For a Junior of only 14 years old, I was instantly impressed with Aoife's shot stopping ability as well as how well she communicated at the back to a senior backline. As with last year, seeing Junior players step up confidently and play well in our team was one of the highlights of my year.

We also had Christina come back into the side after some time off hockey. Christina was a great asset to the team, and I am very appreciative of how selfless Christina was with playing in multiple positions throughout the year to suit the group. We also had Jai join us as a new player who ended up taking out our players' player award. Jai, ever so calmly and casually, decided to let me know halfway through the season that she may have previously played as a striker and went on to score 2 of our best goals all season in the next game. A huge asset to the team. As well as new players, we were also strengthened by our Captain Liv coming back after becoming a mum last year.

The 2024 started off with a bang with as Liv, in her first game back, scored from 2 goals in 3 minutes as well as Mel scoring from a corner. Being up 3-0 in the first quarter of the season against a decent outfit in Ryde was a massive sign of what to come. In 2023, the team struggled to close off games and drew a lot of games. 2024 seemed to be a different year as we were closing off games and winning each week. There were points in my pre-game speeches where I didn't know what to say as I honestly didn't know how we could have improved from the previous week. After round 9, we finished the first half of the season in 2nd place and undefeated with wins apart from two draws to Briars and Strikers.

In the second half of the season, the girls continued to put in performances. This was highlighted with a win against Briars who were top of the table and probably one of the highlights of my season. Unfortunately had a loss to Strikers due to a cancelled game that we had to replay on a Tuesday night, but the girls quickly bounced back and secured a top two finish which was one of the goals of the season.

In the first week of the finals, we played the top team Briars in a game to take us into the semi-final. Briars are a very strong outfit that have a few handy players who recently played high grades which showed. Briars

quickly went 2-0 up and ended up the game with a 3-0 win. After the game, we all agreed that it wasn't our best performance and as we finished in the top 2, we had a second chance the following week.

The following week we played UNSW in a must-win semi-final. After losing to Briars the week before, I asked the girls for a reaction and it's safe to say this happened. Josie came out firing and scored a goal within minutes as well as hitting the post. Jai had a shot at goal which hit their full back but was not awarded as a stroke. Unfortunately, before half time, UNSW scored a goal against the run of play and then scored in the second half. It was one of those games where we had most of the possession, but the ball just did not land our way. The girls rose to the occasion and played very well, but it was not meant to be.

While it was disappointing to bow out in the semi finals after playing so well all year, it was still a fantastic year. Despite being a lower grade team, numbers in training were consistent all year, the effort was always 100%. I'm extremely proud of the group for everything we achieved this year. While the season didn't finish the way we wanted it to; I hope the team can take positives from such a great season with training and games.

A few thanks I would like to pass on:

- Firstly, thank you to Delilah Rodrigues for doubling up for so many weeks to give us some extra players up front. Your effort was appreciated!
- Thank you to Amelia White for being manager again this year. My job has been very easy with all the admin being taken care of so well.
- Thank you to Mel Newtown for stepping into the Women's Director role this year and for all your hard work with the team and for the whole women's club. A true club legend.
- Thank you to our team captain Oliva Edwards for leading such a great team again so well.
- Thank you, Monica Bordignon, for all the work with selection meetings, joining us for finals training and all the hard work you put in each week. Glebe is very lucky to have you!

Most importantly, thank you to the amazing group of women who I was lucky enough to coach this year. This team has made a big impact in the last 2 years of my life, and I have loved every moment of coaching. Hopefully next year, we can look to get back into the grand final and go one step further.



ML6:

Back row (L to R): Liv Edwards, Sian Morgan, Michelle Hancock, Amelia White, Josie Barron, Jake Ribarovski (Coach), Susan Kernot, Rosa Smith, Elena Hux, Gemma McKenzie-Booth

Front row (L to R): Christina DeBruin, Mel Newton, Kate Charge, Aoife Walsh-Sams (GK), Jaishri Morar

Sydney East Hockey Association 2 (SEHA) Report

Amanda Chivers

Seventh Grade

2nd in regular season – knocked out in semi final

Team	Played	Wins	Draws	Losses	Forfeits	BYEs	For	Against	Diff.	Points
1. UNSW 2 Black	16	11	2	3	0	0	42	9	33	35
2. Glebe 2	16	10	0	6	0	0	43	25	18	30
3. Easts 2	16	9	3	4	0	1	29	24	5	30
4. Dolphins 2	16	7	5	4	0	1	39	19	20	26
5. Sutherland 2	16	7	4	5	0	0	37	17	20	25
6. UNSW 2 Gold	16	6	4	6	0	0	20	18	2	22
7. Briars 2	16	0	6	9	1	0	17	41	-24	5
8. SUHC 2	16	1	2	12	1	0	6	80	-74	4

Fresh off a premiership win in 2023, the SEHA Slayers were keen to see what they could achieve as a newly promoted Div 2 team.

But tragedy struck in round one and the Slayers sustained two serious injuries, and in suffering one of the biggest losses in the team’s history the following week going down to Sutherland, it looked like the Slayers were in for a tough 2024 season. But, the team grew stronger and more unified under their returning Captain, Ally and the team overcame each adversity faced this season with their unrivalled team unity. New editions Meg, Chloe, and Adelle, along with reinforcements from ML5 (Renee and Steph) all helped our Slayers to slay another day.

And slay they did! The team maintained the top spot on the ladder for 17 weeks and finished the season second to Div 2 Premiers (and new rivals) UNSW Black. After a hard-fought finals series and more injuries suffered late in the season, our Slayers were ultimately knocked out in the finals to finish their season as bronze medalists. But given the tumultuous nature of the season and being a newly promoted team, to podium in their Div 2 debut was a phenomenal effort! The 2024 Slayers have overcome their early adversities and successfully slayed their way to a bronze medal win. What does 2025 hold? With this tenacious bunch, anything is possible!

Your 2024 SEHA Slayers:

Rachael Beckett – The team missed Rach this season and the comradery she fosters within the group. Wishing her all the best with her recovery and hope to see her back on the field soon!

Ally Catterson (Captain) – 2022 and 2023 Linda Tait trophy winner led the team’s striker line up yet again firing 20 goals into the backboard and ended the season on a high reaching her 50 games milestone.

Amanda Chivers (Manager) – the Slayer’s manager, counsellor and cheerleader. Amanda truly cares for her teammates and continued to play through injury to see out the season with her Slayers.

Kate Day – Kate is one tough defender but has proved she can hang up top with the forwards too. Bringing a few decades of playing experience, she mentors her younger defenders by teaching our new school players some old-school tactics.

Ellie Gibson – The team often forget Ellie is one of our youngest Slayers as she’s been with the team for longer than any other Slayer. She’s known for her fierce slap hits out of defense

Helen Gibson – Our bower bird and mother hen! Helen brings years of experience on the field to the team and there’s never a game where we don’t hear her daughter Ellie cheering her on from defense.

Zoe le Marinel – returning for her third season, Zoe brought her signature infectious energy to every game: enthusiasm and positivity week in week out.

Adelle Mitchell – Adelle showed incredible toughness in defense and her commitment to the team travelling all the way from Lithgow was exceptional.

Aoife Mullan – Our Irish lass! Aoife moved from the forwards to defense this year, learning an entirely new position. But no matter where she plays, Aoife always brings the vibes and laughs to the Slayers.

Trish Rebeiro – After struggling with injuries her first season back in 2023, it was great to see Trish get more of a run in 2024. She even scored her first 2 goals this season!

Delilah Rodrigues – After also struggling with injury last season, Delilah finally got to play a full season with her Slayers and with 16 goals scored they were very happy to have her back in action.

Georgia Sabey – Georgia arrived wood-stick in hand for her first season and while she's since upgraded her stick she still brings her “vintage” expertise to the Slayers defense.

Sophia “Sop” Tzannes – The heart of our team and not just because she’s our center. Sop was always the player to keep everyone grounded. She seemed to be everywhere on the field all at once.

Chloe Vanderhaar – while she started most games with a disclaimer that she might get carded, Chloe didn’t get carded but did score her first goal this season.

Meg Wotherspoon – Joining for her first season introducing the youngest slayer, the bubbly and energetic Meg! She was so committed to her role as a goalie that she arrived to a game still in scrubs after having delivered 12 puppies!

Lisa Zions – Lisa is easily our most under-rated player. Her versatility on the field, stick skills and strategic positioning helped the Slayers to many of our wins.



SEHA:

Back row (L to R): Rachael Beckett, Chloe Vanderhaar, Sophia Tzannes, Eleanor Gibson, Helen Gibson, Lisa Zions

Middle row (L to R): Adelle Mitchell, Renee Traves, Delilah Rodrigues, Georgia Sabey, Zoe Le Marinel, Glenn Lim (Coach)

Front Row (L to R): Trish Rebeiro, Aoife Mullan, Amanda Chivers, Ally Catterson, Kate Day, Meg Wotherspoon

Women's games played

Full Name	Total Club Games
Melissa Newton	520
Helen Howe*	402
Elaine Trodden*	389
Carole Wark*	384
Louise Tapsell	380
Linda Tait*	376
Amy Wark*	337
Christine McNicoll*	333
Josie Barron	287
Kate Gleeson	286
Kylie Lawson*	281
Rebecca Howe*	280
Ann Rochester*	265
Kate Pearsall*	238
Monica Bordignon	222
Angela Wark*	222
Jessica Higgs	216
Ellie Williams*	209
Robyn Ainsworth*	209
Mary Wark*	204
Michelle Hancock	200
Tessa Bruin	200
Sian Morgan	196
Erin McCleave	160
Alisha Middleton	152
Olivia Edwards	148
Aisling Klimoski	143
Elena Hux	142
Olivia Cain	142
Madeleine Scott	137
Emma Alexander-Prideaux	136
Lynsey Askew	128
Claudia Otto	127
Litiana Field	118
Sarah Brine	117
Deanne Barnes	104

Full Name	Total Club Games
Gemma McKenzie-Booth	104
Katrina Cochrane	98
Bridget Kelly	98
Rosa Smith	96
Amelia White	95
Stephanie Boyce	94
Carla O'Donnell	94
Cate Heath	93
Talia Morrow	93
Chantelle Hughes	91
Susan Kernot	90
Lauren MacRae	81
Molly Busch	80
Eleanor Gibson	77
Olivia Branson	77
Helen Gibson	74
Rachael Beckett	73
Abbie Sen	71
Jessica Kennedy	69
Renee Traves	63
Lydia Najdzion	60
Kate Day	57
Carolyn Pitt	52
Jessica Weatherall	51
Ally Catterson	50
Emerson Bonhote	46
Siala Cochrane	46
Hannah Yeo	45
Ayisha Travis	43
Amanda Chivers	42
Valentina Alonso	42
Aoife Mullan	41
Zoe Le Marinel	40
Helen Przybylski	40
Emily Williams	39
Shani Middleton	39
Delilah Rodrigues	36
Christina De Bruin	36

Full Name	Total Club Games
Anna Kepert	34
Ashlee Ryan	33
Sophia Tzannes	32
Ella Tamir	32
Ciara Jarvis	31
Alicia Van Gastel	29
Lilli Seebacher	28
Ashley van Damme	26
Miki Cooper	26
Georgia Sabey	25
Lisa Zions	25
Zoe Brown	23
Aoife Walsh-Sams	20
Floor Beckmann	20
Zoe Nisbet	20
Trish Rebeiro	18
Jaishri Morar	18
Meg Wotherspoon	17
Adelle Mitchell	17
Cassie Townson	17
Chloe Vanderhaar	16
Mia Carlsson-Hojland	16
Sam Carson	16
Zoe Leuthard	16
Laura McGrath	15
Lulu Kerslake	13
Ellie Thorpe	8
Deanna Carscadden	6

* Indicates record of players in top 20 of games played that did not play in 2024 season.

Men's Report



**Men's Director
Adrian McKeown**

The year started with an optimistic buzz with the men's coaches and club captain seriously considering entering a 7th team in the 2024 Sydney Hockey competition – you may recall that a couple of years ago we went up to 6 teams from 5.

A lot of hard work in the recruiting area had taken place over the off-season both in indoor circles and in regional areas north and south of the Sydney Basin.

Coaches reflected towards the end of the season that staying at 6 teams had been the right call. There were more players out with serious injuries this year than during previous years – nearly enough to fill a team!

Results were looking promising at the beginning of the year but tailed off towards the end. Our lower grades struggled due to injuries and finished mid to lower-table. Only our Premier League 1 and 2 teams (1st and 2nd grades) made the quarter finals this year and for the second year running. Both teams were defeated by the teams that went on to play and win their respective grand finals (UNSW and Moorebank).

2024 Men's Results

Grade	Position on table	Wins	Draws	Losses
PL1	6 of 11	6	2	8
PL2	5 of 11	10	0	6
PL3	11 of 11	1	4	11
SL2	7 of 10	7	4	7
SL3	8 of 10	5	1	12
SL4	10 of 10	2	1	15

I always look at the positives in these situations. We are a club that does more with less and punching upwards. Without a full-size turf of our own, which brings with it major sponsors and field hire income, we need to be realistic. We are top of clubs that don't pay players.

Our Coaches



Mack Noller (Club Captain), Gareth Mealing (PL3), Mark Paterson (Assistant PL1), Darcy Tobias (SL2), Craig Martin (PL1), Adam Campano (PL2), Aaron Oman (Coaching consultant).

Absent: Brad Goodridge (PL3), Hamil Bulla (SL4), Terry Kelly (PL1-3 Manager)

Fostering the future

We had a good number of juniors playing seniors this year and more than a couple of men playing with their sons on the field. Many of juniors distinguished themselves with selections in representative teams. Glebe has always taken great pride in fostering juniors teams and continues to do so.



Seniors supporting junior players in 2024.



Ball-people for PL1:
Lachlan, Alby,
Declan, Rupert,
Camilla and Sophie

Milestones

- Adam Campano – 600 club games
- Dom Tintner – 300 club games
- Jake Ribarovski – 300 club games and 100 first grade games
- Paul Jowett – 300 club games
- Alister Cullen – 250 first grade games
- Mack Noller – 200 club games
- Grant Martin – 200 club games
- Jacob Warnock – 100 club games
- Mitchell Brain – 50 first grade games



Campo celebrated 600 club games in April, complete with the PL3 Players' Player award.

Representing Glebe far and wide

Congratulations to all the Glebe Men selected in NSW teams – field and indoor – and to the many Glebe players for taking on competitions outside of Sydney including in the Central Coast/Hunter/Newcastle competitions.



Proudly NSW: Mitch Brain winning the Australian Country Championship (and then being selected in the Australian Country team); Brad Goodridge winning Over 50s National Champs for the NSW O50(2) team; Henry Hunt and Rob Frew, looking good in blue.

It was also fantastic to see Glebe players feature at the Masters World Cup in Auckland, New Zealand, in November with Brad Goodridge, Craig Martin and Peter Busch all wearing the green and gold, while George Manou also took the field for the Southern Cross Men's O60s team. Playing in the International Master Cup divisions, it was:

Gold: for Brad and the Australia A Over 50

Silver: for Craig and the Australia A Over 55

Silver: for Peter, vice captaining the Australia A Over 60



In the medals: Peter Busch (over 60 As) and Brad Goodridge (over 50 As); and Craig Martin (over 55 As), right-most, with local North's club mates.



Many of Glebe's players play in Sunday competitions, winning premierships outside Sydney.

Looking ahead

Our annual players' survey was instructive, revealing that the majority of players believe Glebe is offering a good product and is true to our values of Family, Equality, Contribution and Commitment. There was a positive response in relation to training and social events.

Despite this, we are developing a strategy going forward, aiming to improve our player experience and overall results. Our coaching and leadership group is looking to make improvements in 2025 in relation to turf and fitness training and team structures.

Glebe is putting forward a white paper at the Sydney Hockey Annual General Meeting, advocating for a change to the men's competition. The proposed change is that all teams play each other twice in the season.

Currently, there is a perceived imbalance, whereby some teams play the lowest team in the competition twice where others don't. These points of difference can be determinative in the final table at the end of the season. Glebe is advocating that the advantages to this change would be a more even competition, more hockey for the same fees and fewer byes.

Congratulations

Congratulations to Glebe's John Cullen and Ted McKeown, who both received awards from the NSW Governor this year. John Cullen was made a Member of the Order of Australia (AM) and Ted McKeown a Member of the Order of Australia (OAM).



John Cullen (second from left) and Ted McKeown (middle) at Government House with former Glebe Junior Lewis McKeown (left) and current players Al Cullen and Adrian McKeown (right).

In conclusion, I would like to again say it has been a fun season and an honour to be Men's Director for the 2024 season.

Thank you to all coaches, volunteers, players and their partners and families. Thank you to Jess Kennedy for standing in for 3 men's SL3 and 4 games when we were short of a goalie at the end of the season, and for Sydney Hockey for agreeing to this. Thanks to our volunteer ball-persons and commentators. You are all legends of Glebe and Sydney Hockey!

Adrian McKeown



Jess Kennedy, played in men's SL3 and SL4 games this year, often winning MVP!



Scenes at Derby Day at Cintra vs Briars: Peter Busch, Alex Sheard, Adam Campano, Matt Wilson, Al Cullen, Josh La Spina, Adrian McKeown, Geoff Paters, Victor Dunand and Jake Riborovski. Photo credit: Liam Crowhurst.

Premier League 1 (PL1) Report

First Grade

PL1 Coach
Craig Martin

Team	Played	Wins	Draws	Losses	Forfeits	BYEs	For	Against	Diff.	Points
1. Sutherland	16	13	3	0	0	2	85	24	61	42
2. Ryde HH	16	13	3	0	0	2	69	18	51	42
3. UNSW	16	11	1	4	0	2	71	35	36	34
4. Moorebank-Liv	16	10	2	4	0	2	69	19	50	32
5. NWS-BH	16	8	4	4	0	2	47	25	22	28
6. Glebe	16	6	2	8	0	2	46	41	5	20
7. Manly-GNS	16	6	0	10	0	2	42	50	-8	18
8. Northern Districts	16	5	1	10	0	2	35	55	-20	16
9. Briars	16	4	2	10	0	2	41	63	-22	14
10. Sydney Uni	16	3	0	13	0	2	20	77	-57	9
11. Raptors	16	0	0	16	0	2	6	124	-118	0

The 2024 season was highlighted by the PL1 team reaching the goal of playing finals hockey after falling short in the previous season.

The team was a good mixture of experienced players, younger players stepping up and new players who we welcomed to the club for the first time. The comradery was a pleasing aspect from a coaching perspective which transferred to the playing field which was evident in the on-field results and the training numbers who were present week in week out.

We welcomed players from far afield – from Lithgow, Newcastle, South Coast and the Central Coast – who joined the local players, only strengthening our playing groups across all grades and with many of them achieving representative selection through the year.

With further recruitment and juniors coming through the grades the future looks bright.

Recruitment and Development are the two key areas as a Team and Club where we need to focus on if we are to continue to achieve us on and off -field goals. This requires the club to come together as one to achieve the desired outcome for the benefit of the club's future.

The new turf at Federal Park was a great additive which enabled not only another training facility but also ability for the players and other club members to socialize and embrace the family environment which is one the pillars of success the Glebe District Hockey Club is known for and continues to foster. I have no doubt this was a key factor across the whole club on and off the field.

A special call out to Mark Paterson, Ross Bougoukas, Aaron Oman and Ken Wark for their tireless work organising training week in week out. I've no doubt the positive on field results were attributed to tireless hours and focus given to our training sessions over the entire season.

Also, to our intrepid Manager, Terry Kelly, whose enthusiasm and dedication to the Manager's role is second to none. From organising ball boys and girls every week, to providing all the administration with match cards, video analysis and providing match stats and players' player votes each week not only across the PL1 team but assisting other teams, making our coaching jobs that little bit easier.

The two Derby Day wins in 2024 were special in more ways than one. The true club spirit and determination was evident climbing back from 3-0 down against Briars to a 5-3 win.

None of the on-field success can be achieved without the support and backing of the Glebe District Hockey Club Board. On behalf of the PL1 team, I would like to thank all Board members on their tireless work during the 2024 season – it is greatly appreciated.

Also to our army of supporters who turned up week in week out to support the team. I'm sure in some of our tighter games, the sea of Maroon and vocal support got us over the line.

Yours in Hockey,

Craig Martin.



PL1

Back row (L to R): Mark Paterson, Orlando Travis, Liam Crowhurst, Nico D’Onofrio, Aleks Manou, Dylan Howe, Mitchell Brain, Tim Pritchard, Mack Noller, Henry Hunt.

Front row (L to R): Michael Sneesby, Ross Bougoukas, Dan Palomeque, Doug Allison, Ben Martin.

Premier League 2 (PL2) Report

Second Grade

2nd Grade Coach
Adam 'Campo' Campano

Team	Played	Wins	Draws	Losses	Forfeits	BYEs	For	Against	Diff.	Points
1. UNSW	16	13	2	1	0	2	60	17	43	41
2. NWS-BH	16	12	1	3	0	2	66	13	53	37
3. Sutherland	16	11	1	4	0	2	50	31	19	34
4. Moorebank-Liv	16	10	2	4	0	2	76	24	52	32
5. Glebe	16	10	0	6	0	2	34	26	8	30
6. Ryde HH	16	8	2	6	0	2	54	34	20	26
7. Manly-GNS	16	7	2	7	0	2	43	42	1	23
8. Briars	16	5	2	9	0	2	24	37	-13	17
9. Northern Districts	16	3	2	11	0	2	32	59	-27	11
10. Sydney Uni	16	2	0	14	0	2	10	56	-46	6
11. Raptors	16	0	0	16	0	2	5	115	-110	0

What a great group of (mostly) young men that made up Glebe Men's 2nd grade team in the 2024 season. The club culture was firmly back in place after a couple of seasons spent rebuilding and prioritising positive attitude, commitment to training, collaborative learning, and personal accountability, plus an overall higher-level performance. 2nd grade competed well in every match it played during the season, suffering only the one blow-out loss, but ultimately falling again at the same hurdle (1st week elimination final) as season 2023.

We welcomed seasoned 1st grade campaigners Dom Tintner, Alex Sheard and Sam Alexander-Prideaux, into the team; as well as returning player to the club, Anderson McDonald; the addition of young guns, Oliver Tordoff and Ozzie Cameron; and promotion of 3rd grader, Clayton Herbst, to the core of players that existed already from last season.

The team's dedication and commitment to improvement and performance was top notch and resulted in greater fitness levels; a much-improved defensive effort (only 26 goals against for the season) and a slightly better win record and points total than season 2023, as well as first-time wins for over a decade against rivals NW Strikers & Ryde. Unfortunately, the team's inability to score goals in the games that mattered led to their early exit from the finals race. It also didn't help that key players, Ian Paterson and Sam A-P were injured and unavailable at the back end of the season.

The players should be very proud of their efforts, and I am grateful to them for supporting me in my coaching role. In Ian and Alister, my Assistant Coaches, I have two extremely technically proficient supports who have not only great communication skills, but the respect of all their team mates, and in my mind have all the necessary tools to be future 1st grade coaches at Glebe (no pressure!).

The fitness challenge initiative by Matt Wilson helped motivate players in a whole of club approach during the off-season to reach levels of fitness the club had not been at for a long time. Thanks for driving this Matt, and please keep doing so!

The future is exciting for this group, particularly now that Glebe has its own artificial turf at Jubilee. There is a huge opportunity to use the turf as a basis for driving improvement and development via skills sessions where those specific hockey skills that players are efficient and less comfortable with can be addressed.

The playing group was as follows:

Robert Frew (GK) – In off-season, I asked Rob to focus on his concentration and consistency. He did that in spades and showed maturity beyond his years. Much improved communication with his back 4. Kept us in a number of games against the top teams. The future top dawg..

Alister Cullen (Back) – The skipper had a huge off-season focusing on his fitness and it was no surprise that he was a stand-out consistently during the season. Al's leadership is unparalleled, as he continues to be a wonderful role model to all players, while maintaining a high standard of play, and still ticking off the odd 1st grade appearance.

Dom Tintner (Back) – It was great to re-engage with Dom as player-coach, after not coaching him since U/17s (how long ago?) in the one-off 'Gliars' (Glebe & Briars) team experiment. Dom brought light-hearted banter to the team and a high standard of play – championing IFIT defence, while often using his super fitness to support attacking movements upfield.

Ed Noller (Back) – The real 'Shred' finally stood up this season. Better fitness, attitude, dedication, general hockey IQ – and now, a genuine on-field leader. Ed continues to improve several aspects of his game and is reaping the rewards.

Corey Morrow (Back) – Great for Corey to return midway through season and it wasn't long before he was leading by example on-field, through strong defence and his expansive passing game. Always a pleasure.

Ozzie Cameron (Mid) – Can play any position on field. Even when he was playing back, our strike unit looked way more likely, due to his ability to link up and support in attacking zones. Fiercely competitive and determined, Ozzie is one of the most talented, and refreshingly flamboyant and expressive young players, I've ever seen. Watch this space.

Alex Sheard (Mid) – The team MVP and best player. It is a joy to watch Sheardy play, his first touch is natural and intuitive, his close-in skills unbelievable and his ability to initiate counter attacks from deep defence is a special talent. The special attention Sheardy got from other teams was surely a mark of respect for his ability.

Jake Ribarovski (Mid) – Jake had to contend with multiple unlucky injuries during the season, which impacted the effect he had on the team. Early on in the season, Jake was at near best, running riot on Glebe's RHS, starting attack after attack. A great team and club man, hopefully, Jake has an injury free 2025 season.

Josh La Spina (Striker) – Our main man, 'Eric', had a season impacted by unfortunate health issues, which prevented him from being at the incredible level of 2023, where he was highest goal scorer and MVP of the SHA PL2 competition. When he was on, he was on, as his 4 goals against Sydney Uni demonstrated and was still easily the team's highest goal scorer. Roll on 2025.

Matt Wilson (Striker) – In Josh's early season absence, and following Ian's injury, 'Marty' led the team's new striker unit, and did a great job. While Marty as goal scorer is still a work in progress, he showed great improvement in almost every other area, including his pressing skills, on field leadership and hockey IQ.

Sam Alexander-Prideaux (Mid) – A superbly skillful player, Sam was getting back to top form, until injury curtailed and ultimately ended his season. Sam was superb in the games against the top teams and always looked threatening in attack. We are very lucky to have such a talented 1st grade caliber player playing in 2nd grade.

Clayton Herbst (Striker) – Started the season with a bang, showing that his speed, 3D skills and unpredictability could be a point of difference, including an early goal of the season contender against GNS. However, Clay's midseason trip and subsequent illness derailed his season and all but undid all the pre-season hard work. Very talented – I look forward to play a part in Clay's ongoing development.

Anderson McDonald (Mid) – 'Ando' last played for Glebe as a teenager before his life journey took him elsewhere. It was great to have Ando back in the senior playing group, where his experience, hockey IQ and unique personality brought a new-found 'juju' to the team. Welcome back.

Cameron Jones (Mid) – Cam is a super talented and well-liked member of the team. It feels like he's been playing for 10 years, I often forget he is still in his early 20's. I'm looking forward to the day when Cam is injury free so that we can properly see the immensely skillful and talented player that he is unleashed on the hockey field.

Victor Dunand (Backs/Mid) – ‘Victor the Inflictor’ was once again the team’s ‘Mr Fix-it’, playing in any role his coach asked of him. Vic spent most time in the back 4 but played mids and striker also to show his great versatility and value to the team. Loves thinking about his hockey and always looking for ways to improve his game.

Olly Tordoff (Striker) – Still a club junior, Olly moved up from 3rd grade to develop his game further in 2nd grade, a decision that was validated by his coming-of-age performance in the elimination final loss against Moorebank. Olly played out of his skin and showed what a great future he has in maroon and white. Huge potential.

Ian Paterson (Striker) – What could have been! Ian was in electric form in the early season and critical in our early undefeated run, until his season-ending injury occurred. Ever the club man, Ian ramped up his coaching assistance to the team (once the doctor got him into as moon boot) and proved his insights and training methods were invaluable to player improvement.

Jayden Mare (Mid) – While Jayden in his first year at Glebe was primarily a regular 3rd grader, he was requested to assist 2nd grade for a good part of the season and made a good fist of the chances he received. Jayden has wonderful 3D skills, pace and a developing drag flick that will improve as he gets older and stronger. One to watch.

Thanks must go to Terry for managing the team and for always challenging me; to Mack and Ado, for their board support; to Craig, for getting me to training and for always being a sounding board for my ideas for the Men’s club; and to Aza, for getting involved with the GDHC again (albeit as a ‘consultant’).

Last, but not least, I must thank the GDHC President, Sue Heath, for her ongoing support of the Men’s club, and for her passion and skill in leading the club and advocating for all its members in challenging times.



PL2

Back row (L to R): Terry Kelly (Manager), Clayton Herbst, Corey Morrow, Alex Sheard, Ed Noller, Ian Paterson, Josh La Spina, Alister Cullen, Victor Dunand, Anderson McDonald, Adam Campano (Coach)

Front row (L to R): Ozzie Cameron, Jake Ribarovski, Dom Tintner, Rob Frew, Sam Alexander-Prideaux, Olly Tordoff, Matt Wilson.

Premier League 3 (PL3) Report

Third Grade

3rd Grade Coach
Brad Goodridge

Team	Played	Wins	Draws	Losses	Forfeits	BYEs	For	Against	Diff.	Points
1. UNSW	16	11	4	1	0	2	47	18	29	37
2. Sutherland	16	10	4	2	0	2	61	28	33	34
3. Moorebank-Liv	16	10	2	4	0	2	41	20	21	32
4. Northern Districts	16	10	1	5	0	2	47	33	14	31
5. Ryde HH	16	8	6	2	0	2	48	21	27	30
6. Briars	16	7	1	8	0	2	44	39	5	22
7. Manly-GNS	16	5	5	6	0	2	40	35	5	20
8. NWS-BH	16	4	2	9	1	2	26	58	-32	14
9. Raptors	16	4	0	12	0	2	25	61	-36	12
10. Sydney Uni	16	2	3	11	0	2	21	49	-28	9
11. Glebe	16	1	4	11	0	2	18	56	-38	7

This year's PL3 managed to welcome a cast of new players to the club: from Wollongong Thomas Frew and Jayden Mare; from Central Coast/Newcastle Dusty Cameron and Elijah Rea; and from the UK Piers Beesley and Sash Fomin. This meant there was a pretty new side and good mix of youth and experience. In the end we managed to give all the top teams a good shake, but just did not get the connection and consistency together to be as competitive as we would have hoped.

The team has seen some impressive performances from its younger players this season and I look forward to seeing them progressing through the grades in the coming years.

Overall Performance

- Wins: 1
- Draws: 4
- Losses: 11

Match Results

We managed to secure a great victory against Manly-GNS at their home ground with a score of 2-1 which was a reflection of where we could have been in the competition as they just missed the semis due to us beating them. Draws against Sydney Uni (1-1), NWS-BH (2-2), Ryde HH (2-2), and another draw with Sydney Uni (3-3), were all games we should have won, having led.

The Top Scorers: were Jayden and Taylor with only 4 goals each; I think the team would agree we all left plenty of goals out on the park. Jayden has a developing drag flick which we hope he can develop over the next year or two into a great weapon.

Despite the challenges, the Glebe PL3 team has shown resilience and determination. The season's experiences will undoubtedly contribute to their growth and future success.

Players' player was Dusty Cameron who was a great addition to the team, with great tackling and organising of the defence. He has earned the admiration of both teammates and opponents.

Many thanks to Terry Kelly, for his Manager skills and stats taking, also thanks to Ken Wark who provided feedback notes early in the season. Also appreciate the help of Craig Martin, providing tips and feedback to

me and players during games. They senior players also stepped up: Andrew Cheong and Chris Farrugia were always reliable and able to provide feedback to the team.

Hopefully we can get right the mix players together next year, so that we can progress up the table and experience finals again.



PL3

Back row (L to R): Cameron Johnson, Piers Beesley, James Martin, Andrew Cheong, Clark Foster, Chris Farrugia

Front row (L to R): Seb Derrick, Jayden Mare, Taylor Pocock, Thomas Frew, Elijah Rea, Brad Goodridge, Aidan Najdzion

Sydney League 2 (SL2) Report

Fourth Grade

4th Grade Coach
Darcy Tobias

Team	Played	Wins	Draws	Losses	Forfeits	BYEs	For	Against	Diff.	Points
1. Ryde HH	18	15	1	2	0	0	92	23	69	46
2. Northern Districts	18	12	2	4	0	0	52	27	25	38
3. UNSW	18	11	4	3	0	0	50	18	32	37
4. Manly-GNS	18	11	2	5	0	0	41	21	20	35
5. St George/Rand	18	8	5	5	0	0	45	47	-2	29
6. Sutherland	18	8	3	7	0	0	31	36	-5	27
7. Glebe	18	7	4	7	0	0	39	39	0	25
8. Macquarie Uni	18	3	1	14	0	0	12	55	-43	10
9. Moorebank-Liv	18	1	3	14	0	0	26	78	-52	6
10. Bentstix	18	1	1	16	0	0	10	54	-44	4

I would like to firstly thank Mack Noller and Adrian McKeown for giving me the opportunity to lead Glebe's 4th grade men's team this year. It has been an honour and a privilege.

Competing in SL2, it was a very competitive grade where any team could meet their match.

Our team each week was a healthy mix senior players in the likes of Pat Wark, Tony Wark, Craig Martin, Paul Jowett and Adam Campano accounting for 350 first grade games in experience and, future first grade players in Seb Derrick, Declan Cohen, Cody Finlayson and Marley Seebacher. It was pleasing to see the team move from a mix match of players in round 1 to a team of players on equal standing in round 18.

I would like to thank all of the 31 players who took the field for SL2 for Glebe this year for buying in to what we were trying to build and I hope you all enjoyed your experience.

It was a year embodied by three main points written on the whiteboard each week:

1. Composure on the ball;
2. Win the contest; and
3. Results in the circle.

When we were able to do the above, no team could get near us. There is one distinct passage of play that sticks out when I reflect upon the season and it came in round 9 against Bentstix. The ball started with a 16-yard hit at left half and transitioned the entire field up the right wing in 6 passes, all to a stick and all on the move resulting in the simplest tap in goal. More of that please!!

Season milestones

- Adam Campano – 600 senior games
- Paul Jowett – 300 senior games
- Jacob Warnock – 100 senior games

Top goal scorers

1. Jamie Travis – 7 goals;
2. Sam Bagley – 4 goals; Cody Finlayson – 4 goals; and Paul Jowett – 4 goals.

Players' player

1. Seb Derrick;
2. Pat Wark; and
3. Cody Finlayson.

It was an intriguing season with players' player votes however the result was undeniable as Seb proved his skill and ability once he settled into senior hockey.

I'd like to take this time to specifically thank Julian and Campo for their support throughout the season. I could not have done it without their assistance in selections and managing the team in general.

I look forward to seeing everyone again next year as we build upon our results this year.

GO RED MEN!



SL2

Back row (L to R): Declan Cohen, Cody Finlayson, Marley Seebacher, Simon Wark, Sam Bagley, Darcy Tobias, Julian Derrick, Seb Derrick.

Front row (L to R): John Hammond, Jamie Travis, Caleb Bourke, Matt Najdzion, Kelin Landry (GK).

Sydney League 3 (SL3) Report

Fifth Grade

5th Grade Coach
Gareth Mealing

Team	Played	Wins	Draws	Losses	Forfeits	BYEs	For	Against	Diff.	Points
1. Ryde HH	18	14	2	2	0	0	53	22	31	44
2. Sydney Uni	18	13	1	4	0	0	62	27	35	40
3. St George/Rand	18	11	2	5	0	0	44	34	10	35
4. UNSW	18	10	2	6	0	0	63	40	23	32
5. NWS-BH	18	7	4	7	0	0	26	33	-7	25
6. Northern Districts	18	6	6	6	0	0	32	36	-4	24
7. Briars	18	6	5	7	0	0	27	31	-4	23
8. Glebe	18	5	1	12	0	0	24	38	-14	16
9. Manly-GNS	18	3	2	13	0	0	25	55	-30	11
10. Raptors	18	1	3	14	0	0	14	54	-40	6

As we conclude another season, I want to express my gratitude to everyone who has been part of this journey. This year has been a testament to our team's growth, resilience, and heart, and it has been truly rewarding to see how we've come together to create such a memorable season with great comradery.

A particularly special highlight was the inclusion of our first female goalkeeper in the Glebe Men's competition. Jessica Kennedy's participation was a significant milestone and showcased our commitment to fostering an inclusive environment. Her performance was inspiring and she made the opposition fight for every goal!

Throughout the season, we saw 38 different players take to the field, each bringing their unique talents and energy to our team. Many of our matches were fiercely contested with more than half the season being decided by just a single goal. Our ability to stay in close games and push hard until the final whistle was a testament to the dedication and spirit of every player.

The players' player awards saw Caleb Bourke taking 1st place, followed by Tom Hurrell in 2nd and Matt West in 3rd. Gareth Mealing took out highest goal scorer.

One of the standout moments of the season was undoubtedly the Goal of the Season, scored by Neil Murphy. It all started with a long ball received at the top of the D – Neil dragged left to beat a defender, then, with a spectacular diving backstick slap shot, sent the ball flying into the back corner of the goal. The keeper didn't stand a chance! As Neil hit the ground, the entire team piled on top of him in celebration – an unforgettable moment that epitomised the heart and joy of our team.

As we reflect on the season, let's celebrate the achievements and the fun we had along the way. The enthusiasm and commitment have been truly remarkable, and I'm excited to see what we can achieve together in the seasons to come.



SL3

*Back row (L to R): Declan Cohen, Neil Murphy, Alex Gibson, Adrian McKeown, Michael Hosking, Matt West, Tom Hurrell
Front row (L to R): Alistair Rowe, Evan Cooper, Ivo Heap, Caleb Bourke, Kelin Landry (GK).*

Sydney League 4 (SL4) Report
Sixth Grade

6th Grade Coach
Hamil Bulla

Team	Played	Wins	Draws	Losses	Forfeits	BYEs	For	Against	Diff.	Points
1. Cronulla Sharks	18	13	2	3	0	0	47	18	29	41
2. Sutherland	18	12	3	3	0	0	56	18	38	39
3. Northern Districts	18	10	5	3	0	0	62	23	39	35
4. St George/Rand	17	11	2	4	0	0	42	26	16	35
5. Ryde HH	17	8	1	8	0	0	35	28	7	25
6. Monterey	18	7	3	8	0	0	38	37	1	24
7. Bentstix	18	6	3	9	0	0	35	38	-3	21
8. Easts	18	6	2	9	1	0	35	42	-7	20
9. Bankstown	18	2	2	13	1	0	29	94	-65	8
10. Glebe	18	2	1	15	0	0	24	79	-55	7

The savaging sixers hockey season has come to a close, and unfortunately, it was a year filled with more challenges than triumphs. While the overall season was challenging, there were a few bright spots, we had three hattricks and saw a significant improvement in players skill levels.

We welcomed 3 juniors and 3 new players to our team. Our players' player was shared with our stronghold of the back goalie James Roxburgh and Dylan Yates.

We remain optimistic about the future of our team. We will use this experience as a learning opportunity and work diligently to improve our performance next year. We are committed to rebuilding our roster, strengthening our team chemistry, and developing our young talent.



SL4

Back row (L to R): Tim Nelson, Travis Dehnert, Alex Gibson, Andrew Goodrick, Zach Jaensch, Hamil Bulla, Peter Rutledge, Erin Schlicht, Michael Powell

Front row (L to R): Dylan Yates, Max Harms, James Roxburgh (GK), Austin Hughes, Eric Rutledge, Andy Bestel.

Men's games played

First Name	Last Name	Total 1st Grade Games	Total Games
Les	WARK*	303	816
Harry A	WARK*		757
George	MANOU		733
Stephen	CASEY*		720
Martin	HOWE*		712
Peter	BUSCH	218	697
Colin	BROWN*		660
Danny	OBRIEN*		644
Harry J	WARK*	180	643
Peter	HOWE*		641
Victor	WESTACOTT*		623
Vernon	HOWE*		620
Adam	CAMPANO	7	607
Andrew	GOODRICK		590
Colin	ROCHESTER*		577
Bill	STUBBS*		561
Paul	ROGERS*		557
Peter	MITCHELL*		555
Robert	WARK*		542
Gary	WARK*		536
Michael	BOUGOUKAS*		535
Tim	SUTTON*	15	518
Brad	GOODRIDGE	96	516
Alex	MCPHEE*		503
Ken	WARK SNR*	342	492
Pat	NILAN*	361	454
Josh	LA SPINA	236	448
Craig	MARTIN	50	444
Ken	WARK JNR*		444
Charlie	BROWN*		426
Aaron	NILAN*	201	426
David	ROCHESTER		416
Patrick	WARK	194	411
Anthony	WARK	98	410
Andrew	CHEONG	118	390
Aaron	OMAN*	226	387

First Name	Last Name	Total 1st Grade Games	Total Games
Mark	SHORT		385
Sam	BAGLEY		367
Alister	CULLEN	252	364
Aleks	MANOU	241	355
Adrian	MCKEOWN		355
Ian	PATERSON	241	348
Mark	PATERSON	285	345
Ross	BOUGOUKAS	220	331
Simon	WARK		325
Christopher	FARRUGIA		316
Dominic	TINTNER	189	314
Paul	JOWETT	2	309
Jake	RIBAROVSKI	103	300
Sam	CHRYCOS		281
Dylan	HOWE	70	267
Alex	SHEARD	81	265
Victor	DUNAND	42	247
Corey	MORROW	34	230
Mackenzie	NOLLER	67	210
Edward	NOLLER	13	195
Jamie	TRAVIS		186
Sam	ALEXANDER-PRIDEAUX	93	141
James	MARTIN		139
Tim	PRITCHARD	92	128
Travis	DENHERT		121
Ben	MARTIN	67	120
Gareth	MEALING		120
Jacob	WARNOCK		117
Dylan	YATES		93
Cameron	JONES	22	91
Matthew	WEST		90
Hamil	BHULLA		87
Anderson	McDONALD	1	86
Peter	RUTLEDGE		84
Caleb	BURKE		82
Aidan	NAJDZION		72
Michael	MONFORTE		71
Orlando	TRAVIS	45	71

First Name	Last Name	Total 1st Grade Games	Total Games
Clark	FOSTER		69
Thomas	HURRELL		61
Mitchell	BRAIN	55	57
Erin	SCHLICT		53
Michael	SNEESBY	48	50
Matthew	WILSON	2	50
Zachary	JAENSCH		46
Julian	DERRICK		44
Alex	GIBSON		43
Daniel	PALOMEQUE	17	42
Cameron	JOHNSTON		40
James	ROXBURGH		38
Cody	FINLAYSON		37
Robert	CURLEWIS		35
Robert	FREW	1	35
Marley	SEEBACHER		35
Nicolas	D'ONOFRIO	20	34
Oliver	TORDOFF		34
Henry	HUNT	29	32
Neil	MURPHY		31
Darcey	TOBIAS		30
Doug	ALLISON	28	29
Billy	CHEUNG		29
Liam	CROWHURST	11	28
Seb	DERRICK		27
Clayton	HERBST	1	25
Joss	LUKA		25
Jayden	MARE		22
Taylor	POCOCK		21
Evan	COOPER		19
Michael	HOSKING		19
Max	HARMS		18
Thomas	FREW		17
John	HAMMOND		17
Elijah	REA		17
Andy	BESTEL		16
Matthew	NAJDIZION		16
Michael	POWELL		16

First Name	Last Name	Total 1st Grade Games	Total Games
Alistair	ROWE		16
Bruce	MACLENNAN		15
Piers	BEESELEY		14
Eric	RUTLEDGE		14
Ozzie	CAMERON	5	13
Gab	DERRICK		13
Jackson	HARRISON	12	13
Austen	HUGHES		12
Dusty	CAMERON		11
Declan	COHEN		11
Tim	NELSON		10
Job	LAAN		9
Kelian	LANDRY		9
Rupert	HUGHES		8
Alexander	SASH FOMIN		8
James	BRINE		7
Leo	NELSON		6
Jackson	MARGETSON		5
Jessica	KENNEDY		3
Ben	HARRISON		1
Ivo	BOARDMAN		1
Nick	SABEY		1
Dan	SHAW		1

* Indicates players included who have retired or who did not play in the 2024 season.

Club Trophies and Honours 2024

Club Trophies 2024

TROPHY	NAME
W.J. TAYLOR CUP	NICO D'ONOFRIO
V.J. TURNER CUP	SEBASTIAN DERRICK
A.J. OLDFIELD CUP	HENRY HUNT
HARRY WARK SNR TROPHY	DARCY TOBIAS
MICHAEL 'ABBO' ATTERTON TROPHY	ORLANDO TRAVIS
J.W. KENNY TROPHY	BEN MARTIN
ROBERT DIVINEY MEMORIAL TROPHY	TIM PRITCHARD
MARGARET HOWE ENCOURAGEMENT AWARD	JESSICA KENNEDY
CAROLE WARK UMPIRING TROPHY	PETER BESTEL
NATALIE WHITE TROPHY	JESS WEATHERALL
ANN ROCHESTER TROPHY	SARAH BRINE
MOLLY WARK TROPHY	MONICA BORDIGNON
MADDY DELL MEMORIAL TROPHY	AMELIA WHITE
PAT NILAN TROPHY	MONICA BORDIGNON

Club Honours – Men's

AWARD	NAME
GEOFF PATERSON TROPHY MEN'S HIGHEST GOAL SCORER 2024	ORLANDO TRAVIS (15 Goals)
1 ST GRADE MEN'S PLAYERS' PLAYER	MICHAEL SNEESBY
2 ND GRADE MEN'S PLAYERS' PLAYER	ALEX SHEARD
3 RD GRADE MEN'S PLAYERS' PLAYER	DUSTY CAMERON
4 TH GRADE MEN'S PLAYERS' PLAYER	SEBASTIAN DERRICK
5 TH GRADE MEN'S PLAYERS' PLAYER	CALEB BURKE
6 TH GRADE MEN'S PLAYERS' PLAYER	JAMES ROXBURGH

MILESTONE ACHEIVEMENTS	NAME
600 CLUB GAMES	ADAM CAMPANO
300 CLUB GAMES	PAUL JOWETT
300 CLUB GAMES	JAKE RIBAROVSKI
300 CLUB GAMES	DOMINIC TINTNER
200 CLUB GAMES	MACKENZIE NOLLER
200 CLUB GAMES	GRANT MARTIN

MILESTONE ACHEIVEMENTS	NAME
100 CLUB GAMES	JACOB WARNOCK
250 1ST GRADE GAMES	ALISTER CULLEN
100 1ST GRADE GAMES	JAKE RIBAROVSKI
50 1ST GRADE GAMES	MITCHELL BRAIN

Club Honours – Women’s

AWARD	NAME
LINDA TAIT TROPHY WOMEN'S HIGHEST GOAL SCORER 2024	DELILAH RODRIGUES (24 Goals)
<i>Glebe Western Districts teams' Players' Players</i>	
GLEBE WESTERN DISTRICTS COLLABORATION PLAYER OF THE YEAR	LITIANA FIELD & ANNIE BUCKLEY
ML1 WOMEN'S PLAYERS' PLAYER	TAQUIRA MCGRATH
ML2 WOMEN'S PLAYERS' PLAYER	SARAH BRINE & CORRINA AITKEN
<i>Glebe teams' Players' Players</i>	
ML3 WOMEN'S PLAYERS' PLAYER	JESSICA HIGGS
ML4 WOMEN'S PLAYERS' PLAYER	EMILY WILLIAMS
ML5 WOMEN'S PLAYERS' PLAYER	ALICIA VAN GASTEL
ML6 WOMEN'S PLAYERS' PLAYER	JASHRI MORAR
SEHA WOMEN'S PLAYERS' PLAYER	MEG WOTHERSPOON & SOPHIA TZANNES
<i>Glebe Western Districts teams' Coaches awards</i>	
ML1 - COACHES AWARD	JESSICA WEATHERALL
ML2 - COACHES AWARD	MIKI COOPER & AIMEE BISHOP
<i>Glebe teams' Coaches awards</i>	
ML3 - COACHES AWARD	ALISHA MIDDLETON
ML4 - COACHES AWARD	AYISHA TRAVIS
ML5 - COACHES AWARD	LILLI SEEBACHER
ML6 - COACHES AWARD	AOIFE WALSH-SAMS
SEHA - COACHES AWARD	KATE DAY

MILESTONE ACHEIVEMENTS	NAME
200 WOMEN'S GAMES	MONICA BORDIGNON
200 WOMEN'S GAMES	TESSA BRUIN
200 WOMEN'S GAMES	JESSICA HIGGS
200 WOMEN'S GAMES	MICHELLE HANCOCK
150 WOMEN'S GAMES	ALISHA MIDDLETON
100 WOMEN'S GAMES	DEANNE BARNES
100 WOMEN'S GAMES	GEMMA MACKENZIE-BOOTH

MILESTONE ACHEIVEMENTS	NAME
50 WOMEN'S GAMES	JESSICA WEATHERALL
50 WOMEN'S GAMES	CAROLYN PITT
50 WOMEN'S GAMES	JESSICA KENNEDY
50 WOMEN'S GAMES	RENEE TRAVES
50 WOMEN'S GAMES	LYDIA NAJDZION
50 WOMEN'S GAMES	ALLY CATTERSON
50 WOMEN'S GAMES	KATE DAY

Roll of Honour

Roll of Honour – Women

Year	President	Honorary Secretary	Honorary Treasurer	Club Captain
1934	Jack Dwyer	Denis Donovan	-	-
1935	Jack Dwyer	Denis Donovan	-	-
1978	Molly Wark	Molly Wark	Jan Hammond	-
1979	Molly Wark	Molly Wark	Jan Hammond	-
1980	Molly Wark	Molly Wark	Jan Hammond	-
1981	Molly Wark	Molly Wark	Jan Hammond	-
1982	Molly Wark	Molly Wark	Jan Hammond	-
1983	Molly Wark	Molly Wark	Jan Hammond	-
1984	Molly Wark	Molly Wark	Jan Hammond	-
1985	Molly Wark	Molly Wark	Jan Hammond	-
1986	Molly Wark	Judy Dean	Jan Hammond	-
1987	Molly Wark	Judy Dean	Jan Hammond	Ann Rochester
1988	Molly Wark	Jill Strachan	Jan Hammond	Lisa Williams
1989	Janice Farquharson	Jill Strachan	Pauline Sunderland	Jenny Evans
1990	Janice Farquharson	Roberta Inns	Pauline Sunderland	Elaine Trodden

Year	Convenor	Women's Secretary	Women's Treasurer	Club Captain
1991	Ann Rochester	Linda Glassock	Jeanette Brazel	Jane Goldsmith
1992	Elaine Trodden	Jane Goldsmith	Ann Rochester	Michelle Opitz
1993	Ann Rochester	Jane Goldsmith	Fiona McVicar	Michelle Minett
1994	Ann Rochester	Jane Goldsmith	Elaine Trodden	Michelle Minett
1995	Ann Rochester	Cathy Busch	Ann Rochester	Michelle Minett
1996	Carole Wark	Ann Rochester	Christine McNicol	Margaret Howe
1997	Carole Wark	Carmen Byrne	Christine McNicol	Margaret Howe
1998	Carmen Byrne	Mary Wark	Neale Lawson	Margaret Howe
1999	Carmen Byrne	Mary Wark	Neale Lawson	Margaret Howe
2000	Carmen Byrne	Mary Wark	Neale Lawson	Margaret Howe
2001	Carmen Byrne	Mary Wark	Neale Lawson	Lisa Usher
2002	Mary Wark	Rachael Wilkinson	Neale Lawson	Lisa Usher
2003	Moira Williams	Gabrielle Wark	Neale Lawson	Rachael Wilkinson
2004	Moira Williams	Gabrielle Wark	Vacant	Helen Howe
2005	Moira Williams	Gabrielle Wark	Ellie Williams	Helen Howe
2006	Amy Wark	Gabrielle Wark	Kylie Lawson	Helen Howe

Year	Convenor	Women's Secretary	Women's Treasurer	Club Captain
2007	Amy Wark	Helen Howe	Kate Pearsall	Raelene Lindenberg
2008	Mary Wark	Helen Howe	Kate Pearsall	Raelene Lindenberg
2009	Helen Howe	Kate Gleeson	Kate Pearsall	Raelene Lindenberg
2010	Helen Howe	Kate Gleeson	Kate Pearsall	Angela Phillips
2011	Helen Howe	Louise Tapsell	Alex Glading	Angela Phillips
2012	Louise Tapsell	Leonie Smallwood	Alex Glading	Angela Phillips
2013	Louise Tapsell	Louise Tapsell	Alex Glading	Angela Wark
2014	Louise Tapsell	Louise Tapsell	Prue Brady	Angela Wark
2015	Melissa Newton	Emma Brady	Prue Brady	Angela Wark
2016	Melissa Newton	Carole Wark	Prue Brady	Angela Wark
2017	Kate Alexander	Laura Schmahmann	None appointed	Lynsey Askew

Roll of Honour – Men

Year	President	Honorary Secretary	Honorary Treasurer	Club Captain
1933	Edward Mockler	George Mockler	John William Taylor	-
1934	Edward Mockler	George Mockler	John William Taylor	-
1935	Edward Mockler	John William Taylor	Robert Henry Dunn	-
1936	Edward Mockler	John William Taylor	John Logan Quinlan	-
1937	Edward Mockler	John William Taylor	John Logan Quinlan	-
1938	Charlie Humphries	John William Taylor	John Logan Quinlan	-
1939	Charlie Humphries	Clarrie Eling	John Logan Quinlan	-
1940	Charlie Humphries	Jack Worley	John Logan Quinlan	-
1941	Charlie Humphries	Jack Worley	John Logan Quinlan	-
1942	Charlie Humphries	John William Taylor	Leslie Waight	-
1943	Charlie Humphries	William Ryan	John Logan Quinlan	-
1944	Charlie Humphries	William Ryan	John Logan Quinlan	-
1945	Charlie Humphries	William Ryan	John Logan Quinlan	-
1946	Jack Worley	John William Taylor	Harry Butler	-
1947	-	Jack Worley	Max Steedman	Harry Butler
1948	Jack Worley	Paul Rodgers	Harry Butler	William Ryan
1949	Jack Worley	Paul Rodgers	Fred Needham	William Ryan
1950	Jack Worley	Fred Needham	Noel Walker	Frank Murray
1951	Jack Worley	Fred Needham	Noel Walker	Frank Murray
1952	Jack Worley	Fred Needham	Noel Walker	Frank Murray
1953	Jack Worley	Fred Needham	Noel Walker	Frank Murray
1954	Jack Worley	William Francis Ryan	Noel Walker	Harry A Wark

Year	President	Honorary Secretary	Honorary Treasurer	Club Captain
1955	Jack Worley	Ray Thorpe	Alick Robb	Harry A Wark
1956	Jack Worley	Ray Thorpe	Harry Butler	Harry A Wark
1957	Jack Worley	Ray Thorpe	Jack McParland	Harry A War
1958	Noel Walker	Ray Thorpe	George Collett	Greg Harris
1959	Noel Walker	Ray Thorpe	Greg Harris	Victor Westacott
1960	Noel Walker	Ray Thorpe	Bill Stubbs	Victor Westacott
1961	Noel Walker	Ray Thorpe	Bill Stubbs	Harry A Wark
1962	Kelvin Dickey	Ray Thorpe	J Thomson/W Stubbs	Pat Nilan
1963	Kelvin Dickey	Ray Thorpe/Fred Letts	Arthur Stubbs	Pat Nilan
1964	Kelvin Dickey	Fred Letts	Brian Howe	Pat Nilan
1965	Kelvin Dickey	Frank Vanderputt	Brian Howe	Pat Nilan
1966	Greg Harris	Frank Vanderputt	Fred Letts	Pat Nilan
1967	Bill Stubbs	Fred Letts	Frank Whiteman	Robert Brown
1968	Bill Stubbs	Fred Letts	Lindsay Weate	Robert Brown
1969	Bill Stubbs	Fred Letts	Ken Wark	Robert Brown
1970	Bill Stubbs	Fred Letts	Ken Wark	Robert Brown
1971	Bill Stubbs	Fred Letts	Frank Whiteman	Pat Nilan
1972	Pat Nilan	Fred Letts	Frank Whiteman	Martin Howe
1973	Pat Nilan	Fred Letts	Keith Kipp	Robert Brown
1974	Pat Nilan	Fred Letts	Keith Kipp	Robert Brown
1975	Pat Nilan	Fred Letts	Keith Kipp	Robert Brown
1976	Pat Nilan	Fred Letts	Ken Wark	Ian Mutton
1977	Pat Nilan	Fred Letts	Ken Wark	Robert Brown
1978	Robert Brown	Gary Manou	Keith Kipp	Ian Mutton
1979	Fred Letts	Bruce Pink	Con Savva	Ian Mutton
1980	Fred Letts	Bruce Pink	Greg Corben	Ian Mutton
1981	Graeme Gilmore	Bruce Pink	Robert Wark	Les Wark
1982	Graeme Gilmore	Danny O'Brien	Robert Wark	Les Wark
1983	Graeme Gilmour	Danny O'Brien	Keith Kipp	Les Wark
1984	Graeme Gilmour	Keith Paterson	Neville Gullickson	Kevin Sweeney
1985	Peter Howe	Keith Paterson	Neville Gullickson/ Ian Treharne	Danny O'Brien
1986	Danny O'Brien	Keith Paterson	Peter Howe	Colin Rochester
1987	Robert Wark	Ian Treharne	Peter Howe	Kevin Sweeney
1988	Robert Wark	Danny O'Brien	Peter Howe	Peter Busch
1989	Robert Wark	Gary Wark	Ian Treharne	Peter Busch
1990	Robert Wark	Danny O'Brien	Ian Treharne	Peter Busch
1991	Robert Wark	Danny O'Brien	Ian Treharne	David Rochester

Year	President	Honorary Secretary	Honorary Treasurer	Club Captain
1992	Geoff Paterson	Keith Corkery	Bob Taylor	Peter Busch
1993	Geoff Paterson	Keith Corkery	Bob Taylor	Peter Busch
1994	Geoff Paterson	Keith Corkery	Bob Taylor	Peter Busch
1995	Geoff Paterson	Keith Corkery/ Les Wark	Glenn Dunn	Craig Stubbs
1996	Geoff Paterson	Les Wark	Bob Taylor	Kevin Chivers/ Amrat Parbhu
1997	Geoff Paterson	Les Wark	Bob Taylor	Kevin Chivers/ Amrat Parbhu
1998	Bob Taylor	Eddie Crook	Glenn Dunn	Kevin Chivers/ Amrat Parbhu
1999	Bob Taylor	Eddie Crook	Glenn Dunn	Shane Nilan/ Amrat Parbhu
2000	Bob Taylor	Eddie Crook	Glenn Dunn	Danny O'Brien/ Amrat Parbhu
2001	Bob Taylor	Eddie Crook	L Howard	Danny O'Brien/ Amrat Parbhu
2002	Bob Taylor	Les Wark	Mike Newton	James Wright/ Mick Bougoukas
2003	Bob Taylor	Les Wark	Mike Newton	Aaron Oman/ Mick Bougoukas
2004	Bob Taylor	Les Wark	Mike Newton	Aaron Oman/ Mick Bougoukas
2005	Bob Taylor	Les Wark	Mike Newton	Aaron Oman/ Graeme Brown
2006	Bob Taylor	Les Wark	Mike Newton	Danny O'Brien/ Graeme Brown
2007	Bob Taylor	Les Wark	Tim Sutton	Danny O'Brien/ Graeme Brown
2008	Bob Taylor	Les Wark	Tim Sutton	Danny O'Brien/ Not Filled
2009	Bob Taylor	Danny O'Brien	Tim Sutton	Adam Campano/ Not Filled
2010	Bob Taylor	Danny O'Brien	Tim Sutton	Adam Campano/ Adrian McKeown
2011	Bob Taylor	Danny O'Brien	Tim Sutton	Adam Campano/ Adrian McKeown
2012	Bob Taylor	Danny O'Brien	Tim Sutton	Adam Campano/ Adrian McKeown
2013	Danny O'Brien	Mark Paterson	Tim Sutton	Adam Campano/ Adrian McKeown
2014	Danny O'Brien	Mark Paterson	Tim Sutton	Ian Paterson/ Adrian McKeown
2015	Danny O'Brien	Mark Paterson	Josh La Spina	Ian Paterson/ Adrian McKeown
2016	Danny O'Brien	Mark Paterson	Josh La Spina	<i>Not Filled/Not Filled</i>
2017	Les Wark	Mark Paterson	Josh La Spina	Alister Cullen/ Adrian McKeown

Roll of Honour – Board

At the AGM at the end of the 2017 season and after a year of consultation, the members of the GDHC voted to accept a new Constitution which altered the Club's structure from a Management Committee to a Board format. This change brought the GDHC into line organisationally with most other hockey bodies in the country and positioned the Club for its future. Those charged with the responsibility of administering the Club continue to do so with the same commitment and passion as those on whose shoulders they stand.

Year	President	Men's	Women's	Junior's	Development
2018	Les Wark	George Manou	Kate Alexander	Sue Heath	Clare Prideaux
2019	Les Wark	George Manou	Kate Alexander	Sue Heath	Clare Prideaux
2020	Craig Martin	Adrian McKeown	Kate Alexander	Sue Heath	Katrina Cochrane
2021	Sue Heath	Adrian McKeown	Kate Alexander	Tara Taylor	Katrina Cochrane
2022	Sue Heath	Adrian McKeown	Rachael Beckett	Tara Taylor	Katrina Cochrane
2023	Sue Heath	Adrian McKeown	Phoebe Kershaw	Tara Taylor	Katrina Cochrane
2024	Sue Heath	Adrian McKeown	Mel Newton	Tara Taylor	Katrina Cochrane

Year	Finance	Administration	Communications	Sponsorship
2018	Joshua La Spina	Carole Wark		
2019	Joshua La Spina	Carole Wark		
2020	Joshua La Spina	Graham Jones		Aaron Oman
2021	Joshua La Spina	Kat Hughes	Rosa Smith	
2022	Joshua La Spina	Veronica Collins	Rosa Smith*	
2023	Joshua La Spina	Veronica Collins	Carolyn Pitt	
2024	Joshua La Spina	Ellen Kennedy	Carolyn Pitt	

* denotes resignation mid-season

Roll of Honour – Club Captains

Year	Men's	Women's
2018	Alister Cullen Adrian McKeown	Cecile Crobach
2019	Adrian McKeown Ross Bougoukas	Kat Hughes Olivia Edwards
2020	Ross Bougoukas	Olivia Edwards Tessa Bruin
2021	Mack Noller	Olivia Edwards Alisha Middleton
2022	Mack Noller	Phoebe Kershaw Michelle Hancock
2023	Mack Noller	Chantelle Hughes Gemma McKenzie-Booth
2024	Mack Noller	Monica Bordignon Gemma McKenzie-Booth

GDHC PREMIERSHIP WINS

Year	Club	Grade
1931	Men's	Third
1932	Men's	Second
1933	Men's	Third
1934	Men's	Second
1935	Men's	Second
1936	-	-
1937	-	-
1938	-	-
1939	-	-
1940	Men's	First, Second
1941	Men's	First, Second
1942	Men's	First
1943	Men's	First
1944	-	-
1945	Men's	First
1946	Men's	Third, Fourth
1947	Men's	First, Second, Fourth
1948	Men's	First, Second, Third, Fourth
1949	Men's	First, Second, Third
1950	Men's	First, Second
1951	Men's	First, Second
1952	Men's	First
1953	Men's	First, Second
1954	Men's	Fourth
1955	Men's	First
1956	Men's	First
	Juniors	U14
1957	Men's	Third
	Juniors	U14
1958	Men's	First, Third, Fourth
	Juniors	U16
1959	Juniors	U16
1960	Men's	Second
1961	-	-

Year	Club	Grade
1962	Men's	First, Third
1963	Men's	First
1964	Men's	First, Second
1965	Men's	First, Second
1966	Men's	Second, Third, Fourth
1967	Men's	Second, Third
	Juniors	U10, U12
1968	Men's	Second, Third
	Juniors	U10
1969	Juniors	U10, U12, U14
1970	Men's	Fourth
	Juniors	U10
1971	Juniors	U12, U14
1972	Men's	Second, Third, Fifth
	Juniors	U10
1973	Men's	Second, Fourth
	Juniors	U16
1974	Men's	First, Second, Third, Fourth
	Juniors	U12, U16
1975	Men's	Third, Fourth
	Juniors	U16
1976	Men's	First, Second, Third
	Juniors	U10, U14
1977	Men's	First, Fourth, Sixth
	Juniors	U12
1978	Men's	Third, Fourth, Fifth, Sixth
	Juniors	U10, U12, U16
1979	Juniors	U14
1980	Men's	Seventh
	Juniors	U12, U14
1981	Men's	Second, Fourth, Fifth
	Juniors	U14
1982	Men's	First, Third
	Juniors	U14, U17
1983	Men's	Seventh
	Juniors	U15, U17
1984	Women's	Fourth

Year	Club	Grade
1984	Juniors	U15
1985	Men's	Third, Fourth
	Juniors	U17
1986	Men's	Second
1987	Men's	Fourth, Seventh
	Women's	C Grade
	Juniors	U13, U15
1988	Men's	Fourth
	Women's	C Grade
	Juniors	U17
1989	Men's	Fourth, Fifth, Sixth
1990	Men's	Third, Fifth
	Women's	Third
	Juniors	U17
1991	-	-
1992	Women's	Second, Third
1993	-	-
1994	Men's	First, Fourth
	Juniors	U11A, U11B, U17B
1995	Men's	First, Fourth
	Juniors	U11A, U15A
1996	Men's	Third
	Juniors	U15A, U15B, U17
1997	Men's	First, Third, Fourth, Fifth, Sixth
	Juniors	U11A, U17A
1998	Women's	Fifth, Sixth
	Juniors	U11A, U15B
1999	Women's	First, Third, Fifth
	Juniors	U11A, U13A, U17A
2000	Women's	Second, Fifth
	Juniors	U13A, U15A
2001	Women's	Second
	Juniors	U11A, U11B, U13B, U15A
2002	Women's	Fourth
	Juniors	U15A
2003	Men's	Second
	Women's	Second

Year	Club	Grade
2003	Juniors	U17A
2004	Men's	Third, Fourth
	Women's	Third
	Juniors	U13B, U17A
2005	Men's	First, Third, Fourth, Sixth
	Juniors	U15B, U17A
2006	Men's	First, Sixth, Veterans (Div 2)
	Juniors	U15A
2007	Juniors	U15A, U17A
2008	Men's	First
	Juniors	U11A, U17A
2009	Men's	Veterans (Div 2)
2010	Men's	Veterans (Div 2), Sixth
	Juniors	U17B
2011	Men's	Third, Sixth
	Women's	Fourth
	Juniors	U11A
2012	Men's	Second
	Women's	Second, Fourth
2013	Men's	Fourth
	Women's	Second
2014	Men's	Fourth
	Women's	Fifth
2015	Women's	First
2016	Juniors	U11A
2017	-	-
2018	-	-
2019	-	-
2020**	-	-
2021**	-	-
2022	Juniors	U13A, U13B Hornets
2023	Women's	Seventh (SEHA Div 3)
2024	Juniors	U10 Hornets & U10 Wasps (joint Premiers)
	Juniors	U12 Hornets

***Denotes shortened season due to pandemic*

In Remembrance

In this 2024 Annual Report, we remember two Glebe District Hockey Club players that left us. We pay our respects and recognise and give thanks for their contribution and commitment to the Club and our members.

First, a eulogy given by Colin Rochester, GDHC Life Member, in remembrance of Patrick Nilan OAM.

Followed by an obituary for Billy Jardine, written by GHDC Life Member, Harry Wark.

Patrick Joseph Nilan OAM

MAY 2024

Known as “MR HOCKEY”, Pat was a Giant of the game.

Throughout world hockey, Pat was known as a brilliantly skillful forward and playmaker and revered as one of the finest players to have ever played the game.

Making his debut for Australia in 1961, Pat went on to make 73 international appearances, playing in 3 successive Olympic Games and becoming a double Olympic medalist, winning a bronze medal in Tokyo in 1964 and a silver medal at the next Games in Mexico in 1968.

His contribution to the sport extended well beyond his decorated international and representative career:

- Pat was awarded with an Order of Australia Medal for his Services to Hockey, and he was inducted into...
 - the NSW Hall of Champions and
 - Hockey Australia’s Hall of Fame.

For me, what is most striking about Pat’s hockey career and what demonstrates just how good he was, is the timeline of his hockey achievement – I would argue it’s unique and simply unmatched. Let me explain:

- 1956 – Pat started playing hockey as a 15 year old
- 1958 – he progressed to the senior ranks of GDHC
- 1959 – he was selected in 1st Grade – 3 years after he started playing hockey
- 1960 – selected to play for NSW Colts Team (U/21’s)
- 1961 – 5 years after he commenced playing hockey, Pat was selected in the NSW & Australian Senior Teams
- Pat went on to play for NSW and Australia for the next 12 years in succession!

Turning to Pat’s contribution to the Glebe District Hockey Club, Pat was a great club person – elected as a Life Member in 1971 (15 years after he started playing hockey for Glebe!!)

His contribution was enormous, and his commitment was lifelong – through almost 70 years, Pat was an outstanding player, a successful Captain-Coach, Senior Coach, Junior Coach and Representative Coach. Pat served on the Management committee, excelling as a progressive administrator, President and Club Captain and was always a wonderful supporter, great friend, and mentor – his involvement in every aspect of the Club brought Pat great personal satisfaction and great success to the club.

In 1984, the Club struck a perpetual trophy – “The Pat Nilan Trophy” in honour of his contribution to Glebe Hockey both on and off the field. The trophy is awarded to the most outstanding Club person.

There are many aspects of Pat’s contribution I could talk about, but the highlight was his first-grade career which spanned 20 straight years in the top grade, mainly as Captain Coach. To this day, Pat holds the individual record for the greatest number of 1st grade games played for the Club – 361 games.

In his 20 straight years in 1st grade, Pat played in 13 Grand Finals and won 7.

Put simply, during Pat’s 20 years in 1st grade, the club played in a GF every second year and won more than half of them.

- 13 GF in 20 seasons – is a 65% success rate!
- 7 wins in 13 GF – is a 55% success rate!

One of his long-time 1st grade teammates, Harry Wark junior, described what it was like playing alongside Pat, when he wrote:

“Pat was an athletic player, fast, nimble, and agile, with exceptional balance and poise. Pat played inside left and read the game like a book. At club level Pat was often swamped by opposition defenders, who realised the dangerous threat he posed, and they gave him extra-special attention. This made it difficult for Pat to “star” at club level. It is testament to Pat’s resilience, toughness, and durability that he was able to back up week after week, year after year, considering the special treatment he was dished-up by opposing teams, who sought to stop him by fair means or foul... it did, however, give the rest of us more room to move!”

Apart from Pat’s hockey playing record for Glebe, NSW and Australia and his status in the game, what made Pat so special and popular in hockey circles was his demeanour, his humour, and his humility.

- Pat was a hockey superstar, yet so humble – in 1972, playing in his 3rd Olympic Games, Pat sent me – a club junior, a postcard whilst he was playing at the Munich Olympics! The post card shared his trip, explained his hockey as well as his thoughts on Munich.
> An Olympic legend, sending Junior’s postcards!
- He was also a progressive coach, loved statistics, reminded us of how many effective and ineffective passes made, percentage of time on the left versus right and so on and so on - he was a genius and we listened, and we learnt, and we passed our learnings on.

Tributes have come in from far and wide this week with messages centered on Pat’s playing record and achievements but also about Pat the person, and the many stories, anecdotes and moments shared and enjoyed with him – the words & sentiment used to describe Pat showed our respect and affection, and included:

- He was inspirational.
- He was a champion.
- A legend – he was one of a kind.
- A fierce competitor.
- He is our club’s role model.
- A true gentleman in every way.
- A terrific singer – Did you hear him sing “Who killed Cock Robin?”.
- A great coach – he made us think about the game differently!
- When he spoke...we listened!
- And much more.

In my life, I've been blessed to know Pat, to play one first grade game with him and to coach with him and to be coached by him – I've had the good fortune of marrying into the Diviney/Nilan family and to see first-hand the passion Pat gave to his hockey and to us – but most of all, the love and admiration he had for his family and his friends.

Pat was a Legend and to many of us, he was our HEROwe loved him will miss him....
Patrick Joseph Nilan – God speed & Rest in Peace

Eulogy from Colin Rochester, GDHC Life Member

Billy Jardine

RIP APRIL 2024

Glebe hockey player from 1971-1985

Billy did not come up through the GDHC juniors, he started playing for Glebe in the seniors teams in 1971.

In his first year with the GDHC, Billy played 22 games for the Club's fifth-grade team. It is interesting to note that in 1971 it was a 22-game competition. In 2024 the competition has been reduced to a 18-game competition for Sydney League teams and a 15-game competition for teams in the Sydney Premier League competition.

Billy won his first premiership with Glebe in 1972 when he played in the premiership-winning fifth-grade team captained by Tony Martin, Craig and Grant's father. He was a flying, athletic, goal-scoring right wing and a regular in fifth grade for many years, winning his next fifth-grade premiership in 1975. Players in this team were Brian McKeough, Greg Howe, Glen Puckeridge, Paul Rogers (captain), Tony Martin, Frank Whiteman, Gary Scotcher, Ian Scotcher, Denis Brown, Keith Kipp, and Keith Vincent (umpire). The 1975 team played away from the other grades but it was a very social team and the after-game 'A grade Bar Club' as it was called was a big hit with the players. In 1977 Billy scored 17 goals for the fifth grade team and he was a prolific goal scorer throughout his career. In 1978 Billy, a vital cog in the team, saw the fifth grade win another premiership. A photo of the team is shown below.

By the end of the 1981 season, Billy had played 216 games for Glebe, all in fifth grade. 1981 was another fifth-grade premiership-winning year. The team beat St. George on a flick-off 4-3 after the score was tied 2-2 after ordinary time and 3-3 after extra time. It was a nerve-racking match. The Glebe players in this team were Noel Anderson, Ian Harvey, Tony Martin, Wayne Sullivan, Colin Smith, Craig Spence, Lyall Ebert, Michael Galluzzo, Scott Brown, Peter Holmes, Glen Puckeridge, Billy Jardine, and Craig Kirkland. The team captain had this to say about Billy in his Annual Report end of season-end wrap-up: 'B Jardine: Skilled left winger who scored in the grand final'.

Billy retired from playing at the end of the 1985 season having played 279 games for the Club, the vast majority of them in fifth grade. He liked playing fifth grade, he liked his teammates and they liked him. He was a quiet chap who was well-liked and reveled in the camaraderie and mateship that playing hockey in fifth grade provided. He trained very little but loved his Saturday games and had no aspirations to work his way up the grades.

Administration or coaching was not Billy's thing. He was a player and a great teammate who brought joy to his fellow fifth graders and loved the after-game social activities for which the fifth graders were famous.

The GDHC was well served by Billy Jardine. During his 15 years of Membership in the Club, he was loyal, reliable, collegiate, enthusiastic, and a contributor to the common good.

May God accept Billy into His care.

Harry Wark, GDHC Life Member and Historian



*5th grade premiers 1978 at Heffron Park, Maroubra after their grand-final win against Ryde 5-0.
 Back Row L-R: Craig Stubbs, Brian Bissaker, Graham Kirkland, Harry Wark (captain), Dave Smith, Con Savva,
 Tony Martin. Front Row L-R: Peter Casey, Paul Abate, George Manou, Roy 'the Boy' Birmingham, Billy Jardine,
 Victor Ferrari.*

FAMILY

EQUALITY

CONTRIBUTION

COMMITMENT

Appendix - Financials

Balance Sheet

Glebe District Hockey Club
As of 31 October 2024

	31 OCT 2024	31 OCT 2023
Assets		
Bank		
Cheque Account	38,185.18	36,536.22
Debit Card	645.36	959.81
Savings	-	276,337.77
Term Deposit	220,000.00	-
Total Bank	258,830.54	313,833.80
Current Assets		
Cash on Hand	500.00	500.00
Stock on Hand	32,676.38	3,152.05
Trade Debtors	30,556.00	11,808.00
Total Current Assets	63,732.38	15,460.05
Non-current Assets		
Equity Investments	2,292.00	2,280.00
Total Non-current Assets	2,292.00	2,280.00
Total Assets	324,854.92	331,573.85
Liabilities		
Current Liabilities		
GST	(375.88)	9.08
Rounding	0.01	-
Trade Creditors	1,450.46	3,568.28
Total Current Liabilities	1,074.59	3,577.36
Total Liabilities	1,074.59	3,577.36
Net Assets	323,780.33	327,996.49
Equity		
Current Year Earnings	(4,216.16)	8,856.21
Members Funds	327,996.49	319,140.28
Total Equity	323,780.33	327,996.49

Profit and Loss

Glebe District Hockey Club

2024

2023

For the year ended 31 October 2024

Trading Income

Playing Fees		
Fees - Juniors	29,260.93	29,805.30
Fees - Men	44,562.73	30,006.40
Fees - Women	39,600.00	36,152.55
Total Playing Fees	113,423.66	95,964.25
Other Revenue		
Bar Trading	7,478.80	6,864.10
Equipment Trading	(16,066.50)	(2,631.19)
Social Functions & Raffles	10,897.59	9,182.73
Sponsorship, Donations & Other	25,212.87	34,504.09
Total Other Revenue	27,522.76	47,919.73
Investment Income		
Interest Income	759.47	1,652.65
Dividends	108.00	102.00
Share Gain/(Loss)	12.00	(72.00)
Total Investment Income	879.47	1,682.65
Total Trading Income	141,825.89	145,566.63

Gross Profit 141,825.89 145,566.63

Operating Expenses

Playing Costs		
Playing Costs - Juniors	34,851.43	34,553.00
Playing Costs - Men	43,313.26	37,750.00
Playing Costs - Women	35,043.88	35,109.00
Total Playing Costs	113,208.57	107,413.00
Other Expenses		
Accounting & Audit	500.00	500.00
Administration Costs	5,706.04	2,957.00
Bank Fees	305.39	244.00
Repairs and Maintenance	2,078.87	620.00
Representative Allowances	3,000.00	6,000.00
Social Functions	14,784.09	11,879.00
Trophies	4,554.86	4,220.00
Website Administration	1,904.23	2,875.00
Total Other Expenses	32,833.48	29,297.00
Total Operating Expenses	146,042.05	136,710.42

Net Profit (4,216.16) 8,856.21

Family | Equality | Contribution | Commitment



**Glebe
District
Hockey
Club Inc.**