

# Glebe District Hockey Club Incorporated

## 2020 Annual Report



## Our Vision and our Spirit

*We are the Glebe District Hockey Club, a champion club, a club of champions.*

## Our Purpose

As 2020 passes GDHC still has no turf, however, as mentioned at the beginning of last year's report, I can inform members that the light at the end of the tunnel has become a little bit brighter.

## Our Strategy

Our strategy is to operate an inclusive, welcoming Hockey Club, competitive across the range of standards and ages, where players, officials and volunteers are encouraged to develop their skills and levels of enjoyment through access to a diversity of opportunities, quality facilities and coaching of the highest standard. We will acknowledge our long history and build on our strong sense of Club identity and spirit.

## Our Values

### Family

The GDHC is a family, an intergenerational community which values highly the mateship and lifelong friendships formed as we enjoy our hockey and our interactions with one another.

### Equality

At the GDHC everyone is equal. We are not elitist – we are a club for all. We base our attitudes on respect – respect for our team-mates across the Club, our opposition, our officials, our supporters.

### Contribution

At the GDHC we recognise that we have a legacy to pass on and so we give back across all areas of the Club. We pass on our skills and knowledge by developing our own juniors and by looking after them in the game and in life.

### Commitment

We recognise that dedication and commitment give us the results we achieve. We work hard, play hard, train hard. Our team game is characterised by innovation, fair play, sportsmanship, courage, determination and a never give up attitude.

### We are successful when

Our members experience a sense of welcome and feel connected to the Club's history and traditions.

Our members, their families and people in our community value their hockey experience and their relationships with us.

Our teams are inclusive and diverse.

Our teams persistently strive for competitive success.

Our operational and financial management enables our future growth.

Our Club is a significant and ongoing part of the life of our members.

## Life Members

1947	Mrs Ester Taylor *
1947	Jack Quinlin *
1952	Jim Kenny *
1956	Bill Ryan *
1958	Jack Worley *
1964	Harry Wark Snr *
1967	Kelvin Dickey *
1969	Ken Wark Snr *
1971	Patrick Nilan
1973	Bill Stubbs
1975	Fred Letts
1975	Graeme Gilmour*
1975	Robert 'Charlie' Brown
1977	Paul Rogers
1981	John Diviney *
1986	Molly Wark *
1989	Colin Brown
1989	Keith Paterson *
1992	Martin Howe *
1996	Robert 'Bob' Taylor
1997	Harry Wark Jnr
1997	Geoffrey Paterson
1998	Les Wark
2000	Margaret Howe *
2000	Robert Wark
2008	Danny O'Brien
2010	John Nilan
2012	George Manou
2013	Vernon Howe
2017	Peter Busch
2017	Andrew Goodrick
2018	Helen Howe
2018	Adam Campano
2019	Ken Wark Jnr

\* Deceased

## GDHC Board of Directors - 2020

### **President**

Craig Martin

### **Finance**

Joshua La Spina

### **Development**

Katrina Cochrane

### **Juniors**

Sue Heath

### **Men**

Adrian McKeown

### **Women**

Kate Alexander

### **Administration**

Graham Jones

### **Public Officer**

Joshua La Spina

### **Honorary Auditor**

Stephen W. Van

## 2018-2021 Strategic Plan

Historically the 2018-2021 Strategic Plan grew out of a recommendation by the Club's Secretary made in the 2016 Annual Report for some considered forward planning and from the picture of the Club that emerged when Les Wark, previous President, asked for an audit of our operations. During the long preparation of the document, the GDHC Board has been committed to recognising the traditions and history of our club while thinking about how to safeguard the club's future and ensure that hockey remains a sport of choice locally.

Our values of **FAMILY, EQUALITY, COMMITMENT** and **CONTRIBUTION** underpin our choices for how to take this strategic plan forward and highlight what makes Glebe such a great club to belong to.

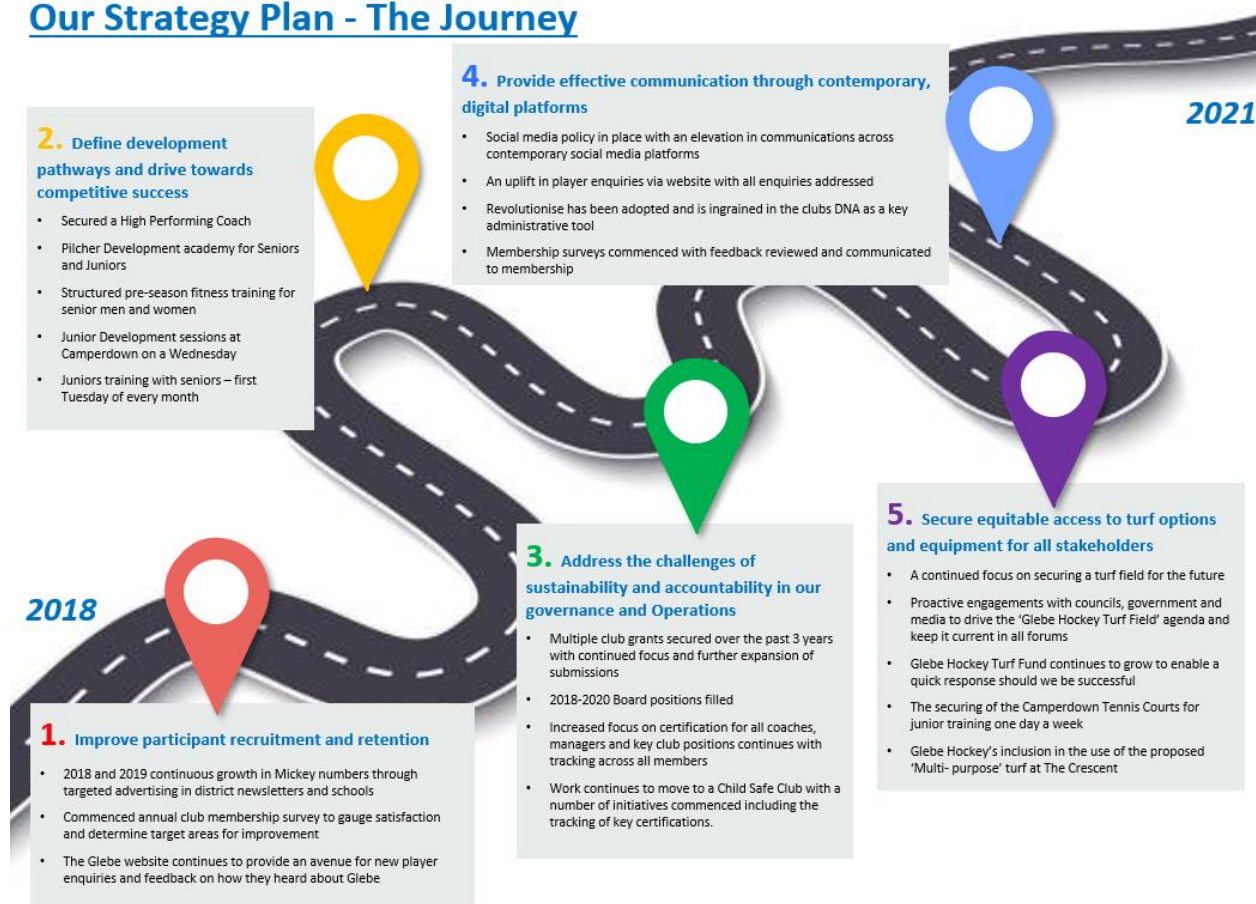
Our strategy is to operate an inclusive, welcoming hockey club, competitive across the range of standards and ages, where players, officials and volunteers are encouraged to develop their skills and levels of enjoyment through access to a diversity of opportunities, quality facilities and coaching of the highest standard. We will continue to acknowledge our long history and build on our strong sense of Club identity and spirit.

Five strategic priorities have been identified as the GDHC Board's main area of focus:

1. Improve participant recruitment and retention
2. Define development pathways and drive towards competitive success
3. Address the challenges of sustainability and accountability in our governance and operations
4. Provide effective communication through contemporary, digital platforms
5. Secure equitable access to turf options and equipment for all stakeholders

These priorities will sit alongside our governance, financial and legal responsibilities and the obligations we have with Hockey Australia, Hockey NSW and the hockey competition bodies in which we compete.

### Our Strategy Plan - The Journey



## President's Report

I would like to start by acknowledging the work done by Les Wark as President and the Board for the previous 3 years which made my introduction to the President's role a lot easier. My family has been associated with the Glebe District Hockey Club for over 60 years and part of my entire life thus it is my true honour and privilege to present the 2020 Presidents Report.

Well it's certainly been a year of highs and lows some of which have saddened us and others which have galvanised us and have seen the true qualities and values of the Glebe District Hockey Club come to the forefront. The pre-season kicked off with much enthusiasm looking towards the 2020 Season with strong numbers across Seniors and Juniors gathering at the Clubhouse as we kicked off our fitness training on the hallowed turf of Jubilee Oval. There was a great vibe and also a little bit of trepidation as the impending effect of the dreaded pandemic became a reality. Though as a Club we were unable to physically take the field we never wavered in the commitment to the Strategic Plan and Preparations as we waited for the green light to once again don the maroon and white in season 2020.

Whilst there is still room for improvement, the on-field results across Juniors and Seniors were very encouraging as we strive for further improvement. Our 3rd Grade Ladies, 3rd and 4th Grade Men were all Grand Finalists and though the elusive Premiership wasn't achieved it showed we have the ability, passion and desire to once again rise to the challenge with on field success. At very short notice our 1st Grade Ladies were given the opportunity to compete in the 2020 ML1 Competition, after discussing the pros and cons we decided to take up the offer and jump in the deep end and participate in the pinnacle women's competition in NSW Hockey. Coach Ross Bougoukas and the playing group gave their all week in week out taking on current Olympians, National Squad Members and Hockey NSW Representatives. It was a tough initiation but a great learning curve with the unwavering grit and determination on display week in week out.

Our numbers at Tuesday night Turf Training across Juniors and Seniors was exemplary to the point we extended it to Monday nights for our Men's and Ladies 1st/2nd Grade Squads and also utilised the extra time for our juniors to gain some further skills development. As an outcome with the good numbers and positive feedback from parents and players alike we will be continuing the Glebe District Hockey Club Junior Academy which will act as a precursor to the 2021 Season Commencement with the focus being on securing further access to the artificial pitch at Cintra and possibly Homebush. Your Board is currently in the early planning phase with further information to come in early 2021 and inclusion in the Clubs strategic plan. This is an exciting development providing our Juniors with World Class Coaching and Mentoring. In conjunction with this the Club will be looking to our current playing members to once again take on Coaching and Mentoring Roles across the Junior teams in season 2021.

Our unwavering pursuit of an Artificial Pitch to call our own continued in 2020 as it has for many many years with the latest update contained in the Annual Report. Be assured this will once again a key strategic focus in 2021 and years to come.

To our Sponsor's Galluzzo Fruit Market, Pilcher Residential, Saint John Espresso, JDH, Assure Wealth, Toxteth Hotel, Bakers Delight Glebe, Inner West Sports Physiotherapy & Rehabilitation Clinic we cannot thank you enough for your continued support. I encourage all Club Members to support our great sponsors where you can as they have supported the Club for many years.

Lastly, a big thank you to the board, club members, players, parents, supporters and sponsors for your unwavering commitment to getting the club through the 2020 season and our preparations for 2021 which will be the Clubs 90th Year, a great achievement within itself. In my capacity as President I deeply appreciate the support, assistance and encouragement I have received from all concerned and am looking forward to what the future will bring.

**Craig Martin**

**President**

## 2020 Turf Annual Report

As 2020 passes GDHC still has no turf, however, as mentioned at the beginning of last year's report, I can inform members that the light at the end of the tunnel has become a little bit brighter.

At the time of writing, I have received confirmation from the City of Sydney Council that the turf to be built at the Crescent will be a FIH Hockey 5's size field, which is great news as a lot of behind the scenes lobbying has gone into achieving this outcome.

The Council's current program is that they are aiming to start the consultation process with the Club and the community in early 2021. Construction of the turf is expected to commence in early 2022. Council has recently gone out to tender to find a suitable qualified contractor to build 3 artificial fields in the CoS area and the Crescent field is included in the Tender Documents.

This confirmation from Council that the field has been entered into their planning and construction program is great news for the Club. In 2022 the Club will have access to a small sized turf in the Glebe area where Juniors can play games, all players can train and play modified games

Discussions have been on going with Leichhardt Council to secure a Multi-Purpose Playing Field suitable for Hockey in the Rozelle Goods Yard site. After a meeting with all sporting codes in the municipality and surrounding areas it was identified that the present plan for the Rozelle Goods Yard site was not sufficient to meet the demand for active sporting facilities in the area.

Leichhardt Council has requested that the NSW Government and Westconnex review the present site strategy to redesign it to include as many sporting fields as possible onto the site.

The Mayor, Darcy Byrne, knows the history of our continuing battle for a field. From my discussions both he and the Council are fully supportive of a field suitable for Hockey within that area. The field would have to have a Multi-purpose element to it and Hockey would not be the only sport played on it. However, the turf laid would be suitable for Hockey.

This process is ongoing and a long way down the track and I don't see anything really starting to be happening until 2022/ 2023 when the construction of the Westconnex is nearing completion, but this could be subject to change due to political cycles. It is imperative that the Club's Board and members stay attuned to developments in the area so that the successful lobbying done to date is not lost. The Club's members have rallied brilliantly in the past and will need to do so again before we have teams training and playing on a surface at Rozelle Bay.

**Les Wark**

# Financial Report

## Overview

I am pleased to report on the Glebe District Hockey Club's financial position as at 31 October 2020 and its performance over the past 12 months. The result for the year was a loss of \$252.32 (2019 – profit of \$9,895.66).

The outbreak of COVID-19 resulted in a very disrupted year. The season was delayed on the eve of competitions commencing after a full and energetic preseason, and the inability to train for over three months meant that our Club was forced to hibernate and re-strategize in an attempt to successfully field teams in the second half of the year.

## Breaking down the Financial Statements for 2020

### Player Fees:

GDHC players were provided with significantly reduced fees, given the significantly shortened season and financial difficulties being experienced by many within the Club. We hope that 2021 will enable a full competition and therefore we anticipate regular fees will be re-introduced next year.

It was announced that those who registered prior to the season commencing in July 2020 will also have the Hockey NSW Registration Fees waived for the 2021 season, which will result in savings of approximately \$150 per player in the 2021 season.

As in previous years, the NSW Government Active Kids Rebate was utilised by many families, subsidising \$9,500 of our Junior playing fees. For families that took advantage of this Rebate, along with the discount for each additional child per family, the Junior playing fees were capped at \$100 per family.

### Sponsorship, Donations and Other Income:

As expected, club Sponsorships were reduced given this year's circumstances. However, we remain incredibly grateful to all of our loyal sponsors (Galluzo's, Pilcher Residential, Assure Wealth, St John's Espresso, JDH Hockey) for continuing to support GDHC, in light of the difficulties felt by many small businesses in 2020.

The Board is committed to creating mutually beneficial arrangements with our sponsors and will endeavour to seek further sponsorships opportunities in 2021. We encourage Club members to reach out to local businesses in the area.

The club was able to utilize funds from the Arthur Stubbs Foundation to contribute towards Men's and Women's Coaching, Junior Umpiring and Coaching Development, Equipment Purchases and Representative Allowances for our State Players.

Additionally, the Club was successful in securing NSW Government Local Sport Program Development grant for \$2,000. This grant will help to fund the Junior Development Academy commencing early in 2021.

### Social Functions & Raffles

The Annual Arthur Stubbs Foundation Fundraising Night was unfortunately unable to take place this year due to COVID-19. Despite this, the Club continued to receive generous donations to the Foundation which will be utilized to fund the Junior Development Program in 2021, continue working towards the development of our Junior Umpires and Junior Coaches, support our Men's and Women's coaches and the purchase of Technical Equipment which will enable the club to film games and training sessions to assist with game review and analysis.

The 2020 Presentation Night did not take place, once again, due to COVID-19. The Juniors and the Women held successful afternoon Awards ceremony at the Clubhouse in October and November to recognise the outstanding players and contributions of members for the 2020 season.

### **Bar Trading**

Bar Trading significantly decreased in 2020, due to the inability to host social functions at the Clubhouse, along with Junior trainings on Wednesday evenings. We look forward to hosting many Social Events and Functions at the Clubhouse in 2021 and to also encourage overall engagement at our home base in Jubilee.

### **Investment Income**

Historically low interest rates continue to impact interest income. This is forecasted to remain the case for 2021.

### **Playing Costs**

Total playing costs were down due to shortened seasons and lower association fees. Although Turf Hire for training was stable due to the club securing an additional night at Cintra on Mondays. It is hoped this will continue through the 2021 season.

As with 2019, the coaching expenses for both the Men and Women were subsidised by the Arthur Stubbs Foundation.

Costs for the Junior Club were significantly down from 2019. This was in part due to significant goalkeeping and equipment purchases last year, academy & specialist coaching being reduced because of COVID-10, reduced turf time at Camperdown Tennis courts, no field hire at Jubilee Oval and no indoor competition fees.

### **Other Expenses**

The club was able to use the funds granted by the Westconnex Grant for Archiving work completed by Max Solling. This is an important part of preserving the history of the club, as we enter our 90th year and we are extremely grateful for the work Max has done for the club.

### **Conclusion**

As we are all aware, 2020 has been a difficult year. Nevertheless, it has shown that our great Hockey Club remains resilient to any challenge it is thrown. For many, hockey provided an outlet from the chaos earlier in the year. GDHC is truly a club of champions.

To the Board, thank you for your support, patience, and good humour during an unforgettable season. To field 11 senior teams across Sydney Hockey and SWHL and 9 Junior teams was an incredible achievement.

To our outgoing Board members, thank you for your hard work and dedication this year.

Volunteers help to build the backbone of the Club, and as always, I encourage any members to put their hand up to help out - whether your contribution be big or small, it all makes a difference.

I look forward to seeing GDHC thrive in 2021.

**Josh La Spina**

**Finance Director**

# Glebe District Hockey Club

## Balance Sheet – as at 31 October 2020

	31 OCT 2020	31 OCT 2019
<b>Assets</b>		
<b>Bank</b>		
Cheque Account	60,118.70	62,901.49
Debit Card	2,877.36	1,398.19
Savings	273,948.67	272,737.63
<b>Total Bank</b>	<b>336,944.73</b>	<b>337,037.31</b>
<b>Current Assets</b>		
Cash on Hand	500.00	250.00
Stock on Hand	1,200.00	1,300.00
Trade Debtors	9,579.00	2,530.93
<b>Total Current Assets</b>	<b>11,279.00</b>	<b>4,080.93</b>
<b>Non-current Assets</b>		
Equity Investments	1,608.00	2,310.00
<b>Total Non-current Assets</b>	<b>1,608.00</b>	<b>2,310.00</b>
<b>Total Assets</b>	<b>349,831.73</b>	<b>343,428.24</b>
<b>Liabilities</b>		
<b>Current Liabilities</b>		
Grant Income	26,258.56	23,150.19
GST	1,329.39	1,053.00
Trade Creditors	11,067.93	7,796.88
<b>Total Current Liabilities</b>	<b>38,655.88</b>	<b>32,000.07</b>
<b>Total Liabilities</b>	<b>38,655.88</b>	<b>32,000.07</b>
<b>Net Assets</b>	<b>311,175.85</b>	<b>311,428.17</b>
<b>Equity</b>		
Current Year Earnings	(252.32)	9,895.66
Members Funds	311,428.17	301,532.51
<b>Total Equity</b>	<b>311,175.85</b>	<b>311,428.17</b>

# Glebe District Hockey Club

## Profit and Loss – for the year ended 31 October 2020

	2020	2019
<b>Trading Income</b>		
<b>Playing Fees</b>		
Fees - Juniors	21,232.73	23,141.14
Fees - Men	19,140.00	34,097.27
Fees - Women	22,112.72	34,657.52
<b>Total Playing Fees</b>	<b>62,485.45</b>	<b>91,895.93</b>
<b>Other Revenue</b>		
Bar Trading	650.00	3,778.91
Equipment Trading	(3,800.00)	(8,369.91)
Social Functions & Raffles	-	6,194.55
Sponsorship, Donations & Other	22,371.23	44,993.82
<b>Total Other Revenue</b>	<b>19,221.23</b>	<b>46,597.37</b>
<b>Investment Income</b>		
Interest Income	1,211.04	3,455.99
Dividends	96.00	96.00
Share Gain/(Loss)	(702.00)	738.00
<b>Total Investment Income</b>	<b>605.04</b>	<b>4,289.99</b>
<b>Total Trading Income</b>	<b>82,311.72</b>	<b>142,783.29</b>
<b>Gross Profit</b>	<b>82,311.72</b>	<b>142,783.29</b>
<b>Operating Expenses</b>		
<b>Playing Costs</b>		
Playing Costs - Juniors	12,601.04	29,866.88
Playing Costs - Men	29,573.33	35,331.09
Playing Costs - Women	24,344.17	34,104.26
<b>Total Playing Costs</b>	<b>66,518.54</b>	<b>99,302.23</b>
Accounting & Audit	500.00	500.00
Administration Costs	9,687.49	6,255.60
Bank Fees	253.23	240.00
Repairs and Maintenance	536.81	7,662.38
Representative Allowances	1,000.00	2,000.00
Social Functions	-	13,251.61
Trophies	3,614.42	3,675.81
Website Administration	453.55	-
<b>Total Operating Expenses</b>	<b>82,564.04</b>	<b>132,887.63</b>
<b>Net Profit</b>	<b>(252.32)</b>	<b>9,895.66</b>

# Auditor's Report

## AUDITORS' REPORT

### TO THE MEMBERS OF THE GLEBE DISTRICT HOCKEY CLUB INC

#### SCOPE

I have audited the financial report of the Glebe District Hockey Club Incorporated for the year ended 31 October 2020. The elected committee of the Club is responsible for the preparation and presentation of the financial report and the information contained therein. I have conducted an independent audit of the financial report in order to express an opinion on it to the members of the Club.

My audit has been conducted in accordance with Australian Auditing Standards to provide reasonable assurance as to whether the financial report is free of material misstatement. My procedures included examination, on a test basis, of evidence supporting the amounts and other disclosures in the financial report and the evaluation of accounting policies and significant account estimates. These procedures have been undertaken to form an opinion as to whether in all material respects the financial report is presented fairly in accordance with the Australian Accounting Standards and the provisions of the Associations Incorporations Act of (NSW) so as to present a view which is consistent with our understanding of the financial position of the Club, the results of its operations and its cash flows.

The audit opinion expressed in this report has been formed on the above basis.

#### AUDIT OPINION

In my opinion, the financial report presents fairly the financial position of the Glebe District Hockey Club Incorporated as at 31 October 2020 the results of its operations and its cash flow for the year ended 31 October 2020 in accordance with applicable Accounting Standards, and with the provisions of the Associations Incorporations Act of (NSW).

**Date:** 9<sup>th</sup> December 2020

**Firm:** Stephen W Van & Co  
CPA

**Address:** 2/524 Canterbury Road  
CAMPSIE NSW 2194

**Signed:** 

**GLEBE DISTRICT HOCKEY CLUB INCORPORATED**

**STATEMENT BY OFFICERS**

**FOR THE YEAR ENDED 31 OCTOBER 2020**

In the opinion of the officers of the Club: -

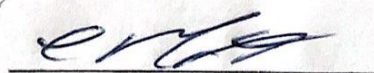
- a) The accompanying Income and Expenditure Statement is drawn up so as to give a true and fair view of the results of the Club for the year ended 31 October 2020.
- b) The accompanying Balance Sheet is drawn up so as to give a true and fair view of the state of affairs of the Club at 31 October 2020.
- c) There are no circumstances, not otherwise dealt with in the financial statements that would render any amount stated in the accounts misleading.

For and on behalf of the officers of the Club: -

Officer



Officer



Dated this

7<sup>th</sup> December 2020

STEPHEN W VAN & CO  
Certified Practising Accountant & Tax Agent



Stephen W Van B Comm.CPA

ABN: 83 264 931 510

PO Box 767  
KINGSGROVE NSW 1480  
2/524 Canterbury Road CAMPSIE NSW 2194  
Tel: (02) 9718 6725  
Fax (02) 9718 1569  
Email:stephenvan@bigpond.com.au

**Auditor's Independence Declaration  
For the year ended 31 October 2020**

In relation to my audit of the financial report of Glebe District Hockey Club Incorporated for the financial year ended 31 October 2020, to the best of my knowledge and belief there have been no contraventions of the auditor independence requirements of the Corporations Act 2001 or any applicable code or professional conduct.

STEPHEN W VAN & CO

A handwritten signature in black ink, appearing to be 'S. W. Van', written over a light blue horizontal line.

STEPHEN W VAN

SYDNEY: 7<sup>th</sup> December 2020

*Liability limited by a scheme approved under Professional Standards Legislation*

## Development Report

The season started off strong with a great turn out for Pre Season fitness training. It provided an opportunity to work on our fitness, welcome new members to the club and catch up with teammates while preparing for the season ahead.

We had players from all grades in Senior men's and women's and it was fantastic to have our older juniors also joining in. With a variety of Endurance, Strength, Agility, Power and Speed exercises and activities, we were off to a great start. With time trial runs around Blackwattle Bay and Glebe, using power bands and agility ladders and combining some boxing sessions, my favourite part was the enthusiasm and motivation each player had for every session. As a club, we were encouraging and supporting each other, and what a great sightseeing our players demonstrating their speed when running across Jubilee oval with a Speed Resistance Parachute flying behind them!

We then stepped into our skills sessions across the club and our strongly contested team trial games for our junior Redback teams and Senior grades. A big thank you to all the coaches, club captains and selectors who assisted with the trial games and team selections over a few busy weeks of hockey. A special thank you to our internal selector Claire Prideaux, and external selector Helen Howe who volunteered many hours on the sidelines and in consultation with club captains and directors were in a position to select our playing squads for 2020.

The weather wasn't really our friend at the Glebe at Glebe evening, however the rain did not stop our juniors and new members turning up and working through a range of fun drills and games led by our super star senior men and women. We also had the opportunity for our upcoming umpires and coaches to commence or continue with their umpiring and coaching accreditation process. I strongly encourage all members to take up this opportunity next season. It is fantastic to see enthusiastic, junior and senior players, parents and keen club supporters wanting to upskill and understand the umpiring and coaching process.

We had many enthusiastic Juniors and Seniors nominated for representative teams this season and had the opportunity to trial and be selected for SEHA, School and State representative squads. It is fantastic to see such a large contingent of Glebe players stepping up and developing at a high level and enjoying the opportunity to enhance their playing performance.

We had just started off our training sessions, our Junior, Men's and Women's Directors had worked hard appointing coaches to each team, we were enjoying our run on the pitch as a team and ready to start the season when of course we all know what happened next.

In my career as an athlete, trainer and coach - as is the situation for everyone else, COVID produced something we have never experienced and had us needing to work on strategies and solutions to ensure our family and friends were supported in unknown circumstances. It also demonstrated just how great Glebe Hockey club is, not only as a sporting club but as a family club. We came together and prepared for our return as soon as we were provided the opportunity.

I cannot thank the coaches, managers, board members, parents, and of course, our players for returning to some of the most interesting restrictions we have ever had in training.

The coaches need to be applauded for all their planning and preparing to ensure that we were upholding and implementing COVID regulations and adapting their sessions on the spot on a regular basis and learning to use zoom for meetings and catch ups.

Whether it was ensuring only 10 players in each half or quarter (including the coach), not allowing to tackle, needing to have all players no closer than 1.5m on and off the field, players only allowed to touch the ball with their stick, coaches needing to set up markers and drills individually without the assistance of players or managers, disinfecting every piece of equipment after each training session (remember we have coaches

who train more than one session - so this was quite important) and of course parents and spectators not allowed to stay at training sessions, we all appreciate what was required and I thank everyone for being so supportive of our coaches and managers.

Once back into the swing of things, we all learnt to adapt to what was now required. Although we could not have spectators within many of the grounds/fields/facilities, I really enjoyed seeing parents lining the fence line, all socially distancing and still supporting the coaches, managers and players any way possible.

We continued to play-out our shortened season and although we did not get the opportunity to participate in representative teams, and we were limited on our development sessions, I would personally like to thank Ken Wark and Craig Martin who were available to assist with specialist coaching sessions with our Junior Redback Teams and Senior Men and Women Teams every Tuesday. I would also like to thank Terry Kelly and our first grade women's goalkeeper Aisling "Ash" Klimoski who made themselves available to help coach and develop our current and keen junior goalkeepers on Tuesday evenings.

After a shortened season and once we were advised that Indoor Hockey was going to be limited across Sydney and the State, at the completion of the junior season, we provided Junior Development Training Sessions over a 6 week period to ensure our juniors had the opportunity to remain engaged and have the chance to work with our elite coaches and players within our club. I personally would like to thank Terry Kelly and Ross Bougoukas for their assistance every week. Ross is our Men's Club Captain, First Grade Men's player, and First Grade Women's Coach and Terry is our first grade men's Manager and club legend. Both Men assisted with sharing their knowledge and experience for the Development Training sessions every week. Terry was awesome at providing specialised Goalkeeping coaching and was supported by First Grade Keeper Aisling over the 6 weeks.

Ross not only trained the juniors for the 2 hour period, he would then stay and coach first grade women and any junior players who were keen to stay for some extra training. It was impressive to see Ross adapting to different age groups and individual level/ability at these sessions and really personalising each skill and drill for players ranging from U9 - 1st Grade.

There is nothing better to have club legend Ken Wark and Club President Craig Martin available to also coach our juniors whenever they are available, sharing their wealth of knowledge and experience and just knowing the benefit this knowledge and passion for our sport has on our juniors is very inspiring.

So, as the most unusual hockey season comes to an end, I would like to take this opportunity to thank my fellow board members, who have been amazing all year, and of course all coaches and managers who continually planned and prepared training sessions and ensured that every player experience was the best and most enjoyable it possibly could be.

It never ceases to amaze me the passion and enthusiasm we have within our club to just make things happen and ensure as a club we support and work together to make individual, team and club experiences the best we can.

I am very excited about development opportunities for 2021 and look forward to seeing our juniors, seniors and club grow and develop and achieve new milestones.

**Katrina 'Shorty' Cochrane**  
**Development Director**

## Junior Report

It is my absolute pleasure to present to you our Glebe Juniors Annual Report and officially close our season for 2020.

When we gathered at Glebe@Glebe in February this year, we were full of hope and enthusiasm for the season ahead. We registered players, established teams, reconvened committees and charged forward to ensure our Juniors were ready for the start of the season in March. Five weeks later we came to an abrupt halt, with little confidence at that point that we would play any hockey at all.

As we patiently waited through the four months that followed, we finally received the ok to kick start the season for the second time. COVID-19 changed the way in which we connect, and our Juniors were asked to work within a number of important guidelines. Guidelines to keep them safe and give us every chance of continuing to offer them a competition. Our front cover of the annual report, a socially distanced U11A Reds, speaks volumes.

Whilst a shorter season has been played out for 2020, and without our annual Juniors Carnival, it has been an incredible run and you must all be congratulated and acknowledged.

Our Club spirit is very much alive. Our Juniors are incredibly resilient and passionate, and our Coaches and Managers so very generous of their time. There is genuine care for our kids, genuine support, and a genuine desire to help them achieve.

This season has been challenging, of that there is little doubt. But through all the frustration, confusion and fear, we fielded an impressive 9 Junior Teams in the SEHA and Metro competitions. Our Junior Umpire numbers increased, our Junior Coaches continued to develop their skills, and we delivered another successful Minkey program for our youngest of kids. All things considering and regardless of where teams finished on ladders, we have much to be proud of.

Contribution is a key value of our Club. It is through the generous contribution of our 11 Coaches and 12 Team Managers that we continue to offer hockey in our local community. Thank you team, for the positive impact you have on our players and on our brand as a Club.

A strange year called for a strange role to be fulfilled, our COVID Coordinator, Veronica Collins, kept us honest and up to speed with the many rules and guidelines that were forever changing. Veronica, your guidance and support from ghost writing emails to producing plans and purchasing hand sanitiser for all our Junior Teams, was so much appreciated. Thank you.

To Peter Bestel our Juniors Umpire Coordinator, thank you. Your continued contribution and commitment towards our umpire development is admired by SEHA and associated Clubs. We are incredibly lucky to have your support. Thank you.

And whilst our season was somewhat hard to drive at times, our Juniors Committee came together at the critical point to ensure our important Club Award nominations were reviewed and voted upon with the integrity they deserve. Thank you.

The energy room behind the scenes should also be called out, with a huge thanks to Ann Morey and Carmel Lazarus for their contribution to the completion of so many administrative tasks that are a must for all Clubs. Thank you.

Thank you also to our Club President Craig Martin and my fellow Directors. Thank you for your guidance and support for our Juniors.

And to all of our GDHC Parents and Care Givers who have stayed connected through this crazy year. Collectively, your contribution to making GDHC a Club that is a social magnet, a supportive Club, is such a positive legacy for new Parents to engage with. Thank you.

And finally, we say farewell to our 6 Juniors who leave us for our senior competition. Olive, Peter, Rebekah, Josh, Ben and Nicky, combined you have played 575 games for our Club and you have played them with much passion and commitment. You have represented GDHC with much respect, and for that alone I thank you.

I look forward to seeing our Juniors prosper and grow in 2021.

Take care,



**Sue Heath**  
**Juniors Director**



***Sue and Cate Heath***  
***2019 Juniors Presentation Night***

## Administration Report

When I first accepted the role of Administrative Officer for GDHC I thought what a great way to get further involved, learn about how the club runs and in time provide input into the next steps to the success of GDHC. Well, what I didn't know was that I would not be undertaking a 'normal' year. Far from it.

I, like everyone else, didn't count on COVID coming in and taking over what everyone was telling me was a great start to the hockey season. Great preparation, a strong player base, solid numbers at training and plans in place to continue to develop and grow. COVID ensured I had consistent stream of emails from all hockey associations reminding me and the club of, firstly our impending shortened season and secondly the rules and process we needed to follow to ensure the season continued to the end. There were hundreds of emails I passed onto the Men's and Women's Directors to ensure we continued to abide by the regulations. At this point, I would like to thank Veronica Collins who volunteered her time and knowledge to help us all navigate the season. Veronica's in interpreting of the guidelines and then personally working to ensure we abided by them proved to me that there are extraordinary people in this club.

So, we were expecting a GDHC 90<sup>th</sup> Year Celebration, a Presentation Night at Sydney University and the photos of trophy winners all through the Annual Report. None of this was possible. The Board consistently played out various scenarios to see what might be possible but as we needed to follow the Government rules it became increasingly obvious that we just couldn't have the numbers at an indoor venue. Thus, the decision to have the presentation outdoors at the clubhouse and defer the 90<sup>th</sup> Year Celebration to 2021 was made.

The Board continues to plan for the future, and will again work to deliver additional training nights, a solid plan for both senior and junior development and work tirelessly to bring the club together socially with more events planned for 2021. From the outset every decision made by the Board was framed around the 2018-2021 strategy. This strategy was revisited in our end of season 'Planning Day' and will continue to guide the Board.

In any case, I know this year was different, although I have nothing to reference to define how different. I know that the Board works hard to make a season 'happen' and that each decision is aimed at delivering the best for each member. I know next year we need to reach out and work with our sponsors to help rekindle the relationships that were tested this year. It was a very hard year for them, and we should support them in 2021. I especially know that unless you are on the Board and volunteer to be part of the decision making you don't get to live the passion that goes into making this club so special.



*My memory of Season 2020 – watching hockey from 40m away and through two fences.*

**Graham Jones**

## Men's Director

2020 was a big year! For me, it was my first year on the job as Men's Director, taking over from George Manou. I wasn't sure how to approach the job, so in the short term, set myself the goal of engaging with the players, coaches and Board members to make sure the club gave itself the best chance of hitting the ground running at the end of March with game one of the regular season.

Things were looking good. All 5 x men's teams were training hard and well prepared. Coaches and managers had come forward and teams had been pencilled in following trial games against Briars. Players were competing for spots in the Premier League sides. Coaches were jostling for players. Morale was high and we were ready to go.

News reports coming out of China and Europe were getting more serious. A novel coronavirus had well and truly jumped China's borders and was sweeping the world. It was headed our way and things looked bad. It was easy to think that the whole thing would be contained, even blow over as it had with the SARS virus in the early 2000s. A cruise ship unloaded infected passengers and the plug was pulled from the regular hockey season by Sydney Hockey.

Before we knew it, we were battening down the hatches as emails and phone calls started to fly around. Businesses closed their shutters and Glebe's family started to work from home. A Pakistani international player, Aleem Bilal (full back) arrived and started training with 1st grade. His fellow countryman Mohammed Arif (a striker) wasn't so lucky. Borders closed before a visa could be granted and international travel stopped.

The Board of Glebe Hockey scrambled into action, advising players that things were on hold until such time as a season draw could be re-drawn by Sydney Hockey. Everyone had to get up to speed overnight with technical fixes including how to hold a Zoom meeting and what to do at the end of 40 minutes when the line was cut off! Communication occurred via email, Zoom, Whatsap and text messages.



***4th grade players warming up for their preliminary final, Lidcombe.***

As things settled down in Sydney, the season commenced in a new CVD-19 safe way. Players adapted to having to sign in and out of hockey grounds using phone aps for contact tracing. Players were no longer allowed in dugouts and stick checks replaced handshakes at the end of the game.

Whilst these were big changes to the way hockey is played, players adapted quickly. Everyone was just so thankful that hockey was being played. Our friends in Melbourne, the USA and the UK weren't so lucky. Melbourne went back into full lock down when up here in Sydney, we were playing hockey. Social gatherings commenced cautiously in small groups.



***Clockwise from left: First Grade Coach Jai Singhota, Mark Paterson with parents Geoff and Maureen, 2nd grade coach Michael Bougoukas and Glebe legend Ken Wark discussing tactics.***

Overall, Glebe's Mens teams had some good results this year. 2nd grades finished at the lower end of their competitions but 1st grade (7th of 9 teams) narrowly missed making it to the finals. 3rd, 4th and 5th grades had solid seasons, with 3rd grade (2nd out of 11 teams) and 4th grade (minor Premiers) leading the club's hopes all the way to their respective Grand Finals.

Unfortunately, both Grand finals were lost. 4th grade lead by Captain Brad Goodridge went down in a penalty shoot out to Ryde after a 1 all draw at full time. 3rd grade, under Aaron Chopper Nilan went down 6-0 in their Grand Final against a Ryde team that was simply too good and that showed no signs of the cumulative hamstring injuries that beset Glebe's strikers. Chopper has announced that he will be taking a couple of years off to give his body a rest and focus on other things. Chopper's enthusiasm for winning is infectious and will be missed until he comes back in a few years' time.



***Captain/coaches: Aaron 'Chopper' Nilan (3rd grade) and Brad Goodridge (4th grade).***

All of the coaches and managers have done a terrific job this year and deserve a special mention. Starting with Club Captain Ross Bougoukas who has sent out the selections every week and got everyone to where they need to be each weekend. 1st grade's coach Jai Singhota got the boys training hard this year, with numbers holding firm all the way to the end of the season. Jai was assisted by Manager Terry Kelly who marshalled the troops between games and on game days.

Second grade's coach Mick Bougoukas was assisted by manager Craig Martin. The second grade squad is full of talented players and things are looking bright for 2021. 3rd Grade was coached and managed by Chopper Nilan and 4th grade coached by Brad Goodridge and managed by Scott Noble, Eddy's dad. 5th grade self-coached this year and had a good season.



**New parents: Michael Monforte (5<sup>th</sup> grade) with Kelsie, Gareth Mealing (4<sup>th</sup> grade) with Phoebe and Aleks 'Mouse' Manou (1<sup>st</sup> grade) with wife Samantha and daughter Octavia.**

It has been an honour to be a member of the club Board this year and I am extremely proud of the what has been achieved under intense pressure. New President Craig Martin has steadied the ship and all of the Directors have done great work. The club has been in good hands throughout the crisis.

I am very thankful to Kate Alexander, seasoned Women's Director, who has always been happy to share her thoughts on how to manage multiple teams and how to delegate down through the ranks. I have also learned a great deal from Sue Heath, Glebe's Juniors Director. Sue's enthusiasm and energy inspires to the whole Board. Katrina Cochrane (Shorty) put all her energy and knowledge towards developing the players this year and has grand plans for 2021.

Working hard behind the scenes were Board members Josh La Spina (treasurer), Graham Jones (communications), and Aaron Oman (Arthur Stubbs Foundation). Special mentions from me go to Aleks Manou for managing Glebe's excellent social media strategy and Gareth Mealing for his work in getting what events we have been able to hold this year hooked up with lights and sounds.



**The Glebe Hill: watching 3rd grade Grand Final at Homebush P2.**

I am really looking forward to the road ahead now that a vaccine has been announced as looking promising. It will be a while until things get back to 'normal' conditions where we can hold larger social gatherings including presentation nights. But it is only a few short weeks until the 2021 season commences with pre-season fitness training already in the pipeline. See you soon Redmen!

**Adrian McKeown.**

**Men's Director.**

## Premier League PL1 – First Grade Report



**Front row:** Terry Kelly (manager), Jai Singhota (coach), Andrew Rice, Dylan Howe, Mack Noller, Mark Paterson, Ben Martin, Daniel Van Der Merwe, Sam Alexander-Prideaux

**Back row:** Aleem Bilal, Jake Riborowski, Dominic Tintner, Tim Pritchard, Shane Martin, Ross Bougoukas, Ben Smith

The 2020 season has been a very challenging season due to Covid and the associated risk and requirements plus the shortened schedule.

Hopefully, next year we can revert back to a normal season and continue the transformation journey.

### Challenging

It was once again very disappointing not to finish in the top six and more so because we were only short of achieving this outcome by two games. We all know which two games those were.

### Future

There have been some critical lessons learnt during 2019 and 2020 for the whole TEAM which includes the players, the coaching and management staff. Some examples are:

- Overseas players management structure
- Player fitness
- Coaching style up-lift/variation
- Additional training sessions post-season and/or pre-season
- Recruiting including short term and long term

The overseas players program has had some challenges and benefits for the club. Challenges include logistical entry requirements and communication. Benefits include that the overseas players contribute to coaching juniors and umpiring.

### Opportunities 2021:

1. Proper requirements analysis to aid with player selections.
2. With hopefully a more 'normal' season, more input to coaching juniors and seniors across the whole club.
3. Introduce leadership roles for senior players.

Player's Player: Mark Paterson

### Jai Singhota

#### First Grade Coach.

## Premier League PL1 – First Grade Manager's Report



**Front row:** Ross Bougoukas, Sam Alexander-Prideaux, Tim Pritchard, Dominic Tintner, Aleks Manou, Daniel Van Demerwe, Mack Noller, Mark Paterson.

**Back row:** Jai Singhota (coach), Ben Smith (GK), Joe Clear, Ian Paterson, Aleem Bilal, Shane Martin, Ben Martin, Dylan Howe, Terry Kelly (manager), Ken Wark, Mitchell Brain.

It was great to be asked to assist in managing the Glebe First grade team for the season. We began training in February with high hopes for the 2020 season and Jai Singhota and I meshed well in organising the team and planning a training and game philosophy. Our plan was aimed at least getting to the finals. We set the team up with a new team structure, focusing on an organisation on and off the field. This was imperative to achieve success during the season.

### Management Structure.

A cornerstone to our structure was setting up a leadership group, headed by the Captain Mark Paterson. The group also included, Ross Bougoukas, Ben Smith & Shane Martin. This group emphasised a need to control the game across the team structure, from Attack, Mid Field & Defence. The intention was that these players input during the game would strengthen the game plans & game day preparation & execution.

Our training regime started off well, the trials games, gave us confidence that we were on track to perform well during the season and then Covid-19 Struck. Our training went out the window and a lull in training set in until July. Three months of no activity.

Then came July, with the prospect of resumption of the start to the season. We had only a couple of weeks to prepare. The team needed to consolidate, and we simply did not have the time to bed down a suitable structure.

### The Season.

With gritted teeth we went into the first game and against the top gun, Moorebank. The result said it all, 8-1 Loss. But there were positives from that game. As a management team, we got a good look at the players

and could now identify where our strengths lay as well as the weaknesses. In that the first game, was the best game to be thrown into, as it tested the player base we have.

That loss, from my observation had a psychological effect moving forward, as the next three games testified. A nil all, against Manly, A 1-7 loss to UNSW (who we played well against in the trial game. 2-4) and then a 4-4 draw against Briars. Mistakes in attack and Defence let the side down and Jai and I had to recalibrate. This is when after discussions with Mark and the leadership group set us on a new path at training concentrating on the issues that came out of those games.

### **A Training Philosophy for the Future Begins.**

Our new training regime, with Jai providing the technical input and Mark putting it into practice, produced results. The leadership group stepped up a notch and the emphasis on skilling at pace was intensified.

Our efforts paid off in our next game against another gun team Sutho. A 4-2 loss, but a good result for the team, in that we held our own, where the team performed above expectations. We were definitely in that game and had our chances putting pressure, constantly at their 23 metre attack position. It clearly rattled them.

Unfortunately, the team plateaued after that winning against South East Sydney 1 nil, and then a 3-1 loss to Sydney Uni. Both these games, our attack formation let us down. Finishing is a problem for the team. This comes down to a skill level and requires certain players to focus on their skill level in shooting.

This has let us down in many other games where the opportunity to score alluded us. Moving forward this needs to be addressed with individual and group training in this aspect of our game. If we are to continue with the player base, we have on hand. Again, we went back to the training ground to upskill our performance in these areas. The team was drilled in our shapes in attack.

Our last three games were a mixed bag. A thumping to Northern districts 7-nil. Again, we could have done better on the score board. The same mistakes were there in a winning game. It won't do against the big teams.

The last two games, where the training did bear fruit. A 4-nil loss to the eventual PL1 winners, North West Strikers. But we were in the game. We constantly put pressure on their defence, but our striking ability let us down. Time & time again that game we looked to score, but skill let us down.

Our last game highlighted the other problem we encountered during the season. Defence. Like the NWS game we put pressure on Ryde, but our defence formations and lack of detail let us down. We were in the game, putting pressure on their base line. But we could not finish. A 3-6 loss was the result.

### **So, to sum up the season, I see it this way.**

Our strength is in a growing awareness within the team that they can perform under pressure with the big teams but need considerably more upskilling to do so. We have a number of junior players coming through, that need specialised training to get them to a level to compete against the big teams. This takes time and effort on their and the coaching team's part.

Our weaknesses are in that lack of skill within the team. We can't continue to rely on a handful of seasoned players to accomplish a result. It takes the whole team. We have formulated a strong coaching structure this season, with Jai, Mark & Kenny. Along with the leadership group this has brought results. But, clearly, a lot more work needs to be done in the skill level of the team.

Stronger defensive & attacking structures. Programs we attempted to put in place but unfortunately were hampered by lack of time and a short season. I believe if we continue on this path, with the current management group mentioned above, we will succeed. Not necessarily next season, but certainly into the future.

Special thanks to Jai, Kenny, Ross, Ben Smith, Shane Martin & Mark for their devotion to the team. Thanks to Katrina (Shorty) for helping out with the movies of the games. A great job well done. To all those boys that participated in the team, I am proud of the way you performed and lifted yourself during the season.

Sam, Aleem, Joey, Mouse, Ben Martin, Tim, Dom, Daniel, Maka, Andrew, Mitchell, Bruce, Dylan, Correy.  
(my apologies if I missed someone).

I am also proud to belong to a great Club, Glebe Hockey.

**Terry Kelly.**

**1st Grade Manager.**

## Premier League PL2 – Second Grade Report



**Front row:** Josh La Spina, Darren French, Victor Dunand, Corey Morrow, Mack Noller, Dave Reid (GK)

**Rear row:** Craig Martin (manager), Cam Jones, Aiden Corben, Dylan Howe, Ed Noller, Rodrigo Pedraza-Luna, Mehdi Rizviz, Jake Riborowski, Mick Bougoukas (coach)

I would like to take this opportunity to thank the board and committee for all their work during the season. This was a short but full on season with only nine games + finals.

We needed to make the most of every game, unfortunately we just didn't achieve our goal with a couple of games that we were expected to win but didn't. In saying that I would like to congratulate all 20 players who contributed to the team, with their commitment, dedication and camaraderie this was 2nd to none. It was a real honour and privilege to have been a part of this team.

As The coach of this team it was pleasing to see that when results didn't go our way every member of our team took responsibility for the team's poor performance. When the team did well every player was quick to praise their teammates. This proved to me that every player was playing for their teammates not for themselves.

It was good to see the old Glebe tradition continuing on.

I believe with their continued development and training there is no reason why all of these guys cannot be in first grade in the next year or two. Keep up the good work!!

PLAYERS PLAYER this year were:

1ST David Reid 138

2nd Dylan Howe 76

3rd Mack Noller 75

I would also like to thank Craig Martin as our team manager for all the work you did for us and Ken Wark for his assistance and advise during this season thank you both very much

**Michael Bougoukas**

**Coach**

## Premier League PL3 – Third Grade Report



**Back row (left to right):** Anthony Wark, Patrick Wark, Chris Farrigua, James Martin, Sam Bagley, Aiden Corben, Paul Jowett, Craig Martin.

**Front row (left to right):** Emmerson Weiley, Rodrigo Pedraza-Luna, Andrew Cheong, Aaron Nilan, Michael Wark, Adam Campano, Zach Farlow.

**Missing:** Riley Harper, Orlando Travis, Tyeson Hickey, Brad Goodridge, Matt West, Jackson Howe, Suresh Raja.

2020 Results:

Played 10 round games - 7 wins, 2 draws, 1 loss.

29 goals for and 12 against, finished 2<sup>nd</sup> place on the ladder

It was always going to be another tricky season for this group of players. The results of last season didn't really reflect the potential of the team, and so we had a point to prove. The playing roster for this year was similar to the 2019 season. With only a handful of players not returning, the team was boosted by some younger, fitter and very keen players from the lower grades.

The delayed start to the season seemed to suit us well. However, due to game day restrictions, it was a nice change to get to the field later, have a quick chat and then get out and play. It felt more relaxed and things were looking on track for another good season with the team having results fall in our favour early on. The attack in the first few games of the season was strong, with scoring goals from a lot of opportunities. We were then tested mid-season with a draw and a loss. This coincided with injuries starting to slowly creep into the team and almost felt like things were not going to get back on track. It was at this point when the defence stepped up and kept the team in a good position on the competition ladder.

Without scoring many goals up front we won our games due to our excellent and passionate defenders keeping the ball out of our net. Helped by fullbacks and the half line, but special mention to Emmerson in goals this year who had a cracking season, saving us on many occasions.

With the positive results on the board towards the end of the season, it was clear we were going to be in the top six and playing in the finals.

The last round game vs Ryde was going to be a test to see if Glebe would be competitive in the final series and no matter of the result, we knew Ryde were walking away with the Minor Premiership. In the end we had a lucky win, and with other results going our way, we ended up being promoted to 2<sup>nd</sup> position on the ladder. For me, the highlight of the year and a game I will remember for a very long time was the win against Sutherland in the preliminary final, with the winner to make it to the Grand Final. Against all odds, many injuries and going into second period of drop off extra time, we came away the win. Grand Finals are few and far between and for the team to be once again playing in another grand final was exciting. Even though the result didn't go our way on the day, I could not fault the efforts of the whole team.

It was good this year to have numbers on the bench each week to help out so the older guys could manage their injuries and fatigue. It was a successful season and I would like to thank all players for their efforts throughout the year, at training helping with drills, before or after games with team talks, off the field helping with subs and general support on the field, playing your hearts out.

A particular mention of thanks should also be given to Harry Wark Jnr for his constant support to the team as well as the in-depth match reports each week. It was always good to read as Harry gave honest and truthful recounts of the game and this was a useful tool to use for the following games.

It is with great pleasure to announce Andrew Cheong as the player's player for 3<sup>rd</sup> grade. He was awarded points in every game of the season, played out of position when needed, was a key member of the team that always put in effort each game and supported the up and coming young players in the team.

Hope everyone enjoys the off season and is able to spend more time with family and friends.

**Aaron "Chopper" Nilan.**

## Sydney League SL3 – Fourth Grade Report



**Back row:** Brad Goodridge, Suresh Raja, Matt West, Edward Noble, Zac Macpherson, Zane Goodridge, Orlando Travis, Jamie Travis, Jackson Howe, Peter Bush  
**Front Row:** Ivan Gorrige, Nicky Vera, Paul Diaper, Gareth Mealing, Tyson Hickey

Well to say this year's team was a mix youth and experience would be an understatement, we came together with hardly any of us having played together before. Four U15's two under17's, some guys returning from last year and a few guys returning from a few years off. Having been away from senior hockey for 6 years I took the chance to play this year with my son (Zane) along with another parent Jamie Travis and his son Orlando. As we managed to keep the same group of players together for the short season there was the chance for success.

Playing in Sydney League 3 looked to fit well with the skill level of the team, and we started the season with a couple of good early wins, which helped the younger players get into the swing of senior's hockey. The unknow of the competition was if those first two teams were the reflective of future competition. As we soon found out it got harder, but the team withstood the challenge and pulled out the wins as we managed to go throughout the year undefeated and take the Minor premiership. The younger players matured throughout the year and the experience greatly benefited their games.

There was an even spread of goal scorers with our talented NSW 15 rep Orlando Travis taking out the leading scorer with a total of 7 goals, from the field, corners and a penalty stroke. Players Player was taken out by our versatile Paul Diaper, who's game in as GK in an emergency was decisive.

<u>Leading Goal Scorer</u>	<u>Goals</u>	<u>Players Player</u>	<u>Points</u>
<b>Orlando Travis</b>	<b>7</b>	<b>Paul Diaper</b>	<b>83</b>
Brad Goodridge	4	Orlando Travis	77
Zane Goodridge	3	Zane Goodridge	62
Gareth Mealing	3	Gareth Mealing	51
Jamie Travis	3	Jackson Howe	50
Matt West	3	Brad Goodridge	44
Tyson Hickey	3	Matt West	41
Jackson Howe	2	Zac McPherson	37
Zac McPherson	2	Edward Noble	36
Peter Bush	1	Nicky Vera	31



*4<sup>th</sup> Grade Players Player Paul Diaper showing his versatility, with a game in goals.*

## Finals Campaign

As we had progressed to the major semi-final there was a tough game in waiting against the old rivals Ryde, who had a similar team to us with some old and young. The semi-final pressure got to us in the first quarter of the game and a goal was let in which proved to be the final score. We managed to turn the game around and mount a lot of pressure but were unable to score, losing 1-0.

Having a second chance in the finals was the reward for the minor premiership and we played that game like the best team in the competition as we wore away St George and beat them 1-0. The goal came after good build up play, scored by Zane Goodridge, although there were a few opportunities just missed and one that we thought went in the goal but the umpire's eyesight was not up to the job, anyway through to the Grand Final against Ryde again!

The Grand final started much better than the major semi, and we battled it out hard with Ryde through the first half, but once again not able to score. During the second half Ryde were able to steal a goal from a misstrap to take the advantage. This was a setback but the team were up to the task and managed to get back into the game with a short corner goal from Orlando Travis. Final score 1-1, which meant extra time with drop-

off, unfortunately we could not get the goal and were forced to one on ones. We were unlucky to lose the one and one's by 1 goal after some high-tension play and great goal keeping by Nicky.

### Thanks

It's not without some help does a season like this come together so well for a player coach. Thanks to Scott Noble, for his manager skills and cleaning up the blood spilt. Thanks to Jaime Travis and Gareth Mealing for their advice on opponents. Thanks to Peter Bush for helping during the final rounds and finals, as he got the sideline running smoothly and handing out advice and coaching the team along the way.

It's was also a pleasure to play with whole team and it was a great season. One I enjoyed playing with my son and his U15 team mates who I have coached to U11 glory in the past, along with their parents playing or helping in one way or another.



*Young Guns Edward Noble, Zac McPherson and Jackson Howe, 1.5m apart at the height of the CVD-19 crisis.*

### Brad Goodridge

## Sydney League SL4 – Fifth Grade Report



*Glebe's Fighting 5ths won their first and last games of the season with a couple of draws and losses thrown in between.*

*Front row: Dylan Yates, Sam Crysos, Peter Rutledge*

*Back row: Akilan Thirumavalavan, Michael Monforte, Zach Jaensch, Scott Glading, Jacob Warnock (goalkeeper), Travis Dehnert, Tim Sutton, Dave Milburn, Richard McKeogh, Adrian McKeown*

The 5ths dropped from SL3 to SL4, which reflects the decision by Sydney Hockey to drop one of the Premier League competitions this year. The standard of hockey was high, and Glebe played competitively. At the end of the single round season, Glebe ranked 7th of 9 teams.


New players played this year include Akilan Thirumavalavan, Dave Milburn and Michael Monforte. All 3 played great hockey and settled in well to the culture of the club. Returning players included Scott Glading, Peter Busche and goalkeeper Jacob Warnock. Jacob ended up being players' player for the season. Top goal scorers were Travis Denhert (6) and Peter Rutledge (3).

Thanks go to the following players for backing up for the Fighting 5ths this year: Zane Goodridge, Zac MacPherson, Gareth Mealing, Eddy Noble and Nicky Vera.

Training was relatively well attended this year by the Fighting 5ths but waned towards the end of the season.

### Adrian McKeown

## Men's Games Played – 2020

 = Current Player

First Name	Last Name	Total Games
Les	WARK	816
Harry A	WARK	757
Stephen	CASEY	720
George	MANOU	714
Martin	HOWE	712
Colin	BROWN	660
Peter	BUSCH	656
Danny	OBRIEN	644
Harry J	WARK	643
Peter	HOWE	641
Victor	WESTACOTT	623
Vernon	HOWE	620
Colin	ROCHESTER	577
Adam	CAMPANO	562
Bill	STUBBS	561
Paul	ROGERS	557
Peter	MITCHELL	555
Robert	WARK	542
Andrew	GOODRICK	539
Gary	WARK	536
Michael	BOUGOUKAS	535
Alex	MCPHEE	503
Tim	SUTTON	496
Ken	WARK	492
Brad	GOODRIDGE	461
Pat	NILAN	454
Charlie	BROWN	426
Aaron	NILAN	426
Craig	MARTIN	409
Aaron	OMAN	387
John	MCDONALD	383
Patrick	WARK	382
Josh	LA SPINA	377
Anthony	WARK	361
Fred	LETTIS	350
Terry	KELLY	343
Adam	HOWARD	342
Mark	SHORT	341
Andrew	CHEONG	340
Graeme	GILMOUR	335
Robert	TAYLOR	324
Sam	BAGLEY	317
Jason	MCDONALD	311

## Men's Games Played – 2020 (cont'd)

Ian	PATERSON	310
Aleks	MANOU	302
Mark	PATERSON	302
Alister	CULLEN	300
John	CULLEN	299
Adrian	MCKEOWN	295
Matthew	WARK	286
Simon	WARK	286
Michael	WARK	285
Ross	BOUGOUKAS	277
Zachary	FARLOW	271
Paul	JOWETT	268
William	NOLLER	267
Dominic	TINTNER	257
Christopher	FARRUGIA	252
Jake	RIBAROVSKI	239
Sam	CHRYSOS	232
Dominic	KAVANAGH	231
Richard	MCKEOUGH	231
Paul	DIAPER	231
Geoff	PATERSON	229
Alex	SHEARD	219
Dylan	HOWE	211
Damien	GALLUZZO	192
Alasdair	BROWN	191
Pete	DODSLEY	185
Corey	MORROW	178
Victor	DUNAND	176
Mackenzie	NOLLER	159
Ivan	GORRIDGE	151
Edward	NOLLER	140
Jamie	TRAVIS	134
Scott	GLADING	130
James	MARTIN	115
Rodrigo	PEDRAZA-LUNA	106
Sam	ALEXANDER-PRIDEAUX	97
David	REID	90
Emmerson	WEILEY	85
Jackson	HOWE	78
Tim	PRITCHARD	76
Gareth	MEALING	76
Luke	POLLOCK	73
Ben	MARTIN	70
Jacob	WARNOCK	70

## Men's Games Played – 2020 (cont'd)

Travis	DENHERT	64
Matthew	WEST	61
Cameron	JONES	45
Suresh	RAJA	45
Joe	CLEAR	38
Peter	RUTLEDGE	38
Andrew	RICE	30
Nick	VERA	28
Dylan	YATES	27
Darren	FRENCH	26
Zac	JAENSCH	25
Daniel	VAN DER MERWE	25
Shane	MARTIN	24
Orlando	TRAVIS	18
Tyson	HICKEY	15
Zane	GOODRIDGE	12
Zac	McPHERSON	12
Edward	NOBLE	12
Aiden	CORBIN	11
Abdullah	BABAR	10
Aleem	BILAL	10
Riley	HARPER	9
Michael	MONFORTE	9
Ben	SMITH	9
Akilan	THIRUMAVALAVAN	9
David	MILBURN	7
Mehdi	RIZVIZ	6
Bruce	WRIGHT	6
Mitchell	BRAIN	3

## Women's Director

It has been a very successful year for our women's teams with four of the six placing in the top four in their respective competitions. Congratulations in particular to our mighty Third Grade, narrowly defeated in the grand final against Sydney University. Fourth and Sixth Grade both put up gallant efforts in their semi-final series and Sixth Grade ended second on its ladder which is a huge achievement (the SEHA competition elected not to have finals this season).

Better still was the happiness and diversity of our women players – from 13 to 58 years and the commitment was strong all season. We had record numbers at training, and we had a welcoming and encouraging environment. It was a season where the work was shared, and the morale was high. The fact that more than half of our women players ended the season and went straight back into their maroon uniforms to play summer comp is testament to their enthusiasm for, and commitment to, our club, the game and each other.

This season the women's committee took on some new and more members. We were better for it and I am so appreciative of the willingness of many to help out. Club captains Tess Van Bruin and Olivia Edwards made sure teams were on the field each week, had equal access to the turf at training and so much more; Lou Tapsell looked after all our umpiring requirements while nursing a new baby; Lucy Brennan was born for the role of registrar and did it with diligence and kindness; while Charlie Pepper was our right hand woman on the emails. Special mention goes to Megan Jenkins who has kept our administration running beautifully all year. Megan is never rattled, always helpful and managed to coach a team and be the highest goals scorer for the season across all our women's teams. Well done and thank you Megan.

Particular thanks to our wonderful coaches – Ross Bougoukas, Lynsey Askew, Megan Jenkins, Garnet Brownbill, Beth Parr and Julie Phillips for their extraordinary commitment to our players. Week in and week out these six were there at training and on sidelines - encouraging, supporting, inspiring. Sincere thank you lovely coaches – Glebe women would be lost without you.

Much gratitude to our crew of fine managers – Alisha Middleton, Kate Charge, Wendy Machin, Elissa Molloy, Maddie Dell and Rachael Beckett. The year brought an international pandemic and that added extra challenges, most of them falling on the shoulders of our managers. On top of their usual responsibility they added routines of sanitizing dug outs and change rooms, counting spectators and helping players follow a host of new rules. On behalf of the women's committee I want to thank our managers most sincerely for all they do to support our women to play the game they love.

While there was so much that was positive about this season it ended with the great sadness that descended upon our club with the sudden and tragic death of Madeline Dell. Maddie was a most loved Glebe player. Just days before her death she gave her all in the Fifth Grade final; playing with heart for the team she loved and managed. Our women were devastated and rallied to honour Maddie in a variety of ways – Third Grade and Sixth Grade played their final matches in black arm bands and held a minute's silence before taking the field and Fourth Grade donated a tree to Maddie's family. At this year's awards a new one will be added – the Maddie Dell Memorial Award. The first name on the trophy will be Maddie's. From here on it will be awarded to a player in our lower women's grades who gives of herself for others, encourages and supports, plays with courage and determination and inspires those around her. Just like Maddie – forever in our hearts.

Yours in pride for Glebe women coming together in a challenging year.

**Kate Alexander**

**Women's Director**

## Women's GDHC ML1 - 1<sup>st</sup> Grade Report



**Back row (left to right): Hilary Knowles, Laura Schmahmann, Kat Hughes, Maddy Scott, Izzy Shannon, Sarah Brine, Claire Callinan, Bronte Ryan, Olivia Cain**

**Front row (left to right): Lynsey Askew, Carolina Pereyra, Prudie Dallen, Ana Moraitakis, Eliza Brennan, Aisling Klimoski (GK) Missing: Alisha Middleton**

I would like to start off by thanking the Glebe District Hockey Club board for all the hard work and time they have spent in order to get us on the pitch this season. All your hard work behind the scenes is greatly appreciated and without all the extra hours this season would not have gone ahead.

After gaining promotion back to the top league in Sydney there was a lot of nerves and excitement throughout the playing group. After coming off a relatively successful season in ML2 confidence and our expectations were high. We welcomed in some new faces and welcomed back some familiar faces and got straight to work. Although the circumstances were challenging, I would like to credit this group of young women for not making any excuses and getting on with the task at hand.

From a results perspective this was a tough season however, a lot of valuable lessons were learnt, and I can say with confidence that the same mistakes were not repeated and the results towards the end of the season reflected that. Unfortunately, in a tight competition chances do not come easily and when we were not able to capitalise on them the quality of our opponents meant we were often made to pay.

Although the results did not go our way there are quite a few positives that came from this season. One of these was resilience shown for large portions of almost every game. I say almost every game as we did encounter a couple of blow out scores. Putting those aside I feel like we were able to absorb pressure and then provide a counter punch. The ability to keep turning up for your mate and never give up is a golden trait to have and is a great foundation to build from going forward.

Another positive was the mentality to go for the win and play positive. It would have been very easy throughout the season to be happy with a one or two goal difference against the top sides however, no matter the score and no matter how early or late in the match, the team always pushed for more. Content with just competing was not seen as acceptable in this group. Add this to the resilience shown and there is another step in the

right direction. Unfortunately playing in this way can leave you vulnerable and if you cannot capitalise on the pressure you create the quality of teams in this competition will make you pay.

If there is one thing to be improved for next season it would have to be circle craft. When we were able to create goal scoring chances too often, we were not able to apply the finishing touch. With some scoreboard pressure applied I feel like a few results would have been different. With some hard work during the pre-season I feel like we can address this area and by this time next season I hope to be writing about our much improved ability to finish off attacking chances.

I would like to finish by thanking the board for the opportunity to coach this wonderful group of women and thank the playing group for all the hard work and hours you have all put into the training sessions and matches. You are all highly talented and with age on your side there is no telling what you can achieve in the future. I look forward to seeing positive results next season and into the future.

**Ross Bougoukas**

## Women's 2<sup>nd</sup> Grade Report

If you were to look only at the results from second grade's season you would not get a full picture of the kind of outstanding hockey they played. Despite not winning a game, the team came away with three points in this shortened season. The results were very close throughout the season with minimal goal difference. The most frustrating thing (apart from the rain swamped pitch on round 4 at Cintra!) was that Glebe were so often the better team; the more constructive, creative and skillful team. There was just difficulty finding the back of the net!

The team was well led by the experienced Chantelle Hughes, in her first season as captain Chantelle really took on the role with great gusto and determination - similar to how she strikes the ball! Chantelle really helped motivate the playing group especially during half time talks and in situations where frustration could have got the better of the girls. Chantelle was supported by vice captain Bridget Kelly. Bridget took the extra responsibility in her stride, she is a great team player and works her backside off in the middle of the field. Thank you to Chantelle and Bridget for being such great leaders to a great bunch of women!

The first four rounds of the season were extremely close matches with only one goal in it and a nil all draw. This included the monsoon game against Ryde in which the game was cut short when Glebe were 1-0 down. I can honestly say in all of these games Glebe played better hockey than their opposition, and were very unlucky not to come away with at least one win. I would've liked to have seen us go down the right side of the field a little more often from the back and make a few more sensible decisions in the attacking 25, but the team did a great job in getting the ball up the field and putting pressure on the opposition. Our sturdy defenders Laura and Alanna in the middle were excellent at reading the play especially when the opposition were on the counter attack.

From around half way through the season, we decided we wanted to play more attacking hockey. Chantelle and Talia at right and left half, did much more overlapping and pushing up the field which created many more circle penetrations. This allowed our attacking inside mids, Emma Halliday, Emma AP and Amelie to make higher leads, Bridget to have less pressure and to show off her strength on the ball, and our strikers, Tessa, Ash, Hannah and Kate to outnumber the opposition's defense with their extremely high work rates (I'm not sure who ran the most kilometres this season out of Tessa and Emma Halliday... Possibly Tessa as she gives you an extra KM whenever you tell her she's being subbed in two minutes!) Unfortunately, with playing a more attacking brand of hockey it can mean that you become more susceptible to goals scored against you. Frustratingly for Glebe this saw slightly heavier losses in the next three rounds, mind you, only by two or three goals.

By the last two rounds, the mighty Glebe were on the up and got two points from the last two games. This included a draw in the last game against Strikers who finished as the league's minor premiers. This final game was probably the best hockey the team played. The girls played down the right hand side of the field more often, held onto the ball with control, made sensible decisions on and off the ball with excellent leads from the inside midfielders and strikers. If only the season didn't end there! Hats off to our returning goalkeeper Sarah who made an extraordinary save during this match, it's great to have you back Sarah!

Special mention also to Jess Higgs who I think played every position apart from goalie, there's always next year Jess! Jess's skills as well as her communication and encouragement on the field was, as always, absolutely fantastic.

Thank you to Kate Charge, our manager this season. It's not always easy playing and managing your team, Kate seemed to do it with ease. Always super organised and prepared even if she wasn't playing that round!

Thanks also to the great Kenny Wark for taking on Tuesday night training. I know the group learnt a lot from Kenny, such experience and a wealth of knowledge the players were able to tap into. Kenny also made training fun with many laughs, along with improving hockey skills.

Lastly, I'd like to thank our little pocket rocket kiwi mate Hannah Weir. This year we farewell Hannah as she moves back to NZ with Al and puppo Suki. Han, you add so much to the team as well as the whole club on and off the field and we're super sad to see you go. But good Luck back home, hopefully see you over there for Steinlager or two in the near future!

**Lynsey Askew**

## Women's 3<sup>rd</sup> Grade Report

Glebe 3 Women had a great season making it all the way to the Grand Final, where we were defeated in a hard fought game. The team has a wonderful combination of experienced women with amazing skills and experience and young women just embarking on their journey in women's hockey, an age range of 14-54!!!

The team embodies the club values of family, equality, commitment and contribution. We have mothers with young babies and kids, older players with incredible experience they shared with the team, young ones with speed and energy. What every player demonstrated was a gutsy approach, never giving up, supporting one another and playing as a team.

The team all brought their unique talents and perspectives to contributed to our successful season.

- Amy Whalley: Team Captain, putting her body on the line and winning best and fairest for the season
- Megan Jenkins: super coach and player, our top goal scorer
- Clare Prideaux: always giving good advice, demonstrating "dog determination" supporting the team and showing her class as a great hockey role model
- Abbie Sen: third in best and fairest, a great young player going from strength to strength (with the best smile!!)
- Asha Machin-Hunt: Vice Captain, always encouraging her team (and not saying sorry to the opposition too often this season!!) and using her impressive drag
- Kate Alexander: always there for her team, always running, always determined, she doesn't know how to give up
- Amy Shipp: with a dead eye and a sure trap, our second highest goal scorer
- Lou Tapsall: who has a baby only a few months before returning to the team, always a skilled and passionate player
- Kate Pearsall: another recent mum, strong, calm and tireless in the mid field
- Hannah Goodchild: a fantastic new Glebe woman, versatile, always calm under pressure, with perfect reading of the game
- Lauren McRae: always reliable, friendly and kind on and off the field
- Annie Millar: always running up the front and lightening the mood
- Liv Branson: with great positioning and hard work on the sideline
- Molly Busch: giving it her all to lead up the front and take a shot at goal
- Billy Pritchard: with her great skills and staggering reach – what a drag she has

Rachael - a great encourager of her team, who joined us for a number of games mid-season before sadly injuring herself and having to withdraw.

We were very lucky to have Jasmine Howe as our goalie for the first half of the season and then Claudia Otto and Alex Brien generously played for us as well as their own teams, proving their value as excellent goalies and club players.

It was a great season for the mighty Thirds, even with the restrictions and concerns around COVID – we can't wait for 2021!!

**Amy Whalley**

## Women's 4<sup>th</sup> Grade Report



**Left to Right:** Allegra Symonds, Steph Boyce, Deanne Barnes, Kerry Hunt (goalie), Carla O'Donnell, Bianca Osmond, Erin Machin Hunt, Lucy Brennan, Georgia Thompson, Bettina Grieve, Mary Kavanagh, Cate Heath, Charlie Pepper, Elissa Molloy (Mumager), Helen Przybylski, Innes Linton. **Coach:** Garnet Brownbill

Glebe Women's Fourth Grade 2020 season was another competitive one under the leadership of Captain Carla O'Donnell and Vice-Captain Deanne Barnes and was a successful year with 4th Grade making into the Semifinals. Always up for the challenge and eager to play, every member of the team was invaluable. With eight different goal scorers throughout the year, it was easy to see that every member of the team played a vital role and the cohesion within the group was clearly evident.

The team consisted of many of the previous years playing group and the introduction of some very skillful younger players, Cate Heath and Allegra Symonds. Also new to the team were our rock-solid defender Innes Linton and Steph Boyce who joined 4th Grade after the birth of her daughter, Kelsey, locking down the left side of the field with ease.

Every week it was a pleasure to see the smiles and laughs from the girls who come rain, hail or shine were keen to play. Speaking of rain, it seemed like the heavens were only too keen to provide with multiple games requiring the use of snorkel gear to play.

Nevertheless, 4th Grade adapted best to the conditions and took every challenge in their stride, something as their coach, was a pleasure to see and it showed the true grit and determination that each player strove for throughout the course of the year.

Throughout the regular season the team lost only three games and as such were never out of the top four, a major achievement that the team should be proud of. The development of every player's skills throughout the course of the year was indicative of the hard work and desire to improve that the team wanted and the efforts that the players presented at training every Tuesday night

This was a team that truly supported everyone associated with it. With bubs, Dads, dogs and everyone and anyone else willing to support, the dugout always had a number of attendees. This meant that babies were often placed in the arms of players running off the field so that Mums could get on and play. This was incredibly rewarding to see and as coach was a pleasure to be a part of.

To Mary Kavanagh, baby Levi and partner Nixon and Steph Boyce, baby Kelsey and partner Michael, what an amazing season you both had. The commitment to your teammates and to your young families was an achievement in itself and the fact that you were able to turn up, give it your all and play for your team, with only a couple of hours sleep, or none at all, is a feat to be recognised.

This is an amazing element that Glebe Women's Hockey represents and a massive thank you to the Women's Committee for their hard work, organisation and the positive, inclusive culture they have set in the women's club. In particular Kate Alexander, Megan Jenkins, Olivia Edwards, Lou Tapsell, Kate Pearsall and the 4th Grade players who assisted the Women's Committee Lucy Brennan, Erin Machin-Hunt and Charlie Pepper. Thanks again for the support that you all provided throughout the season.

Speaking of being supported, I was also incredibly lucky to have again in the dug out the wonderful skills and 'Mumager support' of Elissa Molloy. Admittedly, Elissa was the main voice that put my name into the mix for the role of coach in the first place but to have Elissa in my corner was a godsend. Never more the case given the Covid-19 requirements stipulated this season.

Every week bottles of sanitizer, hand wipes, sterilization sprays and an array of cleaning products would magically appear from within her green bucket and let's not forget the 'Covid healthy snacks' provided every week. As 'Mumager' Elissa ensured that everyone in the team, their child, their dog, aunt, uncle, long lost friend and thus anyone associated were facilitated and looked after. From myself and I'm sure everyone else in the team a massive hug to you and a huge thanks for all that you did throughout the season.

Also, throughout the season we had many milestones reached with numerous players reaching 50 games for the club. Bianca Osmond, Lucy Brennan and Charlie Pepper. This is again another remarkable achievement that shows the dedication to Glebe Women's Hockey Club, may there be many more games to follow.

Sadly, Kerry Hunt, who was no stranger to the Glebe community, has declared that she is hanging up the pads and has played her last game. Kerry had a great season in goals this year; one only has to look at the seven saved penalty corners in the first quarter of the preliminary final to see this. On behalf of the team Kerry thank you for your effort, commitment and dedication, no doubt we will see you cheering your daughters on from the sidelines.

Speaking of sidelines, Georgia Thompsons' realisation that you could run outside the field, with the ball still in play paid dividends. Georgia was a force to be reckoned with up front and ended the season as the team's highest goals scorer. Someone else who wasn't afraid of sidelines was Bettina Grieve. Happy to throw herself at anything and if you had already flown through the air, lost your stick, you can use your hands to try and keep the ball in play. Always a fierce competitor and a player with some serious dance floor moves or 'pregame warmups', bring on next season.

Looking forward to many future seasons is Allegra 'Legs' Symonds and Cate Heath. Allegra slotted into this team perfectly and her ability to run the ball created headaches for many opposition players. Talking headaches, the same can be said for Cate Heath and Helen Przybylski. Cate was always willing to defend opposition players, making sure they never got the ball and Helens ability to get behind the defensive line of opposition teams meant she was always on hand to tap in or deflect a goal past the goalie.

This being said though, the ball needs to be up your end of the field and this was admirably achieved through the efforts of our hardworking midfield. Lucy Brennan, Carla O'Donnell and Deanne Barnes keep the centre of the field like a forcefield, nothing got through.

Assisting them, Bianca 'Bee' Osmond, Jade Fox, Mary Kavanagh and Steph Boyce ensured that opposition teams had no way down either side of the field as well. All four women are incredibly hard-working players who quietly go about their business and these quiet achievers are a force to be reckoned with. Always running, supporting players at either end of the field and directing play out of our backline, the team's future is looking good if these girls can stay together.

Obviously, this leaves our defense. This year, with the loss of Mel Newtown, there was some concern that this was going to be our Achilles heel so to say. This couldn't have been further from the truth. With the arrival of Inness Linton to the club and the stalwarts of previous years, Erin Machin-Hunt and Charlie Pepper, 4th Grade was in safe hands. With only 11 goals being scored against up in the regular season, 5 of which came from the two teams above them, 4th Grade Women were a tough team to score against. All three players calmly went about their business and with the increased talk and communication that built during the season, the defense was an impenetrable wall that opposition attacks feared. Hopefully you're getting all the Wonder Woman, Super Hero references given.

Lastly, as coach, a massive thank you to the team. This year has been incredibly rewarding to say the least and I can't express my gratitude and thanks anymore. Hopefully every player felt as though this year, shortened as it was, provided you with the opportunities you wanted from it. From my point of view, to see improvements across the field and players trying things practiced at training, was a joy. No more perfect example of this was 4th Grades penalty corners which after the military style drills utilised at training, sorry girls, was an absolute pleasure to see it pay off in games. Hopefully this is something that the team can continue to undertake into the future and given the teams commitment into Summer competition I'm sure will pay further dividends.

Thanks again for the incredible season and remember, 5, 4, 3, 2, 1....

**Garnet Brownbill**

## Women's 5<sup>th</sup> Grade Report



**Back Row: Elena Hux, Olivia Edwards, Renu Jagadisan, Maddie Dell, Susan Kernot, Vicky McKenzie, Louisa Wilson, Alex Brien (GK)**  
**Front Row: Kirsten Taylor, Rosa Smith, Cindy Liles, Sian Morgan (C), Michelle Hancock, Amelia White, Beth Parr (Coach)**

As a coach and player, I'd like to dedicate this season to our long-serving fives manager and fierce half / fallback, Maddy Dell, who we will miss greatly.

After breaking my knee the morning of the first trial game of the 2020 season, my generous teammates accepted me to step in coach this season - I'd like to thank them for their patience and collaboration in enjoying a successful Glebe 5s season this year, particularly my support team of manager and captains: Liv, Sian, Maddy, Louisa and Scout. Thanks also go to Craig who supported us at training most weeks and Shorty for her support in sharing resources.

Building on the strong foundations of a team who have played together for several seasons, and balanced by new players Kirsten and Veronica, the fives started the season strong with a win against MosHarbour. with a goal each scored by Liv and Cindy. The next eight games were a mix of results, with goals scored by our halves, wings, centre forwards and inners Rosa, Scout, Renu, Mills, Liv and Cindy. Our defence, joined by fallback and Captain Sian Morgan, held strong in the short corners and worked hard with our halves to work the ball up to our forwards. They were led by our glorious goalie, Alex Brien, who defended some excellent goals and generously supported other Glebe teams after playing with us on Sundays.

By week 8 we found ourselves 4th in the table and facing a game against Strikers, who although were matching us for points were just one goal difference behind us. The final match of the season was to be a fight for a place in the semis. It's here that the team really showed their strength as played a close game against a skilful team, getting up at the crack of dawn to make our way to Pennant Hills. But with a coffee stop (for coach) the team were raring to go and keen to earn our place in the semis. It was a nail-biting game that saw some beautiful passes down the line between our halves, inners and wings, with a goal scored by Mills. Our defence worked hard to maintain our lead, it was clear Strikers were giving their all. Ultimately our hard work paid off and with a 1-1 draw Glebe 5s secured a place on the semi-finals!

Our final fight was against previous SEHA champs, Sutherland. Having conceded a 7-1 loss earlier in the season the team knew it was going to be a tough match, but everyone came with a winning attitude and were happy to enjoy an 'extra' match of the season. Glebe 5s came out strong and held Sutho off 1-1 in the first half, but after a challenging third and final quarter the match was won by Sutho, 4-1. The improvement in goal difference compared to our first game against Sutho is an illustration of how hard the team has worked all season, with full attendance at most training sessions, even on those wet Tuesday evenings in July!

Of course, Glebe 5s are as dedicated to our social calendar and cheese-heavy picnics as our training. Despite difficult circumstances of COVID restrictions we were still able to safely socialise and continue to build our team spirit off the pitch. Highlights include winning Trivia, post-match brunches and a Dine and Drag show!

**Beth Parr**

**Coach**

## Women's 6<sup>th</sup> Grade Report



**Back Row (standing):** Veronica Collins, Layla Francis, Claudia Otto, Amy Hughes, Olivia Kadir, Gabrielle Wilkinson, Eleanor Gibson, Rachel Beckett  
**Front Row (kneeling):** Roisin O'Higgins, Gemma McKenzie-Booth, Kate Day, Julie Phillips, Helen Gibson

What a season 2020 has been for Sixth Grade, from our first game and victory at Sutherland swimming pool through to a final 2-0 win placing us second on the ladder. Sixth grade women worked hard for this result, playing every game with teamwork, tenacity and persistence.

In a year full of uncertainty, sixth grade saw a drop in numbers from last year's bulging team, with the delayed start of the season, some of our 2019 players unable to return to hockey and others moving up to fifth grade. Luckily for us we had a strong core of returning players joined by stellar new players Roisin, Gabe, Kate and Layla who proved to be valuable additions to the team.

We were thrilled to have Julie back for a second season of coaching/playing with her handbag stuffed full of new drills and game plans. Her care and preparation can truly be seen in the way the team grew to become a competitive force in the SEHA competition with only two losses all season. Rachael returned as manager extraordinaire, keeping us organised and taking care to get to know every player. Most notably Rachael knew what was happening in every player's life and kept communications open while we were unable to train or play during the Covid lockdown. A special thank you to Julie and Rachel for all their hard work in managing the changed regulations so that we could all enjoy the game we love.

At the beginning of the season, the team quickly found cohesion, which was important with only ten games. After two games where a few of us were stepping on each other's toes, our positional play improved and we were talking more. The forward line was tenacious, quick to the ball and worked well as a unit, passing and backing each other up. Our defence was rock solid, with strong tackles and great clearances from the halves and backs and glorious saves by goalie Claudia. As the season progressed there was not much separating the six teams in the SEHA 4 competition and it became evident that Glebe had a chance to win any game. This was proven in our most memorable game where we beat the undefeated champions Easts 4 Red with a 2-1 win. Glebe were the only team to score against Easts Red all season. It is unfortunate that there were no finals for the SEHA 4 division this year, as I'm sure Glebe would have smashed it.

Whether we won, lost or drew, every game was enjoyable and there were always some laughs on and off the field. While the usual pub lunches and trivia nights couldn't happen this year, social distancing restrictions did not stop the team from bringing a sense of fun and camaraderie to every game.

The wonderful women of sixth grade are:

### **Rachael Beckett**

Rachael is a determined defender, who never lets a player get away from her. Her enthusiasm at training and on the field is contagious and she always gives it her all.

### **Kate Day**

As a key player in our strong midfield and defence this season no one would guess that Kate had returned to hockey after a 20-year break. With her great hockey brain and experience, she was a brilliant on-field support to less experienced and younger players.

### **Layla Francis**

In her first year of women's hockey, Layla's skills improved every week, culminating in some spectacular performances as a wing. Layla received the Coaches Award this year for her amazing pace of improvement over the season.

### **Eleanor Gibson**

Ellie is a natural full back. Her strong clearance hit broke many presses and we experimented with her receiving penalty corners – it was totally brilliant when she scored from these set pieces that we practiced so much at training.

### **Sophia Gibson**

Skilled midfielder with the ability to tackle and weave around the opposition. We missed Fi in the second half of the season and we hope she will return in 2021.

### **Helen Gibson**

The most improved player this season, Helen is fast, fit and always in the right position as wing.

### **Amy Hughes**

Our midfielder Amy always brings her A-game, with the skills and legs to get to the ball first and a persistence to follow tackle again and again. Sadly, her season was cut short by injury, but that didn't stop her coming along to cheer us on in our final game.

### **Olivia Kadir**

Always in the right spot when you needed her and happy to play in almost any position, Liv improved tremendously over the season, including some spectacular traps.

**Gemma Mckenzie-Booth**

Gemma stepped up to Captain this year and lead the girls with strength and inspiration – with a pumping playlist every week for warmup. Gemma is possibly the fittest player on the field and runs kms on the pitch as an inner or midfielder.

**Roisin O'Higgins**

New to Glebe this year, Roisin was a powerful asset to the team; skilled and always a positive voice on the field. As Centre Half, she was gutsy, tenacious and gave the team huge strength in the midfield. Roisin came a very close second in the Players Player votes for the year.

**Claudia Otto**

Our star goalkeeper and vice-captain, Claudia celebrated her 50th women's game for Glebe this year. Claudia also stepped up as GK for 3<sup>rd</sup> grade this year when they were short. We now have to watch out we don't lose her to higher grades in 2021!

**Julie Phillips**

Coach and fullback who made more on field cameos due to the smaller squad. Determined to achieve three things this summer – improved fitness, to master the overhead (never before seen at 6<sup>th</sup> grade level) and get Claudia off her L-plates.

**Gabrielle Wilkinson**

Our Players Player, Gabe is a powerful centre forward whose skills and drive for the ball can only be matched by her super friendly attitude. A force to be reckoned with who eats ribs and chocolate cake before games.

**Veronica Collins**

Kindly stepping in to help in the last three games, Veronica seamlessly slotted into the team as a wing on a mission to get those goals.

With so much happening in the world in 2020, it has been a delight to train and play with such a passionate and fun group of women. I think Gabe put it well when she said that hockey has been the silver lining of the year. Thank for all for a great season and I look forward to the great things to come.

**Julie Phillips**

## Women's Games Played

Full name	TOTAL CLUB games
Melissa Newton	450
Helen Howe	402
Amy Shipp	321
Louise Tapsell	318
Kylie Lawson	281
Rebecca Howe	280
Kate Gleeson	256
Josie Barron	248
Kate Pearsall	222
Angela Wark	222
Ellie Williams	209
Robyn Ainsworth	209
Mary Wark	204
Raelene Lindeberg	195
Sara Bala	194
Gabrielle Wark	176
Andrea Lum	175
Rachel Wilkinson	173
Lisa Williams	167
Terrie Iglesias	163
Alex Glading	160
Elizabeth Wark	158
Jessica Higgs	155
Prue Brady	154
Catherine Wark	151
Clare Stewart	148
Lara Pendle	147
Sarah Stephenson	147
Tessa Bruin	146
Michelle Hancock	143
Sian Morgan	142
Kaitlin Beare	140
Laura Schmahmann	139
Amy Whalley	138
Monica Bordignon	137
Erin McCleave	131
Sarah Moore	129
Alanna Howe	123
Julie Newton	118
Emma Brady	115
Madeline Dell	114
Pauline DeBattista	112
Alisha Middleton	109

Sue Brady	109
Nicki Osborne	105
Jasmine Howe	104
Lynsey Askew	103
Aisling Klimoski	96
Jo Symes	95
Erin Machin-Hunt	94
Litiana Field	94
Laura Martin	93
Olivia Edwards	93
Isabella Shannon	91
Elena Hux	90
Mary Kavanagh	89
Kate Ticehurst	88
Ana Moraitakis	86
Jena Prince	86
Olivia Cain	85
Madeleine Scott	83
Hannah Momot	83
Talia Morrow	79
Phoebe Kershaw	77
Nicole Larkin	77
Emma Alexander-Prideaux	76
Priya O'Brien	75
Hannah Weir	75
Sarah Brine	75
Sharon Westmeyers	73
Kate Alexander	71
Katie Inglis	71
Cecile Crobach	70
Saskia Andriessen-Kleijer	70
Asha Machin-Hunt	68
Elena Sheard	67
Ruth Stranding	67
Sophie Momot	66
Katrina Cochrane	65
Katherine Lade	63
Emma Kelly	62
Isabella Thomson	62
Jennifer Lam	62
Deanne Barnes	61
Jackie Andrews	61
Leonie Handcock	60

Full name	TOTAL CLUB games
Samantha Iglesias	59
Jessica Luc	58
Bianca Osmond	57
Anna Phillips	57
Rosa Smith	56
Lucy Brennan	55
Claudia Otto	55
Scout Hathaway-Wilson	54
Emilie Christie	54
Steff Ball	53
Teagan Howe	52
Gina Grant	52
Emma Clemmans	52
Charlie Pepper	51
Sara Eldridge	50
Renugah Jagadisan	49
Victoria McKenzie	49
Isabel Iglesias	49
Layla Riley	49
Sheridan Svetkoff	49
Kloe Mannering	49
Jade Fox	48
Eden Riley	48
Brooke Robson	48
Amy Stone	48
Megan Jenkins	47
Rachel Borm	47
Carla O'Donnell	46
Bridget Kelly	45
Amanda Rennie	45
Kobi Gibson	44
Amelie Roediger	43
Kirsten Taylor	42
Catherine Naylor	42
Susan Kernot	41
Phoebe Skyring	41
Alexandra Brien	40
Amy Molloy	40
Kate Gardner	39
Louisa Wilson	39
Emma Proudlock	39
Rochele Berwick	39
Jeanne Fourie	38
Eliza Brennan	38
Annie Millar	38

Tegan Holt	38
Leanne Molloy	38
Maddy Wonders	38
Emily Gillett	38
Taryn Robinson	37
Sophie Cooke	37
Cate Heath	36
Stephanie Goldsworthy	36
Victoria Sommella	36
Carissa Glynn	36
Natalie Tanner-Black	36
Chantelle Hughes	35
Gemma Mckenzie-Booth	35
Julie-ann Phillips	35
Cindy Liles	34
Bec Mcinnes	34
Sarah Sharples	34
Elizabeth Sheffe	34
Rachael Fillery	34
Rachael Beckett	33
Nina Van der Kley	33
Helen Przybylski	32
Miriam Pritchard	32
Katie Hartley	32
Shannan Craig	32
Jasmine Russell	32
Emma Neal	32
Billy Pritchard	31
Fiona O'dell	31
Aishling Farrell	30
Taylah Mannering	30
Rhiain Murphy	29
Jessica Wright	29
Remi Black	29
Fiona Russell	28
Clare Callinan	28
Prudence Dallen	28
Amelia White	28
Lauren MacRae	28
Jessica Phan	28
Rachael Brophy	28
Caroline Dixon	28
Alyson Ashe	28
Katherine Hughes	27
Kerry Hunt	27
Abbie Sen	27

Full name	TOTAL CLUB games
Beth Parr	26
Susan Kernot	26
Molly Busch	26
Eleanor Gibson	25
Billy Pritchard	25
Makenzi Harvey	25
Hannah Petroni	25
Jess Rue	25
Allegra Symonds	24
Stephanie Boyce	24
Helen Gibson	24
Olivia Kadir	24
Sophie Condon	24
Bronte Ryan	23
Sophia Gibson	23
Ashlee Ryan	23
Beverly Simmons	23
Alice Wright	23
Clare Prideaux	22
Caitlin Wasserman	22
Georgia Thompson	21
Stephanie Horst	21
Meredith Marks	21
Alexandra Epstein	21
Bettina Grieve	20
Nell Duly	20
Maria Nguyen	19
Julie-ann Phillips	19
Emily Gordon	19
Amy Hughes	18
Abbey Walker	18
Sharanya Maheshwaran	18
Bronwyn Pressland	18
Emma Smith	17
Madelyn Smith	17
Anna Kaskanlian	16
Lauren Peacock	16
Nadine Martin	16
Jesica Flores	16
Mary Prince	16
Emma Grant	16
Liz Mung	16
Myra Pritchett	16
Laure Salou	16
Johanna Craw	15

Colleen Downs	15
Emma Bills	15
Guusje Leichel	15
Carmen Lau	15
Roisin Sullivan	15
Lara Frolenchenko	15
Adrienne Campbell	15
Charlotte Burcher	14
Tania Savage	14
Jordan Brayshaw	14
Charlie Webb	14
Sophie Knott	14
Nicole Mensforth	14
Grace Naughton	13
Wendy Villarosa	13
Casey Gibbs	13
Mikaila O'Connor	13
Georgina Hunt	13
Zoe Pritchett	13
Philippa Spork	12
Ella Ferguson	12
Grace Dallen	12
Steph Anderson	12
Rachel Lambe	12
Sallina Jeffrey	12
Charlotte White	12
Hannah Goodchild	11
Heather Curd	11
Georgia Byriell	11
Aimee Muschamp	11
Mary-Anne Naylor	11
Stacey Kramer	10
Alex Kinneally	10
Innes Linton	10
Kate Day	10
Layla Francis	10
Roisin O'Higgins	10
Rhiannon Russell	10
Daphne VanderOord	10
Becky Weldrake	10
Emma Halliday	9
Olivia Branson	9
Veronica Collins	9
Nichola Halford	9
Danielle Spencer	9
Mckenzie Carr	8

Full name	TOTAL CLUB games
Hilary Knowles	8
Kate Charge	8
Gabrielle Wilkinson	8
Kristenn Wong	8
Destiny Peris	8
Emma Verner	8
Flick Woolley	8
Susie Douglas	7
Katie Cheswick	7
Laura Bulley	7
Emily Bowe	7
Rachel Haynes	5
Natalie White	5
Catalina Lucero	5
Holly Whittaker	5
Carolina Pereyra	4
Josefina Noguerol	4
Amy Cottee	4
Laura Atkins	3
Indigo Ryan	3
Jamie Hartley	2
Sinead Simpkins	1

## Club Honours 2020 - Men

### Player's Player

First Grade Players' Player 2020:	Mark Paterson
Second Grade Players' Player 2020:	David Reid
Third Grade Players' Player 2020:	Andrew Cheong
Fourth Grade Players' Player 2020:	Paul Diaper
Fifth Grade Players' Player 2020:	Jacob Warnock

### Club Games

#### 400 Club Games

Craig Martin

#### 300 Club Games

Alex Manou

Mark Paterson

#### 200 Club Games

Dylan Howe

#### 100 Club Games

Rodrigo Pedraza-Luna

### Highest Goal scorer

Geoff Paterson Trophy for the Highest Goalscorer 2020: Aaron Nilan

## Club Honours 2020 - Women

### Player's Player

First Grade Players' Player 2020:	Aisling Klimsoki
Second Grade Players' Player 2020:	Alannah Howe
Third Grade Players' Player 2020:	Amy Whalley
Fourth Grade Players' Player 2020:	Innes Linton
Fifth Grade Players' Player 2020:	Alex Brien
Sixth Grade Players' Player 2020:	Gabrielle Wilkinson

### Coaches Award

First Grade Most Consistent Player 2020:	Sarah Brine
Second Grade Most Consistent Player 2020:	Emma Halliday
Third Grade Most Consistent Player 2020:	Amy Whalley
Fourth Grade Most Consistent Player 2020:	Mary Kavanagh
Fifth Grade Most Consistent Player 2020:	Renu Jagadisan
Sixth Grade Most Consistent Player 2020:	Layla Francis

### Club Games

#### 150 Club Games

Jessica Higgs

#### 100 Club Games

Jasmine Howe

Lynsey Askew

### Highest Goal scorer

Linda Tait Trophy for the Highest Goalscorer 2020: Megan Jenkins

## Club Trophies

### W. J. Taylor Cup

The trophy was first awarded in 1941. It was donated by W.J. Taylor, who at the time was the Club Patron. The award was originally for the **Most Improved Player**, however, since 1954 the wording was altered to **The Club Member Who Has Set The Best Example by Consistent Play and General Demeanour**.

1941	Frank Murray	1984	Terry Reece
1942	Not awarded	1985	Bob Barrett
1943	Jack Taylor	1986	Colin Rochester
1944	Not awarded	1987	Tim Sutton
1945	Leo Murdoch	1988	Bevan Ineson
1946	Alan Cross	1989	R. "Ted" Edmondson
1947	Bob Needham	1990	Tom Jenkins
1948	Jack Buckley	1991	Bevan Ineson
1949	Fred Needham	1992	Harry Wark
1950	Jack Martin	1993	Stephen Casey
1951	Vince Halls	1994	Michael Bougoukas
1952	Jack Martin	1995	Martin Howe
1953	Glen Elliott	1996	Brent Gilmour
1954	Alex Robb	1997	Amrat Parbhu
1955	Vernon Turner	1998	Amrat Parbhu
1956	Jack Taylor	1999	Kieran Diviney
1957	Reg Matthews	2000	John McDonald
1958	Paul Rogers	2001	Mick Bougoukas
1959	Greg Harris	2002	Phil Winwood
1960	Greg Harris	2003	Steven Casey
1961	Graeme Gilmour	2004	Graham Brown
1962	Ken Wark	2005	Tom Holyoake
1963	Pat Nilan	2006	Tom Holyoake
1964	Pat Nilan	2007	Craig Bagley
1965	Graeme Gilmour	2008	Alan Doughty
1966	Dave Stevens	2009	John Cullen
1967	Ken Wark	2010	Chris Farrugia
1968	Martin Howe	2011	Jack Stocker
1969	Robert Brown	2012	Paul Diaper
1970	Keith Vincent	2013	Owen Bailey
1971	Graeme Gilmour	2014	Luke Rogers
1972	Vic Westacott	2015	Chris Farrugia
1973	Col Smith	2016	David Reid
1974	Pat Nilan	2017	Aaron Nilan
1975	Ian Mutton	2018	Aleks Manou
1976	Greg Corben	2019	Corey Morrow
1977	Greg Corben	<b>2020</b>	<b>David Reid</b>
1978	Royce Jenkins		
1979	Mike Buckley		
1980	Geoff Paterson		
1981	John "Todd" Smith		
1982	Les Wark		
1983	Danny O'Brien		

## A. J. Oldfield Cup

The A. J Oldfield Cup was also first awarded in 1941. The Cup was presented to the Club by the late A. J. (Burt) Oldfield, the former Australian Wicketkeeper. The trophy is awarded to the **Colt Under 21 player who has been adjudged The Most Improved and Best Behaved During the Season.**

1941	Jack Taylor	1982	Ken Wark Jnr
1942	Not awarded	1983	Craig Stubbs
1943	during the	1984	Ken Bennett
1944	war years	1985	David Rochester
1945	John Richards	1986	Michael Diviney
1946	John Collett	1987	Julian Dell
1947	Not awarded	1988	Wayne Southwell
1948	Don Campbell	1989	David Annan
1949	Allan Halls	1990	Shane Nilan
1950	Bob Rodgers	1991	Stuart Corkery
1951	Ken Bolin	1992	Glen Barnes
1952	Len Needham	1993	Patrick McCann
1953	Ken Bolin	1994	Brad Goodridge
1954	Paul Rogers	1995	Alan Alderson
1955	Paul Rogers	1996	Christian Campano
1956	Greg Harris	1997	Sam Everist
1957	Vic Westacott	1998	Steve Sherwood
1958	Pat Nilan	1999	Yuri Schimke
1959	Pat Nilan	2000	Aaron Oman
1960	Bill Stubbs	2001	Aaron Nilan
1961	Pat Nilan	2002	Adam Howard
1962	Robert Brown	2003	Michael Wark
1963	Graham Kirkland	2004	Brendan Booth
1964	Ross Croker	2005	Ian Paterson
1965	Marvin Heaston	2006	Michael Wark
1966	Garry Manou	2007	Ian Paterson
1967	Harry Wark Jnr	2008	Ian Paterson
1968	Graham Lisk	2009	Scott Cleary
1969	Graham Lisk	2010	Aleks Manou
1970	Royce Jenkins	2011	Ross Bougoukas
1971	John McDonald	2012	Ross Bougoukas
1972	Wayne Sullivan	2013	Dominic Tintner
1973	Les Wark	2014	Dominic Tintner
1974	Greg Corben	2015	Toby Ferguson
1975	Geoff Paterson	2016	Sam Alexander- Prideaux
1976	Robert Diviney	2017	Sam Alexander- Prideaux
1977	Robert Diviney	2018	Rodrigo Pedraza-Luna
1978	Ken Wark Jnr	2019	Tim Pritchard
1979	Ken Wark Jnr	<b>2020</b>	<b>Nicky Vera</b>
1980	Ken Wark Jnr		
1981	Danny O'Brien		

## V. J. Turner Cup

In their efforts to foster Junior Hockey in the Club, the Management Committee of 1950, decided to present a trophy for the **Most Improved Junior Under the Age of 17 Years**. The Cup was named after Vern Turner in appreciation for his work for Juniors. Vern was an outstanding player and an equally outstanding Coach. He first started with the Club in 1942, playing Left Wing and soon went into First. Grade. He played 261 games and scored 84 goals. His ambition was to coach a winning Under 16's team. This ambition was unfulfilled when he left the Club in 1957. In the following 1958 Season, two teams which he had coached played out the Final.

1950	Keith Riley	1986	James Fitzgerald
1951	Bennett Dunn	1987	Damien Galluzzo
1952	Maurie Cownie	1988	Brett Stubbs
1953	Eddy Kenny	1989	Damien Galluzzo
1954	Bill Stubbs	1990	Aaron Nilan
1955	John Whittle	1991	Aaron Nilan
1956	Gary Sullivan	1992	Adam Campano
1957	Barry Angus	1993	Adam Campano
1958	Brian Howe	1994	Christian Campano
1959	Graeme Gilmour	1995	Aaron Oman
1960	Dennis Lisk	1996	Wayne Benfield
1961	Harry Wark jnr	1997	Alex Crook
1962	Dennis Brown	1998	Pat Casey
1963	Colin Brown	1999	Pat Wark
1964	Not Awarded	2000	Adam Howard
1965	Not Awarded	2001	Mark Paterson
1966	Graham Lisk	2002	Matt Wark
1967	John McMahan	2003	Zach Farlow
1968	Wayne Sullivan	2004	Luke Freeman
1969	Michael Weatherly	2005	Alistair Cullen
1970	Wayne Sullivan	2006	Teren Manou
1971	Les Wark	2007	Josh LaSpina
1972	Robert Diviney	2008	Ross Bougoukas
1973	Robert Diviney	2009	Jake Ribarovski
1974	Robert Diviney	2010	Dominic Tintner
1975	Tony Cowan	2011	Tim De Weerd
1976	Brian Bissakker	2012	Dylan Howe
1977	Allen Chu	2013	Max Tintner
1978	Scott Brown	2014	Mack Noller
1979	Peter Cremin	2015	Sam Alexander- Prideaux
1980	Leo Kalisperos	2016	Bill Eustace
1981	Leo Kalisperos	2017	Tim Pritchard
1982	Kieran Dell	2018	Riley Nilan
1983	Craig Schubert	2019	Cameron Jones
1984	Julian Dell	2020	<b>Orlando Travis</b>
1985	Shane Filewood		

## J. W. Kenny Trophy

This Trophy was first competed for in 1975. It was donated by Jim Kenny, Patron, Life Member and Foundation Member of the Club. The Committee along with Jim decided to award the trophy to the **most outstanding First Grader each season**. It was further decided that the Committee would take into consideration points allocated in the SHA Brian Booth Medal Award. However, since 1980, in making the award, the winner was not necessarily the highest points scorer from the Club in the Brian Booth Medal list.

1976	Ian Mutton	1998	Shane Nilan
1977	Robert Diviney	1999	Aaron Nilan
1978	Geoff Paterson	2000	Steve Sherwood
1979	Greg Corben	2001	Aaron Nilan
1980	Graham Bell	2002	James Wright
1981	Garry Manou	2003	Aaron Oman
1982	Warren Birmingham	2004	Dean Benfield
1983	Ken Wark Jnr	2005	Darryn Booth
1984	Col Rochester	2006	Dean Benfield
1985	Les Wark	2007	Mark Paterson
1986	Robert Wark	2008	Dean Benfield
1987	Danny O' Brien	2009	Alister Cullen
1988	Peter Busch	2010	Alister Cullen
1989	Danny O'Brien	2011	Aleks Manou
1990	George Manou	2012	Anthony Charge
1991	Ken Wark Jnr	2013	BJ Bruton
1992	Craig Stubbs	2014	Aleks Manou
1993	Ken Wark Jnr	2015	Ian Paterson
1994	Ken Wark Jnr	2016	William Noller
1995	Shane Nilan	2017	Aleks Manou
1996	Pat McCann	2018	Josh La Spina
1997	Shane Nilan	2019	Mark Paterson
		<b>2020</b>	<b>Ben Smith</b>

## Michael 'Abbo' Atterton Memorial Trophy

Michael Atterton died tragically in early 1978; the Club awarded this Trophy in fond memory of him. In 1965, at the age of 6, 'Abbo' commenced his hockey with the Club. Whilst still a Junior, at the age of 14, he played his first senior games. He was considered to be, potentially, one of the most outstanding prospects in the Club. The Trophy was first awarded in 1978, for the **Player With the Most Potential**.

1980	Danny O'Brien
1981	Warren Birmingham
1982	Leo Kalisperos
1983	David Rochester
1984	Craig Martin
1985	Michael Diviney
1986	James Fitzgerald
1987	James Fitzgerald
1988	David Annan
1989	Craig Greaves
1990	Craig Greaves
1991	Craig Greaves
1992	Aaron Nilan
1993	Aaron Nilan
1994	Simon Booth
1995	Dean Benfield
1996	Dean Benfield
1997	Aaron Oman
1998	Aaron Oman
1999	Darryn Booth
2000	Darryn Booth
2001	Darryn Booth
2002	Mark Paterson
2003	Mark Paterson
2004	Ian Paterson
2005	Matthew Wark
2006	Alister Cullen
2007	Alister Cullen
2008	Matthew Wark
2009	Alex Sheard
2010	B J Bruton
2011	B J Bruton
2012	Andrew Palmer
2013	B J Bruton
2014	Alasdair Brown
2015	B J Bruton
2016	Tim Pritchard
2017	Riley Nilan
2018	Tim Pritchard
2019	Sam Alexander-Prideaux
<b>2020</b>	<b>Ben Martin</b>

## Robert Diviney Memorial Trophy

This Trophy was donated by the Bank of NSW and given to the Club in memory of Robert Diviney who died tragically at age 23 in April, 1982. He was hit by a car on his way home from hockey training at Jubilee Oval. Robert was an outstanding player whose enormous potential was recognised from an early age with his selection in the NSW Colts at age 16. A player in the legendary mould of his uncle, Pat Nilan, Robert was fast, agile and had excellent elimination skills making him an 'elusive' opponent. (1977 Annual Report). The trophy is awarded to the **Most Outstanding Club Player, Junior or Senior**.

1982 Warren Birmingham  
1983 Ken Wark Junior  
1984 Craig Stubbs  
1985 Grant Martin  
1986 David Rochester  
1987 Ken Wark Jnr  
1988 Ken Wark Jnr  
1989 Ken Wark Jnr  
1990 Craig Greaves  
1991 Ken Wark Jnr  
1992 Ken Wark Jnr  
1993 Craig Stubbs  
1994 Warren Birmingham  
1995 Warren Birmingham  
1997 Ken Wark Junior  
1998 Steve Sherwood  
1999 Aaron Nilan  
2000 James Wright  
2001 Aaron Nilan  
2002 Darryn Booth  
2003 Darryn Booth  
2004 Shane Nilan  
2005 Dean Benfield  
2006 Mark Paterson  
2007 Aaron Oman  
2008 Mark Paterson  
2009 Matthew Wark  
2010 Matthew Wark  
2011 Ian Paterson  
2012 B J Bruton  
2013 Mark Paterson  
2014 Mark Paterson  
2015 Mark Paterson  
2016 Mark Paterson  
2017 Andy Leat  
2018 B.J. Bruton  
2019 B.J. Bruton  
**2020 Aaron Nilan**

## Pat Nilan Trophy

Pat Nilan, ex Triple Olympian, donated this Trophy to the Club. It is to be presented to the **Most Outstanding Club Member, Junior or Senior**, for the year as adjudged by the Management Committee.

- 1984 Graeme Gilmore
- 1985 Keith Paterson
- 1986 Keith Paterson
- 1987 Martin Howe
- 1988 Gary Wark
- 1989 Eric 'Chook' Frazer
- 1990 Col Rochester
- 1991 Harry Wark Jnr
- 1992 Jim Oman
- 1993 Maureen Paterson
- 1994 Les Wark
- 1995 Maureen Paterson
- 1996 Anne Wark
- 1997 Margaret Howe
- 1998 Jim Oman
- 1999 *The Artificial Turf Committee:* Harry Wark Jnr (Convenor), Eddy Crook, Rodney Hammett, Jim Oman, Marilynne Smith, Robert Taylor, David Trodden, Harry Wark Snr, Les Wark
- 2000 Glenn Dunn
- 2001 Bob Taylor
- 2002 Michael Bougoukas
- 2003 Harry Wark
- 2004 Ron Cheong
- 2005 John Nilan
- 2006 Geoff Paterson
- 2007 Raelene Lindeberg
- 2008 Mark Noller
- 2009 Vernon Howe
- 2010 Andrew Goodrick
- 2011 Helen Benfield & Danny O'Brien
- 2012 Matthew Wark
- 2013 Adam Campano
- 2017 *The Junior Committee:* Clare Prideaux' Allison Cummins' Sue Heath' Aaron Nilan' Lindesay Brine' Lester Currie' Kerry Hunt, Margot Rawsthorne, David Pritchard, Vernon Howe, Laura Torrible, Rowena McPherson, Paul Riley, Andrew Goodrick
- 2018 Aaron Nilan
- 2019 Ross Bougoukas
- 2020 Katrina Cochrane**

## Harry Wark Snr Trophy

This trophy is dedicated to the memory of Harry Wark Snr, Club Patron, Life Member who played a record 754 games for the Club, including First Grade and the lower grades. Harry was a passionate and committed member of the Club who supported the development of younger players and the enjoyment of the game amongst the lower grade players. This trophy is awarded to a **member in the lower division who participated with the same loyalty, enthusiasm and dedication to the true traditions of the Club.**

- 2003 Geoff Hammett
- 2004 Vernon Howe
- 2005 Andrew Goodrick
- 2006 Graham Brown
- 2007 Tim Sutton
- 2008 Milcho Klimoski
- 2009 Bernard Adcock
- 2010 Adrian McKeown
- 2011 Jason McDonald
- 2012 George Manou
- 2013 Erin Schlicht
- 2014 Adrian McKeown
- 2015 Adam Campano
- 2016 Edward Noller
- 2017 Craig Martin
- 2108 Gareth Mealing
- 2019 Adrian McKeown
- 2020 Brad Goodridge**

## Carole Wark Trophy – Most Outstanding Umpire

Carole Wark began umpiring in 1981 when she joined the Club. Since that time she has achieved a number of notable milestones. She gained an Australian A badge in 1991 and she was awarded the NSW WHA umpire of the year in 1993. She assisted in the development of umpires at every level. This trophy is awarded annually to the **umpire who always strives to improve their own knowledge and skills, tries to give their best performance each time they take the field, and who demonstrates a commitment to developing and encouraging other umpires.**

1996	Tiffany Brown
1997	Christine McNicol
1998	Tiffany Brown
1999	Christine McNicol
2000	Tiffany Brown
2001	Tiffany Brown
2002	Anita Martel
2003	Lisa Usher
2004	Melissa Newton
2005	Not Presented
2006	Michelle Hancock
2007	Caroline Lake
2008	Caroline Lake
2009	Caroline Lake
2010	Helen Benfield
2011	Martin Bishop
2012	Martin Bishop
2013	Mark Short
2014	Martin Bishop
2015	Martin Bishop
2016	Ellie Sheard
2017	Lindesay Brine
2018	Colleen Downs
2019	Lindesay Brine
<b>2020</b>	<b>Lou Tapsell</b>

## Molly Wark Trophy

The Trophy was donated by Molly Wark. Molly was instrumental in initiating the formation of the Glebe Women's Hockey Club in 1978 where she was President for over ten years. She was actively involved in all aspects of the Club, both men and women, until her death in 2017. The Trophy is awarded annually to the **Clubwoman who has contributed most to the Club both on and off the field and/or in administrative affairs.**

- 1985 Jackie McNichol
- 1986 Anne Rochester
- 1987 Carol Purdy
- 1988 Lisa Williams
- 1989 Jill Strachan
- 1990 Elaine Trodden
- 1991 Jane Goldsmith
- 1992 Carole Wark
- 1993 Margaret Howe
- 1994 Michelle Minett
- 1995 Anne Rochester
- 1996 Carole Wark
- 1997 Margaret Howe
- 1998 Margaret Howe
- 1999 Natalie White
- 2000 Margaret Howe
- 2001 Natalie White
- 2002 Moira Williams
- 2003 Lisa Usher
- 2004 Moira Williams
- 2005 Moira Williams
- 2006 Helen Howe
- 2007 Louise Tapsell
- 2008 Helen Howe
- 2009 Helen Howe
- 2010 Helen Benfield
- 2011 Louise Tapsell and Angela Phillips
- 2012 Louise Tapsell
- 2013 Louise Tapsell
- 2014 Amy Lovegrove
- 2015 Melissa Newton
- 2016 Angela Wark
- 2017 Laura Schmahmann
- 2018 Laura Schmahmann
- 2019 Laura Schmahmann
- 2020 Kate Alexander**

## Margaret Howe Encouragement Award

Margaret Howe played for the Club and supported her family in their Club involvement and held many positions on the Women's Committee including being manager for First Grade for several years. She was arguably our most outstanding Women's Club Captain watching every player most weekends so she could be fair with selections. An enthusiastic champion of women's hockey at all levels, she also took very seriously her responsibilities as a caring advocate for the players of all grades. Hardworking and generous with her time, she was an exceptional organiser, dedicated supporter, and was committed to engendering Club spirit. This trophy is awarded annually in her memory to **encourage the continued involvement of a younger club member who has consistently provided the best example of Club spirit in their contribution to the club, on and/or off the field.**

- 2005 Alison Cheong & Amy Smith
- 2006 Nikki Watters & Elizabeth Wark
- 2007 Catherine Wark
- 2008 Alison Cheong
- 2009 Melissa Newton
- 2010 Sara Bala
- 2011 Aisling Klimoski
- 2012 Anna Phillips
- 2013 Katie Inglis
- 2014 Prue Brady
- 2015 Ellie Sheard
- 2016 Phoebe Kershaw
- 2017 Cecile Crobach
- 2018 Ana Moraitakis
- 2019 Ana Moraitakis
- 2020 Charlie Pepper**

## Natalie White Trophy – Most Outstanding Junior

An outstanding NSW player and U21 coach herself, Natalie has contributed enormously to the development of the Club's women players coaching the First Grade team in our first foray into the SWHL ML1 competition. Natalie exposed players of all abilities to top level coaching. She established a youth development squad aimed at fostering junior talent in the Club for both girls and boys and always showed a commitment to raising the standard of hockey. She served the Club as coach, umpire and administrator and continues to support as a selector and mentor. This trophy recognises Natalie's contribution to the Club especially in encouraging junior players to play to the best of their ability. It is awarded annually to the **Junior player (under 18 years of age) who has displayed the most potential throughout the year.**

- 2005 Catherine Wark
- 2006 Catherine Wark
- 2007 Elizabeth Wark
- 2008 Phoebe Kershaw
- 2009 Ellora Thwaite
- 2010 Ellora Thwaite
- 2011 Natasha De Weerd
- 2012 Litiana Field
- 2013 Litiana Field
- 2014 Litiana Field
- 2015 Alanna Howe
- 2016 Litiana Field
- 2017 Litiana Field
- 2018 Olivia Cain
- 2019 Olivia Cain
- 2020 Prudie Dallen**

## Ann Rochester Trophy

Ann Rochester, a member of the Diviney and Nilan families, began playing with the Club in 1982. Ann played 265 games for the Club and served in almost every committee role including the first Women's Convenor in the Club's Management Committee. Her contribution to the Club both on and off the field was marked by generosity, fairness and a hardworking, straightforward approach to any job that needed to be done. When she took something on she took it on with 100% commitment and high expectations. She inspired others around her to make the same effort in their hockey, their participation in the life of the Club and in life itself. This trophy is awarded to the **Club's most outstanding female player.**

- 2009 Josie Barron
- 2010 Angela Phillips
- 2011 Lynsey Askew
- 2012 Lynsey Askew
- 2013 Rebecca Howe
- 2014 Stefanie Ball
- 2015 Alisha Middleton
- 2016 Lynsey Askew
- 2017 Alisha Middleton
- 2018 Cecile Crobach
- 2019 Lynsey Askew
- 2020 Aisling Klimsoki**

## Maddy Dell Trophy

The Maddy Dell trophy will be awarded each year to a **woman player in the lower divisions who possesses the qualities that were so admired in Maddy. A player who works tirelessly for the club and her teammates; who is a great sportswoman who brings kindness, fairness and integrity to everything she does.** Maddy is remembered as a remarkable young woman with a deep commitment to social justice and equality. She always said yes to giving back and did so with a warm, gentle and inclusive style. Maddy played hard for her beloved fifth grade team and always gave her all. She worked behind the scenes for others with great modesty. The Maddy Dell trophy recognises Maddy's contribution. It has been donated by the Alexander Prideaux family.

### 2020 Madeline Dell

## Presentation Photos



Katrina 'Shorty' Cochrane receiving the Pat Nilan Trophy from Aaron Nilan.



Aaron Nilan, winner of the Robert Diviney Memorial Trophy.



Mark Paterson, celebrating 300 club games.



Ben Martin, winner of the Michael 'Abbo' Atterton Memorial Trophy, receiving the trophy from his father and Club President, Craig Martin.



Mark Paterson, 1st Grade Player's Player, receiving the award from Club President, Craig Martin.



Vernon Howe celebrating his son Dylan's 200 club games, receiving the award from Club President, Craig Martin.



Mark Paterson and Aaron Nilan.



Paul Diaper, 4th Grade Player's Player.

## Roll of Honour - Men

Year	President	Honorary Secretary	Honorary Treasurer	Club Captain
1933	Edward Mockler	George Mockler	John William Taylor	-
1934	Edward Mockler	George Mockler	John William Taylor	-
1935	Edward Mockler	John William Taylor	Robert Henry Dunn	-
1936	Edward Mockler	John William Taylor	John Logan Quinlan	-
1937	Edward Mockler	John William Taylor	John Logan Quinlan	-
1938	Charlie Humphries	John William Taylor	John Logan Quinlan	-
1939	Charlie Humphries	Clarrie Eling	John Logan Quinlan	-
1940	Charlie Humphries	Jack Worley	John Logan Quinlan	-
1941	Charlie Humphries	Jack Worley	John Logan Quinlan	-
1942	Charlie Humphries	John William Taylor	Leslie Waight	-
1943	Charlie Humphries	William Ryan	John William Taylor	-
1944	Charlie Humphries	William Ryan	John William Taylor	-
1945	Charlie Humphries	William Ryan	John William Taylor	-
1946	Jack Worley	John William Taylor	Harry Butler	-
1947	Jack Worley	Max Steedman	Harry Butler	-

Year	President	Honorary Secretary	Honorary Treasurer	Club Captain
1948	Jack Worley	Paul Rodgers	Harry Butler	William Ryan
1949	Jack Worley	Paul Rodgers	Fred Needham	William Ryan
1950	Jack Worley	Fred Needham	Noel Walker	Frank Murray
1951	Jack Worley	Fred Needham	Noel Walker	Frank Murray
1952	Jack Worley	Fred Needham	Noel Walker	Frank Murray
1953	Jack Worley	Fred Needham	Noel Walker	Frank Murray
1954	Jack Worley	William Francis Ryan	Noel Walker	Harry A Wark
1955	Jack Worley	Ray Thorpe	Alick Robb	Harry A Wark
1956	Jack Worley	Ray Thorpe	Harry Butler	Harry A Wark
1957	Jack Worley	Ray Thorpe	Jack McParland	Harry A Wark
1958	Noel Walker	Ray Thorpe	George Collett	Greg Harris
1959	Noel Walker	Ray Thorpe	Greg Harris	Victor Westacott
1960	Noel Walker	Ray Thorpe	Bill Stubbs	Victor Westacott
1961	Noel Walker	Ray Thorpe	Bill Stubbs	Harry A Wark
1962	Kelvin Dickey	Ray Thorpe	J Thomson/W Stubbs	Pat Nilan
1963	Kelvin Dickey	Ray Thorpe/Fred Letts	Arthur Stubbs	Pat Nilan
1964	Kelvin Dickey	Fred Letts	Brian Howe	Pat Nilan
1965	Kelvin Dickey	Frank Vanderputt	Brian Howe	Pat Nilan
1966	Greg Harris	Frank Vanderputt	Fred Letts	Pat Nilan
1967	Bill Stubbs	Fred Letts	Frank Whiteman	Robert Brown
1968	Bill Stubbs	Fred Letts	Lindsay Weate	Robert Brown
1969	Bill Stubbs	Fred Letts	Ken Wark	Robert Brown
1970	Bill Stubbs	Fred Letts	Ken Wark	Robert Brown
1971	Bill Stubbs	Fred Letts	Frank Whiteman	Pat Nilan
1972	Pat Nilan	Fred Letts	Frank Whiteman	Martin Howe
1973	Pat Nilan	Fred Letts	Keith Kipp	Robert Brown
1974	Pat Nilan	Fred Letts	Keith Kipp	Robert Brown
1975	Pat Nilan	Fred Letts	Keith Kipp	Robert Brown
1976	Pat Nilan	Fred Letts	Ken Wark	Ian Mutton
1977	Pat Nilan	Fred Letts	Ken Wark	Robert Brown
1978	Robert Brown	Gary Manou	Keith Kipp	Ian Mutton
1979	Fred Letts	Bruce Pink	Con Savva	Ian Mutton
1980	Fred Letts	Bruce Pink	Greg Corben	Ian Mutton
1981	Graeme Gilmore	Bruce Pink	Robert Wark	Les Wark
1982	Graeme Gilmore	Danny O'Brien	Robert Wark	Les Wark
1983	Graeme Gilmour	Danny O'Brien	Keith Kipp	Les Wark
1984	Graeme Gilmour	Keith Paterson	Neville Gullickson	Kevin Sweeney
1985	Peter Howe	Keith Paterson	Neville Gullickson/Ian Treharne	Danny O'Brien

Year	President	Honorary Secretary	Honorary Treasurer	Club Captain
1986	Danny O'Brien	Keith Paterson	Peter Howe	Colin Rochester
1987	Robert Wark	Ian Treharne	Peter Howe	Kevin Sweeney
1988	Robert Wark	Danny O'Brien	Peter Howe	Peter Busch
1989	Robert Wark	Gary Wark	Ian Treharne	Peter Busch
1990	Robert Wark	Danny O'Brien	Ian Treharne	Peter Busch
1991	Robert Wark	Danny O'Brien	Ian Treharne	David Rochester
1992	Geoff Paterson	Keith Corkery	Bob Taylor	Peter Busch
1993	Geoff Paterson	Keith Corkery	Bob Taylor	Peter Busch
1994	Geoff Paterson	Keith Corkery	Bob Taylor	Peter Busch
1995	Geoff Paterson	Keith Corkery/Les Wark	Glenn Dunn	Craig Stubbs

Year	President	Honorary Secretary	Honorary Treasurer	Club Captain
1996	Geoff Paterson	Les Wark	Bob Taylor	Kevin Chivers/ Amrat Parbhu
1997	Geoff Paterson	Les Wark	Bob Taylor	Kevin Chivers/ Amrat Parbhu
1998	Bob Taylor	Eddie Crook	Glenn Dunn	Kevin Chivers/ Amrat Parbhu
1999	Bob Taylor	Eddie Crook	Glenn Dunn	Shane Nilan/ Amrat Parbhu
2000	Bob Taylor	Eddie Crook	Glenn Dunn	Danny O'Brien/ Amrat Parbhu
2001	Bob Taylor	Eddie Crook	L Howard	Danny O'Brien/ Amrat Parbhu
2002	Bob Taylor	Les Wark	Mike Newton	James Wright/ Mick Bougoukas
2003	Bob Taylor	Les Wark	Mike Newton	Aaron Oman/ Mick Bougoukas
2004	Bob Taylor	Les Wark	Mike Newton	Aaron Oman/ Mick Bougoukas
2005	Bob Taylor	Les Wark	Mike Newton	Aaron Oman/ Graeme Brown
2006	Bob Taylor	Les Wark	Mike Newton	Danny O'Brien/ Graeme Brown
2007	Bob Taylor	Les Wark	Tim Sutton	Danny O'Brien/ Graeme Brown
2008	Bob Taylor	Les Wark	Tim Sutton	Danny O'Brien/ <i>Not Filled</i>
2009	Bob Taylor	Danny O'Brien	Tim Sutton	Adam Campano/ <i>Not Filled</i>
2010	Bob Taylor	Danny O'Brien	Tim Sutton	Adam Campano/ Adrian McKeown
2011	Bob Taylor	Danny O'Brien	Tim Sutton	Adam Campano/ Adrian McKeown
2012	Bob Taylor	Danny O'Brien	Tim Sutton	Adam Campano/ Adrian McKeown
2013	Danny O'Brien	Mark Paterson	Tim Sutton	Adam Campano/ Adrian McKeown
2014	Danny O'Brien	Mark Paterson	Tim Sutton	Ian Paterson/ Adrian McKeown
2015	Danny O'Brien	Mark Paterson	Josh La Spina	Ian Paterson/ Adrian McKeown
2016	Danny O'Brien	Mark Paterson	Josh La Spina	<i>Not Filled/ Not Filled</i>
2017	Les Wark	Mark Paterson	Josh La Spina	Alister Cullen/ Adrian McKeown

## Roll of Honour - Women

### Year President Honorary Secretary Honorary Treasurer Club Captain

1934 Jack Dwyer Denis Donovan  
1935 Jack Dwyer Denis Donovan

1978 Molly Wark Molly Wark Jan Hammond -  
1979 Molly Wark Molly Wark Jan Hammond -  
1980 Molly Wark Molly Wark Jan Hammond -  
1981 Molly Wark Molly Wark Jan Hammond -  
1982 Molly Wark Molly Wark Jan Hammond -  
1983 Molly Wark Molly Wark Jan Hammond -  
1984 Molly Wark Molly Wark Jan Hammond -  
1985 Molly Wark Molly Wark Jan Hammond -  
1986 Molly Wark Judy Dean Jan Hammond -

### Year President Honorary Secretary Honorary Treasurer Club Captain

1987 Molly Wark Judy Dean Jan Hammond Ann Rochester  
1988 Molly Wark Jill Strachan Jan Hammond Lisa Williams  
1989 Janice Farquharson Jill Strachan Pauline Sunderland Jenny Evans  
1990 Janice Farquharson Roberta Inns Pauline Sunderland Elaine Trodden

### Year Convenor Women's Secretary Women's Treasurer Club Captain

1991 Ann Rochester Linda Glassock Jeanette Brazel Jane Goldsmith  
1992 Elaine Trodden Jane Goldsmith Ann Rochester Michelle Opitz  
1993 Ann Rochester Jane Goldsmith Fiona McVicar Michelle Minett  
1994 Ann Rochester Jane Goldsmith Elaine Trodden Michelle Minett  
1995 Ann Rochester Cathy Busch Ann Rochester Michelle Minett  
1996 Carole Wark Ann Rochester Christine McNicol Margaret Howe  
1997 Carole Wark Carmen Byrne Christine McNicol Margaret Howe  
1998 Carmen Byrne Mary Wark Neale Lawson Margaret Howe  
1999 Carmen Byrne Mary Wark Neale Lawson Margaret Howe  
2000 Carmen Byrne Mary Wark Neale Lawson Margaret Howe  
2001 Carmen Byrne Mary Wark Neale Lawson Lisa Usher  
2002 Mary Wark Rachael Wilkinson Neale Lawson Lisa Usher  
2003 Moira Williams Gabrielle Wark Neale Lawson Rachael Wilkinson  
2004 Moira Williams Gabrielle Wark *Vacant* Helen Howe  
2005 Moira Williams Gabrielle Wark Ellie Williams Helen Howe  
2006 Amy Wark Gabrielle Wark Kylie Lawson Helen Howe  
2007 Amy Wark Helen Howe Kate Pearsall Raelene Lindenberg  
2008 Mary Wark Helen Howe Kate Pearsall Raelene Lindenberg  
2009 Helen Howe Kate Gleeson Kate Pearsall Raelene Lindenberg  
2010 Helen Howe Kate Gleeson Kate Pearsall Angela Phillips  
2011 Helen Howe Louise Tapsell Alex Glading Angela Phillips  
2012 Louise Tapsell Leonie Smallwood Alex Glading Angela Phillips  
2013 Louise Tapsell Louise Tapsell Alex Glading Angela Wark  
2014 Louise Tapsell Louise Tapsell Prue Brady Angela Wark  
2015 Melissa Newton Emma Brady Prue Brady Angela Wark  
2016 Melissa Newton Carole Wark (Feb - June) Prue Brady Angela Wark  
2017 Kate Alexander Laura Schmahmann *None appointed* Lynsey Askew

## Roll of Honour - Board

At the AGM at the end of the 2017 season and after a year of consultation, the members of the GDHC voted to accept a new Constitution which altered the Club's structure from a Management Committee to a Board format. This change brought the GDHC into line organisationally with most other hockey bodies in

the country and positioned the Club for its future. Those charged with the responsibility of administering the Club continue to do so with the same commitment and passion as those on whose shoulders they stand: a champion club, a club of champions.

<b>Year</b>	<b>Portfolio</b>	<b>Directors</b>	<b>Club Captains</b>
2018	President Finance Development Juniors Women Men Administration	Les Wark Joshua La Spina Clare Prideaux Sue Heath Kate Alexander George Manou Carole Wark	Alister Cullen Adrian McKeown Cecile Crobach
2019	President Finance Development Juniors Women Men Administration	Les Wark Joshua La Spina Clare Prideaux Sue Heath Kate Alexander George Manou Carole Wark	Ross Bougoukas Adrian McKeown Kat Hughes Olivia Edwards
2020	President Finance Development Juniors Women Men Administration Sponsorship	Craig Martin Joshua La Spina Katrina Cochrane Sue Heath Kate Alexander Adrian McKeown Graham Jones Aaron Oman	Ross Bougoukas

## Obituaries

### Vale...rest in peace

Over the period of time since the 2018 Annual Report the following members and supporters have passed away. We recognise and give thanks for their contribution and commitment to the Club.

#### Madeline Dell

Maddy turned 30 this year. Glebe hockey has been a part of her story since she was tiny, with her father, Kieran, and her uncle, Julian, playing juniors and seniors for the club. Maddy also played for Glebe juniors and more recently she was a much loved member of our Fifth Grade team. Maddy was the longest playing member of this close knit team – she played the last five seasons straight, almost never missed a game or training and was deeply committed. Maddy's team mates are devastated. She will be dearly missed. Team mates describe Maddy as a fearless left half with a gutsy tackle; who was super supportive; giving; ever reliable and dedicated. Beth Parr, Fifth Grade coach said "Maddy was so kind and she only ever had good things to say about the club and her team".

Three years ago Fifth Grade needed a manager and Maddy just said yes. That was her style. She quickly became a favourite of the women's committee – always helpful and positive behind the scenes; always first to return match cards and team reports. Just last Sunday Maddy was there with her team battling against Sutherland in the semi-final. She played her heart out. The next day when the women's committee needed to check a quick fact about the game it was Maddy we asked. She replied quickly and commented on how proud she was of her team.

Outside of hockey Maddy was quietly making her mark. At the end of last year she graduated with a Bachelor of Social Work (First Class Honours). Her team mates describe that she was so very proud to work in her first social work position at Liverpool Hospital and was fiercely passionate about social justice and equality. I have no doubt that the gentle, kind, warm style that Maddy brought to hockey would have left its mark in so many ways on the patients and families she worked with.

Maddy's team mates are connecting and supporting each other to honour their special mate. They have commented that they wish they had told Maddy more often how much they appreciated what she did for the team and our club. My sense of Maddy, a modest young woman, is that she didn't seek accolades or fuss. Yet like Fifth Grade, I dearly hope she knew our deep gratitude for all she did, all she was and all she gave. Maddy came to training in bright leggings and she was so full of life. Glebe Women's will not be the same without her.

With our deepest sympathies to Maddy's parents, family and friends. We send our prayers and love and gratitude for a beautiful soul who touched so many.