

# **Glebe District Hockey Club Incorporated**

*A Club of champions, a champion Club*

---



*91<sup>st</sup> Year*

---

## **2021 Annual Report**

*We acknowledge the Traditional Owners and Custodians of the land where we live, work and play. We pay our respects to Elders past, present and emerging. We celebrate the stories, culture and traditions of Aboriginal and Torres Strait Islander Elders of all communities who also live, work and play on this land.*

## Contents

<b>Life Members</b>	<b>4</b>
<b>GDHC Board of Directors – 2021</b>	<b>5</b>
<b>A Brief history of GDHC</b>	<b>6</b>
<b>President’s Report</b>	<b>7</b>
<b>Glebe District Hockey Club, 2021 Achievements</b>	<b>9</b>
<b>2021 Clubhouse Refresh Project</b>	<b>10</b>
<b>2021 Turf Annual Report</b>	<b>13</b>
<b>Turf Coordinator</b>	<b>14</b>
<b>2021 Celebrating 90 years of GDHC</b>	<b>15</b>
Balance Sheet – as at 31 October 2021 .....	18
Profit and Loss – for the year ended 31 October 2021 .....	19
<b>Auditor’s Report</b>	<b>20</b>
<b>2022 Planning and Strategy Refresh</b>	<b>22</b>
<b>2022 Strategy on a Page</b>	<b>24</b>
<b>Our Values</b>	<b>25</b>
<b>Kate Alexander, Thank You</b>	<b>26</b>
<b>Administration Report</b>	<b>27</b>
<b>Communications Report</b>	<b>28</b>
<b>Junior Report</b>	<b>30</b>
<b>Development Report</b>	<b>33</b>
<b>Women’s Report</b>	<b>38</b>
Women’s 1st Grade Report.....	40
Women’s 2nd Grade Report.....	42
Women’s 3rd Grade Report.....	43
Women’s 4th Grade Report.....	45
Women’s 5th Grade Report.....	48
Women’s 6th Grade Report.....	51
Women’s Games Played.....	53
<b>Men’s Report</b>	<b>60</b>
Premier League PL1 – First Grade Report.....	62
PL1 Season Manager’s Report for 2021 .....	64
Premier League PL2 – Second Grade Report .....	68
Premier League PL3 – Third Grade Report.....	70
Sydney League SL3 – Fourth Grade Report.....	73

Sydney League SL4 – Fifth Grade Report .....	77
<b>Men’s Games Played – 2021</b>	<b>79</b>
<b>Club Trophies</b>	<b>82</b>
<b>Club Honours 2021 – Women’s</b>	<b>83</b>
Player’s Player.....	83
Club Games.....	83
Highest Goal Scorer .....	83
<b>Club Honours 2021 – Men’s</b>	<b>84</b>
Player’s Player.....	84
Club Games.....	84
Highest Goal Scorer .....	84
<b>Roll of Honour – Women</b>	<b>85</b>
<b>Roll of Honour – Men</b>	<b>87</b>
<b>Roll of Honour – Board</b>	<b>90</b>
<b>GDHC Premiership Wins</b>	<b>91</b>
<b>90th Anniversary Dinner Speeches</b>	<b>94</b>
Harry Wark – Our History.....	94
Carole Wark – Our Values .....	98
Rachael Beckett – Our Future.....	102
<b>Obituaries</b>	<b>104</b>

***We endeavour to ensure that information in this Annual Report is accurate. If you notice any errors or omissions we will do our utmost to correct it. And if we have missed anything that you think should be included, please let us know so we can consider for future reports.***

## Life Members

1947 Mrs Ester Taylor \*  
1947 Jack Quinlin \*  
1952 Jim Kenny \*  
1956 Bill Ryan \*  
1958 Jack Worley \*  
1964 Harry Wark Snr \*  
1967 Kelvin Dickey \*  
1969 Ken Wark Snr \*  
1971 Patrick Nilan  
1973 Bill Stubbs  
1975 Fred Letts  
1975 Graeme Gilmour \*  
1975 Robert 'Charlie' Brown  
1977 Paul Rogers  
1981 John Diviney \*  
1986 Molly Wark \*  
1989 Colin Brown  
1989 Keith Paterson \*  
1992 Martin Howe \*  
1996 Robert 'Bob' Taylor  
1997 Harry Wark Jnr  
1997 Geoffrey Paterson  
1998 Les Wark  
2000 Margaret Howe \*  
2000 Robert Wark  
2008 Danny O'Brien  
2010 John Nilan  
2012 George Manou  
2013 Vernon Howe  
2017 Peter Busch  
2017 Andrew Goodrick  
2018 Helen Howe  
2018 Adam Campano  
2019 Ken Wark Jnr

\* Deceased

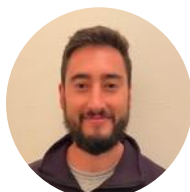
## GDHC Board of Directors – 2021



**President**  
Sue Heath



**Men's**  
Adrian McKeown



**Finance**  
Joshua La Spina



**Women's**  
Kate Alexander



**Development**  
Katrina Cochrane



**Administration**  
Kat Hughes



**Juniors**  
Tara Taylor



**Communications**  
Rosa Smith

**Public Officer**  
Joshua La Spina

**Honorary Auditor**  
Stephen W. Van

## A Brief history of GDHC



### 1930s GDHC began

- 1931 Brother Macartan Keegan creates a hockey team at Saint James Patrician Brother's School Forest Lodge (Glebe).
- 1933 First season played under GDHC banner.
- 1937 Brother Macartan Keegan transferred back to India.

### 1940s-50s GDHC's golden years

- 1947-1954 7 first grade premierships (SHA record).
- 1948 First Junior team fielded (Under 16s).
- 1949 Vernon Joseph Turner expands the junior teams from 1 to 6



### 1970s GDHC women join

- 1978 First women's teams entered into North Shore Hockey Association Competition.

### 1990s GDHC united

- 1990 Women and men's teams united under GDHC umbrella.
- 1991 Three women's team played in Eastern Districts Competition.



### 2020s A club committed

- 2021 Minkey squad of 35 players, 10 junior teams, 6 women's teams, 5 men's teams fielded for 2021 season
- Celebration of 90 years of GDHC.

## President's Report

Dear Life Members, Members, Players and Families,

The history books for 2021, similar to 2020, will again reflect a tumultuous year in our lives. 2021 offered a glimpse into all emotional states don't you think? For me, fear, frustration, and a big dose of gratitude were high on the list. So, I sincerely hope that you and your families navigated the period as best you could.

As I personally reflect on 2021, and in particular on the opportunity to lead our great Club, I wish to extend my thanks to you. This is my first year as Club President and you have warmly welcomed me into your traditions and history. Thank you for bringing to life much loved stories from the past and for helping me understand how the actions of so many good people over many, many years meant that this year, we could celebrate our 90<sup>th</sup> anniversary. Thank you for helping me understand that our rich history should inform our future, not define it.

The impact to our season was unavoidable and disappointing to say the least. I am very certain that if the mid-year cancellation had not occurred, this report would be talking about a season that included grand final wins and top 4 finishes across our Club. The energy was intensely positive on and off the field and if premierships were won on that alone, who knows what the end result could have been.

The mid-year hiatus of play propelled the Board forward into 2022 planning, culminating in the refresh of our GDHC strategy. You can read more about the process we followed in this Annual Report that landed our purpose, our presence, our priorities and reaffirmed our values. The results are meaningful, and the priorities identified achievable. However, as with any good strategy, success will come from how we execute against it. To that end, support from our members will be critical. There are many ways in which you can be involved, whether that be a light touch approach or a more significant contribution.

Our Club is blessed with good people. I've known that for many years. We are also blessed to have access to a broad range of skills and experience through our members. Skills that when shared can have a very positive impact on our future. I hope when the opportunity arises, you will share yours.

The Clubhouse refresh project was finally completed on 1 December and at the conclusion of the 2021 Annual General Meeting, the Clubhouse will be handed back to its members. There has been a significant amount of work completed over the past 6 months, under difficult COVID conditions. This made the work harder to share around, resulting in most of the heavy lifting left to a small number of people. I would like to acknowledge the countless hours of scraping, painting and day to day advice and direction provided by our very own Jamie Travis. Jamie has been by my side throughout the project, offering support and labour to ensure we achieved the brief. Alongside Jamie, our Men's Director Adrian McKeown must

also be acknowledged. Adrian often took the in between shifts, even whilst he was on annual leave. On behalf of our Club and our current and future members who will benefit from your hard work, thank you. You can read more about this important project in this Annual Report.

I talk about our Club values often, how these values when put into action have a demonstrable impact on our members. On us as individuals. To that end, I would like to extend my sincere gratitude to all of our coaches, managers, captains, committee members and umpire coordinators. You have all executed these important roles with great care and passion, proving that 'giving back' makes such a difference to people's lives including your own, I hope. Thank you for your **contribution** to our Club.

I also extend my thanks to our incredible GDHC players, all 322 of you, for representing us with much pride and respect. Thank you for regularly demonstrating such **commitment** to your game and to your team.

To our new families, and families that have simply lost count of how many years you've stayed connected, no sideline cheer would be as loud if not for your support. No Junior would get to training or game day without you, not to mention the NSW road trips (we got a few in) to attend state champs and other rep games. Our GDHC **family** is a tight community that I believe, is a significant differentiator when compared to other Clubs. Thank you.

To our hard working, dedicated Board of Directors. Each of you lead important portfolios, always with our players and members in mind. The time you dedicate is generous and your energy levels admirable. Thank you for your diverse thinking and strong desire to promote **equality** across all aspects of our great Club.

After many successful years as Women's Director, Kate Alexander will finally take a step back. Kate has been an outstanding and generous contributor to our Club and her genuine care and strong desire to 'do good' has had incredible results for our Women players and our Club in general. Thank you, Kate. We have recognised Kate's long tenure as Women's Director further in this Annual Report.

At the conclusion of 2021, we will also farewell Kat Hughes our Administration Director and first grade Women's player. Kat and her wife Nikki will shortly leave Sydney and prepare for the birth of their baby. Kat has been an incredible support to me and our Club, ensuring we are always safe and sound. Thank you, Kat.

My final thank you is to our members for entrusting me in this important role. I wish you all a very happy festive season and hope the year ahead offers kindness and good health to you. Take care.

**Sue Heath**

Club President

## Glebe District Hockey Club, 2021 Achievements

Despite our 2021 season being cut short, the Board, supported by a subset of members continued to work hard. They remained focussed on key areas of opportunity. Opportunities that will have a demonstrable impact on our Club today, and our Club of the future. These achievements align to our three priority areas:

1. Improve
2. Retain
3. Grow

The Board and their support network of members are to be congratulated for their passion and positive attitude. Their collective desire to make a difference is deeply appreciated.

If you would like to be more involved in driving our Club forward in 2022, have particular skills or ideas, please contact your Board member or Sue Heath directly.

### 2021 Achievements



#### IMPROVE

##### Address challenges

- ✓ Introduced new GDHC Communications Director role
- ✓ Completed the Clubhouse Refresh Project
- ✓ Completed phase 1 of the GDHC Website Refresh Project
- ✓ Uplifted social media channels with improved engagement and imagery



#### RETAIN

##### Deliver a superior Club experience

- ✓ Delivered a successful 90<sup>th</sup> Anniversary event, raising \$30,000 for the Clubhouse Refresh project
- ✓ Delivered six online Junior Academy sessions
- ✓ Launched our Club first, Mental Health Awareness round
- ✓ Secured 12-month Tenancy Grant from City of Sydney Council, representing 100% of Clubhouse rental cost
- ✓ Launched online fitness sessions whilst in lockdown



#### GROW

##### A sustainable future

- ✓ Delivered a 'New to Hockey' program for Juniors
- ✓ Produced new marketing banners aimed at Juniors
- ✓ Successfully lobbied City of Sydney Council for local all-purpose turf access (52m x 61m surface)
- ✓ Defined GDHC 2022 priorities aligned to delivering to our Club purpose
- ✓ Redefined GDHC Head Coach role with specific priorities for season 2022

## 2021 Clubhouse Refresh Project

It is my absolute pleasure to **officially hand back to our members, our place of gathering, our GDHC Clubhouse, under the arches at Jubilee Oval.**

When I committed to driving our Clubhouse refresh project earlier this year, I did not expect another lockdown experience, and a significant one at that. In fact, I anticipated a timeline of 2-3 months and an army of members to help bring the Clubhouse back to life. Alas, it was not to be.

**Our design philosophy** was to embrace our location and the nature of the space. Being within an historic railway arch, we thought it was important to emphasise the beauty of this space, and also to reinforce the proximity to the historic Tramshed precinct. Hence, we have used a palette of natural finishes leaning to an industrial feel.

Additionally, it was important to deliver a Clubhouse that would appeal to the whole Club, all of our players and their families, and offer modern aspects to meet our needs.

**Our 90<sup>th</sup> Anniversary celebration and key fundraiser event** in June was a great night. We set ourselves a target of raising \$30,000, and through the generosity of an anonymous donation of \$15,000 and an additional \$15,000 raised through our members, our Clubhouse refresh project became fully funded and very real.

**And so, we began.** Our intention was to focus our initial energy on the arch, reinstating the symmetry back into the space. It is our best feature. With the support of our highly skilled 'in-house' builder Corey Morrow and 'in-house' electrician Ed Noller, we stripped out the old storeroom and existing kitchen. We cleared the rubbish and swiftly moved onto scraping.

Scraping back years of paint (an industrial blasting approach was financially prohibitive) and bring the natural brick back to life was our aspiration. One that failed primarily because of the labour involved. It was a difficult decision to change tact, but after weeks of energy zapping scraping, it was clear that if we were to deliver the Clubhouse back to our members in 2021, painting the arch was the only answer.

**Fast forward 6 months..... Our Clubhouse refresh project is complete. Our future gatherings will now take place in a safe, modern space that connects us with our history and traditions.**

The GDHC Clubhouse was simply a tired room that over time had lost its identity. What we have delivered back to our members, we hope, will appeal to all. We have:

- ✓ Given the space a fresh paint

- ✓ Installed new modern cabinetry that will be sufficient for our needs, including a movable island bench with additional storage capacity
- ✓ Installed a new kitchen with updated plumbing, dishwasher, coffee machine and a workable fridge
- ✓ Installed new lighting
- ✓ Enabled WI-FI capability to support cashless POS and Audio-Visual needs
- ✓ Celebrated our GDHC Australian Champions by way of a painted mural
- ✓ Catered for our Minkey children, ensuring they have new sticks they can easily access on Saturday mornings

**Thank you.** On behalf of our members, I would like to sincerely thank the following amazing and wonderful people who played an integral part in this labour of love project.

- **Jodi Foster.** Interior Designer and Mum to our Juniors, Frankie and Clark Foster. Jodie, you have been so generous with your time and energy, introducing us to expert cabinet makers and tradies. Thank you. [fosterandassociates.com.au](http://fosterandassociates.com.au)
- **Jamie Travis.** Foreman and labourer. Fourth grade Men's player and Dad to Juniors, Orlando and Ayisha. Jamie, your focus to detail and genuine care in delivering the finished product has been outstanding. Thank you.
- **Adrian McKeown.** Labourer. Fifth grade Men's player and Men's Director. Ado, your belief in our project had you on site weekday evenings, weekends, including additional time when you were on leave. Thank you.
- **Veronica Collins.** Project Manager and Mum to Juniors, Lauren and Cooper. Veronica, your focus and 'give me your best offer or I'm walking' approach, ensured we kept our costs to a minimum. Thank you.
- **Cate Heath.** Mural and other artistic bits, Glebe Junior and Women's player. Cate, your creative vision and demonstration of teamwork was brilliant. Thank you.
- **Orlando Travis.** Mural and other artistic bits, Glebe Junior and Men's player. Orlando, you jumped at the chance to be involved in our project, bringing to life important elements of the finished product. A celebration of our history. Thank you
- **Corey Morrow.** Builder and first grade Men's player. Corey, you were the first person to get involved in our project, always driven towards the end game. A place for you and your mates to gather. Thank you.
- **Ed Noller.** Electrician and second grade Men's player. Ed, your constant saying of 'I'm just around the corner' or 'just give them my number', provided such comfort and reassurance. Thank you.

Thank you also to Kevin Heath, Peter Busch, Tim Pritchard, Billy Pritchard, Mark Naylor, Sarah Brine, Will Brine, Rachael Beckett, Keren Tamir, Dylan Howe, Andrew Goodrick, Clark Foster, Ian Foster, Jim Heaney, Ellen Kennedy, Jessica Kennedy, Sam Alexander-Prideaux and all members that donated to the Arthur Stubbs Foundation for 2021.

## Some of our generous volunteers hard at work



Billy Pritchard



Adrian McKeown.



Will Brine



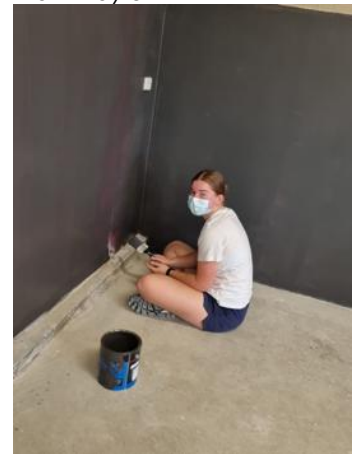
Mark Naylor



Tim Pritchard



Rachael Beckett and Sam Alexander-Prideaux



Sarah Brine

**Sue Heath**  
Club President

## 2021 Turf Annual Report

### The Crescent Synthetic Sports Field

At Long Last...



On Monday 18 October 2021, at the meeting of the City of Sydney Council they voted unanimously to approve the building of The Crescent Synthetic Sports Field. This approval was the culmination of three years of hard work by the Club. In 2019, the Club approached the City of Sydney Council, with an idea. With their help the idea was refined and put into a fully-fledged proposal. The Council then assisted the Club in navigating through all the different, and sometimes difficult, stages to achieve this final approval.

I would like to thank the City of Sydney Council officers, especially Joel Johnson and his team, for their support in this project and councillors Kerry Phelps and Linda Scott for their guidance, assistance and being staunch supporters of this proposal. If we didn't have the support of the Council Officers and these two councillors our vision of what could be done would still be an idea.

Since 1984, the Club has been in a continual struggle to find a place within the inner west where we could build a synthetic surface. The Club has had to compromise on its full field dreams but now we have ended up with a 52 x 61 meter surface which is nearly a  $\frac{3}{4}$  field. It will allow two full dimension circles to be

integrated into the surface at either end. The surface is now big enough to be utilised by the whole of the Club for team and individual skills training and a summer competition. It will allow the Club membership to again use the facilities of the Clubhouse to enhance the social and family aspect of the Club.

The Club is at present in discussions with Council to try and have the field construction complete by the start of the 2023 season. We will soon be coordinating a discussion group of senior coaches and players to compile a wish list of items and designs to discuss with Council in the final design stages of the field.

### **Rozelle Park Land**

This area has been a big disappointment for the Club. It promised so much but at present it has not lived up to those expectations. Who knows what will happen in the future designs but at this stage no area for a hockey field is expected to be included into the final design.

On behalf of the Club, I would like to thank Mary Wark for all the incredible amount of work and time she put into each of the proposals that were submitted to Council, WestConnex and Government. Her expertise in this area showed these government bodies that a hockey field was very feasible within the parkland. However due to politics, who would have guessed, the government design was very underwhelming for all community sports within the Inner West. My sincere personal thanks go to Clare Prideaux for all of her behind the scenes work and to David Thompson and HNSW for the support providing information for the Club's submissions.

### **St Peters Interchange Site**

This site was mentioned as a potential site for a hockey field however due to the very high levels of contamination on the site both the City of Sydney and the Inner West Councils have refused to take over any part of the site until the NSW Government cleans up all the contamination. At present there is no timeframe for the contamination to be removed, so again we wait.

Les Wark

**Turf Coordinator**

## 2021 Celebrating 90 years of GDHC

This year marked ninety years since the Glebe District Hockey Club was founded. We were so incredibly fortunate to be able to celebrate our 90-year anniversary in early June, just a few weeks before Sydney went into another lock-down, putting an end to the 2021 hockey season and social gatherings.

The event celebrated the Club's history, present and future. The Club has a rich history, beginning in 1931, when Irish born Brother Michael Keegan arrived at Saint James' Patrician Brothers School Forest Lodge (Glebe) and established a hockey team. It wasn't until 1933 that the Club officially became the Glebe District Hockey Club and played its first season.

Over the years, the Club expanded, fielding its first Junior team in 1948, and first Women's team in 1978. Today, we are a strong Club of 35 Minkeys, 10 Junior teams, 6 Women's teams and 5 Men's teams with players from beginner to elite.

The Club has also had its fair share of Olympians, Australian representatives, and state players over the years. Perhaps more importantly, is that the Club has had hundreds of people over the years give their time and energy to volunteering at the Club. The significant contribution from Club members does not go unnoticed and many members have been recognised with Life Membership over the years for their tireless commitment to the Club. The Club continues to be run by volunteers today and with the ongoing support from our members the Club's future will be secure for another 90 years and more.

The Clubhouse, under the arches, has been the centre of our Club's community and this year's refresh will ensure that it will continue to play a key role in bringing together our Club and be a place where people will gather for many years to come.



## Financial Report

### Overview

I am pleased to report on the Glebe District Hockey Club's financial position as at 31 October 2021 and its performance over the past 12 months. The result for the year was a profit of \$7,776.29 (versus a loss of \$252.32 in 2020)

The impact of the continuing COVID-19 pandemic resulted in another disrupted season. After a period of hibernation, the season was cancelled halfway through the Women's and Men's normal season fixture. Despite this unfortunate turn of events, the experiences of 2020 helped the Club to forge a plan of action in terms of adjusting player fees and revised operating expenses due to the disruption.

### Breaking down the Financial Statements for 2021

#### **Player Fees:**

At the beginning of the season, it was anticipated that regular fees would be re-introduced due to the expected full season. In response to the cancellation of the season in June, fees were adjusted accordingly and 50% of the regular fee amount was required for payment only. Players that registered prior to the 2020 season commencement had their Hockey NSW Registration Fees waived for the 2021 season.

A number of players who had paid their playing fees in full prior to the 2021 season being cancelled will be eligible for a credit towards playing fees in the 2022 season. As in previous years, the NSW Government Active Kids Rebate was utilised by many families, subsidising \$8,650 of our Junior playing fees. For families that took advantage of this Rebate, along with the discount for each additional child per family, the Junior playing fees were capped at \$100 per family.

#### **Sponsorship, Grants, Donations and Other Income:**

We remain incredibly grateful to all our loyal sponsors (Galluzo's, Pilcher Residential, Assure Wealth, JDH Hockey, Mindful Baker, RTP Physio and the Toxteth Hotel) for continuing to support GDHC, in light of the difficulties felt by many small businesses in 2021.

The Board has identified a need for a Sponsorship and Grants Coordinator in 2022. This role will focus on creating mutually beneficial arrangements with our sponsors and will endeavour to seek new sponsorship and grant opportunities in 2022.

The club was able to utilize funds raised from the combined 90<sup>th</sup> Anniversary and Arthur Stubbs Foundation night to contribute towards the Clubhouse Refurbishment. Over \$30,000 was raised on the night. The Arthur Stubbs Foundation also subsidised Men's and Women's coaching, Junior umpiring and coaching development and Representative allowances for our state players.

The club was once again successful in securing a grant from the City of Sydney council that subsidised the rent of the clubhouse. This grant is worth approximately \$9,044 per annum and is subject to annual reviews.

### **Social Functions & Raffles**

As mentioned above, the Club held a combined 90<sup>th</sup> Anniversary and Arthur Stubbs Foundation Fundraising Night in June. Additionally, the Club continued to receive generous donations to the Foundation which will be utilized to fund the Junior Development Program in 2021, the development of our Junior players, umpires and coaches as well as support our Men's and Women's coaches. As with 2020, the 2021 Presentation Night was unable to take place.

### **Bar Trading**

There was minimal bar trading activity in 2021, due to the inability to host social functions at the Clubhouse, along with Junior trainings on Wednesday evenings. Following the clubhouse refurbishment, we look forward to hosting many social events and functions at the Clubhouse in 2022 and to also encourage overall engagement at our home base in Jubilee.

### **Investment Income**

Historically low interest rates continue to impact interest income. This is forecasted to remain the case for 2022.

### **Playing Costs**

Total playing costs were slightly increased compared to last year. This was mainly due to the additional turf training sessions at Bankstown and higher Costs for the Junior Club due to increased equipment purchases and association fees. As with 2020, the coaching expenses for both the Men and Women were subsidised by the Arthur Stubbs Foundation.

### **Conclusion**

Unfortunately, as with 2020, 2021 has proven to be yet another difficult year. Nevertheless, it has shown that our great hockey Club remains resilient to any challenge it is thrown.

To the Board, thank you for your support, patience, and good humour during another tough season. To our outgoing Board members, thank you for your hard work and dedication this year.

Volunteers help to build the backbone of the Club, and as always, I encourage any members to put their hand up to help out - whether your contribution be big or small, it all makes a difference. I look forward to seeing GDHC thrive in 2022 and gathering under the arches together once again.

### **Josh La Spina**

Finance Director

**Balance Sheet**Glebe District Hockey Club  
As at 31 October 2021

	31 OCT 2021	31 OCT 2020
<b>Assets</b>		
<b>Bank</b>		
Cheque Account	78,517.42	60,118.70
Debit Card	2,055.38	2,877.36
Savings	274,234.02	273,948.67
<b>Total Bank</b>	<b>354,806.82</b>	<b>336,944.73</b>
<b>Current Assets</b>		
Cash on Hand	500.00	500.00
Stock on Hand	4,231.00	1,200.00
Trade Debtors	7,470.00	9,579.00
<b>Total Current Assets</b>	<b>12,201.00</b>	<b>11,279.00</b>
Equity Investments	2,292.00	1,608.00
<b>Total Non-current Assets</b>	<b>2,292.00</b>	<b>1,608.00</b>
<b>Total Assets</b>	<b>369,299.82</b>	<b>349,831.73</b>
<b>Liabilities</b>		
<b>Current Liabilities</b>		
Grant Income	35,761.98	26,258.56
GST	2,777.41	1,329.39
Trade Creditors	11,808.29	11,067.93
<b>Total Current Liabilities</b>	<b>50,347.68</b>	<b>38,655.88</b>
<b>Total Liabilities</b>	<b>50,347.68</b>	<b>38,655.88</b>
<b>Net Assets</b>	<b>318,952.14</b>	<b>311,175.85</b>
<b>Equity</b>		
Current Year Earnings	7,776.29	(252.32)
Members Funds	311,175.85	311,428.17
<b>Total Equity</b>	<b>318,952.14</b>	<b>311,175.85</b>

## Profit and Loss

### Glebe District Hockey Club For the year ended 31 October 2021

	2021	2020
<b>Playing Fees</b>		
Fees - Juniors	23,853.64	21,232.73
Fees - Men	18,358.17	19,140.00
Fees - Women	20,017.27	22,112.72
Total Playing Fees	62,229.08	62,485.45
<b>Other Revenue</b>		
Bar Trading	159.18	650.00
Equipment Trading	(2,426.56)	(3,800.00)
Social Functions & Raffles	16,300.76	-
Sponsorship, Donations & Other	30,414.00	22,371.23
Total Other Revenue	44,447.38	19,221.23
<b>Investment Income</b>		
Interest Income	285.35	1,211.04
Dividends	96.00	96.00
Share Gain/(Loss)	684.00	(702.00)
Total Investment Income	1,065.35	605.04
Total Trading Income	107,741.81	82,311.72
<b>Gross Profit</b>	<b>107,741.81</b>	<b>82,311.72</b>
<b>Operating Expenses</b>		
<b>Playing Costs</b>		
Playing Costs - Juniors	20,790.68	12,601.04
Playing Costs - Men	25,482.72	29,573.33
Playing Costs - Women	25,613.82	24,344.17
Total Playing Costs	71,887.22	66,518.54
<b>Other Expenses</b>		
Accounting & Audit	500.00	500.00
Administration Costs	1,254.00	9,687.49
Bank Fees	268.74	253.23
Repairs and Maintenance	11,699.85	536.81
Representative Allowances	2,000.00	1,000.00
Social Functions	11,490.10	-
Trophies	-	3,614.42
Website Administration	865.61	453.55
Total Other Expenses	28,078.30	16,045.50
Total Operating Expenses	99,965.52	82,564.04
<b>Net Profit</b>	<b>7,776.29</b>	<b>(252.32)</b>

## Auditor's Report

### TO THE MEMBERS OF THE GLEBE DISTRICT HOCKEY CLUB INC

#### SCOPE

I have audited the financial report of the Glebe District Hockey Club Incorporated for the year ended 31 October 2021. The elected committee of the Club is responsible for the preparation and presentation of the financial report and the information contained therein. I have conducted an independent audit of the financial report in order to express an opinion on it to the members of the Club.

My audit has been conducted in accordance with Australian Auditing Standards to provide reasonable assurance as to whether the financial report is free of material misstatement. My procedures included examination, on a test basis, of evidence supporting the amounts and other disclosures in the financial report and the evaluation of accounting policies and significant account estimates. These procedures have been undertaken to form an opinion as to whether, in all material respects, the financial report is presented fairly in accordance with the Australian Accounting Standards and the provisions of the Associates Incorporations Act of (NSW) so as to present a view which is consistent with our understanding of the financial position of the Club, the results of its operations and its cash flows.

The audit opinion expressed in this report has been formed on the above basis.

#### AUDIT OPINION

In my opinion, the financial report presents fairly the financial position of the Glebe District Hockey Club Incorporated as at 31 October 2021 the results of its operations and its cash flow for the year ended 31 October 2021 in accordance with applicable Accounting Standards, and with the provisions of the Associations Incorporations Act of (NSW).

**Date:** 4<sup>th</sup> December 2021

**Firm:** Stephen W Van & Co  
CPA

**Address:** 2/524 Canterbury Road  
CAMPSIE NSW 2194

**Signed:** \_\_\_\_\_



**GLEBE DISTRICT HOCKEY CLUB INCORPORATED  
STATEMENT BY OFFICERS  
FOR THE YEAR ENDED 31 OCTOBER 2021**

In the opinion of the officers of the Club:

- a)** The accompanying Income and Expenditure Statement is drawn up so as to give a true and fair view of the results of the Club for the year ended 31 October 2021.
- b)** The accompanying Balance Sheet is drawn up so as to give a true and fair view of the state of affairs of the Club at 31 October 2021.
- c)** There are no circumstances, not otherwise dealt with in the financial statements that would render any amount stated in the accounts misleading.

For and on behalf of the officers of the Club:

Officer

*Glaspina*

Officer

*Aheath*

Dated this

4<sup>th</sup> December 2021

## 2022 Planning and Strategy Refresh

During September, the Board met to determine our 2022 priorities. It is these priorities that will result in a demonstrable uplift for our members and strengthen our Club offering.

Every portfolio – Junior's, Women's, Men's, Development, Communications, Administration and Finance, were reviewed at a very comprehensive level. Through that work we reaffirmed:

- ✓ At GDHC diversity is a key strength
- ✓ Our players are represented across every age division, across all associations in which we align to and play in almost every grade available
- ✓ Juniors are our future
- ✓ We connect with members at various levels and stages of their playing careers, and
- ✓ We are financially strong with added support from a range of sponsors and our Arthur Stubbs Foundation

As a Board we understand that:

- ✓ Similar to most sports in Sydney, playing hockey is expensive
- ✓ Access to a local **full size** turf to facilitate training for 20+ teams will remain a challenge for the foreseeable future
- ✓ For our Junior boys and girls, the threat of losing them to other high profile sports, such as AFL and Soccer, is very real
- ✓ Attracting top talent is challenging, and
- ✓ Identifying Coaches for every team is a must, and supporting them throughout their tenure is critical

At the conclusion of our planning period, we landed on 3 priorities.

1. **Improve.** By addressing our challenges.
2. **Retain.** By delivering a superior Club experience.
3. **Grow.** By ensuring a sustainable future.

The Board has defined 16 specific, purposeful areas of focus that we have, in part, already commenced delivery of. These areas of focus were determined with a 'Whole of Club', inclusive community lens applied, and each align to our priority areas. Further, these areas of focus were informed by:

- ✓ Direct feedback from members to the Board
- ✓ June 2021 member survey results
- ✓ 2021 GDHC membership data

The planning period was rich in conversation and the Board worked hard to ensure that the end result be meaningful, and the priorities identified achievable.

The Board will endeavour to keep conversations such as strategy 'real', and so we have produced a simple one pager we call our Strategy on a Page. We encourage you to be familiar with it, seek answers to any questions you may have and importantly, be involved in driving it forward.

However, as with any good strategy, success will come from how we execute against it. To that end, support from our members will be critical. There are many ways in which you can be involved, whether that be a light touch approach or a more significant contribution. Opportunities include:

- ✓ Participation in committees
- ✓ Applying your unique skill sets to key 2022 roles:
  - Coaching
  - Clubhouse Managers
  - Financial Grant Application Coordinator
  - Website Manager
  - Social Media Managers

If you would like to understand the strategy further, please reach out to me or any of our Directors.

Our 90 years of Club history is an achievement we can all feel proud of. Our history however should inform our future, not direct it. With our collective skill set and strong desire 'to do good', we have an opportunity to deliver a strategy that will **offer a modern-day hockey Club experience for our members and families to connect with, whilst respecting our history and traditions.**

**Sue Heath**  
Club President

## 2022 Strategy on a Page

### Our Purpose

**To offer a modern-day hockey Club experience for our members and families to connect with, whilst respecting our history and traditions.**

### Our Aim

**To have a Whole of Club approach and be an inclusive community.**

### 2022 and beyond – our priorities



#### IMPROVE

##### Address challenges

1. Deliver a holistic and rich Club experience for players and families
2. Communicate GDHC player and member expectations against culture and values backdrop
3. Enhance our GDHC Junior Development Programs including playing, umpiring and coaching
4. Implement and communicate consistent selections approach
5. Determine and deliver GDHC's sustainable approach to coaching
6. Provide transparency to members regarding GDHC fee structures, process and timelines for registration completion



#### RETAIN

##### Deliver a superior Club experience

7. Field strong committees across each portfolio to deliver a superior Club experience
8. Drive deeper connections and cohesion across the Club
9. Ensure a consistent Junior to Seniors transition program is established and maintained, including mentoring opportunities



#### GROW

##### A sustainable future

10. Promote activities to deliver Mental, Physical and Social Wellbeing
11. Promote GDHC awareness and accessibility
12. Support coaches to target competitiveness in a sustainable way
13. Refresh external sponsorship proposition and increase sponsor support
14. Access new financial Grant opportunities
15. Formalise Clubhouse operation and reporting
16. With City of Sydney Council support, secure regular GDHC accessibility for Crescent turf

## Our Values

Our Club is built on four core values that play an important role in the sustainability of the Club. It is these values that have underpinned the Club's growth over the past 90 years. They are also the cornerstone of the Club's strategy and will support its future.

### Family

The GDHC is a family, an intergenerational community which values highly the mate ship and lifelong friendships formed as we enjoy our hockey and our interactions with one another.

### Equality

At GDHC everyone is equal. We are not elitist – we are a Club for all. We base our attitudes on respect – respect for our team-mates across the Club, our opposition, our officials, our supporters.

### Contribution

At GDHC we recognise that we have a legacy to pass on and so we give back across all areas of the Club. We pass on our skills and knowledge by developing our own Juniors and by looking after them in the game and in life.

### Commitment

We recognise that dedication and commitment give us the results we achieve. We work hard, play hard, train hard. Our team game is characterised by innovation, fair play, sportsmanship, courage, determination and a never give up attitude.

## Kate Alexander, Thank You

After 5 years as Women's Director, Kate Alexander has decided that it's time to step aside.

Kate is a valued member of our Club and her contribution over many years is significant. From coaching our Juniors over a 10-year period, playing hard with our third grade Women's for 6 seasons and of course helping shape our great Club in her role as an active and passionate Board Member.

We will miss Kate's knowledge of the game, her genuine connection with people and her ability to bring logic and calm to a conversation.

Under Kate's leadership, our GDHC Women have been represented with care and purpose.

On behalf of our Club, we extend our sincere gratitude and appreciation to Kate Alexander.



*Les Wark, Life Member and Kate Alexander*

## Administration Report

A half-season takes the same amount of planning as a full one, so I think it would be remiss of us to write this year off. Although the Board had a quieter year once lockdown hit, Sue ensured we regrouped with several planning sessions resulting in the updated strategy. Thank you Sue for your tireless work.

On a personal note, it's my final season in the maroon and white (for now). I'm moving to Newcastle with wife Nikki, and kelpador Stanley, to start a family. I look back at the past four years fondly – derby days, pre-season runs up that bloody hill (if you know, you know), hard-fought wins, sideline chats and doggo pats.

Volunteering was key in staying connected to the sport, due to injury and Covid-interrupted seasons. A big thank you to my teammates and Ross Bougoukas, Carole Wark, the Women's Committee and the Board who have all provided excellent support and kindness.

As I sign off, I recall one of my highlights this season on the training pitch. It was the monthly 'Juniors train with Seniors' session at Cintra and we were practising our reverse hit 'tommas'. I managed to nail a once-off powerful tomahawk into the top right corner of the goal. The kids were in awe, but it was a total fluke – there is a reason I'm a defender! Anyhow it made me smile; there is a lot of passion and enthusiasm in the Club and it's our Juniors who will lead the way.

All the best and thank you.

**Kat Hughes**

Administration Director

## Communications Report

This was my first year in the role of Communications Director and what a year it was.... supposed to be. We kicked the season off with big plans for the year, particularly for social events and planning. Unfortunately, anything we had planned after June was scrapped due to the lock-down and curtailment of the season.

We were lucky enough to celebrate the **90<sup>th</sup> anniversary** in early June and get the **Arthur Stubbs Foundation Fundraiser** of the ground. This was a huge undertaking, particularly as my first task in the role. The evening was a great success and we raised over \$30,000. It would not have been possible without much support from people all over the Club coming together. I would like to say a massive thank you to Elena Hux and Kirsten Taylor for all their hard work in preparing and planning for the event. Their ability to throw a party cannot be underestimated!

So many people contributed to the evening. Thank you to Aaron Oman for sourcing donations to the raffle and auction, all those people that made donations to the auction and raffle and on the night, Aleks Manou for his video editing skills and David Pritchard for his photography on the night. Our two fantastic MCs, Amelie Roediger and Sam Alexander-Prideaux, held the evening together. And thank you to Sue Heath, whose ability to hustle behind the scenes, roll up her sleeves, and rally people to action is invaluable. Thank you.

One of the main sources of Club information (for new and existing players) is the **GDHC website** and when I took on the role, this was one of my priorities and with Alek Manou's skills in this area a refresh of the website was possible. The site is now easier to navigate, the design is slicker and information easier to locate. This was a significant overhaul by Alek's and having this in place for the 2022 season is a great achievement. There are still further aspects we would like to include on the site and over time we hope to build these out as well.

The Club plays a significant role in the community and this year was going to see us launch our first **Mental Health Awareness round**. With the season cut short, we opted to run an online campaign in place of the round to collectively show our support for Mental health awareness on and off the hockey field. This is an important initiative and was particularly salient throughout lockdown when we were unable to see our teammates and ask how they are. We look forward to being able to go ahead with our first physical round in the 2022 season.

Our **Social Media** channels are key in keeping us connected to the Club, particularly when we were unable to train and play together. We will continue to utilise these to share Club news and information and to promote the successes of the Club externally. Our Instagram and Facebook channels have been given an uplift this year and we encourage members to share their pictures with us as we love to hear about and share your news. There's no such thing as an over share?!

We had many plans for **social events** throughout the season including the unveiling of the Clubhouse, trivia nights and a pub crawl and we're excited to go ahead with many of these next year.

With the Clubhouse refurbished and reopen we also have more opportunity to make use of the space in a social setting.

Running and managing social events, maintaining momentum on our social channels and ensuring that we are regularly communicating with our members and promoting the Club externally is an important part of the Club's strategy and we're always looking for volunteers to help support our social events and social media.

We go into the 2022 season with a strong foundation - we have a new shiny website, a refurbished Clubhouse, a calendar of social events to plan, good engagement across social media and we're also working on more external marketing of the Club to attract new players across all parts of the Club.

Let's hope that we can go ahead with all our plans for 2022.

**Rosa Smith**

Communications Director

## Junior Report

It is my pleasure to present to you the Juniors Report for 2021 season. 2021 has been another disrupted season for our Juniors, with the season ending abruptly in the latter part of June as Sydney locked-down in response to the Delta COVID strain. In this 2021 Juniors Annual Report you will find a snapshot of the season as played until June. And when we couldn't play hockey in the usual way, we adapted.

### Live Online

In a Glebe District Hockey Club first, our Juniors took their training "live online". Our U9s led the way, being the first group to embark on training via this medium at the initiative of Abbie Sen and Molly Busch (2021 U9 Hornets coaches). Abbie and Molly are our youngest coaches (themselves players in our 2021 U17 Redbacks team) and we congratulate them on their initiative and commitment to their U9 team in getting "live online" training going.

This was soon followed by our Glebe Development Academy going "live online" for all Juniors. Led by Katrina Cochrane, our Development Director, and supported by other Juniors Coaches. Glebe Juniors "live online" not only kept our Juniors active during the lockdown but was a great opportunity for our Juniors to continue to build specific hockey skills for the future and to continue to connect with and support our teammates and our Club during the challenging lockdown time.

### Contribution

Seeing the commitment from our coaches to regularly running the "live online" sessions throughout the lockdown reminded me of how fortunate we are to have such fantastic and skilled coaches at Glebe who also truly care about our Junior players, their health and their development. Throughout the 2021 season I saw our coaches and managers going the extra mile for their players time and time again - this is one of the things that differentiates our Club from other Junior sporting Clubs. And it is inspiring. Thank you to all 2021 Juniors coaches, support coaches and managers for this very important work.

We have very few paid positions at Glebe and almost everyone involved is volunteering their time. In 2021, we had 11 Junior teams plus a Minkeys group of about 30 players. There were 3 U9 teams and 2 teams in every other age group. We had players new to our Club in every age group and players new to hockey in every age group as well. We had 16 Juniors coaches and 14 team managers to bring this all together as well as the many coaches supporting the Development Academy. This is a massive effort.

Juniors contribution doesn't end there. Many of our Juniors families (and our Seniors) contributed in other ways such as through working on the BBQ, photography, writing website content, uniform seconds, social media and other Juniors administration functions. Thank you all for the great work and your contribution. It could not be done without you.

Our Juniors player numbers are growing - we look forward to continuing to work with our Juniors families to provide the solid "people" infrastructure we need as a Club to support the anticipated growth in our Juniors numbers in the next few years.

### **Umpires**

Our umpires, led by the very organised Peter Bestel, again had a fabulous year and learnt a lot. Developing Junior umpires is fundamental for a community sport such as ours and several of our Juniors, from our U13 to U17 age groups, have worked on building their umpiring skills this season and making this important contribution to their Club. We were very proud to see some of our more experienced Junior umpires, Will Brine and Cate Heath, umpire at the Junior State Carnivals this year. Thank you to Peter for your commitments to building our umpiring group and to all umpires who supported Junior games this year.

### **Representatives**

Congratulations to all our players who played at representative level this year. This is outlined in more detail in the Juniors Annual Report. In summary, we had 38 SEHA field reps, 6 SEHA indoor reps, Orlando Travis played for NSW in the Men's U18 National Championships and Airlie Goodridge, Emilie Sirdic and Jessica Weatherall joined the NSW U13 Girls State squad. Zane Goodridge, Will Brine, Molly Busch, Jake Evans, Billy Pritchard and Abbie Sen all joined the 2021 Sydney Metro Academy Pathway Squad. Congratulations to all.

### **Inclusivity and life**

As our Juniors tell us, Glebe is more than just playing hockey. When asked in mid-2021 about what they liked about Glebe Hockey, our Juniors invariably mentioned their teammates – hockey was fun, their teammates were kind and inclusive and they loved the game (for various reasons the skill, the challenge, scoring goals, the fitness and so on).

Glebe Juniors is about supporting the development of all our Juniors in hockey and life. We teach many life skills at Glebe... encouraging our Juniors to develop their leadership and sense of service to the community via participation as a Club coach of our younger Juniors, Minkeys support coaching (for U15 and above), being ball-persons for Seniors games (U13s) and serving on the BBQ (anyone from age 7 up this year) to name a few. These and many others are life experiences that make an impression and stay with our Juniors their whole lives while also building human skills.

### **2021 becomes 2022**

It is a real privilege to be in this role at the Club and to be able to support our Juniors and their families. Thank you to our Club President, Sue Health, and our Glebe Board. Sue and the Board are making great headway for the Club on key issues, and they are committed, skilled, passionate and generous with their time and are taking the action needed to take our Club into the future. This is an exciting time for our Club, and I look forward to seeing the work of many bear fruit in 2022.

To our Juniors who have now played their last Junior games in 2021...Juniors didn't finish the way you expected. Thank you for the commitment, the positive attitude and the many positives you have brought to Juniors in 2021 and in your time as a Junior player.

As we look to 2022, now just around the corner, the general sentiment from most is let's just get the kids out on the field. We can no longer take it for granted that we will see a full hockey season. And with that, we value more what we can do. Each game, each training session, each Development Academy, each social event becomes something we no longer take for granted, that we no longer assume we are entitled to, and we value it more.

Thank you everyone for an unusual but great year. I'm excited to see what our Juniors do in 2022 and what we all do together.

**Tara Taylor**

Juniors Director

***To read the full 2021 Junior Report inclusive of pictures  
please go to the Annual Report page on the website.***

## Development Report

### Fitness Training

We kicked off the season with the usual Pre-Season Fitness Training that includes the traditional Blackwattle Bay, Stair and Hill Runs along with the challenging Glebe Special - The Figure of 8's, leading charge for ensuring our fitness levels were back on track. Using our fantastic Jubilee Oval, and the occasional Wednesday Camperdown Session, we provided the opportunity for our older Juniors, and Senior Men and Women players from all grades to participate in a variety of Fitness sessions focusing on Endurance, Strength, Agility, Power and Speed with the Speed Parachutes always being a popular and fun inclusion into the training sessions.

We invited new Club members to join us, and it is always fantastic to see our community being so supportive and motivating of each other to try their best and give it their all for that one last set, interval, or encouraging each other to make it up that final hill run for the session. It was also a great opportunity to take a step back at the end of the sessions to catch up for a well-deserved chat and occasional beverages.

It was also the first time we have offered Junior Fitness Training Sessions on a Wednesday evening at Jubilee oval throughout the season with our enthusiastic U11-U17 players turning up to improve their hockey fitness in preparation for their Club, school and Representative teams. It was a shame the season was cut short, and this was not able to continue throughout the full season.

### Junior Development Academy

Stepping back onto the pitch is always an exciting part of every season and we kicked this off with our weekly Junior Development Academy Sessions over 6 weekends leading up to the start of the season. This was off the back of the sessions we had run at the end of last season and the participation continues to grow. We had over 30 juniors from U9's-U17's participate in our first session of the year, with the participation numbers continuing to grow each week.

We are so fortunate to have such a great array of skill, experience and enthusiasm within our GDHC family and I would like to say a BIG thank you to all the players and coaches who assisted with the Junior Development Academy sessions. A Special mention goes out to our Club superstars Ken Wark, Craig Martin and Ross Bougoukas who put their hands up for every Academy session throughout the year and also volunteered their time to attend Redback training sessions and assist our Junior players when they participated in the *Juniors train with Seniors* at the Tuesday evening sessions.

A BIG Thank you also to all our 1<sup>st</sup> & 2<sup>nd</sup> Grade Senior Men and Women - special mention to our regular coaches: Sarah, Mack, Cam, Kat, Sam, Shani and Emma, who also put their hands up to assist with the Junior Development Academies throughout the year. To all our Club players and GDHC family members who volunteered your time to share your knowledge and skills with our Juniors, what

great role models we have within our Club, and I know the juniors really appreciate all your hard work and support - they really do look up to you all.

Throughout the season we continued to run 2 Academy sessions a month and alternated these across Cintra and Camperdown Training sessions (20 sessions in total), and a big thank you to all our Junior coaches, managers and 1<sup>st</sup> / 2<sup>nd</sup> grade players who assisted with leading the academy sessions at these sessions. It was here that we offered the opportunity to not only assist our players but also provided our coaches support with their drills and training techniques. It is always fantastic to see such engagement from our players and coaches at these sessions.

### **Goalkeeper training**

We are very fortunate to have the skills of our 1<sup>st</sup> grade Men's and Women's goalkeepers - Aisling "Ash" Klimoski and Ben Smith who stepped in and provided our Junior keepers with some amazing coaching opportunities. The professionalism, support and motivation Ash and Ben provided our keepers was fantastic to watch and I know the Juniors really appreciated the opportunity to learn from the best. It just goes to show how much depth and experience we have within our community.

A big personal thanks to Ash who also supported our Junior keepers at their Tuesday sessions and our players who were lucky enough to be playing goalie that week on their team rotation. Ash constantly follows up with the keepers personally to see how they are going and asks me how she can best support the keepers as they progress through their Club and rep experience as well as supporting our Junior goalies who transitioned into senior teams as well this year.

### **Team trials and selections**

Our strongly contested team trials and selections were held at the start of the season for our junior Redback teams and Senior grades. It is at this time we know the season is upon us and a big thank you to all the coaches, Club captains and selectors who assisted with the trial games and team selections over a few busy weeks of hockey. Many hours are spent on the pitch, on the sideline and in consultation with Club captains and directors for our 2021 playing squads to be selected.

We continued to welcome many new Junior players to our teams throughout the season and it was fantastic to see the participation from all players in our Development Academy sessions where they had the opportunity to learn the basic skills from our experienced players.

### **Glebe at Glebe**

The annual *Glebe at Glebe* evening again offered the opportunity for our hockey community to get together and to invite and welcome new members. We had our Senior players out on Jubilee Oval running some drills for our Juniors and there is nothing better than seeing our Minkey Players running alongside our U9-U17 players. The day was a great success, and it was fantastic to have our Junior

players back on the ground and having fun playing a sport they all enjoy so much and being led by our Senior players.

The evening also offers the opportunity for our current and upcoming umpires to commence or continue with their umpiring accreditation process, and I encourage everyone to consider this as a great development opportunity for next season.

### **Umpires**

Peter Bestel and Lou Tapsell did an amazing job on supporting our Junior and Senior umpires each week and there is nothing better than watching our older, more experienced Junior umpires on the field supporting our new Junior umpires who have taken the task of picking up the whistle for the first time to umpire our U9-U17 games. Each of these umpires, and our Senior players who also take the time to umpire, need to be thanked and congratulated on a job very well done. We have also had many of our Junior umpires take on the challenge and opportunity to umpire at State Championships and carnivals over the season and we are always very proud to see Glebe umpires out on the field doing what they do best.

### **Representative teams**

We had many enthusiastic Juniors and Seniors nominated for representative teams this season and had the opportunity to trial and be selected for SEHA, School and State representative squads. It is fantastic to see such a large contingent of Glebe players stepping up and developing at a high level and enjoying the opportunity to enhance their playing performance.

It was unfortunate that we did have many age groups unable to participate in their state and National championships this year, but we are inspired by many of you continuing to apply yourself to training the best way possible and joining in on our online academy and fitness sessions and we look forward to seeing you all step up again in 2022.

### **Lock-down opportunities online**

After last season, you wouldn't think we would find ourselves again in a shortened season for 2021. We had just started to find our stride across all teams from U9 - 1st Grade senior teams. Our coaches were starting to find those team connections and our players were starting to feel comfortable and confident with their teammates on the field and the scores were starting to represent all the hard work the Directors, Coaches, Managers and players were applying to their training sessions and game days.

We had to take the time to step back off the pitch again and it was at this stage that we took a difficult and frustrating situation for our Glebe Family and Community and searched for opportunities. We appreciate how frustrating it is to not have the support of your teammates and we all started to really miss our training sessions, game days and the chance to socialise as a Club and as a community. It was here that Glebe Hockey Club implemented new opportunities

that have never occurred before. We used the chance of social media and technology to remain connected and more importantly support our community in difficult and unexpected situations.

*Monday Minute Madness* was created where we were offering the chance to share some fitness training opportunities for our community to not only keep us fit, keep us engaged, keep our bodies and mind healthy but the chance to explore new opportunities you can do with fitness at home or outdoors with no gym or equipment required. We started to get special requests and the feedback we received is greatly appreciated (secretly, it also helped keep me connected and engaged as well, so thank you GDHC community).

*Wednesday Weekly skills sessions* were also created to encourage us to keep up with our basic skills and techniques by providing skills and drills that could be performed in small or large spaces with minimal or no equipment - these were also met with amazing feedback that was greatly appreciated.

I also need to make a special mention to Siala Cochrane (U13 player) who was responsible for being the videographer for both weekly videos, she did a great job filming - especially on the extremely windy days - which seemed to be almost every week!

The best outcome of our lockdown experience was the introduction of our first ever GDHC online Training sessions with our ONLINE JUNIOR DEVELOPMENT ACADEMY SESSIONS. We ran a total of 6 sessions over the lockdown period including our 2 school holiday clinics. We saw this as an opportunity to keep our Junior players engaged and connected, as we do appreciate, not being able to see each other on and off the pitch, plays a massive part for our physical and mental health - not to mention to help parents with a form of distraction for the kids. The online academy sessions were an absolute hit, and we were overwhelmed with the number of Junior players who were super keen to participate and engage in these sessions and again, the feedback we received was very humbling and appreciated.

I was blown away with how creative our players can be, and we can now see, it doesn't matter what equipment you have or do not have, what space you have indoors or outdoors, it's amazing what you can do with a few tins of tuna, water bottles, Tupperware containers as markers, or how you can still practice your skills with any type of ball if you do not have access to a hockey ball. I have even had a parent say the marks on the side of the house or the noise of hockey being played indoors on floorboards or tiles, was worth it to see the enjoyment their child had from the experience.

A MASSIVE thank you to our coaches Claire Prideaux, Abbie Sen and Bill Neild who assisted with the online sessions and leading breakout rooms so the players could connect not only as a community, but also have the chance to connect with their teammates. It was a massive success with the highest number of participants in one session being close to 60 Junior players. As a Club, not only have we

introduced a new option of training and connection, but it also allows us to be current and demonstrate that we are in a position to adapt to support our players, members and community when needed. You would be very surprised at the number of comments I received when out in the parks running these online sessions from people passing by and how impressed they were that we were offering the opportunity to keep our Club engaged.

I thought when writing this report last year that I was including some of the most unique inclusions that I never thought possible for us as a hockey community and sport, however, this year, I personally feel we have outdone ourselves and shown again, no matter what happens, as a strong community, we pulled together to ensure that we were inspired and motivated to kick off a new season with fresh energy after a difficult year last year.

After our recent lockdown and more importantly, identifying some new opportunities to support the development of our community, I am extremely thankful for the ongoing support from not only my fellow board members, but the GDHC family and community as a whole. We stood up and demonstrated what it means to be the community we are, and it has really opened up more opportunities for the development of our Club players and members moving forward.

Thank you to all the coaches and managers who continually go above and beyond planning sessions, inspiring our players at each game and encouraging them to just be the best they can. Without the support of our community members stepping up and helping with coaching, academy sessions, umpiring, managing, making the milestone cupcakes, and our board members working extremely hard across all areas of the Club, we would not continue to grow, improve and develop each training, each game or each year.

It never ceases to amaze me the passion and enthusiasm we have within our Club to just make things happen and ensure as a Club we support and work together to make individual, team and Club experiences the best we can.

2022 is going to be a time for new and exciting Development opportunities for our Club, and I really look forward to seeing our Juniors, Seniors and Club grow and develop and achieve new milestones.

**Katrina 'Shorty' Cochrane**

Development Director

## Women's Report

2021 will always be remembered as the season that was ground to a sudden halt at the halfway mark. The season where we did not get closure, celebration, or the opportunity to claim a few titles. We were right at the point where our Juniors were finding their form and confidence to try new skills, where those who were training hard twice a week were hitting peak fitness and our teams were settled and doing well.

In my last season as Women's Director, I am disappointed that Glebe Women's missed the opportunity to show our depth and reflect the work of our coaches and managers. By the end of round one, when the season ended, we had three of our six teams as dominant forces in their respective divisions - Third Grade was second on its ladder, Sixth Grade was first, and Fifth Grade was fourth. Our other three grades were not far behind, and I am confident it would have been a year with at least four Women's teams in the finals. I had hoped to walk away from the role after watching Sixth Grade, the team looking the most promising in 2021, smash its grand final under the guidance of the wonderful Julie Phillips with the rest of us on the sideline celebrating their success. I am sad that it didn't happen and that we didn't get to have our presentation of awards, honouring excellent play and service.

I want to thank so many people for all their work to get our players on the field this season. We had 30 Women's who took roles at the beginning of the season – from organising babysitting for players to supporting Juniors to collecting fees, organising uniforms and so much more. One of the best things about our Club is the willingness of our members to help out and this season was no exception.

After five years as Women's Director, I am full of gratitude. To Les and Carole Wark for their belief in and support of me to take the role and for fostering the open, hardworking, professional, and transformative culture of the Glebe Board. Laura Schmahmann, Megan Jenkins and Alisha Middleton have made outstanding contributions as the backbones of the Women's committee, looking after all things administration day in and day out. They do the lion's share of the work, and I am incredibly grateful to them.

Lynsey Askew, Kat Hughes, Olivia Edwards, Tess Bruin and Alisha Middleton have been wonderful Club captains and support our players and coaches in so many ways. Katrina Cochrane (AKA Shorty) works her bum off as development director; Wendy Machin makes sure 90 plus Women's are kitted out in proper uniforms; Lucy Brennan and Kate Gleeson make sure we are registered and paid up; and last but not least, Lou Tapsell manages all things umpires and has been an invaluable advisor and support to me for the past five years.

Our coaches give so much to our teams, and we are so lucky to have them. Particular thanks to Matt Wark and Ross Bougoukas for their work with our top teams and their respect of and loyalty to our Women's. I also want to acknowledge the contributions of Nat White, Clare Prideaux and Helen Howe who

have given so much of their time to coaching and selecting. Thanks also to Dean Morrow, Julie Phillips, Craig Martin, Lynsey Askew, Josh La Spina, Ana Moriakis, for all of your hard work, time and care.

Glebe Women's has a strong reputation as a well organised, rule-following Club, full of good sports and integrity. That's in large part due to our six dedicated managers and the role Kate Pearsall plays to support them managing weekly team lists and match cards and ensuring we all have uniforms and numbers! Particular thanks to Allison Ryan, Kate Gleeson, Wendy Machin, Elissa Molloy, Lucy Brennan, Maddie Dell (RIP good woman), Amelia White and Rachael Beckett. These Women's get our teams on the field each week and are so thoughtful and supportive in all the ways they champion our players.

Lastly, I want to thank the Glebe Board and Sue Heath as President for supporting our Women's teams, enabling our vision and for their dedication to our future. It's a supportive and approachable Board that will welcome a new Women's Director with open arms.

May 2022 be the season where Glebe Women's reunite with determination, joy, hard work and plenty of success. May our players find much happiness playing the sport that unites us and surrounds us with inspirational teammates and friends. It's been an honour.

**Kate Alexander**  
Women's Director

## Women's - 1st Grade Report (SWHL ML2)

Team	Played	Wins	Draws	Losses	For	Against	Diff.	Points
1. Moorebank 2	8	6	2	0	23	4	19	20
2. Sydney Uni 2	8	4	4	0	7	1	6	16
3. UNSW 2	8	4	3	1	16	7	9	15
4. ND Strikers 2	8	4	2	2	13	10	3	14
5. UTS 2	8	4	1	3	6	5	1	13
6. Glebe 1	8	2	5	1	8	6	2	11
7. Briars 2	8	2	1	5	4	15	-11	7
8. RHH 2	8	1	3	4	7	13	-6	6
9. GNS 2	8	0	4	4	5	17	-12	4
10. WD 2	8	0	1	7	6	17	-11	1

After a short and sharp season in 2020 our 1<sup>st</sup> grade team was primed and ready to start the 2021 season with a bang. As we were in ML2 our goal was to start the season strong and push for a top four finish with the aim of challenging for silverware. For well-known reasons we will never know what would have been, however, we move forward. Looking at the ladder, our position suggests we would have struggled to reach our anticipated goals. Although this does not reflect how close we came in many of our games to challenging and beating our opposition.

This playing group was a great mix of youth and experience and was well balanced all over the pitch. Attendance at training was good for most of the team and the extra session added this season on a Thursday night was beneficial not only to this group but anyone in the top three grades able to attend. As a coach I felt that the essential skills were much improved compared to previous seasons and that is a credit to the hard work put in by all the players.

As stated earlier, while we were not able to complete a full season there were many positive outcomes achieved which we can build on for future seasons. A change of playing style is always difficult for teams to adapt to. This season, every player was committed to learning the new pattern of play. The more games we played, the more combinations were developed, and the quicker the Women's were able to anticipate their teammates next move. Soon, playing out of the back seemed effortless!

Another positive to come out of this season was our ability to hold onto the ball for longer periods of time without having to play forward. We were comfortable in possession and did not feel rushed to go forward for every play. This was extremely pleasing to see in our eight matches and is a great foundation going forward. The team also demonstrated their excellent basic skills and ball speed which helped take the opposition out of the equation.

As with every team there are areas in which improvement is needed. There are two areas that need addressing for this group. The first being the killer instinct in the circle. While this is a common theme amongst most teams, for us it was clear that inside our attacking circle, we did not always want the ball more than the opposition. Our positioning was much better compared to seasons past and having players in key areas was not the issue. If this can be addressed, I am certain that we would have been closer to the top of the table when the season paused. The second area is the overall team communication. This point is crucial to unlocking this team's potential. Too often it is left to the same couple of players to call the shots. When fatigue sets in this becomes too much of a responsibility for these players and that is where gaps start to appear. If we can get more players to have a voice and share the load there is no limit for this group.

I would lastly like to thank all the help and support given to us by our Women's Director, Women's Committee and the Board. Without all your tireless effort none of what we do on the pitch would be possible. I look forward to working with you again in the future and reaching our goals together.

Yours in Hockey  
**Ross Bougoukas**



Left to Right: Aisling Klimoski, Eliza Brennan, Katrina Cochrane, Kat Hughes, Olivia Cain, Emma Kelly, Sarah Brine, Alannah Howe, Maddy Scott, Clare Callinan, Alisha Middleton

## Women's 2nd Grade Report (SWHL ML3)

Team	Played	Wins	Draws	Losses	For	Against	Diff.	Points
1. Sydney Uni 3	9	7	1	1	15	2	13	<b>22</b>
2. Manly 1	9	5	3	1	16	3	13	<b>18</b>
3. MosHarbour 1	9	5	2	2	15	5	10	<b>17</b>
4. UNSW 3	9	5	2	2	13	6	7	<b>17</b>
5. RHH 3	9	5	0	4	12	13	-1	<b>15</b>
6. Moorebank 3	9	2	3	4	8	10	-2	<b>9</b>
7. ND Strikers 3	9	2	3	4	9	15	-6	<b>9</b>
8. Glebe 2	9	2	2	5	9	11	-2	<b>8</b>
9. Wenty 1	9	1	3	5	4	9	-5	<b>6</b>
10. GNS 3	9	1	1	7	7	34	-27	<b>4</b>

This season saw a new team for 2nd grade. We had some third grade promotions with Abbie Shen, Bridget Kelly, Molly Bush, Lauren McRae, who transitioned well. We had Billie Pritchard assist the team and stepped up to the demands of ML3 seamlessly.

We welcomed Hannah Goodchild in goals who did an amazing job. Hannah then took up a position on the field in our other Glebe teams, so we Grace Matthews took over in our last 2 games and the season was starting to get some goals on the board and our passing was starting to stick.

The team had a good feel, the talking was starting to really drive from Jess Higgs who as the team's best and fairest overall winner after 8 games kept the team going. Strong defence from Erin, Bronte, and Lauren with the help of Chantelle and Bronte in the mid field kept the team in good shape.

Speed up front from Tessa, and our young members Abbie and Molly was an advantage against some of the teams.

Glebe 2nd grade came away with 2 wins, 2 draws and 5 losses.

### Second Grade Team

## Women's 3rd Grade Report (SWHL ML4)

Team	Played	Wins	Draws	Losses	For	Against	Diff.	Points
1. SGR 1	9	9	0	0	32	6	26	<b>27</b>
2. Glebe 3	9	5	3	1	13	7	6	<b>18</b>
3. Sydney Uni 4	9	4	3	2	14	12	2	<b>15</b>
4. Macquarie Uni 2	9	4	2	3	11	13	-2	<b>14</b>
5. Manly 2	9	3	2	4	11	15	-4	<b>11</b>
6. RHH 4	9	3	2	4	11	16	-5	<b>11</b>
7. Cronulla Sharks	9	3	1	5	9	11	-2	<b>10</b>
8. Briars 3	9	2	2	5	7	11	-4	<b>8</b>
9. MosHarbour 2	9	2	2	5	12	17	-5	<b>8</b>
10. ND Strikers 4	9	1	1	7	4	16	-12	<b>4</b>

Glebe Women's 3<sup>rd</sup> grade entered the 2021 season full of drive and determination off the back of another successful season in 2020. We welcomed back most of the team from the previous year, with some old faces also stepping back onto the pitch. With a mix of experienced players and Junior players, the 2021 season was looking promising.

The ML4 field was varied – we felt very comfortable some weeks, while other weeks proved more challenging. However, as the season progressed, we became stronger and more confident in our ability to work well as a team.

Losing our ever-reliable goal scorer in Megan Jenkins early in the season, it was up to Amy Shipp and our Junior players – Allegra Symonds, Annie Millar, Cate Heath and Billy Pritchard- to step up. This group impressed us each week with their one-on-one ability up front, scoring goals and earning multiple short corners off the back of some fancy stickwork and strength on the ball. Supported by inners Lou Tapsell, Liv Branson, Gab Paterson and Mon Bordignon, our forward line was progressing each week and started to really find it's rhythm as the weeks passed.

Notably, the Anzac Day round against Manly proved how dangerous our scoring ability could be – scoring three goals in the first quarter through a great balance of passing and running with the ball, this proved that we had the ability to challenge the tougher teams in the field, such as St George, coming in the later stages of the season.

As always, Kate Pearsall, Amy Whalley, Ash Machin-Hunt, Hannah Goodchild and Kate Alexander were solid in the half line and backline, with Claudia Otto making some brave saves in goals. A big thank you to Lauren MacRae who would fill in for us in defence (often resulting in her playing back-to-back games).

Even though our season was cut short, it was a memorable ten weeks of good hockey and even better banter. As much as we missed having a run around, we all agreed that it was the laughs that we missed most on our Sundays.

A big thank you to Josh La Spina who stepped up to coach us once again and to our manager, Wendy Machin, for continuing to truly be the heart and soul of our team.

It will be ten years next year since Glebe has won a premiership in ML4. Glebe 3s have been in three grand finals since 2012, let's get it done in 2022!

**Monica Bordignon, Lou Tapsell and Asha Machin-Hunt**  
3<sup>rd</sup> Grade Players



Back row left to right: Lou Tapsell, Mon Bordignon, Amy Shipp, Liv Branson, Kate Alexander, Kate Pearsall, Asha Machin-Hunt  
Front row left to right: Annie Millar, Cate Heath, Lauren MacRae, Claudia Otto, Amy Whalley, Hannah Goodchild  
Not pictured: Allegra Symonds, Gabrielle Paterson, Megan Jenkins, Billy Pritchard

## Women's 4th Grade Report (SWHL ML5)

Team	Played	Wins	Draws	Losses	For	Against	Diff.	Points
1. Sutherland	9	8	1	0	37	3	34	<b>25</b>
2. UNSW 4	9	7	2	0	25	5	20	<b>23</b>
3. Moorebank 5	9	4	3	2	14	4	10	<b>15</b>
4. Bankstown 1	9	3	4	2	11	8	3	<b>13</b>
5. Sydney Uni 5	9	3	3	3	17	23	-6	<b>12</b>
6. SGR 2	9	2	4	3	9	13	-4	<b>10</b>
7. MosHarbour 3	9	2	4	3	9	13	-4	<b>10</b>
8. Glebe 4	9	2	2	5	7	19	-12	<b>8</b>
9. Briars 4	9	0	3	6	3	22	-19	<b>3</b>
10. Wenty 2	9	0	2	7	4	26	-22	<b>2</b>

What a privilege to play with and manage the best team in the Southern Hemisphere - the mighty fourth grade Women's side. This year we welcomed Jess to the Women's competition, and she did an incredible job holding her own in goals, while managing to complete her HSC in the background. We were also very happy to see Mel return to the team after welcoming the newest member of our Glebe family, gorgeous Caitlin in 2020.

Guiding the team from the back line were our fierce backs Mel and Innes who probably spent every Sunday night sucking on lozenges after all the loud words of encouragement and direction to the team during each game.

Best and fairest this year was awarded to Jade for her consistent hard work in the halves - Jade's moving interstate in 2022 and we will all really miss her energy on and off the field! Carla and Sam held the centre of the field and used their skills to set up key plays, supported by a cracking team of halves including Erin and Issy.

B and Dee are a force to be reckoned with in the front line and despite some tough battles always came off the field with a smile at the end of every game. Steph is always firing on all cylinders and rediscovered her skills for goal scoring playing up front with the forwards.

Speedy Bettina put her body on the line every chance at goals this season, Helen and Terrie also had outstanding seasons with a few goals under their belts.

Many thanks to our coach Lizey for her support and guidance throughout this short but sweet season, and also to Kenny for sharing his tips and tricks at training. A big thank you also to the partners, parents, dogs and children that cheered us on from the sidelines each week.

We are looking forward to an even better season next year. We've really enjoyed our virtual team catch ups and trivia afternoons during lockdown this year but we are so ready for more time in person and on the field next year - bring it on!

**Lucy Brennan**  
Team Manager



L-R: Innes Linton, Jess Kennedy, Lucy Brennan (with Pardi), Deanne Barnes, Helen Przybylski, Sam Iglesias, Terrie Iglesias, Bianca Osmond, Steph Boyce (with Kelsie), Jade Fox, Erin Machin Hunt, Carla O'Donnell, Mel Newton (with Ruby)



Mel Newton and Helen Przybylski



Innes Linton and Deanne Barnes



Jade Fox, Mel Newton (with Caitlin) and Sam Iglesias



(Back row L-R) Deanne Barnes, Helen Przybylski, Mel Newton (with Caitlin), Jade Fox, Innes Linton, Sam Iglesias, Terrie Iglesias and Jess Kennedy  
 (Front row L-R) Bianca Osmond, Carla O'Donnell, Erin Machin Hunt, Lucy Brennan, Issy Iglesias and Steph Boyce



L-R: Eliza Brennan, Jess Kennedy, Steph Boyce, Innes Linton, Helen Przybylski, Lucy Brennan, Carla O'Donnell, Bettina Grieve, Issy Iglesias, Terrie Iglesias and Deanne Barnes



Lucy Brennan, Jade Fox, Carla O'Donnell, Jess Kennedy, Helen Przybylski, Terrie Iglesias and Mel Newton



Frankie, Pardi, Lucy Brennan, Mel Newton and Ruby

## Women's 5th Grade Report (SWHL ML6)

Team	Played	Wins	Draws	Losses	For	Against	Diff.	Points
1. RHH 5	9	8	1	0	21	6	15	<b>25</b>
2. ND Strikers 5	9	7	0	2	20	8	12	<b>21</b>
3. GNS 4	9	4	3	2	17	12	5	<b>15</b>
4. Glebe 5	9	3	4	2	14	9	5	<b>13</b>
5. MosHarbour 4	9	4	1	4	13	9	4	<b>13</b>
6. Macquarie Uni 3	9	4	1	4	11	10	1	<b>13</b>
7. UNSW 5	9	2	3	4	11	10	1	<b>9</b>
8. Canterbury	9	1	5	3	7	13	-6	<b>8</b>
9. Sydney Uni 6	9	2	2	5	7	16	-9	<b>8</b>
10. Bankstown 2	9	0	0	9	2	30	-28	<b>0</b>

Fifth grade returned for the 2021 season excited, optimistic and ready to win. We rounded out the half season 4<sup>th</sup> on the ladder, a position we were hoping to improve on throughout the second half of the season, but it wasn't meant to be. Instead, we enjoyed celebrating milestone games with some of our seasoned players: Vicky, Renu, Susan and Kirsten all hit their fiftieth game; Olivia reached her century of games; and by the half season Shell and Sian reached a mega 150 games each. We can't wait for the many more milestones the 2022 season will bring!

As a team we would like to say a huge thank you to Craig who persevered with training us most weeks rain, hail, or shine, and to Googa who supported our matches, shouting from the sideline, with mostly words of encouragement. We are grateful for your advice, your selflessness, and your dedication to supporting us. Thank you!

This year we welcomed back our Captain, Beth, as she returned from injury to assist our fabulous defence, affectionately known as the D-Team. Alongside her were Vicky and Sian who worked tirelessly as backs throughout the season to cover our favourite goalie, Alex. Alex well and truly found her voice this season, much to the delight of the D-Team. Vicky has solidified her position as runner in short corners, copping multiple bruises after putting her body on the line almost every game. We missed Maddy on our left this year but celebrated her birthday with colourful ribbons in our hair.

The midfielders and forwards put in a top effort this season with lots of moves around the field as we navigated subs without a dedicated sideline coach. You could usually find Renu, Rosa or Susan up near the goal post with a stick on the ground ready for a deflection, or Mills positioned in the centre ready for a loose ball and quick turn to secure a goal. Kate was our fastest player on the field this season, zipping around endlessly. At centre half, Liv connected defence with

attack and coordinated play up and down the field. Kirsten was a true team player often moving around the field multiple times in a game to help cover where needed. Shell controlled the right half with ease, strategically tackling then attacking to guide the play into the circle. With the patented Elena spin and Scout, who has nailed the left-handed dribble down the sideline, the mids and forwards had a cracking half season.

With only a short nine games, players' player went to Shell, followed by Alex and Kirsten. Our top goal scorers were Mills (5), Rosa (3) and Scout (2), with Liv, Renu, Susan and Shell all scoring one goal each. Comradery occurred on and off the field with dinner and trivia nights, where the team can also be seen beating the competition. Our season was short and sweet, and we are excited for 2022 where we aim to once again hold a steady spot in the top 4 on the ladder, always eyeing off that coveted top spot.

**Beth Parr (Team Captain), Amelia White (Manager), Michelle Hancock (Vice Captain and Players' Player) and Olivia Edwards (Club Captain)**



*Alex Brien, Rosa Smith, Scout Hathaway-Wilson, Elena Hux, Beth Parr, Kate Gardner, Susan Kernott, Vicky McKenzie, Amelia White, Louisa Wilson, Sian Morgan and Michelle Hancock*



*The team wore colourful ribbons in their hair in memory of their teammate Maddy Dell who would often have colours in her hair*



*A wet training session for those dedicated soles on the field: Elena Hux, Sian Morgan, Rosa Smith, Scout Hathaway-Wilson, Susan Kernott, Kirsten Taylor and Amelia White*

## Women's 6th Grade Report (SEHA W4)

Team	Played	Wins	Draws	Losses	Forfeits	BYEs	For	Against	Diff.	Points
1. Glebe SEHA 4	9	9	0	0	0	0	39	6	33	27
2. Easts SEHA 4	9	7	0	2	0	0	18	9	9	21
3. SGR4 - SEHA4	8	6	0	2	0	0	26	7	19	18
4. Bentstix SEHA 4	8	3	0	5	0	0	9	21	-12	8
5. Briars SEHA 4	9	2	0	7	0	1	10	22	-12	6
6. UNSW Black SEHA 4	8	1	0	7	0	0	1	20	-19	1
7. UNSW Gold SEHA 4	7	1	0	6	0	0	3	21	-18	-4

What a cracking year for the team! 6<sup>th</sup> grade (in SEHA Div 4) finished undefeated on top of the ladder when the season was aborted. After 9 games and 9 wins we were 6 points clear of the 2<sup>nd</sup> team and also broke the goal-scoring hoodoo with 39 goals for and only 6 against.

Whilst winning is fun, the most rewarding part of coaching and playing with these girls and Women's is that we have built a core team that has been playing together for 3 years with an appropriate injection of new blood every season. We embody what is the best of team sport with a supportive culture, that while we love to win, we also all make howling mistakes and not once is there ever any negativity – just laughs and encouragement. We are a team of mums, daughters and Juniors taking their first steps into open Women's who can learn what it is like to come up against Women's who have been playing hockey for decades and are strong, tough and relentless. It is a big change from Juniors, and I hope this team continues in its role in supporting that transition for our Junior Women's.

This year in the spirit of what was best for the Club, we gave up our quiet achiever Goalie, Claudia Otto, to 3<sup>rd</sup> grade – where she showed she is fully capable of playing. In a spectacular trade Kerry Hunt agreed to be our Keeper and quickly settled into the team, becoming a key on field support for us all.

We had two Juniors join us this year, Jess Weatherall and Daisy Noble. Both adapted incredibly quickly to the different style of play in the team and were able to run all day – Jess as an attacking midfielder and Daisy more defensive. Both often featured in the players player points every week. Whilst we would love to have you back next season, both will no doubt move up the Women's ranks in due course.

The rest of the team were returning players. This core group of players, who now know each other and their play, are fundamentally key to why we did so well. As a coach, they are a dream. They are all so willing to play almost any position on the field – what the team needs always comes first. Gemma McKenzie-Booth as our Captain with her dance music and pre-game motivation always makes me smile and she is also one of the fittest players – able to run all day in the midfield.

Thank you to Gabe (our Smiling Assassin Striker), Roisin our centre midfielder who sets up the play brilliantly and a special call out to Kate Day – whose hockey brain is far beyond mine and supports me quietly in the background with her observations around the play.

Then the rest of the team – all who featured in players player voting at some point, reflecting the depth of talent and our capability to pull together that blinding game (we just don't know when!). Amazing effort Charlotte (Striker and Wing), Veronica (wing and occasional backline cameo), Layla (attacking midfielder), Eleanor (my partner in crime in defence with a totally unreadable slap clearance hit), Helen (the winger always in the right position on the post and saw the benefits of that with some spectacular goals), Liv (I don't care where I play – just don't bench me!).

I could never hold it all together without our brilliant left defensive midfielder and even more brilliant manager, Rachael Beckett. Never do we have unregistered players, never is the match card late and never are we short of players. People wrangling is an art and a skill. Thanks also to the roster of junior parents who were our Covid Marshalls in the dug outs – couldn't have kept everyone safe without you and your alcohol wipes!

Such a shame the girls didn't get to see the season through to completion and get to play a Grand Final. There is always 2022 - if our bodies hold up.

### **Julie Phillips**

Sixth Grade Coach and Player



**Women's Games Played**

<b>Full name</b>	<b>Total Club Games</b>
Melissa Newton	458
Helen Howe	402
Amy Shipp	327
Louise Tapsell	327
Kylie Lawson	281
Rebecca Howe	280
Kate Gleeson	256
Josie Barron	248
Kate Pearsall	228
Angela Wark	222
Ellie Williams	209
Robyn Ainsworth	209
Mary Wark	204
Raelene Lindeberg	195
Sara Bala	194
Gabrielle Wark	176
Andrea Lum	175
Rachel Wilkinson	173
Terrie Iglesias	172
Lisa Williams	167
Jessica Higgs	162
Alex Glading	160
Elizabeth Wark	158
Prue Brady	154
Tessa Bruin	154
Michelle Hancock	152
Catherine Wark	151
Sian Morgan	151
Amy Whalley	148
Clare Stewart	148
Lara Pendle	147
Monica Bordignon	147
Sarah Stephenson	147
Kaitlin Beare	140
Laura Schmahmann	139
Erin McCleave	138
Sarah Moore	129
Alanna Howe	128
Julie Newton	118
Alisha Middleton	116
Emma Brady	115

Madeline Dell	114
Pauline DeBattista	112
Lynsey Askew	110
Sue Brady	109
Aisling Klimoski	105
Nicki Osborne	105
Jasmine Howe	104
Erin Machin-Hunt	102
Olivia Edwards	101
Elena Hux	98
Jo Symes	95
Litiana Field	94
Laura Martin	93
Isabella Shannon	91
Olivia Cain	91
Madeleine Scott	89
Mary Kavanagh	89
Kate Ticehurst	88
Ana Moraitakis	86
Jena Prince	86
Emma Alexander-Prideaux	85
Sarah Brine	84
Hannah Momot	83
Kate Alexander	80
Talia Morrow	79
Nicole Larkin	77
Phoebe Kershaw	77
Asha Machin-Hunt	76
Hannah Weir	75
Priya O'Brien	75
Sharon Westmeyers	73
Katrina Cochrane	72
Katie Inglis	71
Cecile Crobach	70
Saskia Andriessen-Kleijer	70
Deanne Barnes	69
Emma Kelly	69
<i>Elena Sheard</i>	67
Ruth Stranding	67
Samantha Iglesias	67
Sophie Momot	66
Bianca Osmond	65
Claudia Otto	65
Katherine Lade	63

Lucy Brennan	63
Rosa Smith	63
Isabella Thomson	62
Jennifer Lam	62
Scout Hathaway-Wilson	62
Jackie Andrews	61
Leonie Handcock	60
Jessica Luc	58
Victoria McKenzie	58
Anna Phillips	57
Isabel Iglesias	57
Jade Fox	56
Renugah Jagadisan	56
Carla O'Donnell	54
Emilie Christie	54
Bridget Kelly	53
Steff Ball	53
Amelie Roediger	52
Emma Clemmans	52
Gina Grant	52
Teagan Howe	52
Charlie Pepper	51
Megan Jenkins	51
Kirsten Taylor	50
Sara Eldridge	50
Alexandra Brien	49
Kloe Mannering	49
Layla Riley	49
Sheridan Svetkoff	49
Amy Stone	48
Brooke Robson	48
Eden Riley	48
Kate Gardner	47
Rachel Borm	47
Amanda Rennie	45
Annie Millar	45
Cate Heath	45
Eliza Brennan	44
Gemma Mckenzie-Booth	44
Kobi Gibson	44
Julie-ann Phillips	44
Chantelle Hughes	43
Catherine Naylor	42
Phoebe Skyring	41

Rachael Beckett	41
Susan Kernot	41
Amy Molloy	40
Helen Przybylski	40
Emma Proudlock	39
Louisa Wilson	39
Rochele Berwick	39
Emily Gillett	38
Jeanne Fourie	38
Lauren MacRae	38
Leanne Molloy	38
Maddy Wonders	38
Tegan Holt	38
Amelia White	37
Sophie Cooke	37
Taryn Robinson	37
Carissa Glynn	36
Natalie Tanner-Black	36
Stephanie Goldsworthy	36
Victoria Sommella	36
Beth Parr	35
Kerry Hunt	35
Molly Busch	35
Susan Kernot	35
Bec Mcinnes	34
Cindy Liles	34
Elizabeth Sheffe	34
Katherine Hughes	34
Rachael Fillery	34
Sarah Sharples	34
Clare Callinan	33
Helen Gibson	33
Nina Van der Kley	33
Olivia Kadir	33
Allegra Symonds	32
Emma Neal	32
Jasmine Russell	32
Katie Hartley	32
Miriam Pritchard	32
Shannan Craig	32
Stephanie Boyce	32
Abbie Sen	31
Billy Pritchard	31
Fiona O'dell	31

Aishling Farrell	30
Taylah Mannering	30
Jessica Wright	29
Remi Black	29
Rhiain Murphy	29
Alyson Ashe	28
Bronte Ryan	28
Caroline Dixon	28
Fiona Russell	28
Jessica Phan	28
Prudence Dallen	28
Rachael Brophy	28
Ashlee Ryan	27
Billy Pritchard	25
Eleanor Gibson	25
Hannah Petroni	25
Jess Rue	25
Makenzi Harvey	25
Sophie Condon	24
Alice Wright	23
Beverly Simmons	23
Charlotte Burcher	23
Sophia Gibson	23
Bettina Grieve	22
Caitlin Wasserman	22
Clare Prideaux	22
Hannah Goodchild	22
Alexandra Epstein	21
Georgia Thompson	21
Meredith Marks	21
Stephanie Horst	21
Nell Duly	20
Emily Gordon	19
Innes Linton	19
Maria Nguyen	19
Olivia Branson	19
Roisin O'Higgins	19
Abbey Walker	18
Amy Hughes	18
Bronwyn Pressland	18
Emma Halliday	18
Layla Francis	18
Sharanya Maheshwaran	18
Emma Smith	17

Madelyn Smith	17
Veronica Collins	17
Gabrielle Wilkinson	17
Anna Kaskanlian	16
Emma Grant	16
Jesica Flores	16
Kate Day	16
Laure Salou	16
Lauren Peacock	16
Liz Mung	16
Mary Prince	16
Myra Pritchett	16
Nadine Martin	16
Adrienne Campbell	15
Carmen Lau	15
Colleen Downs	15
Emma Bills	15
Guusje Leichel	15
Johanna Crow	15
Kate Charge	15
Lara Frolenchenko	15
Roisin Sullivan	15
Charlie Webb	14
Jordan Brayshaw	14
Nicole Mensforth	14
Sophie Knott	14
Tania Savage	14
Casey Gibbs	13
Georgina Hunt	13
Grace Naughton	13
Mikaila O'Connor	13
Wendy Villarosa	13
Zoe Pritchett	13
Charlotte White	12
Ella Ferguson	12
Grace Dallen	12
Philippa Spork	12
Rachel Lambe	12
Sallina Jeffrey	12
Steph Anderson	12
Aimee Muschamp	11
Georgia Byriell	11
Heather Curd	11
Mary-Anne Naylor	11

Alex Kinneally	10
Becky Weldrake	10
Daphne VanderOord	10
Lillian Pritchard	10
Rhiannon Russell	10
Stacey Kramer	10
Danielle Spencer	9
Jessica Kennedy	9
Nichola Halford	9
Destiny Peris	8
Emma Verner	8
Flick Woolley	8
Hilary Knowles	8
Kristenn Wong	8
Mckenzie Carr	8
Emily Bowe	7
Katie Cheswick	7
Laura Bulley	7
Shani Middleton	7
Susie Douglas	7
Daisy Noble	7
Jessica Weatherall	7
Catalina Lucero	5
Holly Whittaker	5
Natalie White	5
Rachel Haynes	5
Amy Cottee	4
Carolina Pereyra	4
Josefina Noguero	4
Gabrielle Paterson	3
Indigo Ryan	3
Laura Atkins	3
Grace Matthews	2
Jamie Hartley	2
Sinead Simpkins	1
Coralie Currie	1

## Men's Report

2021 was an extraordinary season – the second extraordinary season a row and one we will all remember forever. I have checked Sydney Hockey's records and have confirmed that this is the first time since records began in 1928, that a season was commenced but not completed. This includes during World War 2 (when Glebe's first grade men won 5 premierships between 1939 and 1945!).

The 2020 season was halted just prior to game one but ultimately, was able to be completed in a shortened format. The 2021 season on the other hand, started on schedule, but then came to a screaming halt, right at the halfway point. This was in mid-June. The season was called off, the state was locked down and finals cancelled. There was no time for team photos.

There was an ominous feeling when the second round of COVID (the 'Delta Strain') kicked off. Whereas the first round of COVID in Australia had amazingly been brought under control by a hard lockdown and physical distancing, Delta was having none of that. Simply locking down wasn't going to be enough for this far more virulent strain.

The push moved from a strategy of containment towards one of getting vaccination rates as high as possible. This is where we are now, with some of the highest vaccination rates in the world and lower infection numbers. Hopes are high for a 'normal' 2022 season.

There were some silver linings to the season being cut short. The first is that it gave the hard-working Board of Glebe Hockey time to reflect on current procedures and work on strategies for a smoother running 2022 season. It also allowed time for badly needed renovation works to be carried out to the Clubhouse. These behind the scenes works will be key to a great season next year. There will be a renewed focus on player commitment, coaches working together, getting weekly selections right, recruitment of new players and revitalising the social scene around the Clubhouse.

So, where were we when the season stopped? Glebe's Men's teams were well placed for the finals. 4th grade, under coach Brad Goodridge, was sitting pretty in 2nd place out of 11 teams. 1st grade under coach Craig Martin were also poised for a run to the finish and were sitting 8th out of 11 teams (the top 6 go through). 3rd grade under coach Adam Campano were looking good at 7th out of 11 teams. 2nd and 5th grades were closer to the bottom of the table in 10th and 8th respectively.

There was good attendance at training for Tuesday and Thursday nights, and a buzz around the grounds on match days. Coaches and managers were working hard, and morale was high. A definite highlight for the season was Thursday night training at Bankstown, under 2nd grade coach, Mick Bougoukas. All Juniors playing senior hockey had been invited to this second session of training in the

week and attendance was good. The feedback from the Juniors and their parents is that they appreciated being included in the training sessions in an environment in which they could safely learn new skills and be exposed to the quicker game that is senior Men's hockey.

The results were great – all the Juniors playing senior hockey had marked improvements in their game play and skill levels. 4th grade was the main beneficiary, with many of the Juniors being in that team. However, several of the Juniors also made their way into higher grades, including Orlando Travis and Zane Goodridge, both having game time in 2nd grade matches this year. Orlando and Zane were some of our Juniors who gained spots on representative teams this year. Refer below to the Juniors team reports for more details.

Another great innovation this year involved our younger Juniors, who each week were given the chance to be ball persons for Glebe's First Grade side. Every second week, at home games, a couple of Glebe's under 13s were handed the opportunity to get close to the action. Feedback from the Juniors is that they enjoyed the experience of being part of a Premier League game.

I would like to say thank you for a number of Club members who pitched in this year and made life easy by taking on roles and volunteering for tasks. Trust me, every bit count's, and I am looking forward to lots of help next year for various roles around the Club.

Mack Noller stepped up this year as Men's Club Captain, directing and motivating the troops about where and when to play. Mack did an exceptional job, in his first year in the job during what turned out to be a pretty crazy year. Well-done Mack! Thanks to the coaches and managers of the Men's teams (Craig Martin, Terry Kelly, Mick Bougoukas, Graham Jones, Adam Campano, Harry Wark, Brad Goodridge and Richard McKeogh) who have all done a great job this year in constantly changing circumstances. Thanks also to all other volunteers from the Men's cohort, including Sam Alexander-Prideaux, Joe Clear, Luke Pollock, Aleks Manou, Ross Bougoukas, and Mark Paterson.

Several of the Board members deserve special mention for their tireless energy and channelling Glebe's Juniors into senior hockey. Tara Taylor (Junior's Director) and Shorty Cochrane (Development Director and Junior Academy driver) in particular. You have done amazing things for our Juniors and been fantastic communicators.

Glebe has a highly functional Board who are working hard and efficiently to get things organised behind the scenes. Sue Heath, Glebe's President is an expert at getting teams working together and in the same direction. I feel honoured to be part of such a great team and can't wait for the 2022 season!

### **Adrian McKeown**

Men's Director

## Premier League PL1 – First Grade Report

Team	Played	Wins	Draws	Losses	BYEs	For	Against	Diff.	Points
1. NWS-BH	9	7	0	2	2	43	11	32	21
2. Moorebank Liverpool	9	6	2	1	2	54	7	47	20
3. UNSW	8	5	3	0	2	36	14	22	18
4. Sutherland	9	5	2	2	2	40	14	26	17
5. Manly-GNS	9	5	1	3	2	26	27	-1	16
6. Ryde HH	9	4	1	4	2	29	21	8	13
7. SUHC 1	9	4	0	5	2	21	35	-14	12
8. Glebe	9	3	1	5	2	18	31	-13	10
9. SESHG	9	2	0	7	2	11	50	-39	6
10. Briars	8	1	1	6	2	15	48	-33	4
11. Northern Districts	8	0	1	7	2	13	48	-35	1

2021 was very much a building year for our Men's 1st Grade Squad, not only focussing on results but incorporating a cultural aspect into the framework. With a mix of youth and experienced players we were able to achieve some pleasing results on the field and significant improvement culturally week after week.

Though a shortened season it did provide us with the opportunity to blood new players and introduce new playing structures, which though took some getting used to, showed encouraging signs as the season progressed. What was clearly evident was the gap between the top teams in the competition and us, along with a few other Clubs, who do not have the financial capacity which comes with having access to your own fields to play and train on. The recent announcement of a multi-purpose field for the Club to access provides us with a huge steppingstone for the future and current generations to enhance player skills and also provides the ability to attract new players, both Seniors and Juniors, to the Club.

The focus and planning for the 2022 season is already underway ensuring we maintain the momentum and capitalise on the positives and look to retain the current playing group while putting strategies in place to attract new players to the Glebe District Hockey Club.

I want to thank the players and board for their support and engagement throughout the season. Also, to Terry Kelly for Managing the Team and keeping us inline and Ken Wark Jnr for his dedication and knowledge, week in week out at training.

Yours in Hockey,

**Craig Martin**  
First Grade Coach



1st Grade: Sam Alexander-Prideaux and Aleks (Mouse) Manou



Tim Pritchard



Jake Ribarovski



Cam Jones



Matt Wark



Dom Tintner



Ross Bougoukas



Ben Smith

## PL1 Season Manager's Report for 2021

The 2020 season was a shortened one due to the Pandemic and then in 2021 we were faced with an even bigger threat from Covid-19 than the year before. Although a few mishaps in our game plans during our short season, we were, I feel, starting to pull together a cohesive team. Results notwithstanding.

A new coach and a young team meant that we were on a steep learning curve to acquire the skillset to compete at this level of competition and against some of the top Australian players. If you don't play against the best, you learn nothing. It will take Glebe a couple of seasons to harden their resolve and return to the winning circle. Our boys have the will to do it and if they stay together, they will succeed. We have a journey together over the next few seasons to acquire those skills and competency.

### The Rounds.

Saturday 19 June was the last of the round games as the curtain dropped on our activities the following day. All training was cancelled for the following Tuesday and any hopes of returning to play were dashed within the month. The season was officially called off in early August, with no hope of returning to finish the season. Our last game was against Northern Districts (Rd10) who are coached by our last year's 1<sup>st</sup> grade Coach, Jai Singhota. The game was not exactly as we had hoped, although we won 3-1, it was not the best of our games. Not considering that last game we met in April (Rd3), we beat them 5-2.

It was a watershed time for the team as the previous game against Sydney University (Rd9) was hard fought, considering their position on the ladder just above us and at five minutes to go before the whistle we were leading 1-0. A sterling effort for the boys in that game. It seemed that all the effort being put into training and guidance by our new Coach Craig Martin, was coming to fruition. A win though, was not to be. The tension was high as we came into the last seconds of the match. Then the impossible happened, we were robbed by the tech bench not blowing the hooter at full time and Uni scored 3 seconds after 0 time. It was devastating.



*The intensity can be seen in this photo at the 3<sup>rd</sup> Quarter.*



*Tim Pritchard, Mitchell Brain, Corey Morrow, Dom Tintner*

Round 7 was a strenuous game against Sutherland. Always a tough contest with them. We went down 7-0, with our defence the main issue in that game. Turnovers were 38.7% to Suthos 61.3%. We had 3 field shots to their 22.

Round 6 versus Briars was a disappointment for the team as we felt we had the measure on them from our previous game in Rd 2 which was a 2-2 draw. We were winning until the final round. It was not to be. The round 2 game was intense and marred by an incident where our Captain, Mark Paterson, was struck on the nose by an uplifted stick.

In our matches against North West Strikers (Rd5) and UNSW (Rd4) the stats were much the same. Turnovers in the UNSW game were 57.3% versus 42.7% for Glebe. In the NWS game it was 53% versus 47%. Circle penetration was UNSW 68.9% versus 31.0% for Glebe. For the NWS game 74% NSW V 25.5% for Glebe. Penalty Corners were UNSW 73.3% to Glebe 26.7%. NWS were 62% to 38% Glebe. The end results were NWS defeated Glebe 9-0. UNSW defeated Glebe 4-1.

There is a pattern there for the Team and Coaching panel to address. But I must emphasise, that in my opening remarks, these games are a learning curve for the new first grade team. It is going to be tough for these youngsters, up against some of the best players in the Comp. NWS, Moorebank, UNSW and Sutherland were at the close of play on 19 June, respectively, One, Two, Three Four on the ladder. It's that level of competition we need to set our sights on being competitive.

### **The Team.**

I would like to acknowledge the contribution during the season to the Tuesday work of Mark Paterson and Kenny Wark. Both assisted the team in acquiring those skills in demanding drills and other activities. To the direction given to the team by the Coach Craig Martin, whose level-headed approach and even-handed attitude guided the team during the season.

### **To the Men's of the Team:**

**Mark Paterson** our Skipper who led gallantly and with conviction. Keeps to the team with a great experience in both Grade and for Australia.

**Ross Bougoukas** experience galore. Determination and grit mark his approach to the game.

**Mitchell Brain** one of our new young players who hails from Lithgow and drives down to play and train. Shows great devotion to learn. One of players for the future. All Mitch needs is experience at this level and he will make a great full back.

**Cameron Jones** another of our young players on the steep learning curve. But puts in a great effort during the season.

**Aleks (Mouse) Manou** always a happy chappy. Comes to training and the game with a smile on his face and puts in for the team in the backs. Passed a milestone this season with 100 games in 1st grade.

**Ben Martin** another one of our young guns in the team. Plays a lot of Hockey both for Glebe and his Central Coast team, plus a stint with NSW. Still a lot to learn in this fast-paced competition.

**Corey Morrow** a man with a big heart. Elevated to first grade this season will earn his spot in the team over time. Another person who is learning fast that the chance from 2<sup>nd</sup> grade to first is a big jump. Willing to put the effort into training. He has the will and energy to achieve.

**Mack Noller** another young gun making the move to First grade full time. A steep learning curve for Maca. He will in time gain his feet here, with help from the older hands and keeping his cool under pressure. A very likeable guy.

**Sam Alexander -Prideaux** another one of our young guns coming up the curve. Found it hard at first to make the transition but is putting the time and effort into making it work. He is willing to train until he drops and absorb the knowledge needed to succeed in time.

**Tim Pritchard** what can we say about Timmy. Talent galore. His skills with the ball are only growing and his speed up the channels is a sight to behold. Just wish he'd turn up early for the games.

**Isaac Smith** another young gun that hails from the Central Coast. A great young talent that will improve with time. If he stays with Glebe, he will be a great asset.

**Dom Tintner** simply a stalwart of the Club and the team. Dom works hard for his spot and has this season proved an asset in the backs where I believe his natural talents are on show.

**Ben Smith** our overseas import from New Zealand. A fantastic Goalie with a great lot of experience in goals. His fantastic work in the game against Sutherland where there were 24 field shots on goal, and he made 17 great saves. Without Ben in Goals this season our results may have been disastrous.

**Emerson Weiley** Emerson filled in the Goals when Ben was away for a couple of tough games. Such as the UNSW game. It was a tough day at the office, but he did well, considering.

**Joey Clear** a go to player from 2<sup>nd</sup> grade for a couple of seasons now. He will be a player for the future at Glebe and like other youngsters will only grow into the team.

Also, I would like to thank those 2nd grade players that came up to first grade to fill in. **Victor Dunand, Dylan Howe, Jake Ribarovski, Orlando Travis.** A great effort under pressure from those boys.

I look forward to next season.

**Terry Kelly**  
Manager

## Premier League PL2 – Second Grade Report

Team	Played	Wins	Draws	Losses	BYEs	For	Against	Diff.	Points
1. Ryde HH	9	7	0	2	2	52	10	42	21
2. Moorebank Liverpool	9	6	1	2	2	47	14	33	19
3. Sutherland	9	6	1	2	2	28	14	14	19
4. UNSW	8	5	0	3	2	25	17	8	15
5. NWS-BH	9	5	0	4	2	22	14	8	15
6. Briars	8	4	0	4	2	15	26	-11	12
7. SESH C	9	3	1	5	2	14	30	-16	10
8. Northern Districts	8	2	3	3	2	17	22	-5	9
9. SUHC 2	9	2	2	5	2	19	33	-14	8
10. Glebe	9	2	2	5	2	15	30	-15	8
11. Manly-GNS	9	0	2	7	2	6	50	-44	2

The season started with a mixed bag of results - a win, a loss and a draw over the first three rounds but showed a lot of promise. That loss was a close fought battle against Briars, who beat us in both rounds, but we were as good as them across the field. In both games we just had 1 poor quarter that meant we had to chase goals to stay in touch.

This was the story of our season. I rated each quarter and although we generally matched it with teams in the first quarter, we were beaten in the second quarter in 7 of the 9 games. This was devastating, with the team then feeling like they needed to play 'catch up' hockey. We did regularly play better in Quarters 3 and 4 but the damage was done. In the end we won 2, drew 2 and lost 5. We had 15 goals for and 30 goals against, but this could have been worse if not for Emmerson setting the goal keeping bar high, making some miraculous saves, directing the backs with confidence, and then polling regularly in the Players' Player votes.

It was great watching Orlando match it with the players in second grade and getting a call up to first grade on numerous occasions. It's important to turn the trickle of Glebe Juniors making it into the top grades into a flood. Orlando also polled well in Players' Player votes along with Dylan, Jake, Roddo and Josh. Across the field there was no doubting the effort from everyone in second grade this year. At each break they all listened intently to Mick's analysis and there was a lot of positive talk which is what Glebe players do.

Over 9 games we fielded 26 players, and all played with the intent needed in second grade. Thanks to all the players that came from the lower grades and played with us, either in the starting line up or backing up after a previous game. Special thanks to Zane Goodridge and Will Brine, Junior players that have stepped up to help out this year, with this experience in the higher grades guaranteed to

improve their game. In addition, many of our second graders backed up to play in firsts and help contribute to their competitiveness across the short season.

The comradery in the second-grade team was great, making coaching and managing them a breeze. Thanks to Mick and the team for managing the manager, it was all very new for me. This included me filling in Game Cards a minute or so before the game and leading me to make good friends with many of the match officials. All in all, another season that could have been. Let's hope Glebe can continue to build on the previous years, field strong teams, be competitive and still play with enjoyment. And... hope there is a full season in 2022.

**Graham Jones**

Second Grade Manager



*Emerson Weiley – goalie*



*Corey Morrow and Rodrigo Pedraza-Luna – 2nd Grade players' players*



*2nd Grade debut: Orlando Travis, Dylan Howe, Matt Wilson*



*Andrew Rice, Al Cullen, Jake Ribarovski*

## Premier League PL3 – Third Grade Report

Team	Played	Wins	Draws	Losses	BYEs	For	Against	Diff.	Points
1. Ryde HH	9	7	1	1	2	41	10	31	22
2. SUHC 3	9	7	0	2	2	25	14	11	21
3. Macquarie Uni	9	6	1	2	2	45	10	35	19
4. UNSW	8	6	0	2	2	33	10	23	18
5. Sutherland	9	3	3	3	2	27	25	2	12
6. Moorebank Liverpool	9	4	0	5	2	16	15	1	12
7. Glebe	9	3	1	5	2	33	37	-4	10
8. SESH C	9	3	0	6	2	13	38	-25	9
9. Manly-GNS	9	2	1	6	2	9	41	-32	7
10. Northern Districts	8	2	0	6	2	8	30	-22	6
11. Briars	8	0	3	5	2	12	32	-20	3

The Men's 3<sup>rd</sup> grade team for the COVID-19 affected and suspended 2021 season was as follows:

*Adam Campano (Coach), Michael Wark (Captain), Anthony Wark, Patrick Wark, Simon Wark, Paul Jowett, Jacob Warnock, Alister Cullen, Andrew Cheong, Luke Pollock, Craig Martin, James Martin, Daniel Martin, Zane Goodridge, Will Brine, Sam Bagley, Chris Farrugia and Tyeson Hickey.*

- Highest goal scorer: Michael Wark – 15 goals from 6 games
- Players' Player Award: Andrew Cheong



*Al Cullen, Andrew Cheong, Tony Wark*

Team spirit was high heading into the 2021 season after coming so close in the 2020 season in making the Grand-Final but getting beaten by the better (and fitter) team on the day.

Looking at the team list, it's almost a 'Who's Who?' of champion Glebe Men's players, some of whom were part of the last Glebe 1<sup>st</sup> grade side to win the PL1 premiership back in 2008.

However, it was another thing all together getting even a fraction of these players on the field at the same time. When they all played together, which happened only twice, we had huge wins, 8-2 vs Briars and 9-1 vs Northern Districts. In between these wins, we had a tough period of 6 consecutive losses, on a number of occasions we were reduced to 9 or 10 players due to either lack of substitutes or to players receiving cards for various infringements on the field.

Despite this, however, the general spirit was good in the squad and much more positive and supportive than the past couple of years. The senior players made a concerted attempt to act as role models towards the younger and less experienced players in the team and for the most part, they achieved this. Certainly, the younger players got plenty of advice from the senior players, and I commend the senior guys for stepping up to the plate in this respect.

The addition of Junior players, Will Brine and Zane Goodridge, and the permanent addition of Tyeson Hickey to the team, added some much-needed youthful exuberance to the team and they all improved rapidly during the course of the shortened season.

Craig Martin, 1<sup>st</sup> grade coach and emergency reserve, helped implement a new playing system towards the back end of the season, which resulted in much improved results and better suited the skills and abilities of our players. For example, while we lost 2-4 to Sydney University in the penultimate game of the season, we troubled this talented side greatly and were unlucky to come away with the loss, noting that Sydney Uni was leading the competition at the time when it was halted.

The second half of the season appeared promising given we were only 2 points out of the Top 6 and that the next two teams in front of us were only a win away from us catching them on the points table. Our run home in the draw looked very favourable to our chances of making the finals, where truly anything could have happened - but it was not to be.

Just to show that there are never too many Wark's in a team (or are there?), life member and Club legend, Harry Wark Jnr, volunteered his services to the team and was a great assistance in acting as Team Manager on game day, including completion of necessary admin duties.

We scored some great goals during the season, and it was inspirational to see Mick Wark bag three 'hatties' in the few games that he played. Shades of the glory days!

Congrats to Andrew Cheong who continued his wholehearted form from the previous season to be awarded the 3<sup>rd</sup> grade Player's Player for 2021 as voted by his teammates. Cheong truly has a 'Lion heart' and gives 100% every time he steps on the field.

I am sincerely excited and looking forward to the 2022 season, and to be honest, have been doing so since well before the 2021 season had been officially canned.

**Adam Campano**

3rd Grade Coach and Player

## Sydney League SL3 – Fourth Grade Report

Team	Played	Wins	Draws	Losses	BYEs	For	Against	Diff.	Points
1. Moorebank Liverpool	11	11	0	0	0	71	12	59	33
2. Glebe	11	7	1	3	0	41	19	22	22
3. Ryde HH	11	7	1	3	0	43	25	18	22
4. UNSW	11	5	5	1	0	49	21	28	20
5. St George/Rand	11	6	2	3	0	35	21	14	20
6. Briars	11	5	1	5	0	43	36	7	16
7. Manly-GNS	11	3	1	7	0	21	41	-20	10
8. Bankstown	11	2	1	8	0	21	71	-50	7
9. Sutherland	11	2	0	9	0	16	40	-24	6
10. UTS	11	1	0	10	0	9	63	-54	3

Once again, we had another year where a mix of youth and experience came together. The experience coming from the core of last year's team, youthfully injected by a few new players! With this combo, it wasn't long before the team found their feet.

### 4<sup>th</sup> grade players this year

*Tyson Hickey, Cameron Wells, Jamie Travis, Clark Foster, Paul Diaper, Peter Busch, Ivan Gorrige, Tom Alexander Prideaux, Aiden Najdzion, Mark Short, Aaron Gough, Will Brine, Brad Goodridge, Matt West, Zac McPherson, Craig Martin, Jackson Howe, Sam Bagley, Adrian McKeown*

At the end of the first round, we had managed to climb up into second spot and put away 41 goals and only concede 19. Our newest senior goalkeeper Clark Foster, who is only 15, stepped up to Seniors and saved our bacon many times throughout the first round.

Clark, Aidan, Will and Tom were all stepping into their first season of Men's hockey. Although their extensive Junio Rep experience held them in good stead for the challenges to come. Along for the ride we managed to secure support from Peter Bush, Mark Short, and Jamie Travis, all old hands at battling out a Men's season, and negotiating its highs and lows.



Aiden Najdzion



Clark Foster



Cam Wells, Paul Diaper, Clark Foster



Brad Goodridge (coach), Tom Alexander-Prideaux, Clark Foster

**Highest Goal Scorers**

At the season halfway point the experience in the forward line was leading the goal scoring tally with Jamie, Tyson, myself, and Ivan mostly managing to get the job done. Tom in his first year was chasing us down and if he was given the chance in the second half of the season, I'm sure he would have been hot on our heels.



How many goals did you get? Ivan Gorridge, Jamie Travis and Cam Wells

Player Name	Goals
-------------	-------

Tyson Hickey	9
Jamie Travis	9
Brad Goodridge	7
Ivan Gorrige	7
Tom Alexander Prideaux	4
Mark Short	3
Will Brine	1
Aaron Gough	1

### Players player

The players player at the half point of the season had been led by Tyson Hickey who had started to consistently create and take his chances in front of goals. Notable Mention goes to Cam Wells, who was new to the Club, and missed a couple of games but still rose to the top. Once again, a couple of the younger guys were showing the goods with Clark, Tom and Aidan not far off the pace.

Players Player	Points
Tyson Hickey	108
Cameron Wells	84
Jamie Travis	81
Clark Foster	80
Paul Diaper	70
Peter Busch	55
Ivan Gorrige	43
Tom Alexander Prideaux	41
Aiden Najdzion	37



*Always ready for a great photo: Cam Wells, Tyson Hickey and Jamie Travis*

Being a player coach is not easy and can't be done with help of others. Thanks to Ian Foster, for his manager skills; Jaime Travis, Peter Bush and Mark Short for their advice, tactics and Mentoring of the younger guys coming through; along with all the other older players who looked after and encouraged the younger guys. It was also a pleasure to play with whole team and some of the kids I have coached in Juniors, who I'm sure will progress to become great Club members and progress to the higher grades.

**Brad Goodridge**

4th Grade Coach and Player

## Sydney League SL4 – Fifth Grade Report

Team	Played	Wins	Draws	Losses	BYEs	For	Against	Diff.	Points
1. Ryde HH	11	9	2	0	0	46	11	35	29
2. NWS-BH	11	9	0	2	0	29	10	19	27
3. Easts	11	7	2	2	0	31	15	16	23
4. Bentstix	11	6	2	3	0	22	10	12	20
5. UNSW	11	6	1	4	0	35	23	12	19
6. Briars	11	6	0	5	0	23	21	2	18
7. Monterey	11	4	0	7	0	18	25	-7	12
8. Glebe	11	3	1	7	0	21	30	-9	10
9. Bankstown	11	1	0	10	0	14	48	-34	3
10. Sutherland	11	0	0	11	0	7	53	-46	0

2021 was a short but sweet season for the Fightin' Fiftths. A lot of the old faces (with a few new ones and resurrected souls thrown in) returned for a year of peak fitness, sharp skills, tall tales and friendly banter.

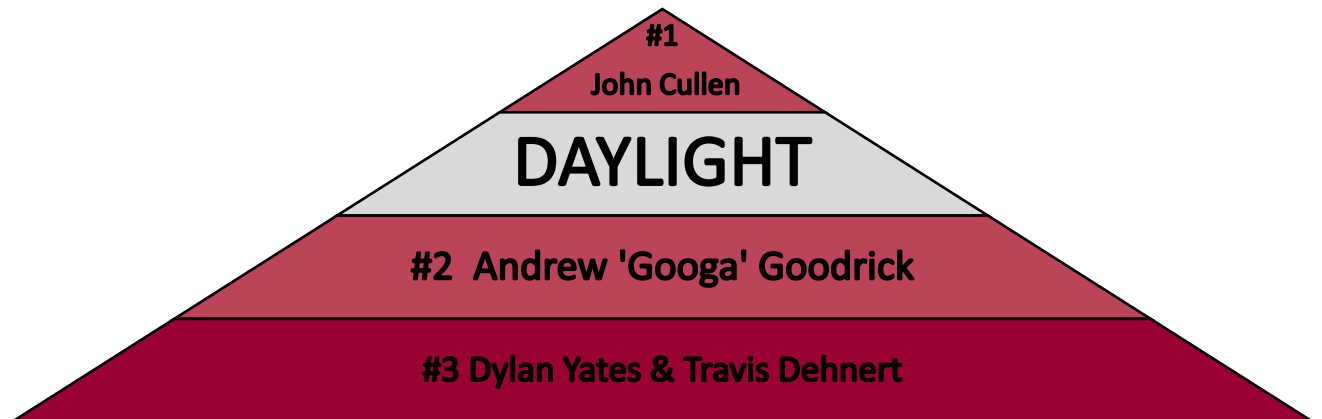
We had three wins, one draw and seven losses to finish in the second top four on the ladder (also known as eighth in a field of ten teams). Most of our losses came down to narrow margins. Plenty of shots on goal but needing greater luck or accuracy to capitalise on our sheer skill and fitness (as aforementioned). I may be biased but the only real opposition we faced this year was Ryde, otherwise the matches were fairly close.

Our biggest wins were against Sutherland (5 – 1) and Bankstown (7-3). Michael Monforte hit his straps in the Sutherland game, coming away with four very deft goals. He was on song that day and it's good to see he did something in at least one game this year! Michael finished with six goals for the season and was our second-highest goal scorer.

Some people only need to go through life with one name; athletes like Ronaldo, singers like Madonna and supermodels like Giselle (to literally name a few). We have SCOTT. Our own 'International Man of Mystery' scored four goals in our win against Bankstown. Only having played four games this season due to his international magical mystery tours, SCOTT still managed to finish as the third-best goal scorer for our team, with five goals. That's an average of five goals for one season if we only consider one season. Statistics are important!

Some people say he is more athletic than Usain Bolt, sharper than Forrest Gump and more talented than Susan Boyle. We call him the Stig...wait, hold on...we call him Travis! Yes, Travis was our leading goal scorer for the season with a grand total of seven goals.

As stated earlier, statistics are important, but pictographs are important. So, here's one to illustrate our final results for Players' Player:



2020 and 2021 has been a period for all things 'unprecedented' when it comes to COVID but here are some more unprecedented milestones for 2021:

- Tim Sutton had never played 500 games before he played 500 games
- John Cullen had never reached 300 games before 2021 but he did finish 2020 with 299 games,
- Adrian McKeown...you guessed it...had never played 300 before this year but he had previously played 200, and
- It's not exactly unprecedented because it's said that man has come back from the dead in the past, but in 2021 Kevin Chivers did his best to resurrect his playing career by taking to the field for the Fightin' Fifths!

It was a short season but a fun one. If anything, it's made us all hungrier for more hockey in 2022. That's the Power of Hockey.

### Richard McKeough

5th Grade Manager and Player



*John Cullen, Dylan Yates, Tim Sutton, Andrew Goodrick*



*Adrian McKeown, Michael Monforte, Travis Dehnert*

## Men's Games Played – 2021

First Name	Last Name	Total Games 2021
Les	WARK	816
Harry A	WARK	757
Stephen	CASEY	720
George	MANOU	715
Martin	HOWE	712
Peter	BUSCH	664
Colin	BROWN	660
Danny	OBRIEN	644
Harry J	WARK	643
Peter	HOWE	641
Victor	WESTACOTT	623
Vernon	HOWE	620
Colin	ROCHESTER	577
Adam	CAMPANO	571
Bill	STUBBS	561
Paul	ROGERS	557
Peter	MITCHELL	555
Andrew	GOODRICK	549
Robert	WARK	542
Gary	WARK	536
Michael	BOUGOUKAS	535
Tim	SUTTON	505
Alex	MCPHEE	503
Ken	WARK SNR	492
Brad	GOODRIDGE	470
Pat	NILAN	454
Ken	WARK JNR	444
Charlie	BROWN	426
Aaron	NILAN	426
Craig	MARTIN	418
Aaron	OMAN	387
Patrick	WARK	387
Josh	LA SPINA	383
John	MCDONALD	383
Anthony	WARK	370
Fred	LETTS	350
Mark	SHORT	350
Andrew	CHEONG	349
Terry	KELLY	343
Adam	HOWARD	342
Graeme	GILMOUR	335

First Name	Last Name	Total Games 2021
Sam	BAGLEY	327
Robert	TAYLOR	324
Ian	PATERSON	312
Jason	MCDONALD	311
John	CULLEN	309
Adrian	MCKEOWN	309
Alister	CULLEN	308
Mark	PATERSON	308
Aleks	MANOU	305
Michael	WARK	291
Simon	WARK	289
Matthew	WARK	287
Ross	BOUGOUKAS	286
Paul	JOWETT	277
Kevin	CHIVERS	276
Zachary	FARLOW	271
William	NOLLER	267
Dominic	TINTNER	265
Christopher	FARRUGIA	261
Jake	RIBAROVSKI	252
Sam	CHRYCOS	242
Paul	DIAPER	242
Richard	MCKEOUGH	238
Dominic	KAVANAGH	231
Geoff	PATERSON	229
Dylan	HOWE	222
Alex	SHEARD	219
Grant	MARTIN	197
Victor	DUNAND	193
Damien	GALLUZZO	192
Alasdair	BROWN	191
Corey	MORROW	189
Mackenzie	NOLLER	168
Ivan	GORRIDGE	160
Edward	NOLLER	148
Jamie	TRAVIS	145
Jackson	TUDOR	137
Scott	GLADING	134
James	MARTIN	120
Rodrigo	PEDRAZA-LUNA	113
Sam	ALEXANDER-PRIDEAUX	106
Emmerson	WEILEY	94
David	REID	91
Tim	PRITCHARD	85

First Name	Last Name	Total Games 2021
Jackson	HOWE	82
Luke	POLLOCK	80
Ben	MARTIN	79
Jacob	WARNOCK	79
Daniel	MARTIN	78
Travis	DENHERT	74
Matthew	WEST	72
Cameron	JONES	54
Peter	RUTLEDGE	47
Joe	CLEAR	46
Suresh	RAJA	45
Andrew	RICE	39
Dylan	YATES	37
Darren	FRENCH	35
Orlando	TRAVIS	31
Zac	JAENSCH	30
Tyson	HICKEY	29
Zane	GOODRIDGE	23
Michael	MONFORTE	20
Zac	MACPHERSON	19
Ben	SMITH	15
Akilan	THIRUMAVALAVAN	15
Mehdi	RIZVIZ	14
Mitchell	BRAIN	12
David	MILBURN	12
William	BRINE	12
Clark	FOSTER	11
Matthew	WILSON	10
Paul	COLLIER	8
Aiden	NAJDZION	8
Tom	ALEXANDER-PRIDEAUX	7
Isaac	SMITH	7
Cameron	WELLS	7
Kaylin	DAJI	6
Zachary	DOMROW	6
Mark	NAYLOR	6
Aaron	GOUGH	5

## Club Trophies

The 2021 season was another interrupted season due to the COVID-19 pandemic. After playing only the first half of the season, New South Wales was sent into lockdown and all community sports were no longer permitted.

This set in motion what was to be the end of the 2021 season and the Board made the difficult but practical decision to forgo this seasons awards. The season was not yet properly off the ground and many teams were still finding their stride. Furthermore, the Board believe that after many months of no play and a season that did not result in any form of finals it would be unjust to ask coaches and players to fairly assess the season and player performance.

In addition, the lockdown restrictions also meant that we were unable to gather as a Club to celebrate and present the awards to players in recognition of their achievements.

For further information on the prior recipients of the Club trophies, please refer to the 2020 Annual Report. We sincerely hope that the 2022 season goes ahead with no interruptions and that we are able to see a full season through to the finals and trophies.

## Club Honours 2021 – Women's

### Player's Player

First Grade Players' Player 2021	Kat Hughes
Second Grade Players' Player 2021	Jessica Higgs
Third Grade Players' Player 2021	Amy Whalley
Fourth Grade Players' Player 2021	Jade Fox
Fifth Grade Players' Player 2021	Michelle Hancock
Sixth Grade Players' Player 2021	Gabe Wilkinson

### Club Games

#### 150 Club Games

Michelle Hancock  
Sian Morgan

#### 100 Club Games

Aishling Klimoski  
Olivia Edwards  
Erin Machin-Hunt

### Highest Goal Scorer

Linda Tait Trophy for the Highest Goal Scorer 2021:  
Gabrielle Wilkinson and Jessica Weatherall

## Club Honours 2021 – Men's

### Player's Player

First Grade Players' Player 2021	Dominic Tinter
Second Grade Players' Player 2021	Emmerson Weiley
Third Grade Players' Player 2021	Andrew Cheong
Fourth Grade Players' Player 2021	Tyson Hickey
Fifth Grade Players' Player 2021	John Cullen

### Club Games

#### 500 Club Games

Tim Sutton

#### 300 Club Games

John Cullen  
Adrian McKeown

#### 100 Club Games

Sam Alexander-Prideaux

#### 200 1<sup>st</sup> grade games

Aleks Manou

#### 150 1<sup>st</sup> grade games

Dom Tintner

### Highest Goal Scorer

Geoff Paterson Trophy for the Highest Goal Scorer 2021: Michael Wark

## Roll of Honour – Women

Year	President	Honorary Secretary	Honorary Treasurer	Club Captain
1934	Jack Dwyer	Denis Donovan		
1935	Jack Dwyer	Denis Donovan		
1978	Molly Wark	Molly Wark	Jan Hammond	
1979	Molly Wark	Molly Wark	Jan Hammond	
1980	Molly Wark	Molly Wark	Jan Hammond	
1981	Molly Wark	Molly Wark	Jan Hammond	
1982	Molly Wark	Molly Wark	Jan Hammond	
1983	Molly Wark	Molly Wark	Jan Hammond	
1984	Molly Wark	Molly Wark	Jan Hammond	
1985	Molly Wark	Molly Wark	Jan Hammond	
1986	Molly Wark	Judy Dean	Jan Hammond	
1987	Molly Wark	Judy Dean	Jan Hammond	Ann Rochester
1988	Molly Wark	Jill Strachan	Jan Hammond	Lisa Williams
1989	Janice Farquharson	Jill Strachan	Pauline Sunderland	Jenny Evans
1990	Janice Farquharson	Roberta Inns	Pauline Sunderland	Elaine Trodden

Year	Convenor	Women's Secretary	Women's Treasurer	Club Captain
1991	Ann Rochester	Linda Glassock	Jeanette Brazel	Jane Goldsmith
1992	Elaine Trodden	Jane Goldsmith	Ann Rochester	Michelle Opitz
1993	Ann Rochester	Jane Goldsmith	Fiona McVicar	Michelle Minett
1994	Ann Rochester	Jane Goldsmith	Elaine Trodden	Michelle Minett
1995	Ann Rochester	Cathy Busch	Ann Rochester	Michelle Minett
1996	Carole Wark	Ann Rochester	Christine McNicol	Margaret Howe
1997	Carole Wark	Carmen Byrne	Christine McNicol	Margaret Howe
1998	Carmen Byrne	Mary Wark	Neale Lawson	Margaret Howe
1999	Carmen Byrne	Mary Wark	Neale Lawson	Margaret Howe
2000	Carmen Byrne	Mary Wark	Neale Lawson	Margaret Howe
2001	Carmen Byrne	Mary Wark	Neale Lawson	Lisa Usher
2002	Mary Wark	Rachael Wilkinson	Neale Lawson	Lisa Usher
2003	Moira Williams	Gabrielle Wark	Neale Lawson	Rachael Wilkinson
2004	Moira Williams	Gabrielle Wark	Vacant	Helen Howe
2005	Moira Williams	Gabrielle Wark	Ellie Williams	Helen Howe
2006	Amy Wark	Gabrielle Wark	Kylie Lawson	Helen Howe
2007	Amy Wark	Helen Howe	Kate Pearsall	Raelene Lindenberg
2008	Mary Wark	Helen Howe	Kate Pearsall	Raelene Lindenberg
2009	Helen Howe	Kate Gleeson	Kate Pearsall	Raelene Lindenberg
2010	Helen Howe	Kate Gleeson	Kate Pearsall	Angela Phillips
2011	Helen Howe	Louise Tapsell	Alex Glading	Angela Phillips
2012	Louise Tapsell	Leonie Smallwood	Alex Glading	Angela Phillips
2013	Louise Tapsell	Louise Tapsell	Alex Glading	Angela Wark

<b>Year</b>	<b>Convenor</b>	<b>Women's Secretary</b>	<b>Women's Treasurer</b>	<b>Club Captain</b>
2014	Louise Tapsell	Louise Tapsell	Prue Brady	Angela Wark
2015	Melissa Newton	Emma Brady	Prue Brady	Angela Wark
2016	Melissa Newton	Carole Wark	Prue Brady	Angela Wark
2017	Kate Alexander	Laura Schmahmann	None appointed	Lynsey Askew

## Roll of Honour – Men

Year	President	Honorary Secretary	Honorary Treasurer	Club Captain
1933	Edward Mockler	George Mockler	John William Taylor	
1934	Edward Mockler	George Mockler	John William Taylor	
1935	Edward Mockler	John William Taylor	Robert Henry Dunn	
1936	Edward Mockler	John William Taylor	John Logan Quinlan	
1937	Edward Mockler	John William Taylor	John Logan Quinlan	
1938	Charlie Humphries	John William Taylor	John Logan Quinlan	
1939	Charlie Humphries	Clarrie Eling	John Logan Quinlan	
1940	Charlie Humphries	Jack Worley	John Logan Quinlan	
1941	Charlie Humphries	Jack Worley	John Logan Quinlan	
1942	Charlie Humphries	John William Taylor	Leslie Waight	
1943	Charlie Humphries	William Ryan	John Logan Quinlan	
1944	Charlie Humphries	William Ryan	John Logan Quinlan	
1945	Charlie Humphries	William Ryan	John Logan Quinlan	
1946	Jack Worley	John William Taylor	Harry Butler	
1947		Jack Worley	Max Steedman	Harry Butler
1948	Jack Worley	Paul Rodgers	Harry Butler	William Ryan
1949	Jack Worley	Paul Rodgers	Fred Needham	William Ryan
1950	Jack Worley	Fred Needham	Noel Walker	Frank Murray
1951	Jack Worley	Fred Needham	Noel Walker	Frank Murray
1952	Jack Worley	Fred Needham	Noel Walker	Frank Murray
1953	Jack Worley	Fred Needham	Noel Walker	Frank Murray
1954	Jack Worley	William Francis Ryan	Noel Walker	Harry A Wark
1955	Jack Worley	Ray Thorpe	Alick Robb	Harry A Wark
1956	Jack Worley	Ray Thorpe	Harry Butler	Harry A Wark
1957	Jack Worley	Ray Thorpe	Jack McParland	Harry A War
1958	Noel Walker	Ray Thorpe	George Collett	Greg Harris
1959	Noel Walker	Ray Thorpe	Greg Harris	Victor Westacott
1960	Noel Walker	Ray Thorpe	Bill Stubbs	Victor Westacott
1961	Noel Walker	Ray Thorpe	Bill Stubbs	Harry A Wark
1962	Kelvin Dickey	Ray Thorpe	J Thomson/W Stubbs	Pat Nilan
1963	Kelvin Dickey	Ray Thorpe/Fred Letts	Arthur Stubbs	Pat Nilan
1964	Kelvin Dickey	Fred Letts	Brian Howe	Pat Nilan
1965	Kelvin Dickey	Frank Vanderputt	Brian Howe	Pat Nilan
1966	Greg Harris	Frank Vanderputt	Fred Letts	Pat Nilan
1967	Bill Stubbs	Fred Letts	Frank Whiteman	Robert Brown
1968	Bill Stubbs	Fred Letts	Lindsay Weate	Robert Brown
1969	Bill Stubbs	Fred Letts	Ken Wark	Robert Brown
1970	Bill Stubbs	Fred Letts	Ken Wark	Robert Brown
1971	Bill Stubbs	Fred Letts	Frank Whiteman	Pat Nilan
1972	Pat Nilan	Fred Letts	Frank Whiteman	Martin Howe

Year	President	Honorary Secretary	Honorary Treasurer	Club Captain
1973	Pat Nilan	Fred Letts	Keith Kipp	Robert Brown
1974	Pat Nilan	Fred Letts	Keith Kipp	Robert Brown
1975	Pat Nilan	Fred Letts	Keith Kipp	Robert Brown
1976	Pat Nilan	Fred Letts	Ken Wark	Ian Mutton
1977	Pat Nilan	Fred Letts	Ken Wark	Robert Brown
1978	Robert Brown	Gary Manou	Keith Kipp	Ian Mutton
1979	Fred Letts	Bruce Pink	Con Savva	Ian Mutton
1980	Fred Letts	Bruce Pink	Greg Corben	Ian Mutton
1981	Graeme Gilmore	Bruce Pink	Robert Wark	Les Wark
1982	Graeme Gilmore	Danny O'Brien	Robert Wark	Les Wark
1983	Graeme Gilmour	Danny O'Brien	Keith Kipp	Les Wark
1984	Graeme Gilmour	Keith Paterson	Neville Gullickson	Kevin Sweeney
1985	Peter Howe	Keith Paterson	Neville Gullickson/Ian Treharne	Danny O'Brien
1986	Danny O'Brien	Keith Paterson	Peter Howe	Colin Rochester
1987	Robert Wark	Ian Treharne	Peter Howe	Kevin Sweeney
1988	Robert Wark	Danny O'Brien	Peter Howe	Peter Busch
1989	Robert Wark	Gary Wark	Ian Treharne	Peter Busch
1990	Robert Wark	Danny O'Brien	Ian Treharne	Peter Busch
1991	Robert Wark	Danny O'Brien	Ian Treharne	David Rochester
1992	Geoff Paterson	Keith Corkery	Bob Taylor	Peter Busch
1993	Geoff Paterson	Keith Corkery	Bob Taylor	Peter Busch
1994	Geoff Paterson	Keith Corkery	Bob Taylor	Peter Busch
1995	Geoff Paterson	Keith Corkery/Les Wark	Glenn Dunn	Craig Stubbs
1996	Geoff Paterson	Les Wark	Bob Taylor	Kevin Chivers/Amrat Parbhu
1997	Geoff Paterson	Les Wark	Bob Taylor	Kevin Chivers/Amrat Parbhu
1998	Bob Taylor	Eddie Crook	Glenn Dunn	Kevin Chivers/Amrat Parbhu
1999	Bob Taylor	Eddie Crook	Glenn Dunn	Shane Nilan/Amrat Parbhu
2000	Bob Taylor	Eddie Crook	Glenn Dunn	Danny O'Brien/Amrat Parbhu
2001	Bob Taylor	Eddie Crook	L Howard	Danny O'Brien/Amrat Parbhu
2002	Bob Taylor	Les Wark	Mike Newton	James Wright/Mick Bougoukas
2003	Bob Taylor	Les Wark	Mike Newton	Aaron Oman/Mick Bougoukas
2004	Bob Taylor	Les Wark	Mike Newton	Aaron Oman/Mick Bougoukas

Year	President	Honorary Secretary	Honorary Treasurer	Club Captain
2005	Bob Taylor	Les Wark	Mike Newton	Aaron Oman/Graeme Brown
2006	Bob Taylor	Les Wark	Mike Newton	Danny O'Brien/Graeme Brown
2007	Bob Taylor	Les Wark	Tim Sutton	Danny O'Brien/Graeme Brown
2008	Bob Taylor	Les Wark	Tim Sutton	Danny O'Brien/ <i>Not Filled</i>
2009	Bob Taylor	Danny O'Brien	Tim Sutton	Adam Campano/ <i>Not Filled</i>
2010	Bob Taylor	Danny O'Brien	Tim Sutton	Adam Campano/Adrian McKeown
2011	Bob Taylor	Danny O'Brien	Tim Sutton	Adam Campano/Adrian McKeown
2012	Bob Taylor	Danny O'Brien	Tim Sutton	Adam Campano/Adrian McKeown
2013	Danny O'Brien	Mark Paterson	Tim Sutton	Adam Campano/Adrian McKeown
2014	Danny O'Brien	Mark Paterson	Tim Sutton	Ian Paterson/Adrian McKeown
2015	Danny O'Brien	Mark Paterson	Josh La Spina	Ian Paterson/Adrian McKeown
2016	Danny O'Brien	Mark Paterson	Josh La Spina	<i>Not Filled/Not Filled</i>
2017	Les Wark	Mark Paterson	Josh La Spina	Alister Cullen/Adrian McKeown

## Roll of Honour – Board

At the AGM at the end of the 2017 season and after a year of consultation, the members of the GDHC voted to accept a new Constitution which altered the Club's structure from a Management Committee to a Board format. This change brought the GDHC into line organisationally with most other hockey bodies in the country and positioned the Club for its future. Those charged with the responsibility of administering the Club continue to do so with the same commitment and passion as those on whose shoulders they stand: a champion Club, a Club of champions.

Role	2018	2019	2020	2021
<b>President</b>	Les Wark	Les Wark	Craig Martin	Sue Heath
<b>Finance</b>	Joshua La Spina	Joshua La Spina	Joshua La Spina	Joshua La Spina
<b>Development</b>	Clare Prideaux	Clare Prideaux	Katrina Cochrane	Katrina Cochrane
<b>Juniors</b>	Sue Heath	Sue Heath	Sue Heath	Tara Taylor
<b>Women's</b>	Kate Alexander	Kate Alexander	Kate Alexander	Kate Alexander
<b>Men's</b>	George Manou	George Manou	Adrian McKeown	Adrian McKeown
<b>Administration</b>	Carole Wark	Carole Wark	Graham Jones	Kat Hughes
<b>Sponsorship</b>			Aaron Oman	
<b>Communications</b>				Rosa Smith
<b>Club Captains</b>	Alistar Cullen Cecile Crobach Adrian McKeown	Adrian McKeown Kat Hughes Olivia Edwards Ross Bougoukas	Ross Bougoukas Olivia Edwards Tessa Bruin	Mack Noller Olivia Edwards Alisha Middleton

## GDHC Premiership Wins

Year	Club	Grade
1931	Men's	Third
1932	Men's	Second
1933	Men's	Third
1934	Men's	Second
1935	Men's	Second
1936	-	-
1937	-	-
1938	-	-
1939	-	-
1940	Men's	First, Second
1941	Men's	First, Second
1942	Men's	First
1943	Men's	First
1944	-	-
1945	Men's	First
1946	Men's	Third, Fourth
1947	Men's	First, Second, Fourth
1948	Men's	First, Second, Third, Fourth
1949	Men's	First, Second, Third
1950	Men's	First, Second
1951	Men's	First, Second
1952	Men's	First
1953	Men's	First, Second
1954	Men's	Fourth
1955	Men's	First
1956	Men's	First
	Juniors	U14
1957	Men's	Third
	Juniors	U14
1958	Men's	First, Third, Fourth
	Juniors	U16
1959	Juniors	U16
1960	Men's	Second
1961	-	-
1962	Men's	First, Third
1963	Men's	First
1964	Men's	First, Second
1965	Men's	First, Second
1966	Men's	Second, Third, Fourth
1967	Men's	Second, Third
	Juniors	U10, U12
1968	Men's	Second, Third
	Juniors	U10
1969	Juniors	U10, U12, U14
1970	Men's	Fourth

Year	Club	Grade
	Juniors	U10
1971	Juniors	U12, U14
1972	Men's	Second, Third, Fifth
	Juniors	U10
1973	Men's	Second, Fourth
	Juniors	U16
1974	Men's	First, Second, Third, Fourth
	Juniors	U12, U16
1975	Men's	Third, Fourth
	Juniors	U16
1976	Men's	First, Second, Third
	Juniors	U10, U14
1977	Men's	First, Fourth, Sixth
	Juniors	U12
1978	Men's	Third, Fourth, Fifth, Sixth
	Juniors	U10, U12, U16
1979	Juniors	U14
1980	Men's	Seventh
	Juniors	U12, U14
1981	Men's	Second, Fourth, Fifth
	Juniors	U14
1982	Men's	First, Third
	Juniors	U14, U17
1983	Men's	Seventh
	Juniors	U15, U17
1984	Women's	Fourth
	Juniors	U15
1985	Men's	Third, Fourth
	Juniors	U17
1986	Men's	Second
1987	Men's	Fourth, Seventh
	Women's	C Grade
	Juniors	U13, U15
1988	Men's	Fourth
	Women's	C Grade
	Juniors	U17
1989	Men's	Fourth, Fifth, Sixth
1990	Men's	Third, Fifth
	Women's	Third
	Juniors	U17
1991	-	-
1992	Women's	Second, Third
1993	-	-
1994	Men's	First, Fourth
	Juniors	U11A, U11B, U17B
1995	Men's	First, Fourth
	Juniors	U11A, U15A

Year	Club	Grade
1996	Men's	Third
	Juniors	U15A, U15B, U17
1997	Men's	First, Third, Fourth, Fifth, Sixth
	Juniors	U11A, U17A
1998	Women's	Fifth, Sixth
	Juniors	U11A, U15B
1999	Women's	First, Third, Fifth
	Juniors	U11A, U13A, U17A
2000	Women's	Second, Fifth
	Juniors	U13A, U15A
2001	Women's	Second
	Juniors	U11A, U11B, U13B, U15A
2002	Women's	Fourth
	Juniors	U15A
2003	Men's	Second
	Women's	Second
	Juniors	U17A
2004	Men's	Third, Fourth
	Women's	Third
	Juniors	U13B, U17A
2005	Men's	First, Third, Fourth, Sixth
	Juniors	U15B, U17A
2006	Men's	First, Sixth, Veterans (Div 2)
	Juniors	U15A
2007	Juniors	U15A, U17A
2008	Men's	First
	Juniors	U11A, U17A
2009	Men's	Veterans (Div 2)
2010	Men's	Veterans (Div 2), Sixth
	Juniors	U17B
2011	Men's	Third, Sixth
	Women's	Fourth
	Juniors	U11A
2012	Men's	Second
	Women's	Second, Fourth
2013	Men's	Fourth
	Women's	Second
2014	Men's	Fourth
	Women's	Fifth
2015	Women's	First
2016	Juniors	U11A
2017	-	-
2018	-	-
2019	-	-
2020*	-	-
2021*	-	-

\*\*Denotes shortened season due to pandemic

## 90th Anniversary Dinner Speeches

**We heard from some fantastic speakers throughout the 90<sup>th</sup> anniversary dinner. Harry Wark gave an insight into the Club's rich history and beginnings 90 years ago and how the Club officially became the Glebe District Hockey Club.**

Carole Wark painted a picture of the history of GDHC core values, family and equality. She shared how the Club became the cornerstone in a predominately working-class, tight-knit community.

Rachael Beckett spoke about how the future of the Club and how it provides more than just a team to play for. That it is a community to grow up in and belong to.



*Harry Wark*



*Carole Wark and Sue Heath  
(Club President)*



*Rachael Beckett*

## Speeches

### Harry Wark – Our History

The Founder of our Club, Michael Keegan was born an Irish Catholic in Galway in 1885 to working-class parents. A few years after leaving school he became a patrician brother and was sent to Saint George's patrician brother's school in Mussoorie, northern India, not far from the Tibetan border.

In the 1910s and 20s, hockey was the second most popular sport in India behind cricket and it was here that he learnt to play hockey. He grew as a player and was selected in the all-India national team.

In 1926 after a few years back in his home country, he was transferred to Holy Cross College, in Ryde, Sydney. Here he established hockey teams at the school and in 1931 he arrived at Saint James's Patrician Brothers School Forest Lodge (Glebe). The parish social Club had an existing sports Club and fielded cricket, football and tennis teams. I spoke to Tom Pearce a foundation member of the Club, and he told me that the school's sports Club football team was having very little success and when Brother Keegan suggested a hockey team be entered in a

Metropolitan Hockey Competition in 1931, he mustered enough players for a team.

Brother Keegan was its captain coach, and the team won the competition. The following year, two teams were entered, with the second-grade team winning this competition.

In 1933, the Club officially became the Glebe District Hockey Club, and it played its first season under the GDHC banner in 1933.

Without Brother Keegan's commitment to the sport and the Club, up until his transfer in 1937 back to India, GDHC may not exist today. To honor him and his contribution, a trophy bearing his name is awarded each year to the junior player who constantly plays an unselfish game, supports their mates, never gives up and is able to accept victory and defeat equally.

Times were tough in the early 1930s with the Great Depression following on from the Rozelle Bay timber strike of 1929. The hockey Club playing, training and social activities provided great support for the unemployed and those down on their luck at that time. Camaraderie, community, social interaction, and friendships have been part of the reason people have played hockey since the Club's inception and are as true today as they were in 1931.

The forties and fifties were the golden years of the Club's success and Glebe were the dominant Club in the competition, winning 16 first grade premierships in a 20-year period. The Club won 7 first grade premierships on the trot from 1947 to 1954, which still remains an SHA record 66 years later.

The first-grade team of this era had a great commitment to each other and to the Club. The team spirit was palpable, and it was capably led by captain Bill Ryan. Bill had the ability to bring the best out of the team, particularly when it was hard pressed and under the pump. Teamwork, team spirit, and contribution to the best interests of the team and the Club overrode any tendencies to individualism and hero runs.

The harder the game got, the better the team played, and it won many of its hard games in the last few minutes of play. It accepted victory with humility and defeat with good grace, and always did its best.

It was not until 1978, that the Club fielded its first Women's teams in the North Shore Hockey Association Competition, after the wives, sisters, girlfriends, and daughters of some of the players were down at Jubilee watching the games and brought the idea to life.

These Women had the dedication, determination, tenacity, generosity, and commitment to make the venture happen. It was these same qualities and

commitment that sustained the Women's Club by organizing social and fund-raising activities.

It was not until 1990, that the Women's and Men's teams united under the name the Glebe District Hockey Club. While the Men's Club had been fielding female players in its Junior teams since the 70s, they were having to leave the Club to play senior hockey. The amalgamation of the two Clubs followed the 1990 AGM where Pat Nilan moved the motion and I seconded it that the two Clubs be united under the name the Glebe District Hockey Club. In 1991 three Women's teams played in the Eastern Districts Competition under the auspices of the Glebe District Hockey Club.

Today, our Club is 60% female and six out of the eight people on the Club's executive are Women's, including the President and Secretary. In my view we are a much stronger organization together.

As a Club we are now able to foster our Juniors, both male and female, and move them up through the ranks.

Our first Junior team of under 16s was fielded in 1948. This was a significant milestone, and this initiative is one of the main reasons the GDHC has survived for over 90 years.

Vince Halls Snr selflessly gave up his Saturday afternoons to travel with the Junior teams. Without his contribution, commitment, generosity, and willingness to volunteer the Junior Club may not have become the flourishing Club it is today.

In 1949 Vernon Joseph Turner oversaw a significant expansion of the Club's Junior program. At his own expense Vernon sourced sticks, shirts, and equipment to supply over six Junior teams. His sister sewed shirts from donated materials and many local carpenters and trades people did free work for Vernon, repairing and refurbishing broken sticks.

Vernon's drive, compassion, energy, organizational ability, determination, and tenacity placed the Junior movement on a solid foundation. I had the privilege of having Vernon as the coach of my Junior team in 1957 and he imparted a can-do attitude to us players, and he clearly instructed us in how we were going to play to our potential. He emphasized teamwork over individualism, he was big on sportsmanship and opined that sportsmanship on and off the field was a quality far more desirable than the pursuit of winning at all costs.

At various times over the next 73 years the Club has struggled to find enough Junior administrators, transport operatives, coaches, managers, and umpires to support the Junior Club and in the early 1960s there were considerations about amalgamating with another Club. Fortunately, the senior players of the day stepped up and accepted the call of contribution and commitment and slowly turned around the Junior Club.

Contributing to the smooth running of the Juniors is a significant commitment. It can be demanding and tiring but volunteering brings its own rewards and thanks to our generous volunteers and latterly the Arthur Stubbs Foundation, the Junior's teams are going strong and today we field 10 teams and have a 25-player strong Minkey program.

Glebe administrators and officials are all volunteers; however, they often get more brickbats than bouquets, which can be discouraging, and disheartening but most over the years have had the toughness and resolve to do the job in front of them, with great generosity.

Over its 90-year history, the fortunes of Glebe District Hockey Club have waxed and waned. Fortunately, it has been blessed with sufficient people with a positive, cheerful, optimistic, can-do attitude and approach to life, who have volunteered and have shown great commitment and contribution to the Club.

There have been many sporting Clubs bearing the Glebe name over the past 150 years. These Clubs have included athletics, cycling, rugby union, rugby league, cricket, soccer, lacrosse, tennis, baseball, lawn bowls, trotting, car racing, and rowing. Of these only the rowing Club and the hockey Club survive today. And this survival is only because of the commitment and contribution over the years from our players and volunteers.

The future of the Club looks exciting as it heads towards its centenary. It currently has the commitment of many volunteers throughout the Club for whom we are all grateful, and I look forward to seeing what's to come over the next decade.

### Carole Wark – Our Values

Thank you to the GDHC Board for the invitation to share with you some reflections on the Club values of family and equality on this special occasion. Not many community sporting Clubs can boast 90 years of life and participation, so it is something to celebrate.

I like to know where those values of family and equality have come from. And how will they be the foundation for the Club as it hopefully moves to its centenary celebrations.

Harry has already given you some details about the Club's founder, Br McCarten Keegan, who was just one cog in the vibrant St James parish wheel, a Catholic subset of the predominantly working class, tight-knit Glebe community. In his history of Glebe, *Grandeur and Grit*, Max Solling gives us an idea of what life was like at the time the Club was founded.

He tells us that 'In a world of restricted geographical mobility and limited cultural horizons, most people rarely travelled far.' Certainly, the Club's first selectors didn't have the problem of unavailability due to a good snow season or a July overseas holiday. Glebe residents back then lived with or close to relatives. Money was short. Almost 40% of male earners were unemployed and Women's, when they married, gave up paid work.

The 1933 census recorded that 88% of people living in Glebe lived in rented accommodation which generally took a quarter of their income. There were 25 fruiterers, many of them Italian immigrants, the Galluzzos among them, 17 butcher shops, 44 corner stores, two pawnbrokers run by Women's, and the Astor cinema. Why go anywhere else?! There was a complex interdependence between shopkeepers trying to make a living and Women's trying to juggle the meagre pay packets brought home by husbands working long hours in often dangerous workplaces.

Relying on your tribe when the chips were down was particularly the case at St James Church, the Club's birthplace, where big interconnected Catholic families, all housed within a stone's throw of one another, lived daily the values of generosity, respect, sticking by one another and looking after your own on what were sometimes dangerous and unforgiving streets. The Club's first written documents record many examples of families - siblings, parents and children, cousins and in-laws playing together and involving their extended families in the socialising, fundraising and equipping of those early teams, Men's and Women's. A Club's history is much more than a list of annual trophy winners, numbers of games played and elections of office bearers. So much of it is *lived*, rather than recorded, and it remains untold except in the pictures and stories that we piece together, especially at occasions like this.

*These comments - Feels like a family, everyone is working towards the one goal, working hard for each other, loyalty, support, selflessness. There's a place for*

*everyone in the family*, these comments sound just like many of the stories that Max Solling and Harry Wark tell about families back when the Club began and in the years that followed.

I came to the Club in 1980 when the Men's teams were experiencing competitive success and Jubilee Oval and the Clubhouse were the centre of the universe on Saturdays. In fact, for most of the week, because people were there training, coaching, playing and socialising 6 days a week.

I wasn't from one of the Glebe families - a Nilan, a Howe or a Wark. I was an outsider. With my blood family hours away in country NSW and at a difficult time in my life, I found that people at Glebe played life like they played hockey, with tenacity and spirit - and I found, that no matter what happened, I had people I could rely on.

I look out tonight and still see people who took me in back then, who became my family, and in time my family's family. I'd like to make special mention of my tenacious, committed and generous friend, Ann Rochester, Pat Nilan's niece, who was the first Women's convenor when the Club finally accepted Women's as members in 1990.

Ann and I played fullbacks in the days of one up/one back, and we continued to cover each other, playing down the grades together for nearly 30 years, until she said to me one freezing, windy Sunday night at Little Bay, 'you know Carole, we could just go out to lunch on Sundays.' We stopped playing after that season, but she is still here tonight supporting the Club, and certainly continues to support me and mine in all of life's challenges – *this is our history - once you become part of the Glebe family you're a family member for life.*

When we speak of Glebe Family, we must also speak of the value of Equality, because the one is dovetailed into the way we live out the other, especially for our Women's and our Juniors. The Club has always had a sense of egalitarianism, that everyone deserved a chance and a hand up in difficult times regardless of colour, creed or social status. Competing on the sporting field didn't put you at the same disadvantage as not having work or a reliable roof over your head. Hockey was a kind of social leveller and the eventual competitive success of the Club's Men's teams particularly against teams like Sydney University had an edge to it. Our lads weren't just equal to the task – they were champions and their success against the odds drew big local crowds on game day.

At the time our Club was formed, though, the lives of Women's could hardly be described in terms of equality, especially those Glebe Women's from working class backgrounds. Unlike Women's in our Club today, they had very little choice and control over their lives. Against the backdrop of horrific stories of domestic violence, unwanted pregnancy and stillborn children, it's pretty easy to say that a woman's lot is not as bad as it used to be 90 years ago, and we should be celebrating that.

But when we say today that *everyone is equal in the Club, no-one is above each other*, those words must match the deeds. I think the story of Ester Taylor, our first female Life Member, can help shift the way we have looked at equality and give us a useful model for living it in the Club's future.

Earlier this week, I ran into Sue, the Club's first female President outside her house in Boyce Street, Glebe, where coincidentally, Ester lived when she married William Taylor at St James Church, at age 38. Ester's two boys played with distinction in the very first Glebe teams and the house at 3 Boyce Street was used for meetings of the Club committee for many years. Both she and her husband were very active supporters and administrators of the Club over many years, but it was Ester who was elected along with John Quinlan as the Club's first Life Members in 1947.

Harry Wark, in Ester's Biography, suggests that this shows our forebears at the Club recognised and rewarded service and contribution irrespective of gender. I think if we read between the lines a little, we can see in Ester's lived example that there is more to equality. I think her life experiences and circumstances provided her with a self-confidence and a genuine sense of being able to make a difference in the lives of people in her community, not by looking down at others from her position of privilege, but by respecting them, offering them genuine kindness and sharing with them her personal gifts, her time, her resources. People consistently expressed such gratitude to her. I think she was respected and rewarded for the quality of her person as well as for her contributions.

Respect and gratitude, given generously and with kindness to others in the Club family, all others, not expected or demanded because of your playing record, your age, your gender, your Club connections. That kind of respect is the word and deed of equality that gives hope and makes you want to get up and do it all again for the next 90 years.

We are a very different Club to the Glebe District Hockey Club of 1931, and even if some of us still live a stone's throw from Jubilee, we live in a very different society. What are the signs of hope for our Club heading into its centenary?

The first for me is that the Club is showing an openness for truth-telling. Having Kathy Dodd Farrowell back with us tonight is a powerful sign that the Club has the maturity to make some space for the many closeted and untold stories of our society and our Glebe family, and that we will be the richer for it.

The second is that little patch of International 5s turf that is not so far from being a reality. It will be a chance at back to basics old style Club training, picking up the stick each day, meeting mates, siblings, neighbours and having a hit together. Sure, we might want a full-sized pitch, but what we need is a family space, a kind of backyard, where we can meet informally to train together, get to know each other across the ages and grades and sexes and build our young players of the future.

The third is that outsiders like I was, are still saying that they feel welcome at our Club. They are still throwing in their lot and doing the significant amount of work that it takes to run a community sporting Club. And they are still bringing their kids to us. To hear in the news this week the appalling revelations of the toxic culture of Australian Women's gymnastics was such a contrast to my experience of listening to Molly, Abbey, Misha and Amy, the coaches of our Under 9s at Kyeemagh last week. Positive, respectful, hopeful.

Look around you tonight at the people that the game of hockey and playing it for this Club have given you. Be grateful. Be respectful. And when the time comes tonight to put your hand in your pocket, be generous so in 10 years' time another generation in our family of players will be able to say, as we do tonight, we belong to a champion Club, a Club of champions.

## Rachael Beckett – Our Future

Good evening, life members, board members, distinguished guests, fellow players, volunteers and community members. Thanks Harry and Carole for taking us through the origins of the Club and where we are today.

Today, we celebrate our 90th anniversary. Let's go forward a few years to 2031 when we get to our 100th celebration, **what sort of Club will we be?**

If we build on the strong foundations we already have and continue to develop our commitment to family, equality, contribution and commitment we will be a broad and diverse Club, with competitive and successful teams providing opportunities for players of all skill levels. Through the assistance and mentorship of our senior players, our Junior players will naturally aspire and gravitate into playing Seniors. We must work to ensure the Club continues to welcome and nurture our Juniors into becoming committed players and members of the Club and community. This is the vision I have for the Club.

We should aspire to be a Club where everyone is valued and encouraged on and off the field. Just as Brother Keegan and Vernon Turner did so in their time. From Juniors to Seniors, lower grade to first grade: everyone should feel part of the family, like they are home, the same way our family has felt part of the Glebe family since 2009 when Sarah started in Minkey. This is our future.

We are one Club. Juniors, Seniors, Men's and Women's, are all a valued part of this Club and are its lifeblood. In recent years we have built momentum in bringing the Club together. The number of Junior players now playing in the senior grades and volunteering across the Club is a demonstration of this. As this momentum continues, our future looks bright, however there are challenges ahead that must be addressed to further develop our Club.

Firstly, the issue of turf. Unlike many of the Clubs in greater Sydney, we currently have no "home turf". But that in itself attests to the Club's strength, resilience, and creativity. Don't get me wrong, securing a turf space in our future will happen. The question is when?<sup>1</sup> As lobbying for a full-sized turf continues, the future does hold hope, and as Carole referenced earlier, with the opening of the 5s a side hockey field committed for 2022, down at Jubilee Oval. Even without a full-size turf, through the creative thinking and determination of the Club, every week, every team gets access to synthetic turf to train on. In this way, our current lack of home turf does not define or limit us, instead it is our core values that bring us together, and it is these values that will continue to shape our Club in the future.

The second challenge is to ensure that our values are not only embedded but displayed in the behaviour and attitudes of all Glebe players, volunteers, and spectators both on and off the field. In this way, we can strive to meet the standards and share the visions of those like Vernon Turner who in Harry's words,

---

<sup>1</sup> Since this speech at the 90th anniversary in June, the City of Sydney Council they voted unanimously to approve the building of The Crescent Synthetic Sports Field

“would opt for sportspersonship on and off the field as a quality far more desirable than the pursuit of winning at all costs”. Bad behaviour towards teammates, opposition, umpires, spectators, or community members should not be tolerated.

We have the opportunity of using the strength of our senior players and community volunteers to guide and nurture our youngest players in developing into strong, respectful community members. This is a responsibility we all own and must commit to if we are to truly be an inclusive Club committed to our values.

The third challenge on our horizon relates to building a sustainable and happy volunteer base. We have heard how the contributions of our volunteers have and continue to develop our Club. The initiatives that see our Junior and young senior players assisting with coaching, umpiring, and helping with administrative tasks are important steps in developing our future. Along with these initiatives we must find other ways to share the load. It is not sustainable for so few people to be driving the Club. Many hands make light work, and our future relies on finding ways to break roles down further to facilitate this. Without this, we run the risk of volunteer burnout and creating uncertainty in the Club's future.

Through my involvement in the Club, I know that these challenges can be addressed, and the future looks bright.

Having stood on cold sidelines and in dugouts year after year, I have seen how effective the Club's grassroots programs are in creating happy hockey players and strong community connections across families. Starting as shy Minkey players, it is through the building of new friendships and playing year after year, season after season, that I've observed players grow and flourish into confident young Men's and Women's. In this way, our Club provides more than just a team to play for but rather a community to grow up in and belong to.

Along the way, many senior and former players influence our developing players, and by the time our centenary comes our current Juniors will be among the senior players who will be able to mentor and guide the 2031 Junior teams. We already see Seniors helping Juniors regularly. Continued positive involvement of senior players in training, mentorship and guidance will encourage our Juniors to stay with the Club into adulthood and ensure the ongoing player base for all teams.

As players and members of Glebe hockey, we shape the future. It is through us that we can continue to drive the direction of the Club, and live up to our values of family, equality, contribution, and commitment. It is through us that we can make our Glebe hockey Club a strong and united Club and a strong united community.

## Obituaries

Over the period of time since the 2020 Annual Report, the following members and supporters have passed away. We recognise and give thanks for their contribution and commitment to the Club.

### **Ronald Cheong (9 June 1944 – 29 March 2021)**



*Ron Cheong as a young man*

Ron Cheong was the epitome of the quiet achiever. He was a low-key person who throughout most of his life toiled away for the greater good and made a substantial contribution to the enjoyment and welfare of others in the many spheres of his influence. His health failed him in the last 12 years of his life, which prompted him to pass the baton on to his successors to advance the many causes that he helped flourish in his prime years.

Ron's parents were both of Chinese descent who were born in Australia. They lived in Darwin in the late 1930s and early 1940s, with Ron's father working as a civilian at Darwin airport. The eldest two of the Cheong family's seven children, consisting of four boys and three girls were born in Darwin. In early 1944, during World War Two, (WW2) bombs started to fall around Darwin airport and Ron's father was instructed by his employer to remove his family from the city.

The family relocated to the central west Queensland town of Longreach, a town of around 2,000 people, 700 kilometers west of Rockhampton. Ron, the family's third born child, was born on 9 June 1944 in Longreach and he spent the first two and a half years of his life there. As Ron's older siblings were approaching high school age, Ron's parents reasoned that educational opportunities would be better for their children in Brisbane than in Longreach and moved there in 1947.

Ron's parents bought a corner grocery shop in Stanley Street, a major thoroughfare in central Brisbane, which was open six and a half days a week, 52 weeks a year

with never a holiday or a break. The Cheong children helped their parents in the shop.

For high school Ron went to the Brisbane State High School, after which he studied Pharmacy for two years at Queensland University, before deciding that life as a pharmacist was not for him. In his early 20s Ron found work with the Australian Public Service in the Civil Aviation Authority (CAA), in the accounts department, and stated moving up the ranks in this department, and in the late 1960s became head of accounts for the CAA in Brisbane.

In the early 1970s, Ron transferred from Brisbane to Sydney with the CAA, working in the accounts department at Sydney airport, and living at Normanhurst. It was at the CAA that he met his future wife, Lorraine. Lorraine was born and bred around Moree in northern western New South Wales, 628 kilometers from Sydney, and like Ron had come to Sydney seeking work. Ron was a quiet reserved chap and Lorraine was an outgoing livewire. They married in 1981, a second marriage for both of them.

Their first house was a single-story terrace house in Ross Street, Glebe, which is where they initially reared their four children Panda, Andrew, Alison and Adrian. As the children grew and the house became too small for them, the family moved to a larger two-story house at 168 Wigram Road, Glebe.

In 1995 Australia's airports were privatized and CAA was disbanded. The managing entity of the privatized Australian airports was then called the Federal Airports Corporation. After working for the CAA for over 30 years, Ron then aged 51 was made redundant. It was a difficult time for him.

After leaving the CAA Ron worked in several jobs for short periods of time, including as a factory forklift driver, a truck driver, and then as a delivery driver for Glebe District Hockey Club Sponsor, Galluzzo Fruiterers, at 187 Glebe Point Road, Glebe, for 4-5 years. He was reliable, honest, thorough, and hardworking and well-liked by his fellow employees. A bad back and then a diagnosis of lung cancer in 2013 curtailed his work activities.

Panda Cheong, the eldest of Ron and Lorraine's, children started school at Saint James' Catholic Primary School Glebe in around 1989 and her siblings followed her to Saint James. Saint James is the school at which the Founder of the Glebe District Hockey Club (GDHC) taught as a Patrician brother in the boy's secondary school. He started teaching there in 1931.

In the 1990s there were a dozen or more families with children who attended Saint James and whose children also played in the GDHC Junior teams. Panda and Andrew wanted to play sport with their friends and started out with the Glebe Minkey Squad of 1990. Club Life-Member Peter Busch was the Minkey coach at that time, assisted by Life-Member Geoff Paterson. In 2021 Peter plays in the Club's Men's Fourth Grade team.

Lorraine and Ron helped out when and where they could at Minkey and so began Ron's 20-year association as an official of the GDHC. Ron was one of several parents of children at Saint James' Primary School who were members of the GDHC Junior Committee throughout the 1990s. Jim Oman was for many years the Club's Junior Convenor and his fellow Committee Men were Mick Tapsell and Ron Cheong.

They formed an effective and efficient Junior committee that organized a vibrant Junior Club and also attended meetings and were actively involved in running the Central Area Junior Hockey Association (CAJHA), that organized Junior hockey south of the Harbour. Ron was secretary of the CAJHA for 5-6 years and was an important link between the CAJHA and the GDHC. He was one of the best secretaries that the CAJHA ever had, and his organization of teams, competitions, grounds and lines of communication was even handed and efficient. He always took good care of Glebe's best interests but was equally fair and reasonable in his dealings with all CAJHA affiliated Clubs. Despite being a quiet, unassuming, softly spoken chap, Ron was a good communicator, and an excellent organizer.

Other Junior parents of the day who were heavily involved in running the Juniors were Eddy Crook and Neil Lawson. Neither Jim, Ron, Mick, Eddy or Neil had ever played hockey, they never coached but they were expert and dedicated sport's administrators who provided an environment that was well organized and ensured things ran smoothly for the Club's coaches, managers, and its players.

Ron was actively involved as an administrator with the Glebe Juniors for 14 years, from 1990 to 2003. The consummate team player Ron slotted in where and when needed without complaint or grumble. He just did it because it needed to be done. During these years he also distinguished himself as a great cook on the Clubhouse barbeque, not only at Wednesday night training all winter, but at other social events like the much-loved annual Junior Barbeque fundraiser where he produced some amazing dishes on the hotplate.

Panda Cheong played 100 Junior games from 1990 to 1998. A recurrent dislocated patella ended her hockey career. Andrew played 192 Junior games from 1990 to 2003 and 340 senior games from 2001 to the present, and he is still going strong in Third Grade. Alison played 110 Junior games from 1993 to 2003, and 95 senior games from 2004 - 2009. Adrian played 22 Junior games in 2007 and 2008.

For many years during the mid to late 2000s Andrew and Alison helped Vernon Howe run the Glebe Minkey Squad down at Jubilee on Saturday mornings.

The Junior Convenor of 2000, Andrew Dart wrote about Ron in the 2000 Junior Annual report: "In my first year as Junior Convenor I would particularly like to thank my Co Junior Committee Member Ron Cheong. Ron is a 'Tower of Strength'. Apart from his roles as Junior Equipment Officer and Junior Committee Member, Ron also holds the position of Central Area Junior Hockey Association Secretary, a job he fulfils with immense passion and commitment. Without Ron's support and

encouragement and the ease with which Jim Oman handed over the Junior Convenor's role, I would never have lasted the season."

In the 2001 Junior Annual Report Andrew wrote: "Once again, Ron Cheong, as Co Junior Committee Member, was fantastic. As many of you know, Ron is a workaholic. Apart from his position on the Junior Committee, he also, alongside Lee Farlow, looks after the Clubhouse Canteen, is the Junior Equipment Officer and secretary of the CAJHA, so in effect he has 4 caps. I know how much time and effort he puts into all his positions, and would also like to thank Ron's wife Lorraine, for basically putting up with both of us over the season."

In 2002 Andrew wrote in the Junior Annual report: "Once again, Ron Cheong was sensational, taking on the responsibilities of four positions—Junior Committee Member, Clubhouse Manager, Junior Equipment Officer and Secretary of CAJHA. I personally know that this year was extremely difficult for Ron, particularly in regard to a family bereavement, however, on behalf of the Glebe Junior Club — a very big thank you!"

Ron continued on as Clubhouse Manager in 2003, 2004, 2005 and 2006, stepping down at the end of the 2006 season. He served on the GDHC Management Committee for the four years from 2003 to 2006. The 2003 Junior Annual Report records: "to our ongoing Clubhouse manager, Ron Cheong once again a very, very big thank you. Ron as usual had everything under control throughout the year and the Clubhouse Canteen ran extremely efficiently and profitably." Ron was actively involved in organizing the early Glebe Junior Carnivals held at Jubilee Oval, Glebe, which were a great success.

In the mid to late 2000s Ron would usually come out to watch the senior Men's games on a Saturday afternoon, which he enjoyed doing. Ron liked a smoke while he watched the games and often sat away from the rest of the Glebe supporters, behind the goals with Club Life-Member Martin Howe, who also liked a smoke. Unfortunately, both Ron and Martin developed lung cancer and died from the disease.

Ron developed lung cancer in around 2013 and his prognosis on diagnosis was considered poor. He had a lung resection, chemotherapy and immunotherapy for the disease and lived another 7-8 years. Most of these years after his diagnosis he had a reasonable quality of life. He was troubled by moderately severe depression for the last 10 years of his life.

In the last couple of years of his life Ron's health was poor and he had several admissions to the general wards and the ICU ward at RPAH, Camperdown for respiratory and gastrointestinal bleeding, secondary to his lung cancer, but each time he recovered against the odds.

Ron's wife Lorraine died suddenly of a heart attack on 10 October 2020, which was a major setback for Ron and all the family. His final few months were spent at

the Annandale Nursing Home at 76 Johnston Street Annandale, which is where he died on 29 March 2021.

Ron made significant contributions to the school community at Saint James' Primary School, Glebe, the GDHC, the CAJHA and to the wider community. He led by example and was a doer rather than a talker.

A couple of ex-Glebe hockey players who lived in the local Glebe area would from time to time find themselves down on their luck and short of cash before their next welfare cheque payment landed in their bank account. These chaps would on a regular basis would call in on the Cheongs at 168 Wigram Road Glebe for a chat, an affirmation of their importance to the Glebe Hockey Club and the Glebe community. The doorway chat was a positive, uplifting experience for both parties.

At the end of the friendly positive discourse at the front doorway Ron or Lorraine would slip the ex-player some money to buy food, to sustain them until the pension cheque arrived. Ron and Lorraine were very generous people and although "not rolling in it" they willingly shared what they had with those people less fortunate than themselves.

It was my privilege and pleasure to have known Ron, Lorraine and their family for over 30 years. They were constant contributors to the society in which they lived, and Panda, Andrew, Alison and Adrian are carrying on in Ron and Lorraine's footsteps in this regard.

Rest In Peace Ron Cheong. One of the GDHC's finest.

**Harry Wark**

# GDHC 2021

