

# GDHC Newsletter Red Rag

May 2026





# NEWSLETTER



@glebehockey

www.glebehockey.com.au

## WELCOME TO 2026

### In this edition

Player milestones	...4
Glebe on the field	...6
Director's Cut	...9
Campo's Q&A	...11
Glebe gets social	...14
Arthur Stubbs Foundation	...16
Around the grounds	...18
Briars Derby Day	...21
Junior Holiday Camp	...29
Opinion piece	...31
From the archives	...34

Dear Life Members, Players and Glebe Families

#### Welcome to the first edition of the Red Rag for 2026.

It's been a jam packed start to the season with our Glebe Hockey community getting involved and behind some great events. In this edition you can read about Arthur Stubbs Foundation fundraiser, our massive day at Briars Derby Day and more events.

We'll also take a nostalgic journey back through our archives to celebrate some memorable premiership victories in 2006.

The club has been buzzing with social activities to start the year, including our senior's pub crawl and individual teams events.

So grab your favorite beverage, settle in, and enjoy catching up on all things Red Rag!

Thanks to all the contributors to this edition; Adam Campano, Myf Waddell, Harry Wark, Amanda Chivers and Mon Bordignon.

Content idea are always welcomed to [communications.director@glebehockey.org.au](mailto:communications.director@glebehockey.org.au)

Angela Micic, Communications Director  
Editor, GDHC Newsletter May 2026

### DATES FOR THE DIARY



13 June - Junior Disco

19 Sept - Senior Presentation Night



## MESSAGE FROM THE PRESIDENT

Dear Life Members, Players and Families,

It's a pleasure to welcome you to this edition of our Red Rag, our first for 2026. A pictorial feast of stories and images that capture life here at GDHC.

Our club is, at its heart, a collection of friendships, built over shared moments, lively conversations, and the simple joy of coming together. Whether you are a long-standing member or newly arrived, the sense of belonging that defines this community is something we all help to create, and it continues to be one of our greatest strengths.

I want to express my sincere thanks to the many volunteers whose generosity of time and spirit keeps the club thriving. Their quiet contributions, often behind the scenes, are what turn good intentions into lived experiences and transform individuals into a truly connected whole. It is this shared commitment to one another and to the values of inclusivity and fellowship, that sustains our social cohesion and ensures our club remains a place where people feel welcomed, valued, and at home.

Enjoy the read and thank you.



*Sue Heath*



# NEWSLETTER



@glebehockey

www.glebehockey.com.au

## PLAYER MILESTONES



**Lou Tapsell**  
400 Games



**Andrew Cheong**  
400 Games



**Sam Chrysos**  
300 Games



**Kate Charge**  
300 Games



**Mon Bordignon**  
250 Games



**Jamie Travis**  
200 Games



**Henry Hunt**  
50 1<sup>st</sup> Grade Games



**Corey Morrow**  
50 1<sup>st</sup> Grade Games



**Eric Rutledge**  
100 Junior Games



# NEWSLETTER



@glebehockey

www.glebehockey.com.au

## PLAYER MILESTONES



**Jess Kennedy**  
100 Games



**Cate Heath**  
100 Games



**Lauren MacRae**  
100 Games



**Aiden Najdzion**  
100 Games



**Liv Branson**  
100 Games



**Ellie Gibson**  
100 Games



**Molly Busch**  
100 Games



**Alicia van Gestel**  
50 Games



## GLEBE ON THE FIELD

### Singapore 6s

Our Glebe women participated in the Singapore 6s in February this year. Amanda Chivers, Kameeka Wark, Sophia Tzannes, Camille Worsley, Sophie Lloyd, Meg Wotherspoon and Ashley Van Damme.



Glebe lined up against some of the most formidable club and national talent the game has to offer - teams from Germany, the UK, the US, Malaysia, Thailand, Hong Kong, Japan, Singapore and Australia all converging on the one competition.

The standard was extraordinary. Alongside us on the park were players and coaches who have graced the biggest stages in world hockey - Kookaburras, Hockeyroos and HockeyOne coaches among them, including Jacob Whetton, Jason Gabriel, Steph Andrews, Tim Deavin and Kathryn Slattery. Not a bad crowd to share a pitch with.

And Glebe held its own. More than held its own.

*Back Row: (L-R) Meg Wotherspoon (GK), Kameeka Wark, Ash van Damme, Sophia Tzannes.*

*Front row: (L-R) Amanda Chivers, Sophie Lloyd and Camille Worsley*

The standout moment of the tournament? Facing a Malaysian national team with everything on the line, we made the bold call to pull our goalkeeper and push an extra field player forward. It's the kind of gamble that either defines your tour or ends it. For us, it defined it — we held on for the draw.

But the scorelines, as meaningful as they were, aren't the real story of this tour. The real story is the people who wore the maroon and white. Kameeka Wark pulled on a Glebe jersey for the very first time - a moment that didn't go unnoticed. And in one of the most heartwarming debuts the club has seen in recent memory, mother and daughter Sophia and Camille took the field together, becoming the first mother-daughter duo in Glebe's history to tour together. Camille and Sophie were also the youngest players to join a Glebe tour.



## GLEBE ON THE FIELD

### Singapore 6s

And then there's the detail that stopped me in my tracks. The last time a Chivers and a Wark shared a field in Glebe colours was over 25 years ago, when Ken Wark was still playing alongside Amanda's brother Kevin - former club captain. Seeing those two names on the same team sheet again, all these years later, hit differently. Some things never get old. Some names are just Glebe.

The team got knocked out in the quarterfinals of the bowl competition with an unlucky goal that narrowly stopped us going to shootouts.

### Vietnam Tour



Alex Branson, Georgia Branson, Liv Branson, Monica Bordignon, Zoe Leuthard, Emily Williams, Ash Klimoski, Luke Daynes, Josh La Spina, Henry Hunt, Mack Noller, Ed Noller, Matt Wilson, Nico D'onofrio

In March a small contingent of Glebe girls and guys set off to Ho Chi Minh City for an unforgettable hockey tour. The first time we have played in a tournament in Vietnam and it didn't disappoint - providing equal parts competition, chaos, and culinary adventure.

Played on a much smaller pitch than the Singapore 6s but with more game time, games were squeezed into two very full, very hot days. Shade was a luxury, and substitutions were less tactical and more about basic survival. Somehow, through the sweat and sun, all of our teams battled their way into the finals, an outstanding effort across the board.



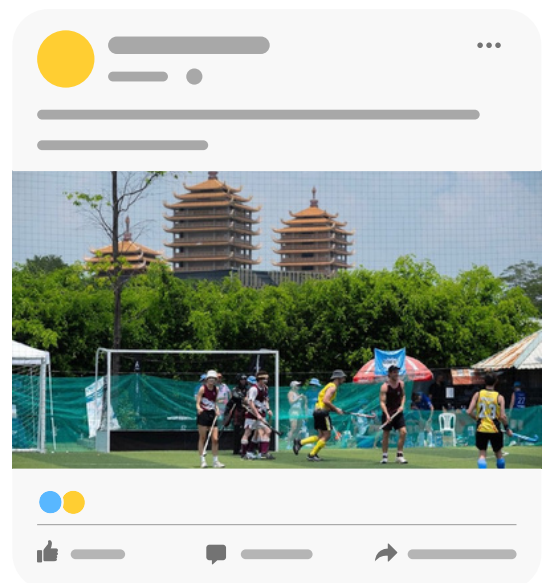
## GLEBE ON THE FIELD



When the dust (and sweat) settled, our men's and mixed teams came away victorious, bringing home the wins and the bragging rights. Our women's team can take plenty of pride in their performance as well, finishing runners-up after facing a particularly well-recruited opposition. Off the field, the team truly excelled.

Ben Thanh Market saw some world-class bargaining, rooftop pools were put to good use, and the group fully committed to costume night- highlighted by a very public karaoke rendition of Angels on Bui Vien Street. Transport-wise, everyone embraced the true local experience, risking life and limb on Grab scooter rides.

All in all, it was a brilliant trip filled with great hockey, plenty of laughs, a few upset tummies, and just the right amount of questionable purchasing decisions.





## DIRECTOR'S CUT

### NEW MEN'S DIRECTOR - Sash Fomin

#### Getting to know you....

#### Why you volunteered to be a Director?

It just feels strange to me to be part of a thriving community and not put my hand up to volunteer and help out where I can. I am a people person and love being part of something bigger. I have big shoes to fill after Adrian McKeown - so I hope I do it justice and create shoulders for the next person.



Sash - 16 years old

#### How and why did you start playing hockey?

My grandfather played for the English National team, and so my mother was an avid hockey player in her youth, and got me into it.

#### What's a small habit or routine that has unexpectedly improved your life?

Texting and emailing as though you were in the room having a conversation with someone. Choosing to "leave the room" (not respond for a period of time), or consciously "enter" the room (and be responsive for a dedicated period of time). I did this primarily by only making certain apps / messaging services available on specific devices (e.g. laptop vs phone).

#### What book, movie, or song has influenced you most profoundly, and how did it change your perspective?

A book called "Ikigai, the Japanese Secret to a Long and Happy Life"; as with all media, I believe the way you interpret them comes down to timing and headspace. For me, when I read this book, I didn't know what I was searching for and had recently lost the main purpose in my life. I vividly remember having deep philosophical conversations with my brother over a period of months around this period. The book changed my perspective in many ways, and really got me thinking about my ikigai - a reason to jump out of bed each morning. It details:



1. Mission: What you love and what the world needs.
2. Vocation: What the world needs and what you can be paid for.
3. Profession: What you can be paid for and what you are good at.
4. Passion: What you are good at and what you love and where they intersect, to form your ikigai.



**MEN'S DIRECTOR - Sash Fomin**  
Getting to know you....

## DIRECTOR'S CUT



**If you could instantly master any skill without effort, what would you choose and why?**

I don't think I'd want to master any skill without the effort, I love the process of mastering skills over time and repetition. Maybe regaining my fluency in Russian or French?

**What's something that most people might not know about you?**

I'm a mixed bag of 1/4 Russian, 1/4 Ukrainian, and 1/8th each English, Welsh, Scottish, and Irish; so it took me at least 2 years to adjust to the heat... (another reason I love hockey being a Winter sport).

*Sash - Family affair*



## CAMPO'S Q&A

Glebe Men's 1st grade star, Henry Hunt, has had quite the 2026 season. As well as being an integral midfielder in the Glebe 1st grade side, Henry made several high representative selections, including NSW U/21s Indoor, NSW Country, the extended NSW Pride squad, and finally the Australian Country team, nicknamed 'The Vipers', that recently toured Indonesia. In this Q&A session, H goes head-to-head with his PL1 club coach and delivers some gold nuggets:

***Describe the selection process and your initial reaction to being named in the U21s team.***

The selection process was very old school in the sense that at the end of the tournament presentation, the tournament director named the U21s side. Funnily enough, I didn't know this was how selection worked, so I was walking back to my seat in the grandstand until I heard my name called as the third individual named on the team. My initial feeling was shock, followed by extreme gratitude.



***Did you have any family support during the tour?***

I was fortunate enough to have my grandparents along for the full tour. In addition to that, my parents were able to watch half of the trip.



***What was the tour itinerary in Indonesia and how did the matches go?***

The tour itself covered the whole of Indonesia. Our first game was quite a challenge as we played the national side and lost 3–1. After that, we reviewed some footage and changed some tactics - "give the ball to Henry" was proposed by myself. It seemed to work, as we played the national side again and were able to win 2–0. These games took place in Jakarta. We then flew around Indonesia, including Bandung and Surabaya, where we played their state teams. We played six games across Bandung and Surabaya and were able to get the better of those teams comfortably.



## CAMPO'S Q&A



***How would you describe the standard and playing style of the Indonesian national team?***

The national team was agile and extremely skilful. They were relentless, as they were using the games against us as a selection trial for their Asian Cup team. All players within that team displayed a high level of craftsmanship on the field and their effort level was insane.

***How would you assess your personal performance and role within the team during the tour?***

Performance-wise, I had a very good tour, mostly dominating the middle of the field while playing in the defensive midfield (DM) position. My role was to win the ball and distribute it in the most aggressive way possible.

***What were the biggest lessons you learned from competing at an international level?***

The overall learning from the tour was that international-level hockey is a “whole different ball game.” The speed at which the game is played means that sprinting interceptions and slow receives can quickly lead you into dangerous situations.

***How did you improve your game as a result of the tour?***

Improvements in my game definitely stemmed from my body position and the time it takes to deliver a pass, rather than simply the speed at which the ball is passed.

***How would you describe the team culture and relationships within the squad?***

Team chemistry was where the core enjoyment of the trip came from. I got along with everyone, but I especially enjoyed the company of the lads from Perth, as they were always looking to crack a joke in any situation. Long bus trips were common, and you could often find me in the aisle of the bus playing Euchre with the assistant coach, sending hand signals to each other (we had some long winning streaks).



## CAMPO'S Q&A

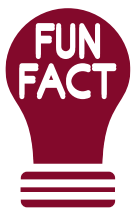
### ***What did a typical day look like off the field during the tour?***

Between games, we would often do stretching and pool sessions, then head to the local markets for dinner, where I wasn't shy about trying anything advertised by the local vendors. We would typically find a pool hall wherever we were staying and hang out together as a team. On a couple of nights, I found myself with the entire squad at karaoke venues.

### ***What key advice or feedback did you receive from the coaching staff?***

The main takeaway from the coaching staff was to be more aggressive when playing as a DM. They believed in my ability to turn and roll attackers and deliver incisive passes to the attacking midfielders and strikers.

The most important piece of advice given to me was to open my hips when driving the ball after beating the player attempting to press me.



***"I signed a local kids' bicycle!" - Not weird at all.***



Reading a printed version? Scan me!



## GLEBE GETS SOCIAL

### BACK CHAT



Back Chat returns for 2026, and if you were wondering how we'd kick off the new season, wonder no more. We went straight to the top - the one and only Ken Wark Jr. And trust us, you're going to want to pull up a chair, because Ken had so much to share we had to make it a two-parter.

Ken didn't just play the game. He defined it. A natural talent who first picked up a stick around the age of 15 - though let's be honest, was there ever a universe where he wouldn't? Ken went on to become one of the most electrifying players of his generation. When the offside rule changed the face of hockey, Ken's blistering speed didn't just adapt. It became the game's new weapon. But don't take our word for it. Let the stats do the talking.

- Three Olympics. Three World Cups. Nine Champions Trophies. 214 Kookaburras caps.
- World Cup gold in 1986. Olympic silver in Barcelona. Bronze in Atlanta.
- Named in the IHF World Best XI. A place in Ric Charlesworth's all-time dream team. Twice player of the series at the Australian Championships.
- And through every moment of that extraordinary career - 400 games in the maroon and white. 350 of them in first grade.

**A Glebe man. Through and through. Always.**

Catch up on [YouTube](#)  
Mostly audio and some visuals - the second part has video of key Olympic moments.



Reading a printed version? Scan me!





## GLEBE GETS SOCIAL

### PUB CRAWL

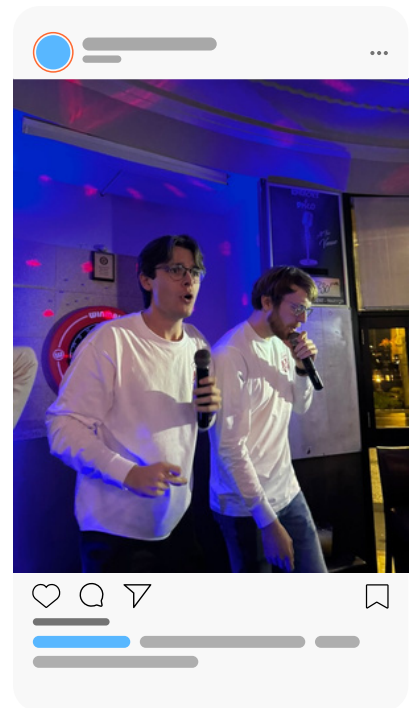
Saturday 23 May saw the Club’s main social night of the year - the annual Pub Crawl. This year’s shirts paid homage to club legend Harry Wark, featuring his famous advice to defenders: sometimes the best option is to hit the ball “hard as you like”.

With a huge turnout of more than 60 people at our first stop - key sponsor Leichhardt Bowlo- we then headed off to begin the crawl.

The first stop was the Toxeth, a former long-term sponsor of the Club, before heading to the ever-faithful Kauri, where the night really hit its stride.

Old and new faces alike hit the stage to belt out iconic tunes. Highlights included Ed Noller and Josh’s rendition of Teenage Dirtbag, while our new French recruits, Celeste Clin and Dylan Dominick, took on the Queen classic Bohemian Rhapsody - brave!

The night wrapped up back at the Clubhouse, with hours of dancing and plenty of good fun had by all.



Catch up on [Team GDHC](#) for all the karaoke action



Reading a printed version? Scan me!



## ARTHUR STUBBS FOUNDATION

A day of hockey, heart and community spirit, raising \$10,000 for our future stars.

The rain stayed away and our one and only fundraiser went off without a hitch! The day was an unforgettable celebration of community, sport and generosity - we were honestly blown away. The players, the volunteers, the bidders, the donors, the spectators, and everyone who showed up for this incredible community - thank you. **We proudly reached our fundraising target of \$10,000** - a huge win for our club and the young people we're backing to chase their sporting dreams.

The juniors lit up the field as always. With wide smiles and boundless energy, they showed what true team spirit and pure joy for the game looks like. After many fun and fiercely contested matches it was a close call and junior teams combined to battle out for the Arthur Stubbs Foundation Junior Carnival Trophy in style - the Tigers and Dragons joined forces to play the combined Rocket-Lightening Bolts team in a 2 all draw! Congrats to all the teams.



Jo Bell - Volunteer and event organiser

Our community showed up and our many volunteers rolled up their sleeves and made this event possible. The biggest shout out to **Jo Bell** who brought the whole event together with her team of volunteers. They're not kidding when they say many hands make light work!



Young Guns & Legends pavillion photo

## ARTHUR STUBBS FOUNDATION

The Legends versus Young Guns game is one of the many highlights of the night. This year was no exception. We were privileged to have Kobi Shetty, Member for Balmain with us. Not only is she a hockey tragic but a great supporter of the club. Taking to the field with the ball's first touch.

Mack Noller led the commentary with a few choice expert takes on the game by our juniors - juniors aren't impressed much by our Legends 😊 We saw new faces join us on the night and some returning Glebe Alum - Zane Goodridge, still got it! We also saw some friendly physicality between Declan Cohen and Dylan Dominik. The game ended in a 0 - 0 draw leading the inevitable shoot out. We saw father and daughter duo, Mick and Sophie Sneesby take each other on - no mercy shown by Mick! The Legends took out the trophy - yet again. This is 2 wins a piece.



*Kobi Shetty, MP*



*Sue Heath - President*

We showed our kids the power of teams, of friendship (even when competition is fierce) and that when people get together and rally behind each other - anything can happen.



*Declan (L) and Dylan (R)*



*Peter Bestel - umpiring the shenanigans*



*Josh La Spina - Legends victorious*



## AROUND THE GROUNDS

### New addition to Glebe Juniors!

Congratulations to Women's director Michelle and her wife Sian on the birth of their daughter, born March 2026. She joins big brother Joe on the sidelines now.



Congratulations to Lynsey Askew (ML3) and Alex on the birth of their son Jude - born Dec 2025 and joins sister Edie and the family hound to make a family of 5! What a joy.



**Our hearts are full and Glebe Juniors is looking bright!**



### Happy 21<sup>st</sup> to Paul Jowett - SL2



Paul Jowett SL2 celebrating 21 years actively playing at Glebe Hockey with 322 games under his belt and counting with 40 years in the sport. Joining Glebe as a fresh faced Brit as a 26 year old. Paul is a legend on the wing or as a centre forward, and not only does he love the sport but he loves the mateship he's formed and how organised we are - well done to our Men's Directors over the years! Congrats Paulie!





## AROUND THE GROUNDS

### Teams getting together

*Season opener*



Team spirit? Our men have it in spades. The SL2 and SL3 boys didn't need much convincing to get behind our main sponsor Leichhardt Bowlo - good teammates, good times, and a very good reason to get together off the field. The bond is real, and it shows.



SL3: Left side: Sam, Dan, Hamil, Ted, Alex. Right side: Sam's better half, Max, Max's better half, Gaz, Adrian



SL2: Left: Sam, Julian, Simon, Caleb Right: Jamie, Graham, Aaron, Sash, John



Get your team to Leichhardt Bowlo. Our main sponsor, our people, our place to be. Organise a team night, support the people who support us, and remind everyone why the second half of the season is the best half.

*The only thing better than playing for Glebe is celebrating it together*



## GLEBE BOOT RETURNS

After a hit last year, The Glebe Boot, a 6km fun run with a twist, turning fitness into a celebration of community, camaraderie, and just a little bit of friendly competition returned for 2026. Now a firm fixture for pre-season fitness.

The unique element of the Glebe Boot is its focus on self-awareness and strategy: each participant estimates how long they think it will take to complete the run. Watches and fitness trackers are banned – it's all about pacing, instinct, and maybe a little bit of luck!



After the healthy rivalry from 2025 and the return of the reigning champion, and new Men's Director Sash Fomin, we thought it would be a done deal but, how the tides have changed! Adrian McKeown, exiting Men's Director has taken out the Golden Boot with a close predicted and actual time, while Liam 'Crowie' Crowhurst taking the silver boot with the fastest time.



**There are two coveted prizes up for grabs:**

The Golden Boot, awarded to the runner who finishes closest to their estimated time, and



The Silver Boot, awarded to the runner with the fastest overall time.



## BRIARS DERBY DAY



*Glebe on the hill*

What an absolutely beautiful day we had for the annual Briars Derby Day on 9 May. The rivalry goes way back.

There's something about a derby day that just hits different.

The familiar faces lining the banks. The friendly rivalry that's been played out on pitches across Sydney for decades. The kids running around while Glebe supporters cheer from the sidelines

The post-game catch up that stretches well into the afternoon. Derby day against Briars isn't just a round on the fixture - it's one of the highlights of the Glebe calendar, and this season's clash delivered everything we love about it.

Across four grades, Glebe teams took to the field with the same thing in mind: heart, hustle, and a performance worthy of the maroon and white. **The results were a mixed bag but PL2 brought home the trophy!**



Women's **ML3** took to the field first in a gritty, goalless draw that felt anything but a disappointment. Glebe's ML3 women came out of the blocks firing, earning a penalty corner in the dying minutes of the first quarter - but Briars' defense held firm, their tackling sharp and relentless from the first whistle.

The second quarter belonged to Charlie, whose electric run down the sideline cut open the Briars backline and gave ML3 the foothold they needed in the attacking circle. The team kept the tempo high, working hard to wear down their opponents and crowd the keeper, while Tilda held her usual steady ground in defence.

## BRIARS DERBY DAY

Hope arrived in the third quarter - and with it, some of the best hockey of the afternoon. ML3 connected beautifully through the midfield, moving the ball with fast, efficient transfers around the back and creating real chances in the attacking circle. The net just wouldn't give. From there it was end-to-end, both sides refusing to blink. ML3 matched Briars blow for blow, maintaining intensity right through to the final whistle.

0-0 on the scoreboard, but a performance full of promise. The work rate, the structure, the fight - it was all there.



Players Player: Amy (In the distance), Lynsey, Emily (R)



Terry - Acting manager with jazz hands

**Second game - men's PL1.** A game that never quite found its rhythm - but one with plenty of individual moments to build on.

Both sides came out tentative, and it showed. Overheads dominated the early exchanges as the match settled into a cautious passing game, lacking the urgency either team needed to take control. Glebe earned an early penalty corner but couldn't convert, and Briars responded in kind - their own PC coming and going without reward.

Glebe was asking the questions in the circle in the first quarter with Dylan fired up contesting the umpire and testing the Briars keeper. Orlando with many cracking shots that deserved more - but the goalie was simply too good on the day.

## BRIARS DERBY DAY

Glebe came out with renewed energy in the second quarter, earning another PC in the opening minutes and showing glimpses of what they're capable of. Orlando continued to fire in the third, converting a quality penalty corner and keeping the pressure on with some threatening chances around goal.

Tim was his reliable self throughout - seemingly everywhere at once, covering ground from midfield to defense and keeping Glebe in the contest when it mattered.

The frustration was writ large, passing and positioning, was a little lack luster despite the effort and continued pressure. In the end, a 1-2 result that reflected a day where connection was hard to find and Briars' goalie reigned supreme.



Adam Campano - coach



Players Player: Corey (M), Dylan (L), Henry (R)



Ken Wark - ML2 coach

**Women's ML2 followed.** What a way to finish - ML2 held their nerve in the dying seconds to earn a hard-fought 2-2 draw.

Mikaela got the team off to the perfect start, converting a penalty corner to send the team into the first break 1 - 0 up. The squad came out on all cylinders and carried that momentum into the second quarter, with Lou putting on a masterclass - asking all the right questions in the circle and making life very uncomfortable for the Briars' defence.



## BRIARS DERBY DAY



*Phoebe coming out the gate on fire*

Briars found their feet in the third, drawing level and then pushing ahead. Ash was on her toes in goals, rising to the occasion as the pressure mounted and keeping ML2 in the contest. Mikaela threatened with a promising move forward but couldn't quite capitalise, and for a moment it looked like Briars might steal it.

But our ML2 legends dug in. Ending the third quarter stronger than they started, they pushed back hard - and when Briars had them under pressure in the dying seconds, the defence stood firm and held them off.

A 2–2 result that felt like so much more than a draw.

Special mention to Lou, who played double duty across both ML3 and ML2 on the day - an outstanding effort and exactly the kind of commitment that makes this club what it is.



*Players Player: Ash (R), Mikaela (L), Christine (M)*

Our young legends took the field for a **Minkey** game. Our Mack was on hand to keep the Glebe Minkeys focussed. These rising stars play for the love of it.





## BRIARS DERBY DAY

Men's PL2 finished off the day. Six goals. Zero conceded. And the Wark-Trevenar Trophy back where it belongs.

Jake set the tone within minutes, opening the scoring with a brilliant field goal that put Briars on notice from the very first quarter. The message was clear - Glebe meant business today.

Sam, fronting up for both PL1 and PL2 on the day, showed exactly why with a beautiful 1-2 finish, with Mack on hand to provide the assist. That's how it's done. Brad was electric down the sideline, carving through the Briars defence to add a third and keep the scoreboard moving.

What made this performance special was how connected the team was throughout. Declan was superb in the middle, feeding the strikers with precision and purpose.

Dan and Josh combined with superb skill to bring the ball into the circle, and Brad was clinical in finishing it off. Mack continued to pull the strings with another assist or two, and Josh laid his body on the line when it counted.



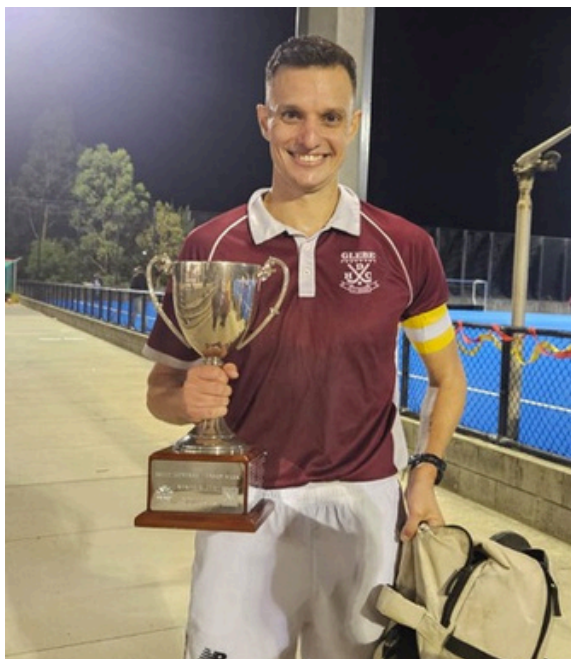
*Dan on a winner*



*Players Player: L-R: Brad, Josh, Dan*

Ian (player-coach) brought a cool head on the sideline all afternoon - masterful coaching that kept the team disciplined, hungry, and focused on a clean slate result. And clean it was. A dominant 6-0 victory, and with it, the Wark-Trevenar Trophy returns to Glebe. 🏆

## BRIARS DERBY DAY



*Jake with the Wark-Trevenar Trophy*

**Ever wanted to know the backstory of the derby day and the Wark-Trevenar trophy?**

In 2003 following a suggestion to reinstate the 'Derby Day' of former times, Briars and Glebe, two of Sydney's older Clubs, decided to organise a day and play for a trophy. After consultation with both Clubs the trophy was named after two Club stalwarts, Bruce Trevenar and the recently deceased Harry Wark Snr. Gill Burns (Briars) and Les Wark (Glebe) worked with Sydney Women's Hockey League and Sydney Hockey Association to allocate a date and time in the fixtures and the annual Briars-Glebe Derby Day was born. Traditionally 3 men's and 2 women's games are played and Minkey hockey features as part of the day.

### **Who's Bruce?**

Bruce Trevenar, Mr Hockey, joined Briars in about 1945. Always looking for ways to advance the Club, he was instrumental in organising for Briars to move into the District hockey competition by entering the Sydney Hockey Association as the Wests 4th Grade team.

### **Which Wark?**

Harry Wark Snr was a member of the GDHC from 1947 until his death in 2002. He played 756 games for the Club, was Club Captain from 1954 to 1957 and in 1961, was elected life member in 1964 and was its Patron for many years. He and his brother Ken played in the Club's First Grade team that dominated the Sydney First Grade competition of the late 1940's, 50's and early 60's.



*PL2 team*



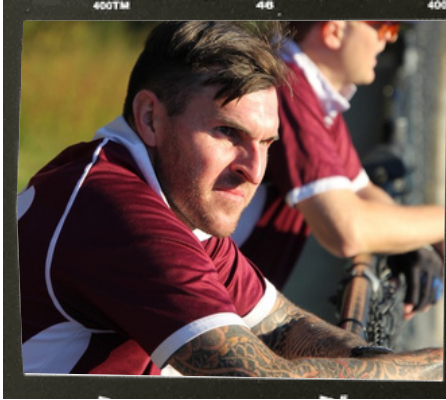
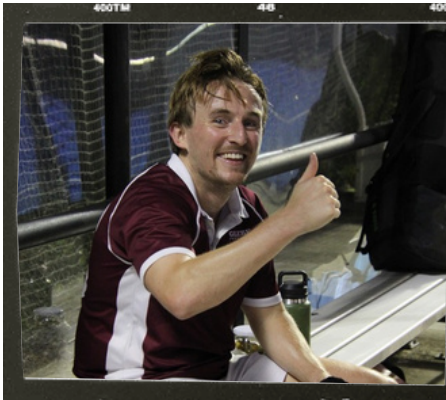
# NEWSLETTER



@glebehockey

www.glebehockey.com.au

## BRIARS DERBY DAY





# NEWSLETTER



@glebehockey

www.glebehockey.com.au

## BRIARS DERBY DAY





## JUNIOR HOLIDAY CAMP

Our Junior's Director, Nic and Development Director, Shorty sure did put on a show these recent school holiday! Proudly subsidised by the Arthur Stubbs Foundation - our school holiday development camp was a hit.

While the rest of Sydney was sleeping in and scrolling screens, The Crescent was very much alive.

Our junior school holiday training day brought together Glebe's next generation — from the littlest legs to the older heads — for a morning of fitness, skill work and the kind of fun that only happens when you put a bunch of hockey-mad kids together and let them go for it. The warm-up set the tone early.

“

We can't lead these days without senior players and life members stepping up and sharing their knowledge & experience.

-Katrina 'Shorty' Cochrane

”



*Junior School holiday session*



## JUNIOR HOLIDAY CAMP

Cones, ladders, sprints and drills - nobody was easing into this one. The energy was immediate, the competitiveness even more so. It turns out school holidays do nothing to dull the desire to beat your teammates in a race to the end line.

From there, the sticks came out and the real work began. Dribbling, passing, trapping, shooting - skills were tested, challenged and sharpened across every age group. The younger players watched the older ones with wide eyes. The older ones showed off - just a little 😊 and then remembered what it felt like to be shown up by a ten-year-old with quick feet and no fear.

Because that's the thing about a mixed-age training day. The youngest players learn what's possible. The oldest are reminded of why they fell in love with the game in the first place. And somewhere in the middle, something quietly brilliant happens - a club culture gets passed down, one training drill at a time.

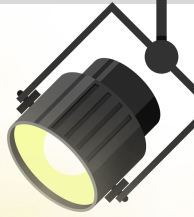
The coaches who gave up their school holidays to be on the turf deserve a massive thank you. So do the parents who dropped off a very enthusiastic child and trusted Glebe Hockey to send them home happily exhausted.

This is what the club is about. Building players, yes - but building people too. From Minkey to first grade, the journey starts right here, on this turf, at this club.



Thank you to everyone who helped on the day. We can't lead these session without the support of our amazing seniors, coaches and life members who continually step up to help run the sessions and to everyone behind the scenes.

*Special thanks to Mark, Henry, Erin, Hamil, Jale, Hannah, Pat, Rupert, our GWD players Jess, Miki, Siala and Zoe.*



## OPINION PIECE

# SHA REDRAW THE LINES FOR 2026

Harry Wark unpacks Sydney Hockey's PL3 to SL1 change

For many years, the Sydney Hockey Association (SHA) competition, the men's competition, has been divided into the Premier Division and the Sydney League competition. The Premier Division had 10 to 12 clubs fielding first, second, and third-grade teams, for a total of roughly 30 teams. The Sydney League (SL) competition comprised seven divisions, each with 10 teams, though the number fluctuated between 7 and 11. In recent years, the number of teams in the SHA competitions has been around 100. In contrast, in 1979, the SHA had 134 teams across its various competitions.

If a Premier Division club could not field a competitive third-grade team, it often allowed a Sydney League club to field its first-grade team instead and play in the third-grade Premier Division competition. Over the past 10 years, UTS-Raptors, St George and Macquarie University were clubs that fielded their first-grade team in the third grade of the Premier Division. Recently, all Premier Division clubs have been able to field third-grade teams, and the opportunity for clubs in the Sydney League competition to field teams in the Premier Division third-grade competition has ended.

Sydney League clubs competing in SL1 faced fourth-grade teams from Premier Division clubs. This often created an uneven competition structure, with many matches resulting in blowout scores and some being uncompetitive. Additionally, SL clubs struggled to keep their ambitious junior players and to attract talented players from elsewhere who wanted to play Premier Division hockey.

In the 2025 season, UTS-Raptors submitted a proposal to the SHA to re-enter the Premier Division from SL1, which was reluctantly approved. In an 11 team competition, UTS's first- and second-grade teams were consistently beaten in 2025, clearly showing they did not meet the Premier Division standard. The SHA faced a dilemma: a club, UTS, eager to stay in the Premier Division but not meeting the required standard, alongside several clubs such as St George and Easts, who dominated SL1 and aspired to compete at a higher level but were unable to do so under the current competition structure.



## OPINION PIECE

# SHA REDRAW THE LINES FOR 2026

Harry Wark unpacks Sydney Hockey's PL3 to SL1 change

There was no consensus on how to resolve the conflicting interests of certain clubs: those wanting to maintain the status quo and those seeking to compete at a higher level. SHA faced a difficult choice and devised a novel solution. Premier Division clubs were reduced to two teams, with UTS-Raptors being relegated from the Premier Division to the Sydney League competition. In 2026, the Premier Division comprises 10 clubs, each with a first and second-grade team, competing in an 18 game season. The 2025 third-grade teams from Premier Division clubs were moved to Sydney League One (SL1) for the 2026 season. The only exception is Briars, which decided not to enter a team in the 2026 SL1 competition.

This new structure enabled UTS-Raptors, St George, and Easts to participate in the 2026 SL1 competition, which is effectively the third-grade competition equivalent of the 2025 season structure. St George and Easts moved up a grade, as they desired, and UTS-Raptors were relegated two grades rather than three. The application of UTS to remain in the Premier Division was rejected.

The difficulty remains as to how clubs in the Sydney League competition can break into the Premier Division. There is no formal promotion-relegation system. Players from outside Sydney, interstate, and international players preferentially join Sydney Premier Division clubs that often pay money, offer scholarships, or have well-connected coaches who potentially ease their pathway into State teams. Even Sydney League competition club's own talented juniors leave to play for Premier Division clubs, aiming to further their hockey ambitions. For clubs like St George, UTS-Raptors and Easts, buying talented players, offering scholarships, and attracting influential coaches to build competitive Premier Division first and second-grade teams is beyond their financial means. This is a problem SHA is still grappling with, and there is no obvious solution.



## OPINION PIECE

# SHA REDRAW THE LINES FOR 2026

Harry Wark unpacks Sydney Hockey's PL3 to SL1 change

Team-based competitions, rather than club-based ones with strict promotion and relegation rules, are an option. However, the team-based option would destroy the club-based structure of Sydney hockey, which has existed since the 1920s. Before the 1920s, a single-team system was in place, but clubs often came and went, and players frequently moved between them. A club-based system allows players to transfer between different grades according to their circumstances and to become part of a larger organisation with social and organisational benefits. Overall, the club-based structure better supports junior development and promotes the game. Although not always, in 2026, Sydney University had 19 senior teams competing in various competitions, but did not have a single junior team.

“

The change provides a bridge for clubs to reach the Premier Division. They get to play a stronger opposition whilst still being competitive. It aims to foster players within their own clubs.

-Peter Busch, President SHA

”

The SHA competition structure undergoes annual review, with further changes beyond the 2026 format likely. The dominance of four or five clubs, who pay players, offer scholarships, or use well-connected coaches to attract talented recruits from outside Sydney, other states, and overseas - while including few locally developed juniors in their first-grade team, has divided the Premier Division into two clear groups: competitive and non-competitive clubs. At present, clubs that nurture local juniors into their first-grade teams receive no rewards for their development efforts.

The status quo is hard to change, but a competition structure that encourages clubs to develop their players from Minkey to first grade and places restraints on club's methods of attracting external talented players through various inducements would create fairer, more balanced, and broader-based hockey competitions in Sydney.

*Harry Wark*  
GDHC Life Member

Comments on my observations, whether positive or negative, are welcome.



## FROM THE ARCHIVES 2006 – A Season to Remember for Glebe

Look back 20 years into our archive, what a year to be a Glebe hockey player. The 2006 season will go down as one of the club's finest - on the field, off the field, and everything in between. The men's first grade etched their names into club history, claiming back-to-back premierships for the first time since 1976/77, finishing the season a staggering eight points clear of second place with 75 goals scored and just 17 conceded. The sixth grade added another premiership flag of their own, the Veterans produced a grand final thriller, and Glebe swept both the Premier League and First Division Club Championships.

For the women, it was a year of honest reflection and genuine promise - a squad rebuilding with purpose and the foundations firmly in place for a big 2007.

“  
Winning back-to-back was exceptional - a feat not performed for many a year.  
-Danny O'Brien Senior  
Grades Captain  
”

### Glebe Men's First Grade: Minor and Major Premiers!

The benchmark of Sydney hockey in 2006 . Geoff Paterson's side lost just once all season, scored 120 goals across 19 games, and delivered a grand final performance that had the whole club on edge - deadlocked 3-all at fulltime, 4-all after extra time, before winning in sudden death penalty flicks. Michael Wark was the standout, finishing as Sydney's highest goal scorer with 37 for the season and taking home the **Ron Riley Award** with 33 Premier League goals. It was a year of team effort from the strikers scoring 92 goals between them and a back line slowing the opposition attacks and limiting outlet passes. Training was consistent through out the year with the team committed to excellence making a difference.



Back Row (l-r) Geoff Paterson (Coach) Ian Paterson, Patrick Wark, James Benson, Michael Wark, Matthew Wark, Alistair Cullen, Andrew Cheong, John Nilan (Manager)  
Front Row (l-r) Stephan Madycki , Aaron Oman, Adam Howard, Zac Farlow, Brendon Booth, Mark Paterson, Darryn Booth, Dean Benfield.





## FROM THE ARCHIVES

### 2006 – A Season to Remember for Glebe

**Men’s 2<sup>nd</sup> grade - finished third.** A young side full of potential that hit its straps at the right time - blowing Briars away 6-1 in the semi-finals before ultimately falling to Moorebank in the decider. New coach Rob McDonald brought a winning attitude and the team showed real promise in the second half of the season after a messy first half. Inexperience and inconsistency impacted the team but the only way is up. With youth on their side, this group is knocking on the door.

— “ —

Even though we were winning, it wasn't pretty.

-Rob McDonald  
2nd Grade Coach

— ” —

— “ —

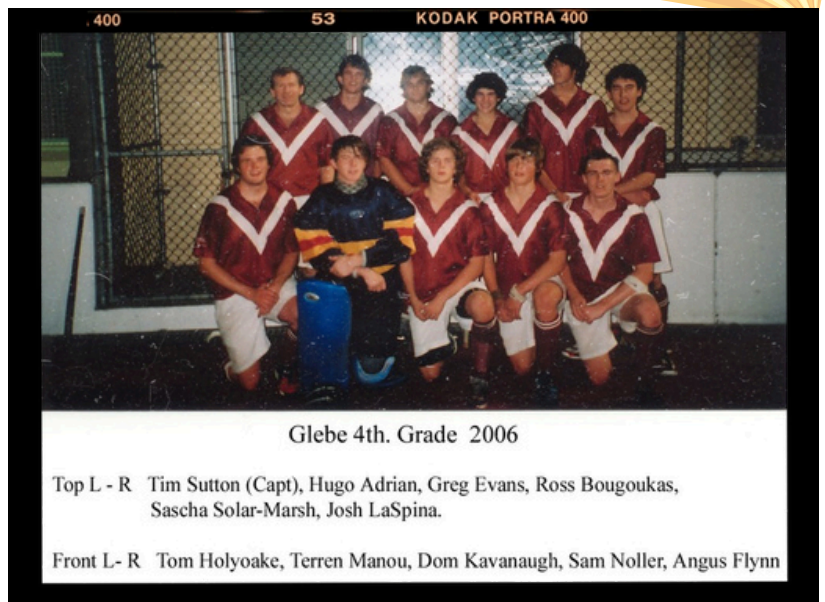
The best team in the comp came third.

-Colin Rochester  
3rd Grade Coach

**Men’s 3rd Grade - finished first (Minor Premiers)** Third grade dominated the rounds - winning the minor premiership by seven points with the best goal difference in the competition. What went wrong in the finals remains one of those hockey mysteries: injuries in the major semi, a late goal in the preliminary, and a season that deserved better than it got. A brilliant group who gave everything in the maroon and white. The lesson from the season was that the competition starts again in semi-finals no matter what the score was during the season.

— ” —

**4th Grade - finished fourth.** A season defined by its moving parts - 30 players used, a young squad juggling school, rep duties and double-ups. The year was marred by winning or losing, with only two draws the whole season. The hockey was often excellent, the results inconsistent. Coach Tim Sutton saw genuine talent emerging, and expects big things in 2007.





## FROM THE ARCHIVES 2006 – A Season to Remember for Glebe

**5th Grade finished eighth.** A tough year that tested everyone's commitment. The side battled through injuries, no-shows, and fixture chaos - even forfeiting two matches. But those who turned up gave everything, and the club thanks them for it. Special mention to George Manou for a superb season in goals.

**6th Grade - Premiers 🏆 Back-to-back!** The sixth grade claimed the minor premiership and then went all the way, making it two grand final wins in a row. With a tight defensive structure and brilliant team cohesion, they were deserving champions. Mic Bougoukas was outstanding in the grand final. Sam Bagley: most improved. The boys are already eyeing three in a row.

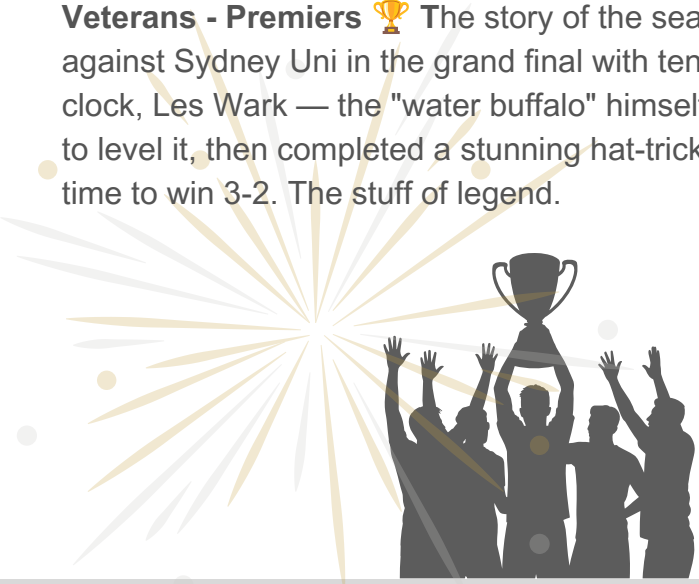


“  
**Every player that goes onto the field does so with the support of a dozen or more players and a few beers after the game.**  
— Graeme Moseley, 7th Grade  
”

**7th Grade finishing fourth.** Fourteen games, four wins, two draws - and a whole lot of fun. With an average age of 43 and a squad that plays without complaint and never trains together, 7th grade is the beating heart of the club's lower grades. Best stat of the season: first game lost 1-8, last game won 3-0. Character, not age, defines this side.

**Veterans - Premiers 🏆** The story of the season. Down 1-2 against Sydney Uni in the grand final with ten minutes on the clock, Les Wark — the "water buffalo" himself — scored twice to level it, then completed a stunning hat-trick in golden goal time to win 3-2. The stuff of legend.

“  
**Fitter and faster next year we may not be, but we will be there, playing for the dirty red and white.**  
-George Manou  
Vetrans Player  
”





## FROM THE ARCHIVES

### 2006 – A Season to Remember for Glebe

#### Women's Grades

The 2006 women's season was, by any measure, one of growth, honesty and heart. It wasn't always easy - the on-field results were mixed, commitment was an ongoing challenge, and depth across grades was stretched at times. But ask anyone who was part of this group and they'll tell you the same thing: the foundations laid in 2006 are exactly what this club needs to build something special in the seasons ahead.

Off the field, the women's section brought some of the year's best moments - the unforgettable Jungle Fever social night, trivia, the pub crawl and a wonderful presentation evening at Drummoyne RSL. The hockey will come.

The community is already there.

#### Women's 1st Grade Metro | Rebuilding Year

First grade didn't have the season anyone had hoped for - and those involved have been refreshingly candid about why. Coach Dean Benfield came into the role with high expectations, a sharp tactical eye, and a clear vision for how this team could play. What he encountered was a commitment challenge that made it difficult to deliver the standard of preparation the competition demands. Despite the difficulties, Dean introduced some genuinely exciting concepts - the sliding press, pocketing and turnover plays, and midfield rotations that gave the team a more sophisticated shape when they clicked.

At its best, this team showed real class. The talent is there - players like Catherine Wark, who won Best and Fairest, and several others who can and should play at this level. But first grade hockey in NSW is unforgiving, and as Dean put it plainly: if you want to play at this level, you train at this level. Every week.

The arrival of a new coaching setup, a new-look uniform and a renewed collective focus makes 2007 an exciting proposition. This group knows where it fell short, and knowing is more than half the battle.

“

**I believe we can do SO much better than we did in 2006. There is no way we reached our full potential as individuals or as a team."**

— Helen Howe, Women's Captain

”



## FROM THE ARCHIVES

### 2006 – A Season to Remember for Glebe

“

If you want to play first grade and second grade, you should be training. Every week, rain hail or shine. Hockey is a skill-based game and all players can get rusty.

-Helen Howe, Women's Captain

”

#### Women's 2nd Grade Metro | Strong Start, Season of Two Halves

If you want to understand what this second grade team is capable of, just look at the first five rounds of the season. Undefeated. Three draws, two wins. A side on fire, playing with belief and building something to be proud of.

The second half of the season told a different story - but not one without reason. The loss of Robyn, their inspirational goal-scoring machine, first to first grade and then to Canberra late in the year, disrupted the chemistry of a team that had found real momentum.

The juggling of players between first and second grade, an inevitable feature of any second grade side and cost the team its rhythm at crucial moments.

But here's what never wavered: the effort. Every time this team took the field, they gave 100 percent. Coach Peter Wark was clear-eyed in his assessment, the talent in this group is real, the potential is enormous, and the future is genuinely exciting. As Peter put it himself - **we have only just begun to fight**. Watch this space.

#### Women's 3rd Grade Metro | Finished Stronger Than They Started

Third grade's 2006 story is one of a team that grew into the season, and by the end of it, was playing some genuinely good hockey. It's just a shame the semi-finals came too soon.

Coach Andrea Lum was honest in her season review: the start was shaky, fitness was a limiting factor at times, and a year in which several players were deep in HSC study created real logistical challenges. Commitment and punctuality - getting the whole team on the field, warmed up, and ready was something this group needed to work on.

But the trajectory was unmistakably upward. As the season wore on, the team broadened its skills, built genuine trust between the grades and found a playing style that worked for them. By the time the season closed, this was a unit that had genuinely improved — individually and as a collective. Missing the semis stung, but the experience will only sharpen the hunger heading into 2007.



## FROM THE ARCHIVES

### 2006 – A Season to Remember for Glebe

#### Women's 4th Grade (ED2) | Consistent, Competitive and Full of Promise

It was, by all accounts, a fun year - and in a grade where the scorelines don't always tell the whole story, that matters a great deal. Fourth grade brought genuine consistency to their campaign, mixed results and all, and showed flashes of quality that left coach Melissa Newton genuinely excited about the future.

The highlight? Beating the team that finished first on the table. That's not something that happens by accident, it takes ability, cohesion and confidence, and this group had all three on their day. They weren't far off the semi-finals, and given the youth being developed through this side, they'll be pushing hard in 2007.

#### 5th Grade (ED3) | Spirit, Growth and Good Hockey

If the fifth grade's season could be summed up in a single word, it would be growth. Not just in skill, though that was clearly evident - but in confidence, in communication, in the trust that builds between a group of players who commit to each other week after week.

Coach Sue Brady, in her first season with Glebe, found a team full of character. Players moving freely between the two Eastern Districts sides, plenty of close games, and a group that slowly but surely found its voice on the field. The short passing game improved noticeably each week, less experienced players grew into the physical demands of the competition, and by the end of the year, this side was playing with a confidence that will carry directly into 2007.

— “

They gave their all every game. We even beat the team coming first — so it shows there is real potential in this side.

—Melissa Newton, 4<sup>th</sup> grade coach

— ”

“

The team has built up terrific spirit and commitment. Some of our less experienced players have become tougher and 'go for the ball' much to the surprise of opposing teams.

— Sue Brady, 5<sup>th</sup> grade coach

”



## FROM THE ARCHIVES

### 2006 – A Season to Remember for Glebe

#### Junior Season 2006

If you ever need proof that the future of Glebe hockey is in safe hands, look no further than the 2006 junior season. Nine teams, more than 110 registered players, and a depth of talent - from Minkey to Under 17 - that had the club buzzing all year long.

It wasn't all smooth sailing. Numbers were tight in some age groups, the U17A side had an impossibly tough act to follow after three consecutive premierships, and the U13s faced some heavy score lines that would have tested lesser spirits. But the word that keeps coming up, from every coach, every manager, every report - is determination. This junior group played with heart, competed hard and carried themselves with genuine club pride.

And when the season's highlights are counted, they are extraordinary. The U15A Redbacks went through the entire season undefeated, claiming the premiership in one of the great junior achievements in recent club history. Both U11 sides made their grand finals. National Championship titles were won by Glebe players representing NSW. The representative list alone would make any club envious.

#### U17A - Fourth place

**Three consecutive premierships.** That's the legacy the U17A side carried into 2006 and the weight of expectation that came with it. To their enormous credit, this group gave everything to defend the title, and what they encountered wasn't a failure of effort but a run of misfortune that tested the whole squad's resolve.

Prolonged injuries to key senior players meant the team was regularly drawing on U15 players to fill the ranks - a situation that would challenge any side at this level. They finished fourth, which in the context of what they were dealing with represents a genuine achievement. More importantly, the young players thrown into the deep end gained invaluable experience that will shape this group for years to come.

“

What we lacked in numbers was certainly made up for in determination and spirit.

-Mark Noller  
Junior Convenor

”



## FROM THE ARCHIVES

### 2006 – A Season to Remember for Glebe

#### Junior Season 2006

##### U17B - Season of collaboration

Short on numbers and long on spirit, the U17B side took an innovative path in 2006 — amalgamating with Sydney University and being co-coached by Tom Holyoake and Khevyn Williams. It was a logistical challenge from start to finish, but the players embraced the arrangement and made the most of their season. A big thank you to Tom and Khevyn for sorting the complexities of training and game-day organisation so that these boys had a competition to play in at all.

##### U15A Redbacks — PREMIERS - Undefeated Season

Stop. Read that again. Undefeated. The entire season. The U15A Redbacks delivered one of the most extraordinary performances in recent junior club history, going through 2006 without a single loss and capping the season with a Grand Final win over Moorebank - a tight, nervy 3-2 victory that was entirely befitting of a team that had fought hard every single week.

Coach George Manou deserves enormous recognition for building a side that not only won, but won the right way - collectively, consistently, and with a standard of hockey that drew widespread admiration. Manager Mick Bougoukas was right there with him every step of the way.

As if an undefeated premiership wasn't enough, three players from this side - Scott Cleary, **Ross Bougoukas** and **Aleks Manou** — were selected in the NSW U15 team that went on to win the National Championships. Three state champions from one junior premiership side. Remarkable.

“  
**Three players; Scott Cleary, Ross Bougoukas and Aleks Manou were selected in the NSW U15 side which won the recent National Championships.**

— Mark Noller, Junior Convenor

”



**Ross and Aleks now play PL1**



## FROM THE ARCHIVES 2006 – A Season to Remember for Glebe

### U15B Strikers — 8th Place

A building year for the Strikers, who competed in the Central Area competition and gave their best each week. Kylie Lawson guided the side with dedication throughout the season, and the experience gained by the players will only strengthen this group heading forward.

### U15B Hornets — 3rd Place

A terrific result for the Hornets, who finished third in the Central Area competition under coach Craig Bagley. This side showed consistent effort across the season and delivered a result the club can be proud of. The social highlight of their year — a team party at Jubilee Oval followed by a players versus parents match - was described as something approaching a free-for-all. Which, by all accounts, was exactly what it needed to be.

“ **The Hornets certainly enjoyed the social side of club sport — finishing the year with a team party at Jubilee and a players v parents game. More like a free-for-all, I think!**  
— Mark Noller, Junior Convenor ”

— “  
Despite some very big scores, the players never gave up.  
-Mark Noller  
Junior Convenor

### U13A Redbacks — 6th Place

The U13A Redbacks faced one of the tougher years in the age group, a shortage of U13 players meant the side leaned heavily on U11 players stepping up, while the competition itself proved unusually strong. Some of the score lines were heavy, and there were moments when lesser teams might have folded.

This team never did. Coach Terry Kelly and Manager Beth Robinson kept spirits high and kept the group believing, and the players, many of them younger than most of their opponents - competed with a determination that made everyone who watched them proud. They didn't fold when the scores got away from them, and that kind of character is something you can build a team on.

— ” —



## FROM THE ARCHIVES

### 2006 – A Season to Remember for Glebe

#### U13B Strikers — 5th Place

The U13B Strikers came agonisingly close to making the semi-finals — no small feat for a side that rarely fielded a full team with reserves. Coach Patrick Wark, with assistance from his father Harry, built a group that gained enormous experience across the season. The new players who came through this side in 2006 are better for every game they played. Fifth place, and a great deal of learning — that's a solid foundation.

“  
**The U13B team almost made it into the semi-finals, even though they rarely fielded a full team.**

— Mark Noller, Junior Convenor

”

#### U11A Redbacks — Grand Finalists (2nd)

The U11A Redbacks were the only team in their competition to push Sutherland all year — a remarkable statement given the standard Sutherland set in 2006. Under the guidance of Philip Sheard, this side developed their skills progressively across the season and produced a level of hockey that had the club watching with real excitement. Grand Finalists, and a team that will only grow stronger.

“

I am quite excited by the standard of our young players coming through. Both U11 teams made the Grand Finals, and five players represented Sydney.

-Mark Noller  
Junior Convenor

”

#### U11B Strikers — Grand Finalists (2nd)

This is the story of the junior season. The U11B Strikers went from no wins in 2005 to Grand Finalists in 2006. Read that again.

Under the coaching of Amy Wark, this group of young players transformed completely. They came into the Grand Final showing they could attack and defend, that they trusted each other, and that they belonged. How good is that? Very, very good.

The kids were keen and eager from round one, and by the time the Grand Final arrived, they carried themselves like a team that knew exactly what they were doing. Amy Wark's patience, skill and belief in this group produced one of the feel-good stories of the entire 2006 club season.





## FROM THE ARCHIVES

### 2006 – A Season to Remember for Glebe

#### Minkey — The Stars of the Future

Every Saturday morning at Jubilee Oval, the magic starts. Up to 50 children aged three to nine years old take to the field under the guidance of Vernon Howe and Tim Flahvin, learning the basics of hockey in the best possible environment — fun first, skills second, and always with a smile.

The Minkey program is the lifeblood of the junior pipeline. It's where lifelong Glebe players are made, where the first stick is picked up, and where the love of the game takes root. Vernon, Tim, Andrew Cheong, Alison Cheong and Hannah Oman are the reason Minkey at Glebe is as popular as it is — their energy, patience and genuine joy in working with young children is extraordinary.

“

**From Minkey to first grade. That's the Glebe journey.  
And it starts here, every Saturday morning, at  
Jubilee Oval.**

”



# NEWSLETTER



@glebehockey

www.glebehockey.com.au

## SPONSORS 2026



Supporting the club financially, this season is the perfect time to enjoy a game of bowls while enjoy the outdoors and have your team bonding get togethers or any celebration.



JDH offers Glebe Hockey a generous **40% discount** on the Genesis sticks and other gear. **Use code: GlebeHC2026-40%** at [www.jdhsports.com](http://www.jdhsports.com)

A long term partner of the Club, JDH has been incredibly generous over the years, and Glebe Hockey are thankful for Jamie's ongoing support.



GWD and GDHC get a **10% discount**. Stock on your fitness gear for the off season.

**Use code: GWD10-FPCREW** when you shop at <https://www.lskd.co>



Freshest produce in the inner west - hosting a summer get together? Head on down to Glebe Point Road to stock up on high quality produce.



The team offers Glebe Hockey members a 17% discount off an initial consultation and then 15% for every session after. Get back on field quick smart with the right treatment.



## OUR BOARD



Sue Heath – President  
[president@glebehockey.org.au](mailto:president@glebehockey.org.au)



Katrina Cochrane – Development Director  
[development.director@glebehockey.org.au](mailto:development.director@glebehockey.org.au)



Michelle Hancock – Women's Director  
[womens.director@glebehockey.org.au](mailto:womens.director@glebehockey.org.au)



Tim Nelson – Treasurer  
[finance.director@glebehockey.org.au](mailto:finance.director@glebehockey.org.au)



Sash Fomin – Men's Director  
[mens.director@glebehockey.org.au](mailto:mens.director@glebehockey.org.au)



Angela Micic – Communications Director  
[communications.director@glebehockey.org.au](mailto:communications.director@glebehockey.org.au)



Nic Glass – Junior's Director  
[juniors.director@glebehockey.org.au](mailto:juniors.director@glebehockey.org.au)



Ellen Kennedy – Secretary  
[club.secretary@glebehockey.org.au](mailto:club.secretary@glebehockey.org.au)

**Previous editions of the Newsletter are available  
on our website.**

We endeavour to ensure that information in this newsletter is accurate. If you notice any errors or omissions we will do our utmost to correct them. And if we have missed anything that you think should be included, please get in touch so we can consider for future editions.



**Glebe  
District  
Hockey  
Club Inc.**

**Family | Equality | Commitment | Contribution**